

APPENDIX 7-B

Economic data

Contents

1: Sectoral economic shifts, 1968, 1978, 2022	2
2: Employment by sector in Namakwa and Northern Cape	3
3: Backward economic linkages of the Boegoebaai Port	5
4: Tourism subsectors in Namaqualand	6
4.1 Agri-tourism	6
4.2 Biodiversity	6
4.3 c) Indigenous history of Namaqualand	7
4.4 Christian missions	7
4.5 Copper mining	8
4.6 Diamond mining	8
4.7 Geology	9
4.8 Fishing, marine life and shipwrecks	9
5: Potential tourism routes in Namaqualand	10
6: Agriculture	12
7: Coloured Reserve Areas (TRANCRAA communal land) in Namaqualand	12

Tables

Percentage of economic sectors in the economy of Namakwa DM	2
Employment by sector, Namakwa (1980-2023) and Northern Cape (2023)	3
People with work experience in sectors related to the Port and GH projects:	3
Likely backward linkages due to the development of the Port	5
Economic impacts during the Construction Period of the Port	5
Economic impacts of the Port during the operational phase	6
Key copper mining sites	8
Number of farming units and area covered per district	12

1: Sectoral economic shifts, 1968, 1978, 2022¹

Percentage of economic sectors in the economy of Namakwa DM

Sector	1968	1978	Current (2022) ²	Northern Cape 2022	Namakwa 1968-2022
Mining ³	82 %	86 %	40 %	22 %	Dramatic decline as percentage, but greater than Provincial average
Agriculture	4	3	12	8	Dramatic increase as percentage, higher than Provincial average
Trade, Catering and accommodation (incl tourism)	4	3	10	11	Significant increase as percentage, almost equal to provincial average
General government / community services	3	3	18	28	Dramatic increase as percentage, still lower than provincial average
Construction	2	1	2	2	Static as share of provincial economy; equivalent to provincial average
Finance	2	1	10	14	Dramatic increase as percentage, still lower than provincial average
Manufacturing	1	0	2	4	Significant increase as percentage, still lower than provincial average
Transport and communications	1	1	6	8	Dramatic increase as percentage, still lower than provincial average
Electricity	?	?	2	3	Cannot be determined longitudinally
General	3	3	0	0	
TOTAL	100	100	100	100	

¹ Dunne (1986), J, *Regional Development Strategy for Namaqualand*, p. 119.

² South Africa Regional Explorer, in Northern Cape Profile, 2024, p. 17.

³ Currently, there is a likely and significant expansion of mining in the Khai Ma Local Municipality, in terms of the Vedanta Zinc Mine and the Special Economic Zone. However, these impacts have not percolated into the statistical profile.

2: Employment by sector in Namakwa and Northern Cape

Employment by sector, Namakwa (1980-2023) and Northern Cape (2023) ⁴

Purple indicates decline, Green indicates growth

Industry	Namakwa Percentage 1980	Namakwa Percentage 2023	Northern Cape Percentage 2023	Comments
Mining	45 %	13	10	Drastic decline as district share; still larger than provincial average
Government Services	15	28	26	Almost doubling as district share, on par with provincial average
Construction	12	7	8	Decline as district share, on par with provincial average
Agriculture	9	13	18	Significant increase as district share, less than provincial average
Trade, catering and accommodation	8	17	12	Doubling as provincial share, greater than provincial average
Unclassified	5	0	0	
Transport and communication	3	3	4	Static, same level as provincial average
Manufacturing	1	4	4	Significant increase as district share, on par with provincial average
Electricity	1	0.6	0,4	Declining district share, on par with provincial average
Finance and Real Estate	1	8	10	Massive increase as district share, less than provincial average
Households	0	7	7	On par with provincial average
TOTAL	100%			

People with work experience in sectors related to the Port and GH projects:

MSP reports: The data below shows figures from 2018 (number of jobs per sector, and percentage share), as well as the average employment growth in the three years 2016-2019): ⁵

In Richtersveld LM, the largest employment sectors are:

- Community, social and personal services: 948 people (21%), which increased by 40 people between 2016 and 2019
- General government: 824 people (18%)
- Trade, catering, accommodation: 819 people (18%), but this sector showed the strongest growth (72 people)
- Mining and quarrying: 464 people (10%), which declined by 64 people between 2016 and 2019

⁴ Dunne, J, *Regional Development Strategy for Namaqualand*, (1986), p. 99 and Northern Cape Profile, 2024, p. 25.

⁵ *Municipal Socio-economic Profiles (MESP)*, reports compiled by National Treasury and GTAC. See https://lg.treasury.gov.za/ibi_apps/portal/Municipal_Socio_Economic_Profiles. Calculations based on Quantec and Urban-econ calculations, 2020.

- Agriculture: 385 people (9%), slightly declining
- Construction: 294 people (6.5%)
- Small numbers of people work in the Electricity, Water, and Transport sectors.

The Construction/Utilities/Transport group of employed people will likely number about 300-400.

In **Nama Khoi LM**, the largest employment sectors in 2018 were, listed by size and trend:

- Trade, catering and accommodation: 3746 people (24% of the workforce), increasing trend
- General Government: 2713 people (17% of the workforce), increasing trend
- Mining and quarrying: 2553 people (16%), but it declined by 89 people between 2016 and 2019)
- Community, social and personal services: 1824 people (12%), increasing trend
- Finance and business services: 1 496 people (10%), increasing
- Agriculture and fishing: 1082 people (7%), declining trend
- Small numbers of people employed in Construction (913 people, declining trend), manufacturing (711 people, increasing trend), Transport (651 people, increasing trend), and Electricity and Water (115 people).

This means that about 2 500 people in Nama Khoi LM have had exposure to the kinds of sectors required for the Port and GH Complex.

In **Khai-Ma LM**, the profile is very different, with intensive agriculture being the most prominent.

- Agriculture: 2248 people (48%), by far the largest, but showing a declining trend
- Government: 583 people (13%), growing trend
- Trade, catering and accommodation: 443 people (12%), growing trend
- Mining and quarrying: 237 people (5%), declining
- Construction: 133 people (0,1%), declining
- Transport: 73 people
- Small numbers of people in the other sectors.

Only about 200 people would have had exposure to likely sectors in the Port and GH complex.

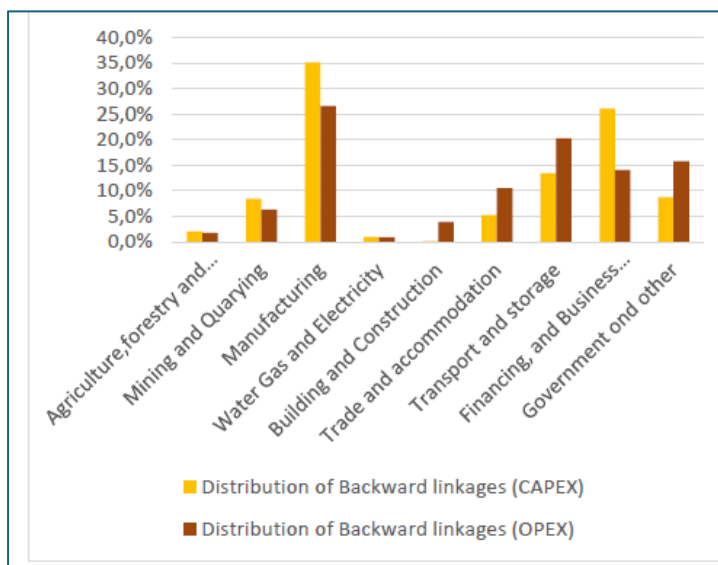
In **Kamiesberg LM**, in 2018:

- The largest employment sector was agriculture: 591 people (24%, and declining)
- Government: 492 people (20%, and declining)
- Trade, catering and accommodation: 380 people (15%), and growing
- Construction: 244 people (10%).
- Transport: 45 people (2%)
- Small numbers in other sectors.

Like Khai-Ma, only about 300 people would have had exposure to construction, transport and artisan-type trades.

3: Backward economic linkages of the Boegoebaai Port⁶

Likely backward linkages due to the development of the Port



The Transnet study highlighted the direct, indirect and total impacts of the Port, as follows:

Economic impacts during the Construction Period of the Port

Impact Variable	Boegoebaai Port - CAPEX (2024) Impact			
	Direct	Indirect	Induced	Total
New business development (Rm)	12 592.6	3 429.3	11 833.7	27 855.6
Gross geographic product (Rm)	3 220.7	1 324.7	4 628.4	9 173.8
Employment	7 190	4 400	16 200	27 790
Total worker income (Rm)	1 723.4	706.2	1 974.9	4 404.5
Taxes(Rm)	731.9	240.7	750.1	1 722.7
Multiplying effect				
New business development (R'm)	1.0000	0.2723	0.9397	2.2121
Gross geographic product (R'm)	0.2558	0.1052	0.3675	0.7285
Employment	0.5710	0.3494	1.2865	2.2068
Total worker income (R'm)	0.1369	0.0561	0.1568	0.3498
Taxes (Rm)	0.0581	0.0191	0.0596	0.1368

Source: SRR Socio-economic Impact Model, 2024.

⁶ Transnet 2024, Boegoebaai Port Development SEB Report, p. 19.

Economic impacts of the Port during the operational phase

Impact Variable	Boegoebaai Port Opex Impact			
	Direct	Indirect	Induced	Total
New business development (R'm)	2 000.0	459.6	1 734.6	4 194.2
Gross geographic product (R'm)	735.7	177.0	684.4	1 597.2
Employment	420	586	2 350	3 356
Total worker income (R'm)	152.0	94.0	295.4	541.4
Taxes	97.4	33.0	113.9	244.2
Multiplying effect per R1,000,000				
New business development	1.0000	0.2298	0.8673	2.0971
GGP	0.3679	0.0885	0.3422	0.7986
Employment	0.2102	0.2928	1.1748	1.6779
Tot. worker Income	0.0760	0.0470	0.1477	0.2707
Taxes	0.0487	0.0718	0.0657	0.0582

4: Tourism subsectors in Namaqualand

4.1 Agri-tourism

Some farmers are turning to agri-tourism and eco-tourism options for another income stream. One of the most iconic “tourism” linked farms is Sarrisam in the Groenriver area. Other tourism attractions on farms include the Donkey railway track, Schaap River Canyon near Bulletrap, the Spoegrivier Caves, the Namakwa 4x4 route, Klein Pella, rock pilings at Helskloof near Kotzeshoop, Kinderlê monument near Steinkopf, ship wreck route, and Noup (known for its diamond diver huts and waves for the surfer community). Spending a day in the countryside with herders could be a marketable option.

Given the growth of tourism described in the previous chapter, the scope for further agri-tourism, on commercial and communal farmland, is immense.

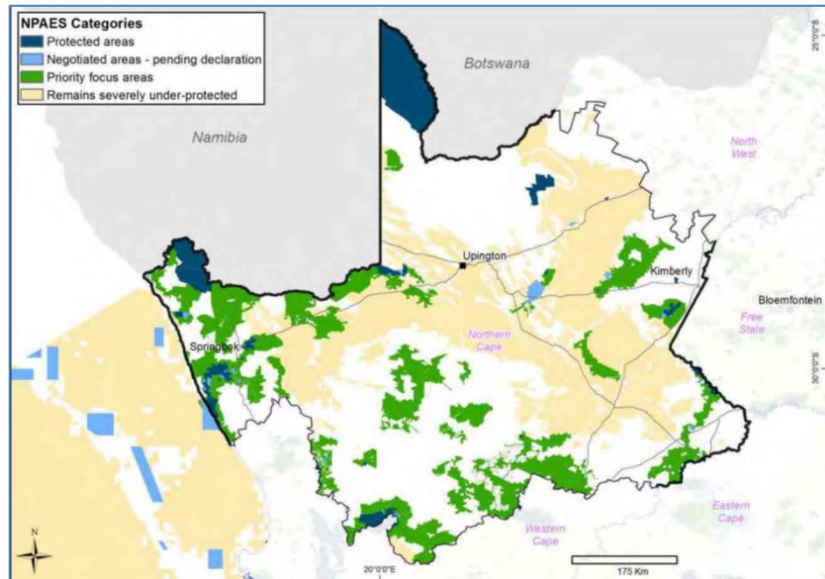
4.2 Biodiversity

The importance in terms of biodiversity and conservation value is underscored by the National Protected Area Expansion Strategy for South Africa (2016), which is based on the National Environmental Management: Protected Areas Act, 2003 (act no. 57 of 2003). This Act aims to create a representative network of protected areas on state land, private land and communal land, and to provide guiding principles for norms and standards to protect ecologically viable areas representative of South Africa's biological diversity and its natural landscapes. The Act also promotes nature-based tourism. With a new appreciation of the importance of biodiversity for tourism purposes, a momentous economic shift is taking place: “Taken as a whole, the demographic, socio-economic and land-use changes that signal the onset of the post-agrarian ecological revolution are becoming evident in the landscapes and ecosystems of Namaqualand as they begin to recover from two centuries of intensive colonial exploitation.”⁷

⁷ Hoffman, M.T. and Rohde, R.F. 2007. ‘From pastoralism to tourism: The historical impact of changing land use practices in Namaqualand’, p. 656.

The Northern Cape SDF points to the importance of preserving areas of natural beauty.⁸ “Protected areas” are “aesthetically prominent natural features ... to promote natural scenic beauty or biodiversity”.

Priority areas for protected area expansion in the Northern Cape.



Protected areas can include productive farms, but under certain prescribed conditions relating to sustainable stocking practices. For example, 26 farmers that are allowed to farm with a maximum of 950 Large Stock Units in the Richtersveld National Park. In addition, the Orange River Mouth Corridor Tourism Master Plan (2013) can guide tourism development in the area.

Typically, the biodiversity sector relies on public sector finance, but this sector has received substantial investment through various donors, such as the Global Environment Facility (GEF), the Critical Ecosystem Partnership Fund (CEPF), the Norwegian Agency for Development Cooperation (NORAD) and World-Wide Fund for Nature (WWF) and Wilderness Foundation. A concerted approach between farmers, government departments (Agriculture and Nature Conservation) and tourism bodies in the region can maximise tourism on these protected lands.

4.3 Indigenous history of Namaqualand

The archaeological richness of pre-colonial people, as well as stone age civilisations, in the entire Namakwa region can be utilised for local displays; (see Appendix B).⁹

The San were the original inhabitants, and lived as hunter-gatherers. Their cultural practices and knowledge, such as tracking, hunting and ethno-botany, are ideal for cultural displays.¹⁰ The Nama culture is also suitable for tourist information sites.

4.4 Christian missions

In Namaqualand, these include the German Mission at Kommas (Pella) and Steinkopf in 1812; Barnabas Shaw, a Wesleyan (Methodist) missionary who settled at Leliefontein in 1824; the Rhenish Missionary Society which established the Komaggas mission, and later at Kookfontein mission (now Steinkopf). After 1870, Concordia became a separate mission station and reserve. The mission stations became the core settlements of the coloured reserve land. Each mission

station has its own colourful history, which can be celebrated in tourist displays. In the Richtersveld Park, for example, Rev W Richter, a Dutch missionary at Kuboes, can be celebrated.

⁸ Northern Cape, 2022, *Spatial Development Framework*, p. 201.

⁹ Webley. L, 2007, Archaeological evidence for pastoralist land-use and settlement in Namaqualand.

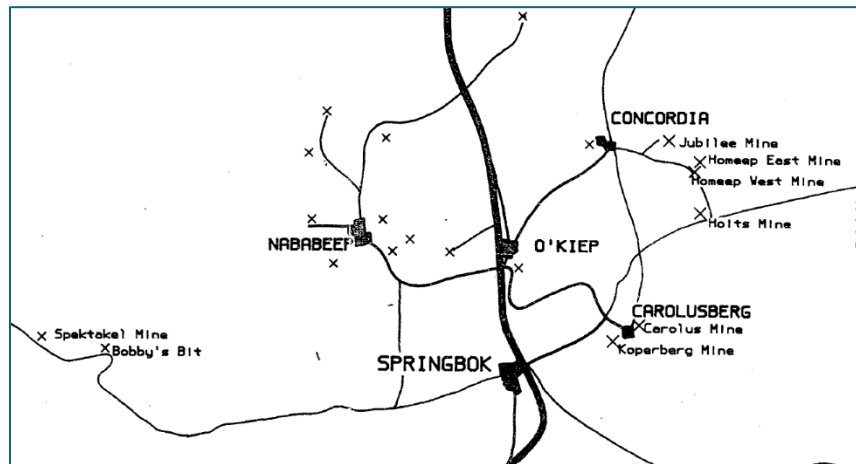
¹⁰ Tourism routes in this section were conceptualised by the Namakwa District Municipality: <https://www.namakwa-dm.gov.za/wp-content/uploads/2017/07/Experience-Namibia-Map.pdf>

4.5 Copper mining

The O'kiep copper district covers an area of 15 000 km², and includes Springbok, Nababeep, O'kiep and Carolusberg. A speculation boom took place in 1853 and 1854, with overblown expectations of copper ore and profitability. Only three companies survived by 1857. Ore was taken by mule to the Orange River, sent in barges to Alexander Bay, and shipped to England. By 1870, smelting was done at Springbok and O'kiep. In the 1860s, Government built its first road, from Springbok to Hondeklip Bay; but the Cape Copper Company got permission to build a rail line to Port Nolloth in 1876. For 68 years, the little railway was the main outlet to the sea. In 1886, mule traction was replaced by steam engines, but mules were retained for passenger traffic until 1896 (see Appendix B).

Okiep is the hub of this route, where there is already a beautiful museum.¹¹

Key copper mining sites¹²



4.6 Diamond mining

Diamonds were first discovered in Namaqualand in 1926 by Captain Jack Carstens, the son of a Port Nolloth shopkeeper. He found them in a coastal tract of land stretching from the Orange River to the southern boundary of Port Nolloth. Soon prospectors, option buyers and diamond buyers flocked to the coast, creating a “diamond rush”, with claims pegged mainly around Alexander Bay. This area became the world’s richest diamond area, yielding 2762 diamonds on only one month.¹³ Fearing another chaotic event like the Lichtenburg diamond rush, the Government prohibited all diamond mining on the Namaqualand coast in 1927. At that point, Ernest Oppenheimer bought the entire output of the Namaqualand fields, and placed the stones on the world market in an orderly manner. The Government then proclaimed the coast a State diggings, except for six discoverers’ rights on distinct geological deposits. Merensky and Oppenheimer bought up the other discoverers’ rights, and became sole controllers of Alexander Bay, being obliged to sell their stones to the Government.

The “Namaqualand Rebellion” took place in December 1928, because of the prohibitions on private diggings and illicit diamond dealers. The State responded by increased policing, employment on roadworks and railways, and the establishment of a poverty relief fund. The Kleinzee Museum offers the history of diamond mining. A mine tour shows the workings of a modern alluvial diamond mine.¹⁴

¹¹ <https://onsknk.co.za/Businesses/SeeDo/okiep-museum/3370>

¹² Dunne, J, 1986, *Regional Development Strategy for Namaqualand*, p. 141.

¹³ Dunne, J, 1986, *Regional Development Strategy for Namaqualand*, p. 50.

¹⁴ Namakwa Info. 2025. Northern Cape. Kleinzee. <https://www.namakwa-info.co.za/region/town/523/kleinzee> ; <https://www.namakwa-info.co.za/region/town/523/kleinzee>

4.7 Geology

Namaqualand started forming some 2,600 million years ago with volcanic eruptions.¹⁵ The area contains some of the world's most unique geological formations, long pre-dating the Gondwana split, and holds great mineral wealth. The heart of Namaqualand comprises an almost circular intrusion of igneous (volcanic) rocks, with the centre comprising the high granite massifs of the Kamiesberg themselves, surrounded by a landscape of rolling dome-shaped hills. These unique geological features offer breathtaking views. The region's rugged terrain is ideal for thrilling 4x4 routes. Along the coast is a sandy plain known as the Sandveld, with active dune fields,

The Richtersveld, a mountain desert with arid plains, has been described as “one of the most interesting and visually stunning geological areas of Southern Africa”, with coastal plains and mountain ranges (Ploegberg, Stinkfonteinberge, Vandersterrberg). The far north-east corner of Namaqualand is marked by the very hot and arid Gariep River valley, flanked by very broken mountainous terrain. This remarkable geological diversity underpins the mining history of copper and diamonds. In fact, the whole area amounts to an “open-air museum”. A large geological literature is available to use for tourism displays.

4.8 Fishing, marine life and shipwrecks

The west coast of Namaqualand hosts four Marine Protected Areas (MPAs), as gazetted in 2019. They are the Orange Shelf Edge (off-shore from Port Nolloth, an example of a healthy sea bed); the Namaqua Fossil Forest (Off-shore from Kleinsee, a fossilised forest of yellowwood trees, dating from 1 million years ago); the Namaqua National Marine Park, which includes giant kelp forests and deep mussel beds; and “Child’s Bank” (pristine corals, supporting very diverse sea life).¹⁶ Displays at coastal towns can educate visitors (and local communities) about the marine treasures that lie close off-shore. The MPA also supports the recovery of West Coast lobster from over-fishing in the past, and helps to protect a distinctive West Coast cuisine. Interventions should include education programmes, skills development, and infrastructure development, to support tourism.¹⁷

The shipwreck trail connects three major shipwrecks, namely, the Piratiny, the Border and the Arosa. The tours include travelling along the coast and visiting the beaches, archaeological sites, and landmarks. These are managed by a private company.

¹⁵ Cornell, DH et al, 2006, The Namaqua-Natal Province; Cornell, FC, 1920. The glamour of prospecting.

¹⁶ <https://www.marineprotectedareas.org.za/namaqua-national-park-mpa>

¹⁷ Namakwa DM, *Spatial Development Framework*, 2023.

5: Potential tourism routes in Namaqualand



5. The Clara Steam Locomotive Route

Clara is the name given to the steam locomotive which transported the copper ore from the inland copper mining towns to the harbour at Port Nolloth from where it was shipped to foreign markets. Tourists can go on a 4x4 or hiking trail along Clara's former railway line that starts in Nababeep at the mine museum, where Clara is parked, and ends at Okiep where the locomotive was parked for many years after her last journey.

Town	Tourist Attractions
Okiep	This historic copper mining town is the oldest mining town in the Southern Hemisphere. The current Anglican Rectory was the location of the original Okiep railway station.
Stuierkraal	A Cornish structure along the N7 between Okiep and Steinkopf where Clara, the steam locomotive, used to stop for water.
Steinkopf	Here tourists can visit the site of the old hotel that housed Clara's passengers.
Port Nolloth	This is where Clara's journey ended and from where her cargo was shipped off to foreign markets.



4. The Pilgrimage Route

On this route tourists can visit several churches and missionary stations in the Namakwa area that were established by the Rhenish Mission Society, the London Mission Society, the Church of England, the Roman Catholic Church, the Methodist Church, the Jewish Society and many other church organisations. These church organisations established both churches and schools in the area and contributed greatly to education and religion in the area. The pastors in charge of these churches also assisted in the negotiations for land and other rights for the local communities.

We trust that you will be inspired by the relics and remains of the past decades which strived to preserve and develop religion in our communities.

Town	Historical Background	Tourist Attractions
Springbok	Springbok is rich in religious, historical and cultural heritage with English, Dutch Reformed and Jewish influences that are visible in the architecture of the town.	<ul style="list-style-type: none"> » Synagogue (Namakwaland Museum) » Dutch Reformed Church/Die Klipkerk » All Saints Anglican Church » Saint Peter and Paul Roman Catholic Church in Maatjieskloof » Saint Ann's School for Girls under the management of the mission's nuns
Concordia	Founded in 1852 by Reverend Brecher from the Rhenish Missionary Society.	» Rhenish Missionary Church with its Cornish architectural building style
Kuboes	The town of Kuboes was founded in 1844 by Reverend Johan Hein of the Rhenish Missionary Society.	» The Johan Frederick Hein United Reformed Church
Pella	A mission station was opened here in 1878. The Roman Catholic Church took over an already existing mission station from the London Missionary Society after it was closed down. It was reopened by the Roman Catholic Church.	<ul style="list-style-type: none"> » Roman Catholic Cathedral » Museum » Mission/Convent School
Kamieskroon	Roman Catholic Mission Station	» Kamieskroon Roman Catholic Church and Mission
Leliefontein	Methodist Mission Station	» Leliefontein Methodist Church (a national monument)
Nourivier	Methodist Mission Station	» Nourivier Methodist Church and Primary School
Soebatsfontein	United Reformed Community	» United Reformed Church and Primary School
Steinkopf	The town was founded as a Rhenish Mission Station for the Nama people in the area.	» Dutch Reformed Church
Calvinia	The historic town of Calvinia was influenced by various religions. There's the story of the demolishing of the Anglican Church in the Apartheid era, the Dutch Reformed Church and even the Star of David.	<ul style="list-style-type: none"> » The Anglican Church » The Dutch Reformed Church » The Synagogue that later became the Calvinia Museum

1. The Historic Copper Mine Route



This is a self-drive tour through the region's historic copper mining towns. The copper mining history dates back to 1685 when Simon van der Stel's search for gold led him to discover copper at Carolusberg. Commercial copper mining commenced in 1852 and drew to a close in 2004. The Okiep Copper Company (OCC), or "Jan Komponie" as the locals referred to it, was once a well-known industry leader in the copper mining sector. This route will take you on a journey through Carolusberg, Springbok, Concordia, Okiep, Alexander Bay, Hondeklip Bay and Nababeep.

We trust that your copper mining town experience will be one to remember.

Town	Historical Background	Tourist Attractions
Alexander Bay	Copper ore was conveyed in bags from Kodas in the Richtersveld down the Orange River to the shores of Alexander Bay for shipping purposes by Sir James Alexander in 1836.	» Alexander Bay Museum
Hondeklip Bay	After copper deposits were discovered by Governor Simon van der Stel's expedition party, a search began for a suitable harbour from where copper could be exported. In 1846 a small harbour was built at Hondeklip Bay. Copper was transported by ox wagons from the inland copper mines to Hondeklip Bay via Messelpad Pass between 1850 to 1852.	» Messelpad Pass » Hondeklip Bay Harbour
Carolusberg	In 1865 a mine shaft was sunk at Carolusberg, by order of Governor Simon van der Stel, in search of gold, but instead copper was discovered. Carolusberg was also recorded as one of the richest copper mining plants in the operating era of the Okiep Copper Company (OCC).	» Simon van der Stel Mine » Diep Oor Mine » Copper Rock Tourism @ 078 518 5495
Springbok	Springbok is the South-African town where the first commercial mining operations originated. Springbok's copper mining history dates back to 1852.	» The Blue Mine » Smelting Furnace » Old Cemetery » All Saints Anglican Church » Namakwaland Museum @ 027 718 8100
Concordia	Concordia's copper mining history also dates back to the 1800's. Ore was transported since 1876 from the Okiep station (today the Anglican Church, Saint Augustans Rectory) to Port Nolloth with "Clara", the old steam locomotive.	» Tweefontein Mine » Granite Ore Bins » Comish architecture
Okiep	Copper was discovered here in 1855, which makes Okiep the second oldest mining town in South-Africa after Springbok.	» Comish Pumphouse » The View Point at the Okiep Big Hole » Smoke Stack » Ship Engine (electricity generator for mining operations in Okiep) » Photo collection at the Okiep Country Hotel @ 027 744 1000
Nababeep	Nababeep is historically the last copper mining town of the OCC which closed down in 2004.	» Nababeep Mine Museum » Morning Glory Viewpoint

3. The Nama Culture Route



Culture enthusiasts can experience the Nama culture by eating dinner cooked in a traditional fashion on an open fire in an iron pot, sleep in a Nama hut and listen to the stories told by Nama elders. Tourists can also sit around the fire at night and experience Nama dancing and singing.

Town	Historical Background	Tourist Attractions
Steinkopf	This is where a Rhenish Mission Station was opened for the Nama people in the area.	» Kinderlê » Kookfontein Rondawels (Experience Nama cuisine and dancing)
Eksteenfontein	Here the Nama culture can be traced back to its nomadic status.	» Museum » Nama cuisine » Nama story-telling, dancing and singing
Kuboes	The Nama capital of the Richtersveld.	» Nama being taught at the primary school » Nama cuisine » Nama huts » Nama dance groups
Pella	The Nama people's tracks can also be followed to Pella.	» Museum

2. The Historic Diamond Mine Route



Tourists can explore the Diamond Mine Route of the Namakwa region that stretches from Hondeklip Bay along the coast up to the Richtersveld along the mighty Orange River. Diamond mining industry leaders such as De Beers and Trans Hex have been practicing commercial mining for decades in this area. Small-scale diamond mining and deep-sea diamond diving are still the course of business in the area. The diamond mining history of the region has been captured in photos, and tourists are welcome to visit the exhibitions of the diamond mining history in the museums in Kleinsee and Alexander Bay.

Town	Historical Background	Tourist Attractions
Hondeklip Bay	Trans Hex conducted diamond mining operations in the area from 1974 to 2003.	» Site of the Trans Hex mine workers' hostel on the beachfront near the Arisia shipwreck
Kleinsee/ Koingnaas	Commercial diamond mining dates back to 1927 on the farm Kleyley Zee after Jack Carstens discovered diamonds on the farm the previous year. Alluvial diamonds were commercially mined by De Beers in Kleinsee and Koingnaas. The village of Kleinsee was established in 1942 and Koingnaas during the 1970s.	» Kleinsee Museum » Diamond Coast Hiking Trail » Boulder Heritage Route (historic walk through the village of Kleinsee)
Port Nolloth	Small-scale diamond recovery and deep-sea diamond diving.	» Port Nolloth Museum
Alexander Bay	Alexander Bay's diamond history dates back to 1925, and commercial diamond and deep-sea diamond diving are still in operation.	» Alexander Bay Museum » Alexkor Mine is a South-African government owned diamond mine
Sandrift	Diamond in the Sandrift area dates back to the 1970s.	» Active commercial diamond mining is practiced in Sandrift/Barken

6: Agriculture

Number of farming units and area covered per district

District	Farm units	Area (ha)	Average farm unit size	Most prevalent farming types
Richtersveld	60	1 560 808	26 013 ha	Large communal farming units
Nama Khoi	236	1 496 301	6340 ha	Combination of commercial and private farming units
Kamiesberg	222	1 170 624	5273 ha	Combination of commercial and private farming units
Khai-Ma	97	825 657	8 511 ha	Large private farming units in Bushmanland
Total	615	5 053 391		

7: Coloured Reserve Areas (TRANCRAA communal land) in Namaqualand

Under the tutelage of the mission stations, coloured residents could not be coerced to enter the service of farmers; there were no provisions for preventing subdivision and joint ownership; and taxation was not strictly enforced.

By the beginning of the 19th century, the Nama were largely a landless proletariat and mission stations became their only places of refuge. The Namaqualand communal areas were based on "tickets of occupation" granted to the mission stations and the resident populations trying to protect themselves against dispossession and exploitation. The state took administrative control of the areas through the Mission Stations and Communal Reserves Act 29 of 1909. Later known as "Coloured Rural Areas" (administered in terms of Act 9 of 1987), these "Reserves" are held in trust by the Minister of Agriculture and Land Affairs, but are managed by the local authorities. The 1909 Act imposed a head tax on adult males, which was aimed at decreasing pressure on the land and making labour available to the nearby white-owned farms. Local Boards were elected in the CRAs, which were now a form of civil administration, separate from the missionaries. The entire Act was deeply unpopular, and resulted in open defiance in some areas.

Substantial areas of land were expropriated from inhabitants and granted to the mining companies. The loss of the means of subsistence made inhabitants vulnerable to merchants who advanced commodities on credit, and “usurer capital”, who purchased grain on credit. Consequently, the inhabitants became increasingly indebted, and had to repay debts in the form of labour (e.g. at harvesting time) or sell produce at prices fixed by traders.¹⁸

The successive apartheid governments' attempts to reform communal lands, including the forced individualisation of communal lands in the economic unit's programme, have had significant and lasting impacts on the social and economic fabric of communities. These policies disrupted traditional land tenure systems and communal living arrangements, causing a loss of communal identity and social cohesion. The forced individualisation often resulted in land fragmentation, making it difficult for small-scale farmers to achieve economies of scale and sustain their livelihoods.

For the next fifty years, few changes were made, and the communal land tenure system remained largely unchanged. There were several factors which “induced an official inertia to the Namaqualand region as a whole”.¹⁹

- As the mines and their labour requirements declined, so the Reserves became insignificant;
- With few employment opportunities, the Reserve population was reduced to a general level of impoverishment accompanied by a lower level of internal protest
- The Okiep Copper Company was content with the communal system as the cost of maintaining its labour force was reduced; it did not have to provide housing and infrastructure for workers recruited from the reserves
- The Government was unclear about the status and future dispensation of coloured people.

In 1944, the Reserves were removed from the control of the Department of Native Affairs and transferred to the Department of Social Welfare. The Coloured Persons Settlement Act (Act no 7 of 1946) provided the legal basis for the reservation of new Coloured areas. Furthermore, the Rural Coloured Areas Act (Act 24 of 1963) provided for the incorporation of land already occupied by coloured communities. In future, the Government regarded CRAs as Rural Group Areas, where coloured people could get title to farmland and practice commercial agriculture. This differentiated residential from agricultural zones, and stipulated that previous commonage be made to “*bona fide* farmers” – a term which seemed to refer to full-time farmers.²⁰

There have long been indications of growing class distinctions within the CRAs. The 1909 Act legally sanctioned the “kulak” (wealthier peasant) class, as access to “sub-economic” units on a permanent basis was undermined.²¹ The missionaries also encouraged a progressive and productive peasant class. This led to an increase in the size of land-holdings by certain individuals and impoverishment for others.²² Residents with capital, skills or secure employment also had an advantage; they were relatively mobile and could survive recessions by migrating for work. People without such assets suffered increasing impoverishment.²³ Since the 1960s, Government has focused on creating a class of independent commercial farmers – an endeavour which caused confusion and conflict, and which has always been in conflict with the dominant trend of utilising farming as a survivalist strategy in times of economic need.²⁴

¹⁸ Dunne, J, 1986, *Regional Development Strategy for Namaqualand*, 70, citing Luyt.

¹⁹ Sharp, JS (1984), “Rural Development Schemes and the Struggle against Impoverishment in the Namaqualand Reserves” (1984).

²⁰ Dunne, J, 1986, *Regional Development Strategy for Namaqualand*, p. 39.

²¹ Dunne, JM, 1986, *Towards a Regional Development Strategy for Namaqualand*, p. 71, citing D Luyt, “The Transition to Capitalism in the Namaqualand Reserves”, unpublished paper, UCT, 1982.

²² In the Richtersveld, particularly, there was a distinct difference between the land tenure reforms in the south of the “Reserve” (where the land was divided by Government into “economic units”, available to larger or full-time farmers), and the north of the “Reserve” (where the communal land use system was retained) (Jurgens, N, 2001, Remarkable Differences in Desertification Processes)

²³ Dunne, J, 1986, *Regional Development Strategy for Namaqualand*, p. 73.

²⁴ Berzborn, S and Schnegg, M, 2007, Vulnerability, social networks, and resilience.

The insecure and non-permanent employment on the farms and mines meant that inhabitants in the communal areas were reluctant to sever their connections with the soil, which acted as the only form of security in their livelihoods. On these "Reserves", a large "surplus population" developed, who had no means of subsistence and no recourse to permanent wage labour. In fact, several interests wanted these people off the land – the elite peasants, the mines and the famers.

The communal areas continued to create a sense of community, because each dweller possesses a formal, communal title to the land. Furthermore, urban areas in Namaqualand have remained limited in terms of investment, and this slowed down out-migration and the formation of wider identities. The communal areas continued to offer security in the face of retrenchment, unemployment or retirement.²⁵

By the 1980s, the Department of Local Government, Housing and Agriculture of the House of Representatives administered Namaqualand and other CRAs, under the provisions of the Rural Coloured Areas Law (1979). There are six "CRAs" (Coloured Rural Areas) in Namaqualand.

In practice, it has been very difficult to finalise governance institutions on communal land, due to complex dynamics within the communities and the lack of agricultural management capacity of the municipalities who should oversee the process.²⁶ It requires a delicate process of facilitation to grapple with these dynamics, and government institutions do not have the level of staffing and skills which would be required. This has blocked the "TRANCRAA process" and created a stalemate in some communities. The funding and institutional support required to carry out tenure reform was under-estimated by government. Reformed tenure rights are often ineffective and vulnerable if isolated from other entitlements such as training, finance and integrated development initiatives. Some of the communal management institutions remain weak, with inadequate institutional rules to ensure sustainable and profitable land use. This legal uncertainty has been described by some authors as a "tragedy of the commons" phenomenon, where ineffective institutions cause land users to over-exploit land resources (such as grazing).²⁷ Other authors dispute this depiction of the negative impacts of communal management. There may be some regional variation in the impacts of communal management on the environment.

The TRANCRAA Trust Land is still held by the Minister in terms of the Act of 1998. It is awaiting transfer to communities, pending the establishment of legal entities as communities have opted. In addition to the TRANCRAA and CPA legislation, the Spatial Planning and Land Use Management Act (2013) requires a proper land rights inquiry to be done to align the transfer of the land with the Spatial Development Framework of the relevant Municipality.²⁸ Thus far, different Act 9 communal areas have chosen somewhat different types of legal entity for future land management. Concordia, Pella, Steinkopf and Richtersveld have chosen CPAs. Leliefontein has chosen to remain under the Kamiesberg Local Municipality. Komaggas has not yet settled on a choice.²⁹ The first transfer has been made to the Concordia community in 2024, and the CPA therefore now has ownership and a title deed.

Since 1997, all municipal commonages received additional land (more than 300 000 ha) by means of farms bought by the then Department of Land Affairs (now Department of Rural Development and Land Reform) in terms of the Land Redistribution Act. Through this, grazing areas were expanded, and commonages could keep higher numbers of livestock. These newly bought farms are managed by commonage committees that consist of representatives of the users, municipalities, and the Northern Cape Department of Agriculture, Environmental Affairs, Land Reform and Rural Development (DAELR).

However, under the ineffective tutelage of the municipalities, there appears to be a process of "elite capture" of these newly acquired commonage farms, with wealthier farmers dominating local institutions and promoting their own land-use interests as larger-scale, full-time farmers.³⁰ These newly acquired commonage farms are often located far from people's place of residence in the towns, and require a "shuttle" mode of farming, where livestock owners and herders need to "commute" to the farms. This means that farmers need vehicles to access their livestock, and that again favours the wealthier farmers.

²⁵ Dunne, J, 1986, *Regional Development Strategy for Namaqualand*, 75, citing Klinghardt.

²⁶ For example, in Komaggas. See Bregman, J, 2010, *Land and Society in the Komaggas region*.

²⁷ Wisborg, P, 2003, TRANCRAA and communal land rights: Lessons from Namaqualand.

²⁸ DALRRD, *Namakwa Spatial Framework*, 2023, p. 62.

²⁹ DALRRD, *Namakwa Spatial Framework*, 2023, p. 62.

³⁰ Lebert, T and Rohde, R, 2007. Land reform and the new elite.

In addition, these commonage farms create a financial burden for municipalities: To allow poor people access to commonage implies that the municipality must subsidize those users by either leasing the land at low rates (i.e. below the real cost of maintenance), or skimp on their maintenance responsibilities. The lack of administrative and financial capacity within municipalities makes it difficult for them to manage the commonage land effectively — both in terms of regulating access and maintaining physical infrastructure such as fences and water-points — and to ensure that the poor (those who are least able to pay user fees) are the primary beneficiaries of this land.³¹

³¹ May, H and Lahiff, E, 2007, Land reform in Namaqualand, 1994–2005: A review.