

FINAL BASIC ASSESSMENT REPORT

APPENDIX  
C



Maps



# CONTENTS

<b>C. 1: Proposed 132 kV overhead powerline routing</b>	<b>1</b>
<b>C. 2: Environmental Sensitivity Maps</b>	<b>3</b>

# FIGURES

<b>Figure C.1: Locality of the seven proposed 132 kV overhead transmission powerline projects situated south of Beaufort West in the Western Cape</b>	<b>1</b>
<b>Figure C.2: The proposed Kwagga EGI Section 5 of the 132 kV overhead powerline corridor, which extends between the proposed authorised on-site substation hubs at the Kwagga WEF 2 site and the Kwagga WEF 1 site</b>	<b>2</b>
<b>Figure C.3: Civil Aviation Features relative to the seven proposed 132 kV overhead transmission powerline projects site based on the</b>	<b>3</b>
<b>Figure C.4: Defence Features relative to the seven proposed 132 kV overhead transmission powerline projects site based on the</b>	<b>4</b>
<b>Figure C.5: Combined environmental sensitivity map for the proposed 132 kV overhead powerline i.e. Section 5 of the Kwagga EGI corridor, which extends between the proposed authorised on-site substation hubs at the Kwagga WEF 2 site and the Kwagga WEF 1 site</b>	<b>5</b>
<b>Figure C.6: Environmental features map for the proposed 132 kV overhead powerline i.e. Section 5 of the Kwagga EGI corridor, which extends between the proposed authorised on-site substation hubs at the Kwagga WEF 2 site and the Kwagga WEF 1 site</b>	<b>6</b>
<b>Figure C.7: Visual sensitivity map for the proposed 132 kV overhead powerline i.e. Section 5 of the Kwagga EGI corridor, which extends between the proposed authorised on-site substation hubs at the Kwagga WEF 2 site and the Kwagga WEF 1 site</b>	<b>7</b>
<b>Figure C.8: Avifauna sensitivity map for the proposed 132 kV overhead powerline i.e. Section 5 of the Kwagga EGI corridor, which extends between the proposed authorised on-site substation hubs at the Kwagga WEF 2 site and the Kwagga WEF 1 site</b>	<b>8</b>
<b>Figure C.9: Heritage sensitivity map for the proposed 132 kV overhead powerline i.e. Section 5 of the Kwagga EGI corridor, which extends between the proposed authorised on-site substation hubs at the Kwagga WEF 2 site and the Kwagga WEF 1 site</b>	<b>9</b>
<b>Figure C.10: Palaeontological sensitivity map for the proposed 132 kV overhead powerline i.e. Section 5 of the Kwagga EGI corridor, which extends between the proposed authorised on-site substation hubs at the Kwagga WEF 2 site and the Kwagga WEF 1 site</b>	<b>10</b>
<b>Figure C.11: Terrestrial Biodiversity and Aquatic sensitivity map for the proposed 132 kV overhead powerline i.e. Section 5 of the Kwagga EGI corridor, which extends between the proposed authorised on-site substation hubs at the Kwagga WEF 2 site and the Kwagga WEF 1 site</b>	<b>11</b>



**C. 1: Proposed 132 kV overhead powerline routing**

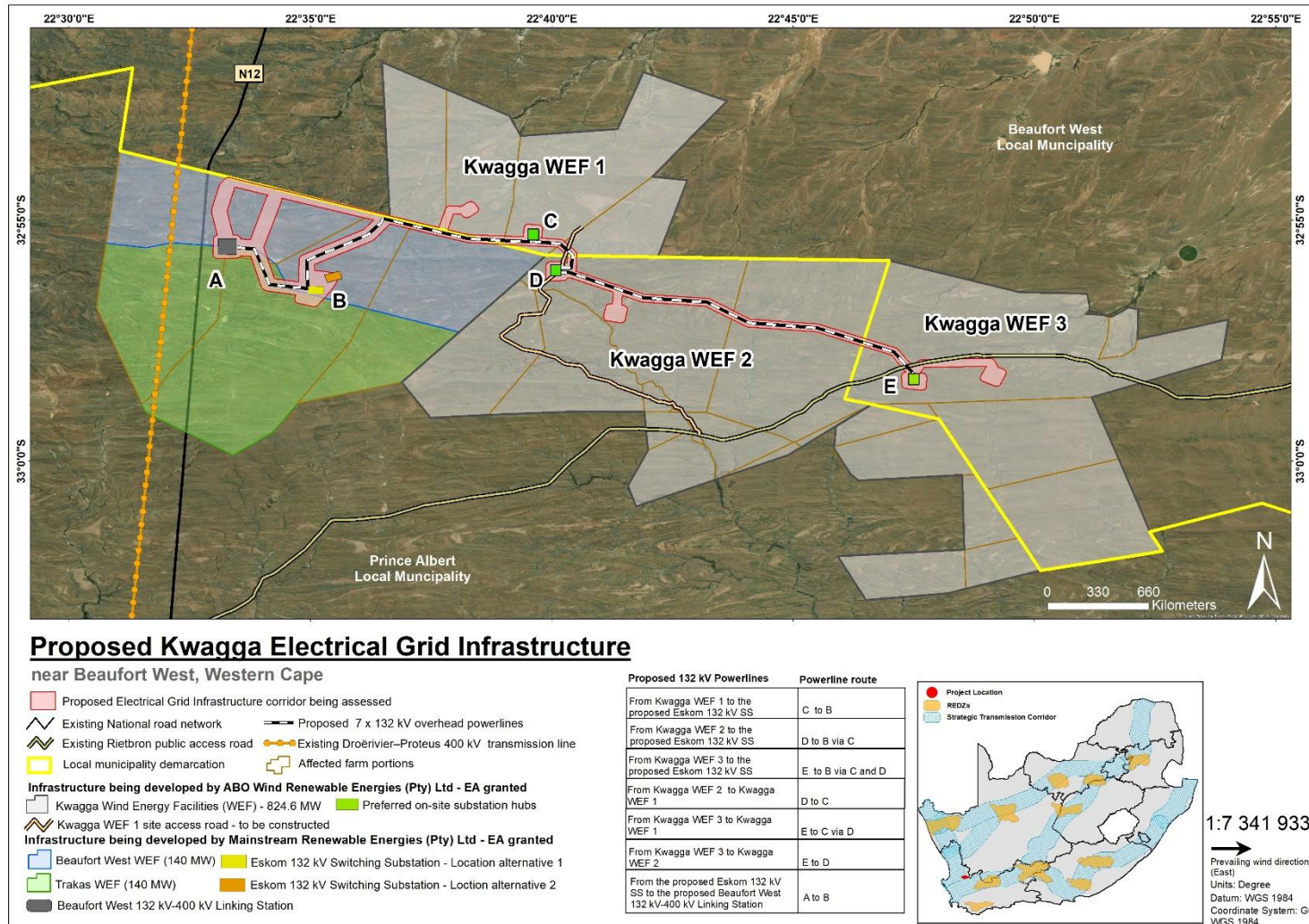


Figure C.1: Locality of the seven proposed 132 kV overhead transmission powerline projects situated south of Beaufort West in the Western Cape

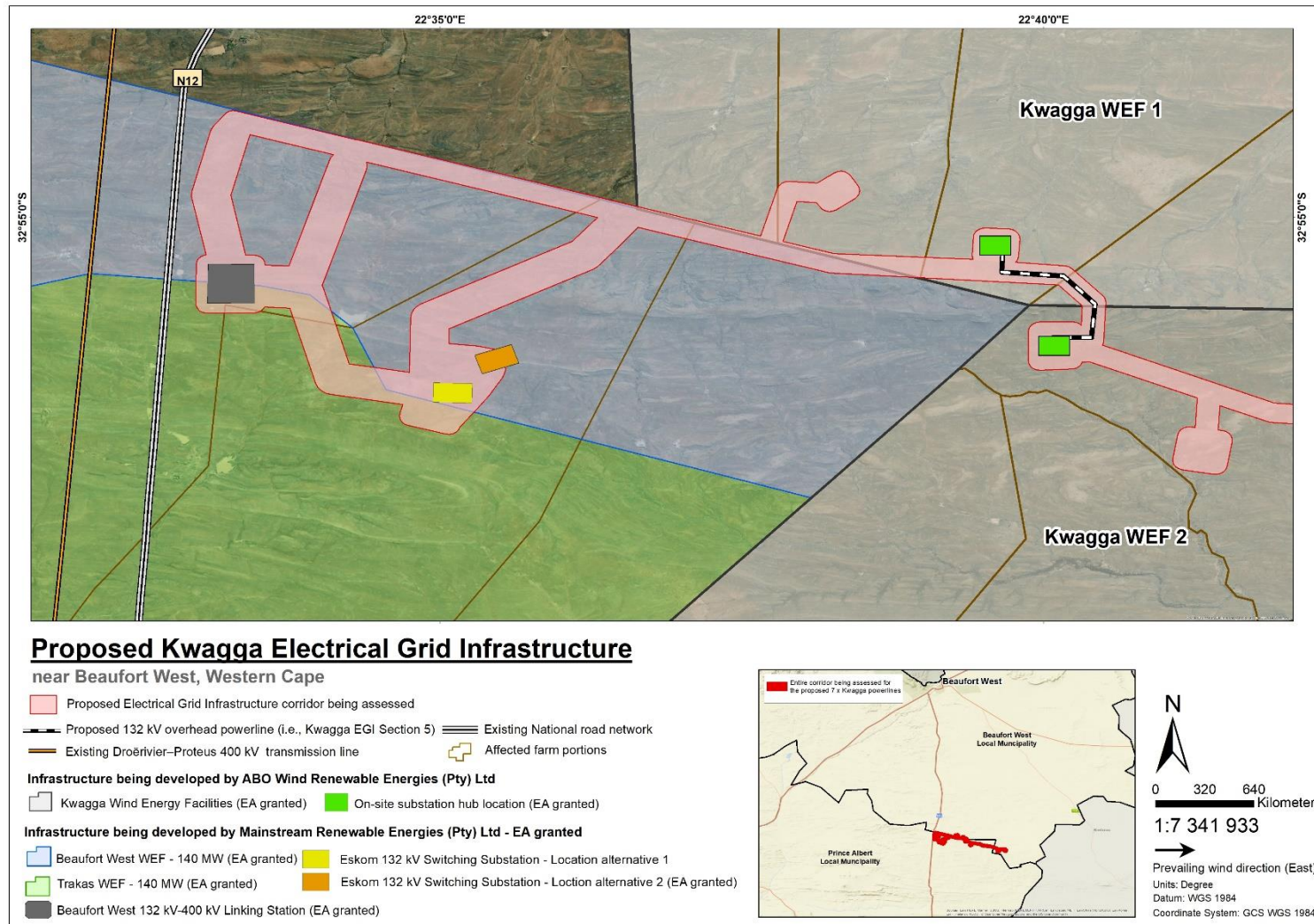


Figure C.2: The proposed Kwagga EGI Section 5 of the 132 kV overhead powerline corridor, which extends between the proposed authorised on-site substation hubs at the Kwagga WEF 2 site and the Kwagga WEF 1 site



C. 2: Environmental Sensitivity Maps

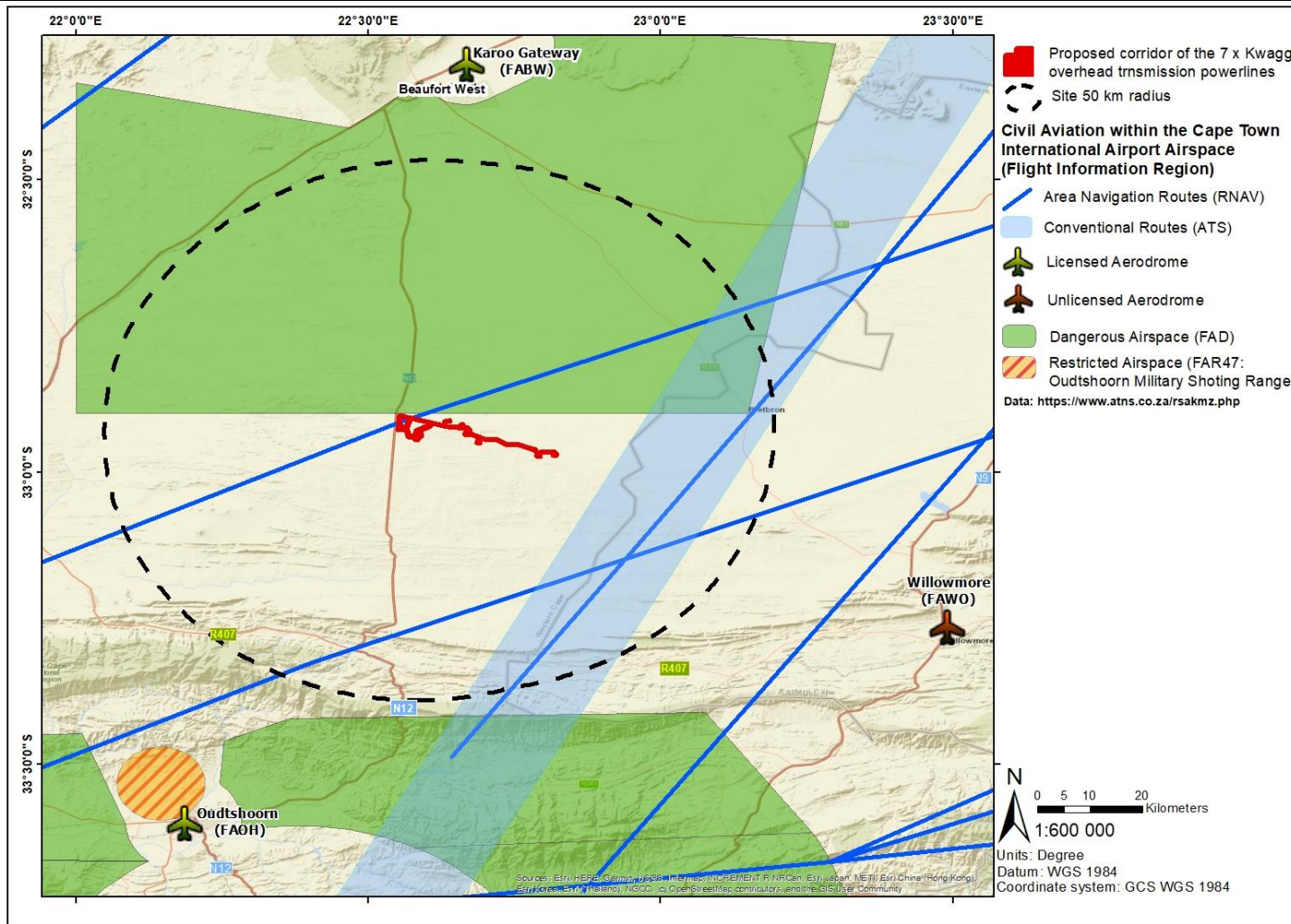


Figure C.3: Civil Aviation Features relative to the seven proposed 132 kV overhead transmission powerline projects site based on the Site Sensitivity Verification.

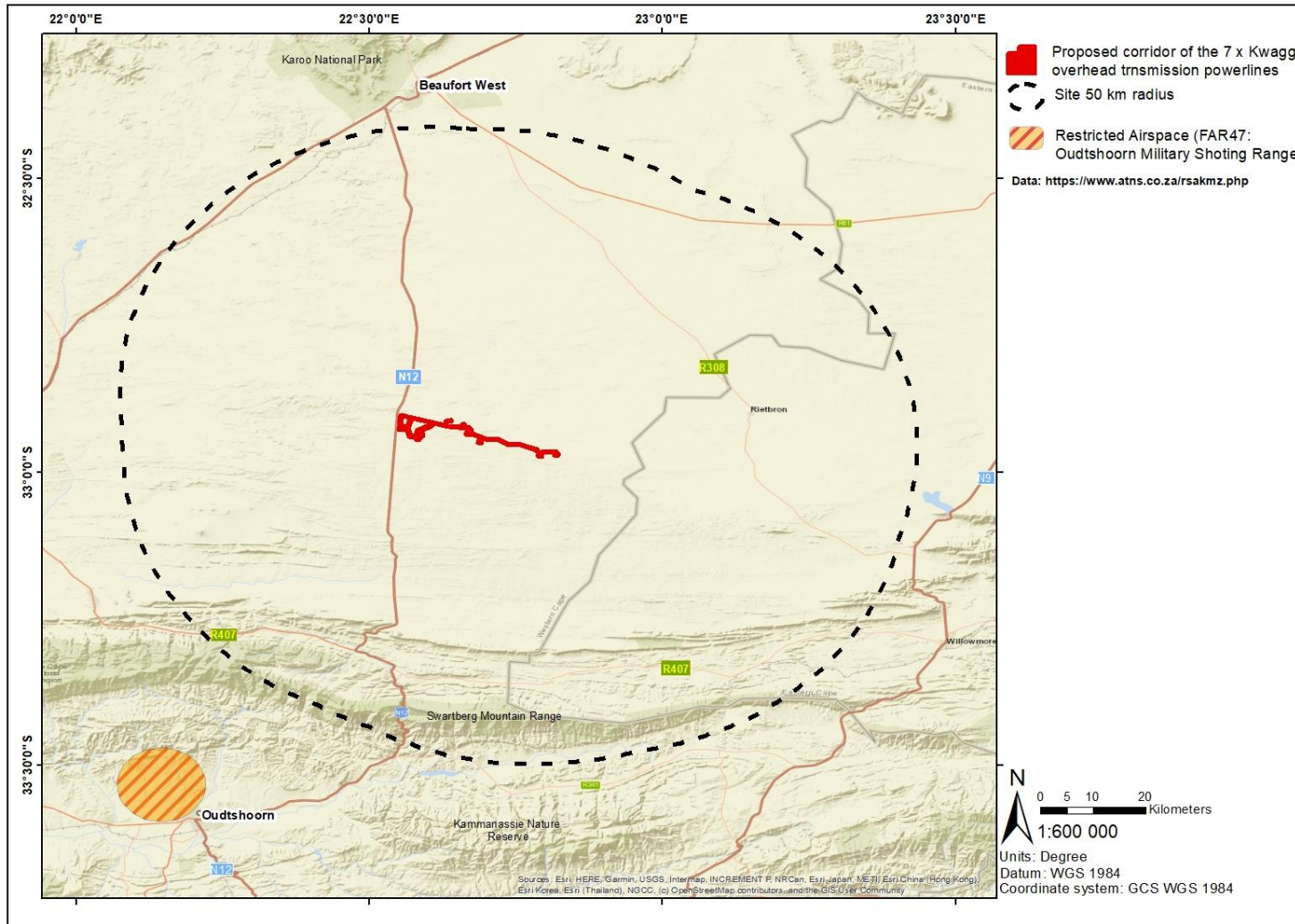


Figure C.4: Defence Features relative to the seven proposed 132 kV overhead transmission powerline projects site based on the Site Sensitivity Verification.



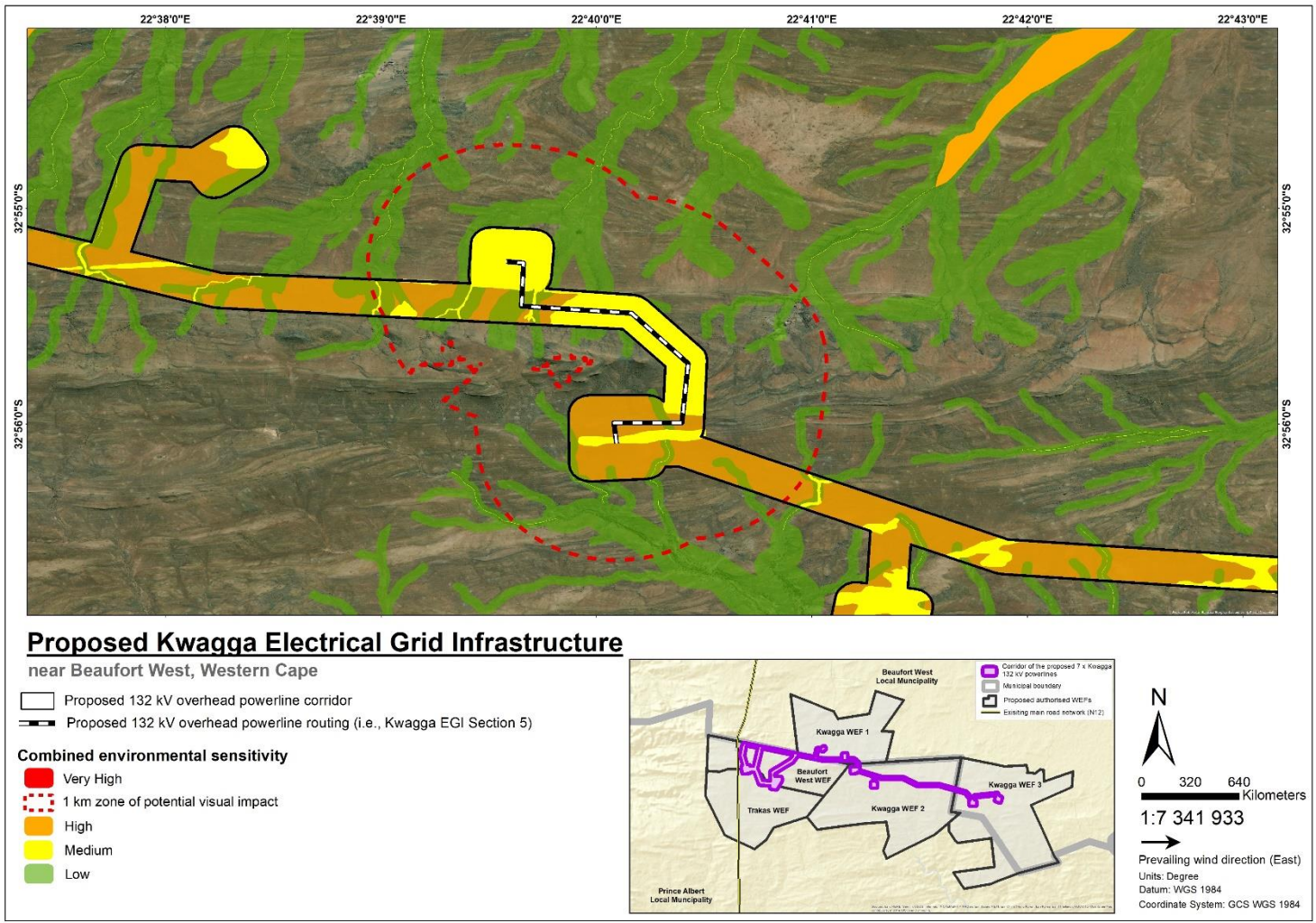


Figure C.5: Combined environmental sensitivity map for the proposed 132 kV overhead powerline i.e. Section 5 of the Kwagga EGI corridor, which extends between the proposed authorised on-site substation hubs at the Kwagga WEF 2 site and the Kwagga WEF 1 site



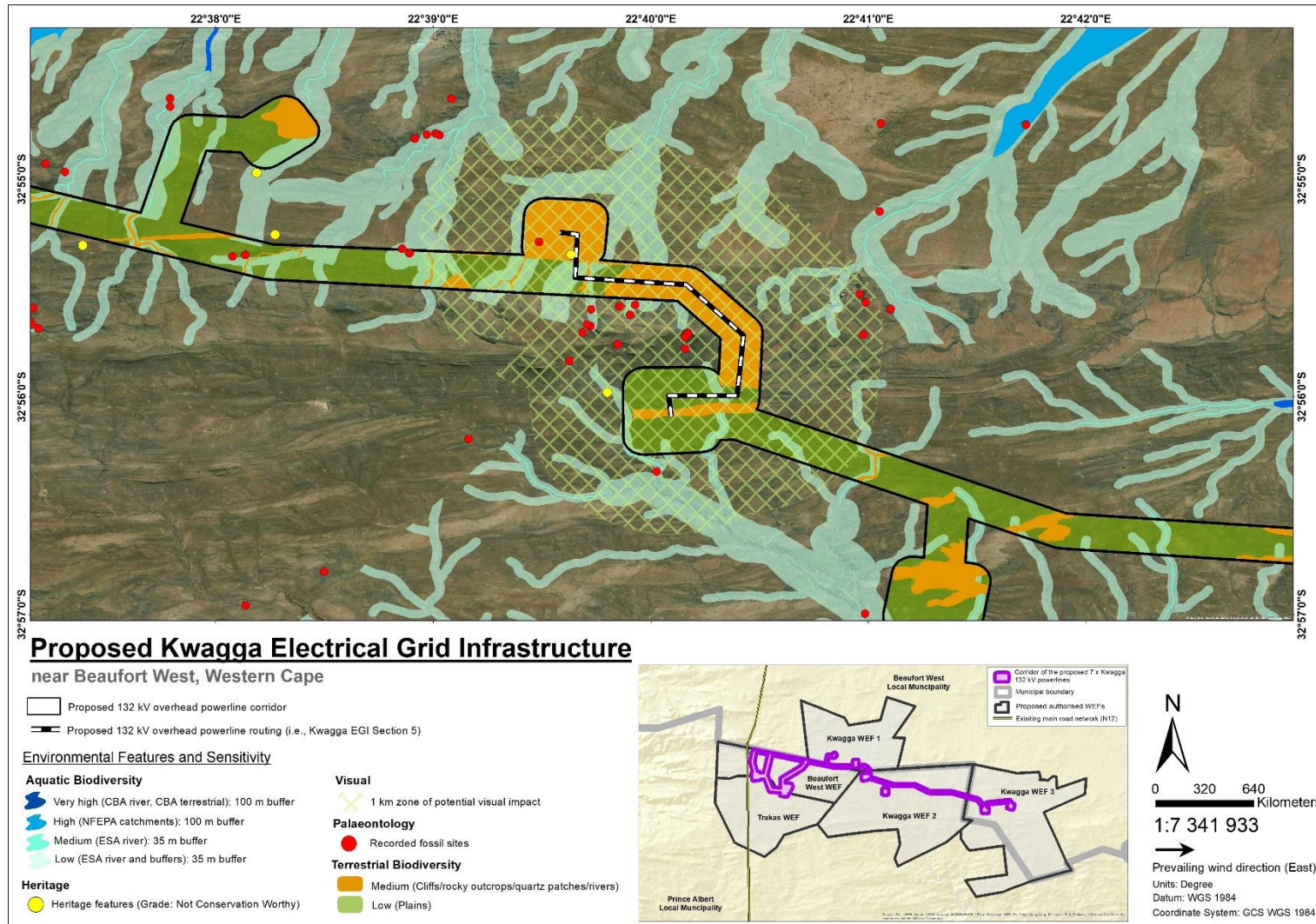


Figure C.6: Environmental features map for the proposed 132 kV overhead powerline i.e. Section 5 of the Kwagga EGI corridor, which extends between the proposed authorised on-site substation hubs at the Kwagga WEF 2 site and the Kwagga WEF 1 site



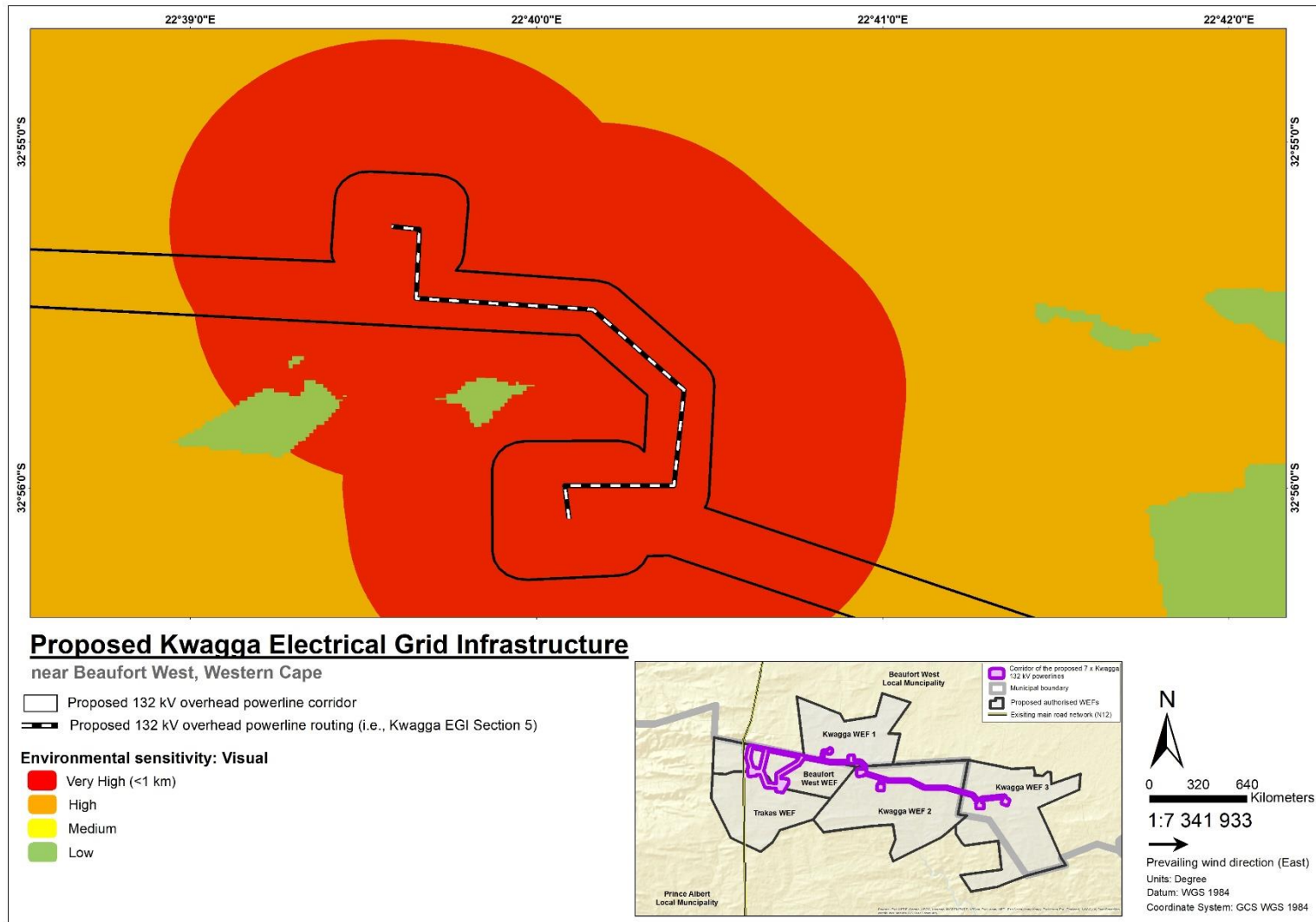


Figure C.7: Visual sensitivity map for the proposed 132 kV overhead powerline i.e. Section 5 of the Kwagga EGI corridor, which extends between the proposed authorised on-site substation hubs at the Kwagga WEF 2 site and the Kwagga WEF 1 site

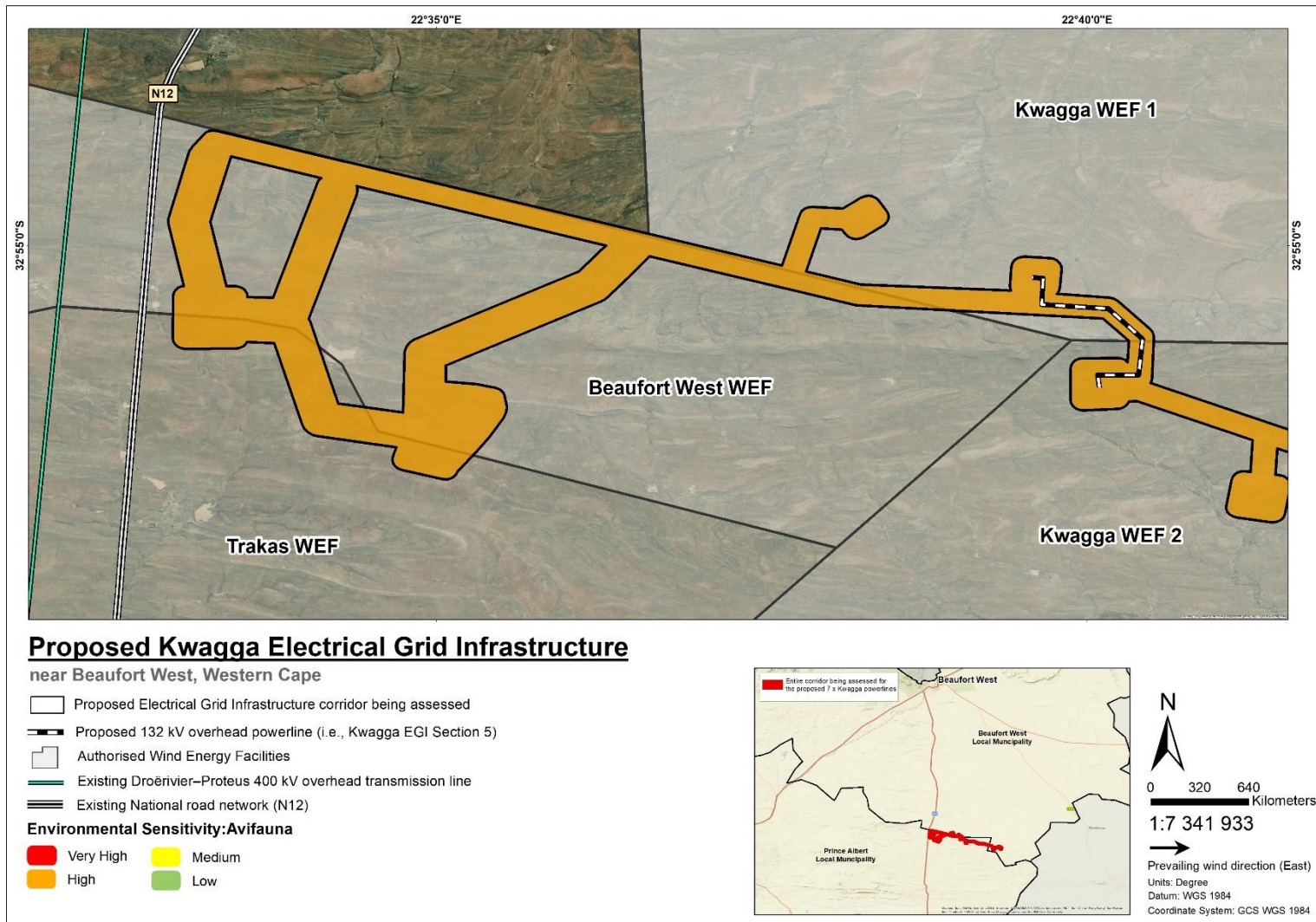


Figure C.8: Avifauna sensitivity map for the proposed 132 kV overhead powerline i.e. Section 5 of the Kwagga EGI corridor, which extends between the proposed authorised on-site substation hubs at the Kwagga WEF 2 site and the Kwagga WEF 1 site



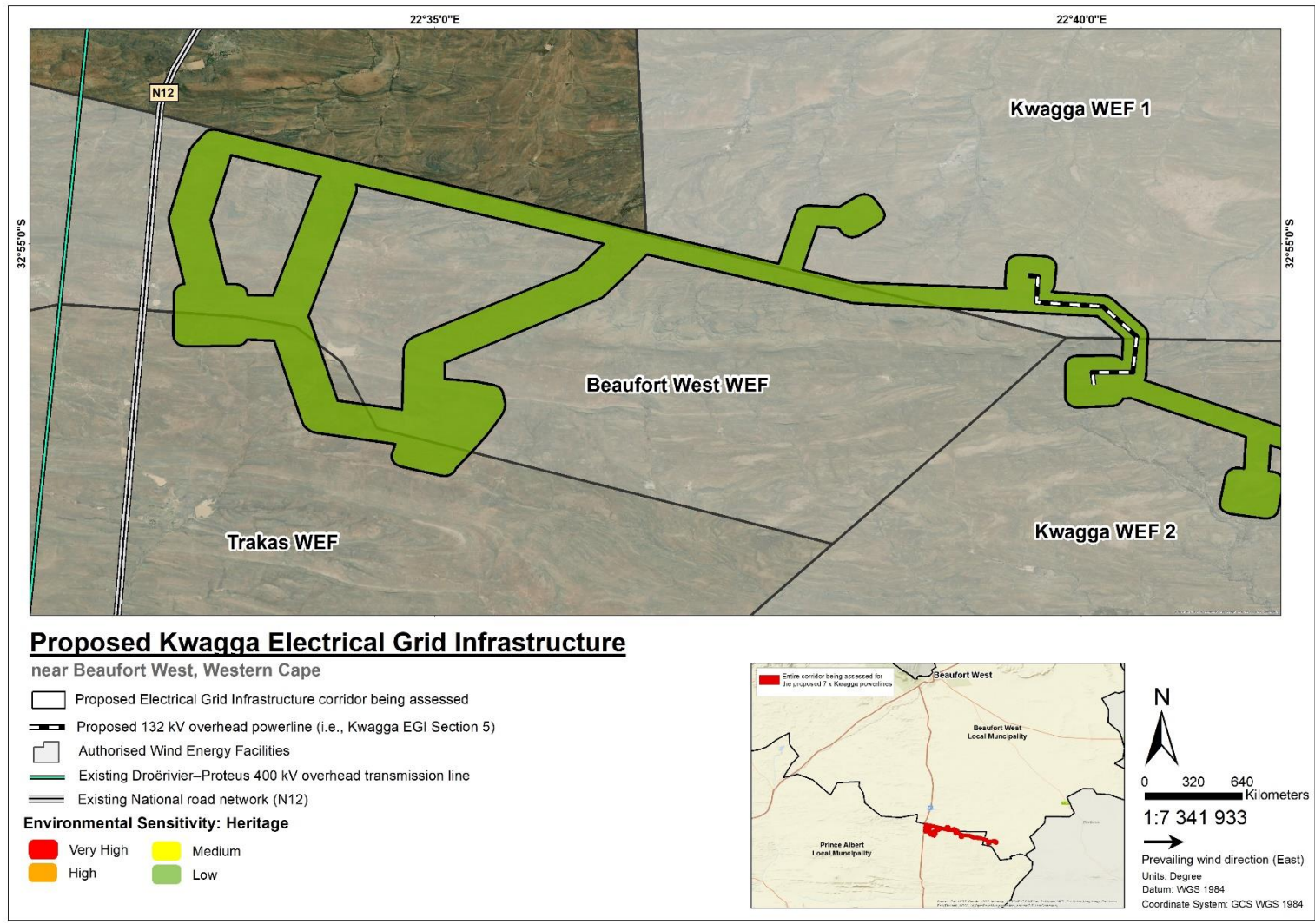


Figure C.9: Heritage sensitivity map for the proposed 132 kV overhead powerline i.e. Section 5 of the Kwagga EGI corridor, which extends between the proposed authorised on-site substation hubs at the Kwagga WEF 2 site and the Kwagga WEF 1 site

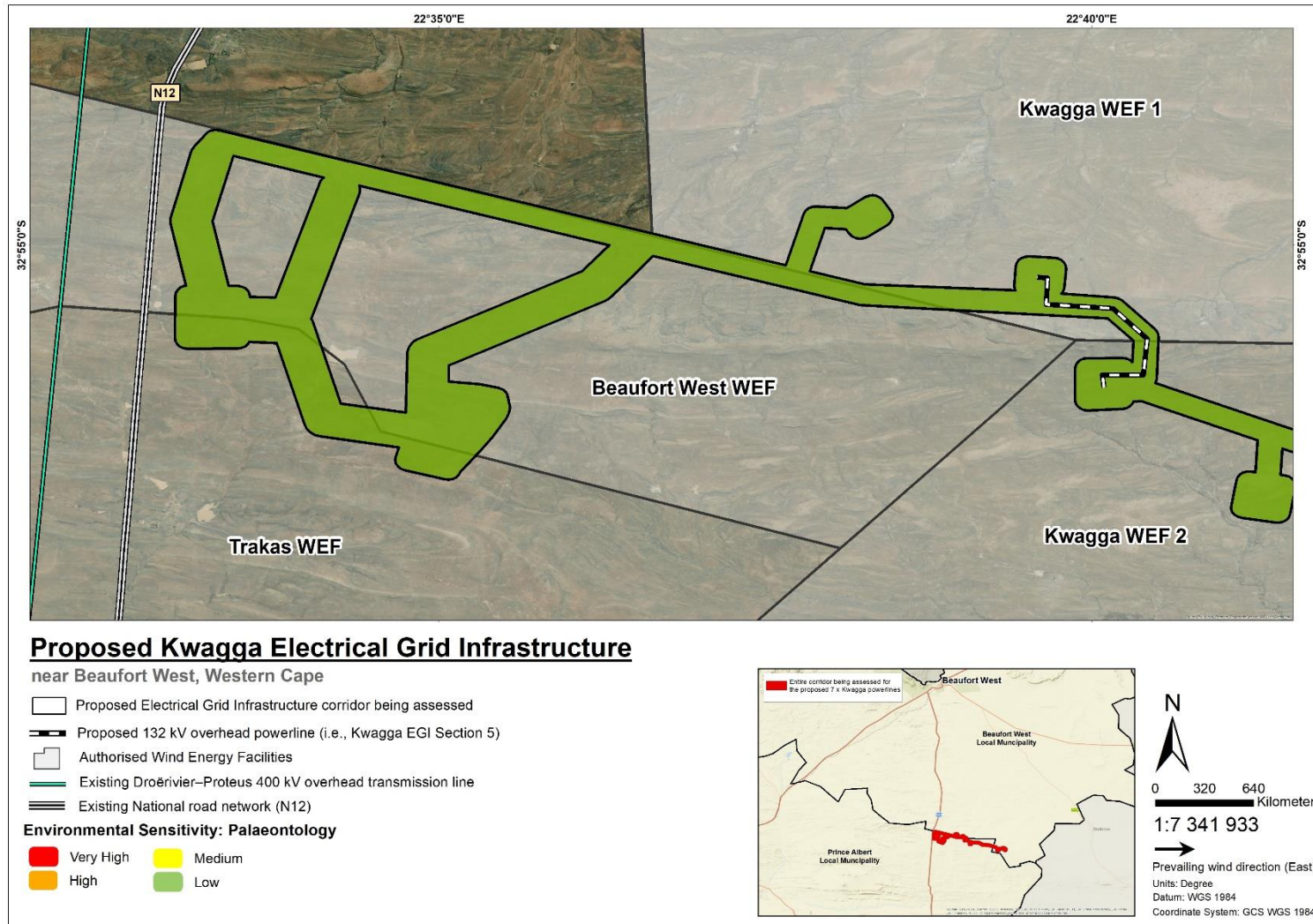


Figure C.10: Palaeontological sensitivity map for the proposed 132 kV overhead powerline i.e. Section 5 of the Kwagga EGI corridor, which extends between the proposed authorised on-site substation hubs at the Kwagga WEF 2 site and the Kwagga WEF 1 site



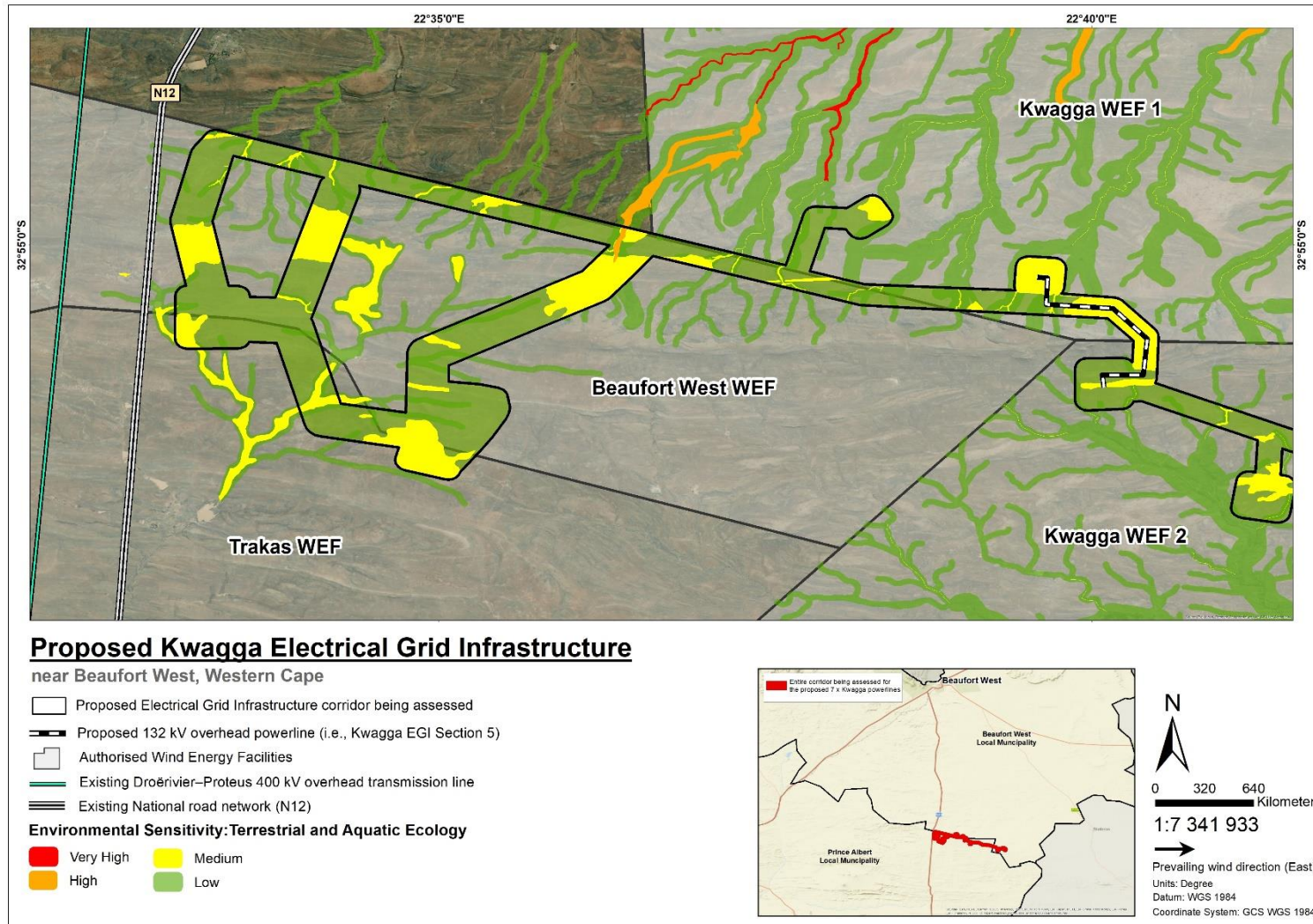


Figure C.11: Terrestrial Biodiversity and Aquatic sensitivity map for the proposed 132 kV overhead powerline i.e. Section 5 of the Kwagga EGI corridor, which extends between the proposed authorised on-site substation hubs at the Kwagga WEF 2 site and the Kwagga WEF 1 site