

Scoping and Environmental Impact Assessment for the Proposed  
Development of the 279 MW Wind Energy Facility and associated  
Infrastructure (i.e. Kwagga WEF 1), near Beaufort West, Western Cape

# APPENDIX H

## Maps

Appendix H.1: Environmental Sensitivity Map  
Appendix H.2: Site Layout Plan





# Table of Contents

---

H. 1: Environmental Sensitivity Maps	1
H. 2: Site Layout Plans	9



# List of Figures

---

Figure H.1: Site layout plan for the proposed Kwagga WEF 1 project, which was subjected to detailed specialist assessment during the EIA Phase, overlain onto the Screening Tool map as it relates to Civil Aviation.	1
Figure H.2: Refined site layout plan for the proposed Kwagga WEF 1 project following the outcome of the Aviation Operational Impact Assessment, overlain onto the Screening Tool as it relates to Civil Aviation. Turbine positions (indicated in yellow) are located in “dangerous and restricted airspace” and turbine positions (indicated in blue) are located in “uncontrolled airspace”.	2
Figure H.3: Combined site layout and environmental features map for the proposed Kwagga WEF 1 project site.	3
Figure H.4: Combined environmental sensitivity map excluding visual sensitivity for the proposed Kwagga WEF 1 project site.	4
Figure H.5: Combined site layout and environmental sensitivity map excluding visual sensitivity for the proposed Kwagga WEF 1 project showing the main access road.	5
Figure H.6: Combined site layout and environmental sensitivity map including visual sensitivity for the proposed Kwagga WEF 1 project showing the main access road.	6
Figure H.7: Combined site layout and environmental sensitivity map excluding visual sensitivity for the proposed Kwagga WEF 1 project site.	7
Figure H.8: Combined site layout and environmental sensitivity map including visual sensitivity for the proposed Kwagga WEF 1 project site.	8
Figure H.9: Locality map for the proposed Kwagga WEF 1 project showing the main access road near Beaufort West in the Western Cape.	9
Figure H.10: Site layout plan for the proposed Kwagga WEF 1 illustrating the position of project components as revised following the outcome of the high-level specialist assessments done during the Scoping Phase. This revised site layout plan was subjected to detailed specialist assessment during the EIA Phase.	10
Figure H.11: The refined and confirmed site layout plan for the proposed Kwagga WEF 1 project following the outcome of the Aviation Operational Impact Assessment. Turbine positions (indicated in yellow) are located in ‘dangerous and restricted airspace’ and turbine positions (indicated in blue) are located in ‘uncontrolled airspace’.	11

## H. 1: Environmental Sensitivity Maps

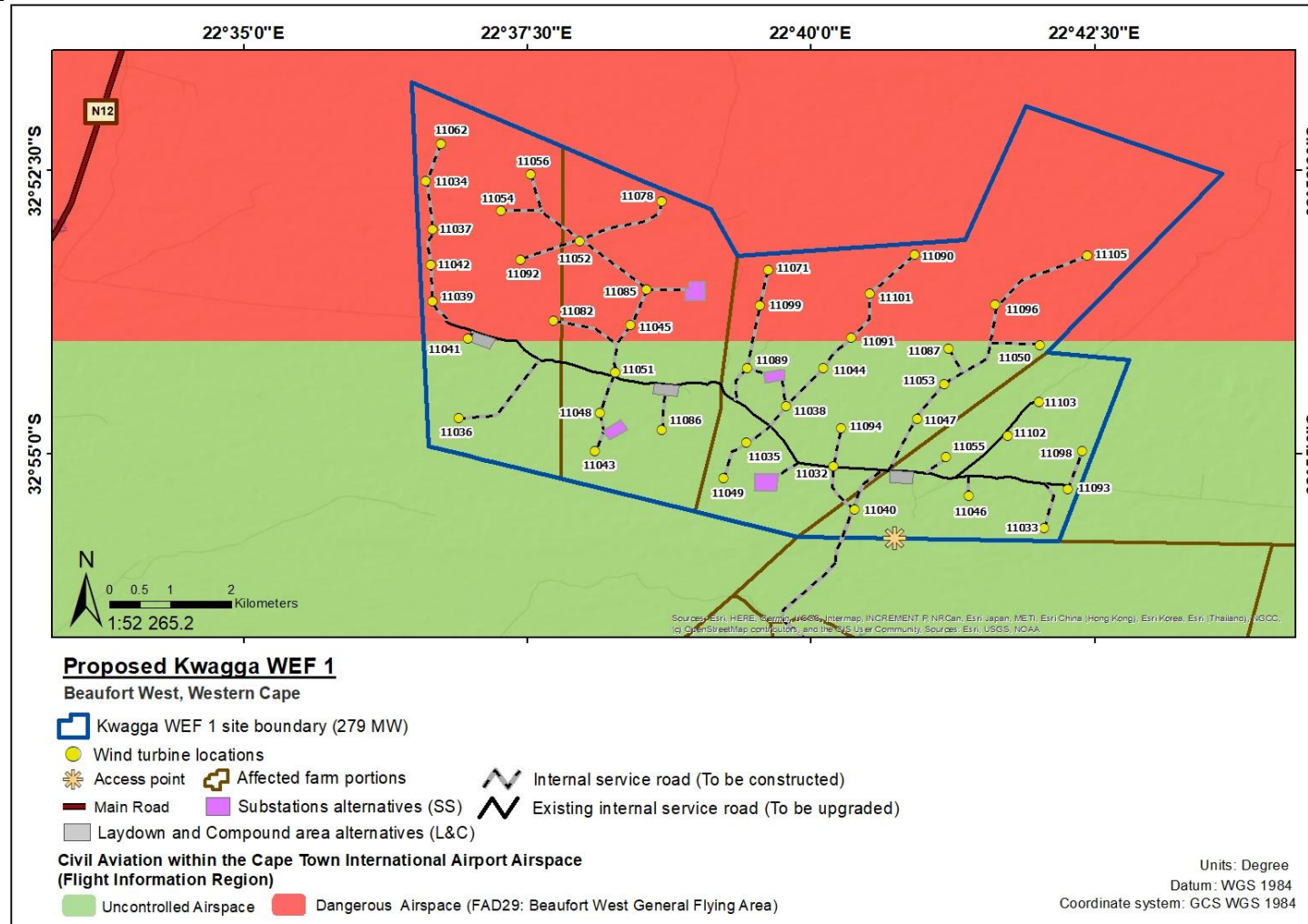


Figure H.1: Site layout plan for the proposed Kwagga WEF 1 project, which was subjected to detailed specialist assessment during the EIA Phase, overlain onto the Screening Tool map as it relates to Civil Aviation.

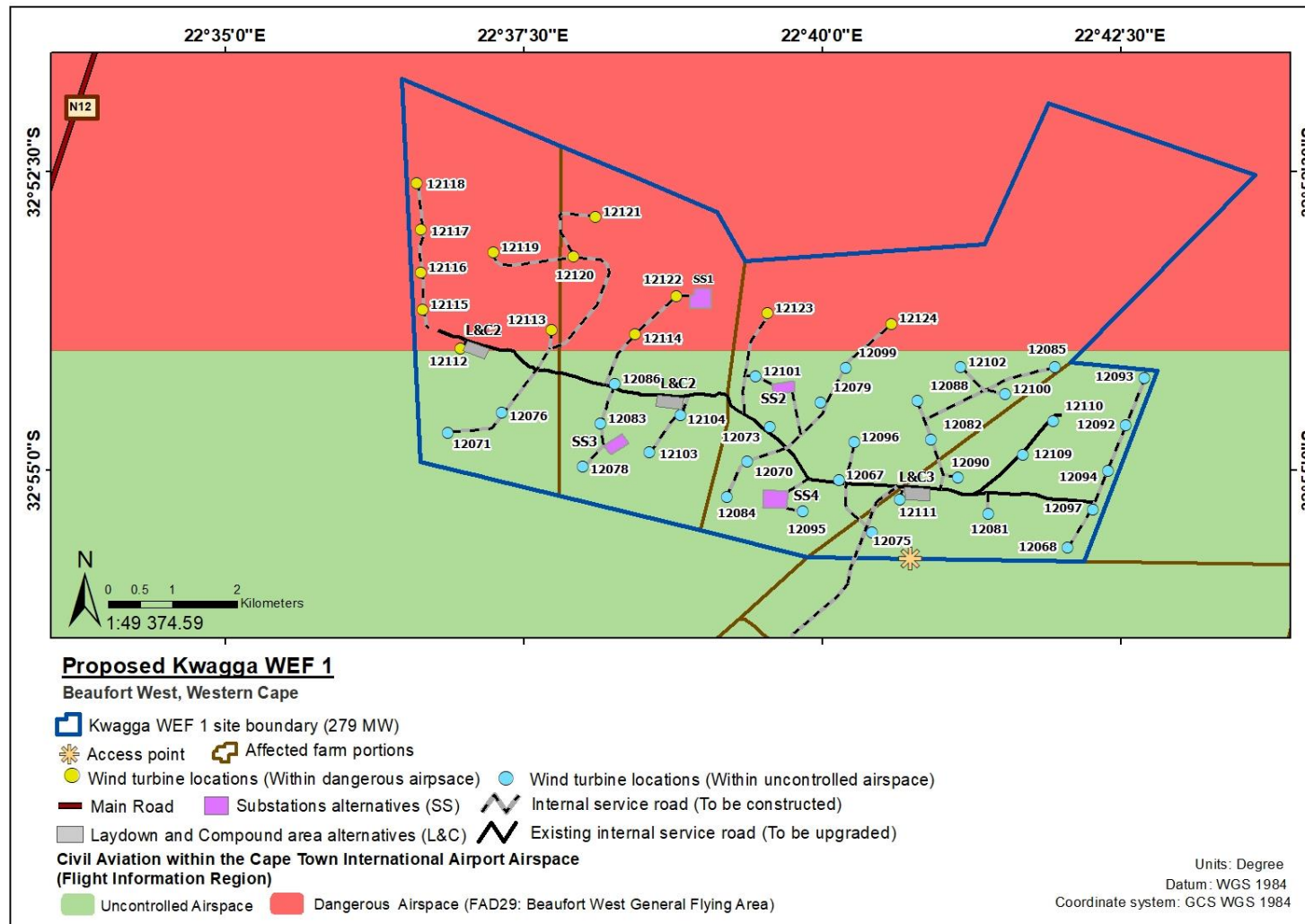


Figure H.2: Refined site layout plan for the proposed Kwagga WEF 1 project following the outcome of the Aviation Operational Impact Assessment, overlain onto the Screening Tool as it relates to Civil Aviation. Turbine positions (indicated in yellow) are located in “dangerous and restricted airspace” and turbine positions (indicated in blue) are located in “uncontrolled airspace”.



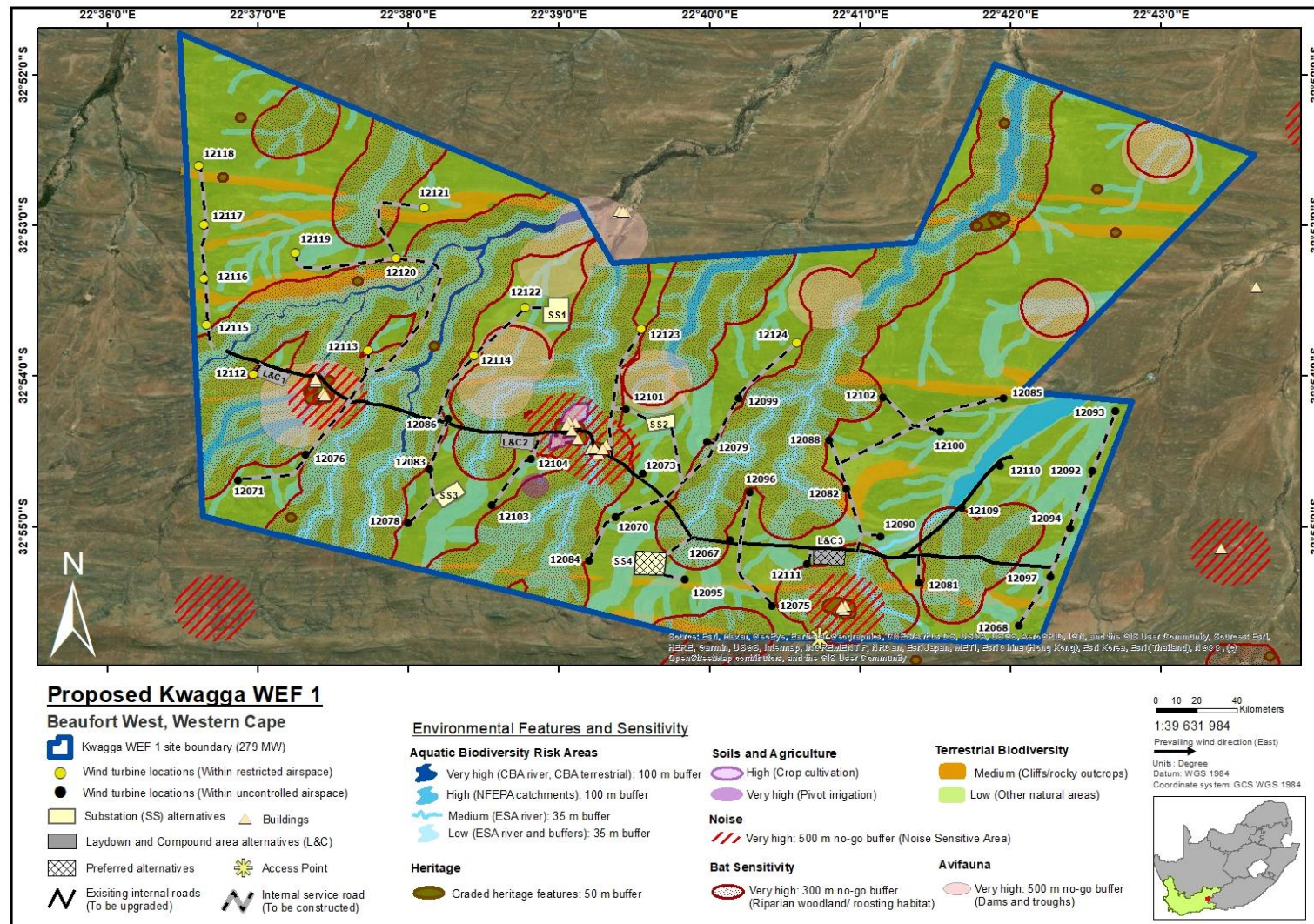


Figure H.3: Combined site layout and environmental features map for the proposed Kwagga WEF 1 project site.



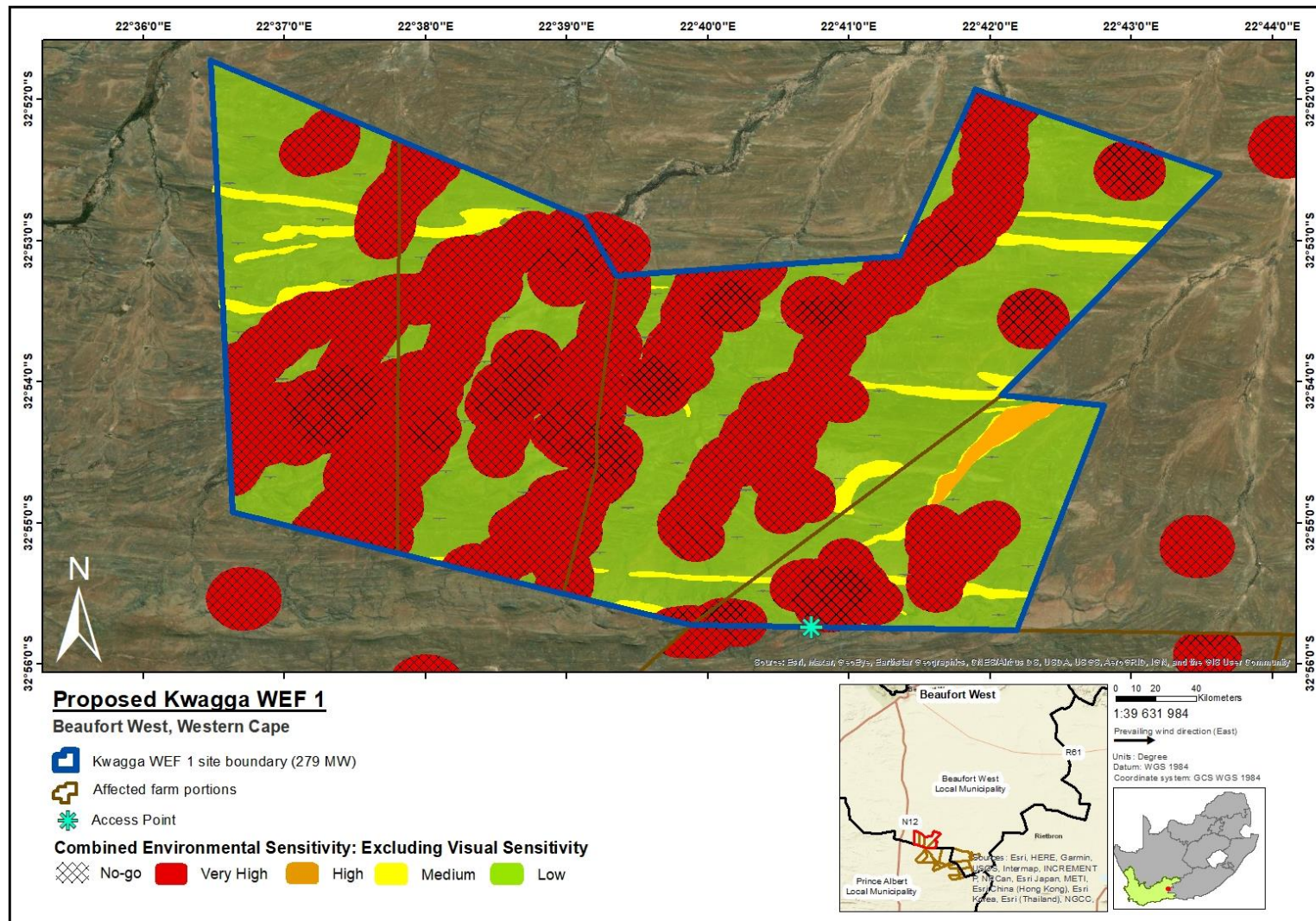


Figure H.4: Combined environmental sensitivity map excluding visual sensitivity for the proposed Kwagga WEF 1 project site.



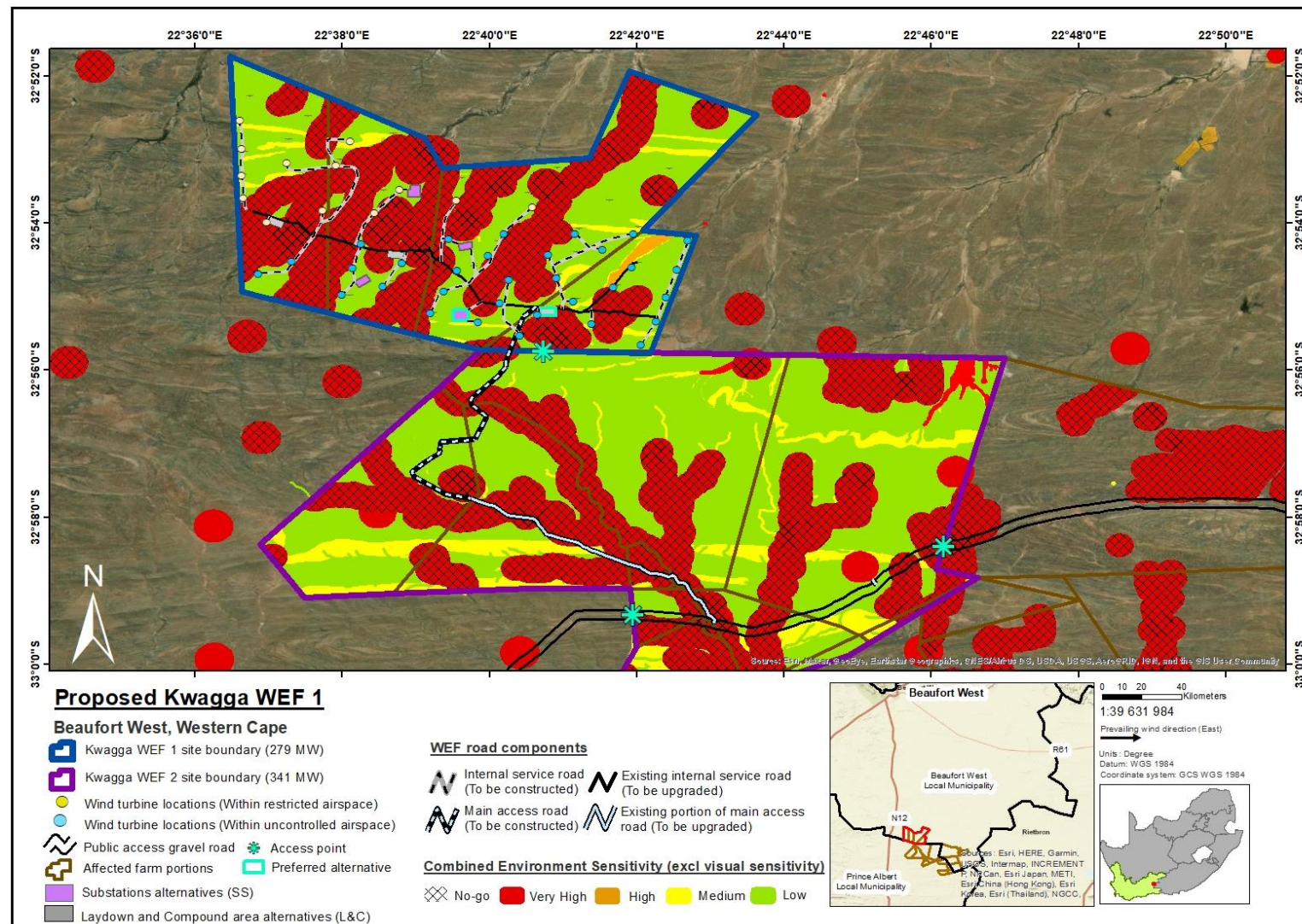
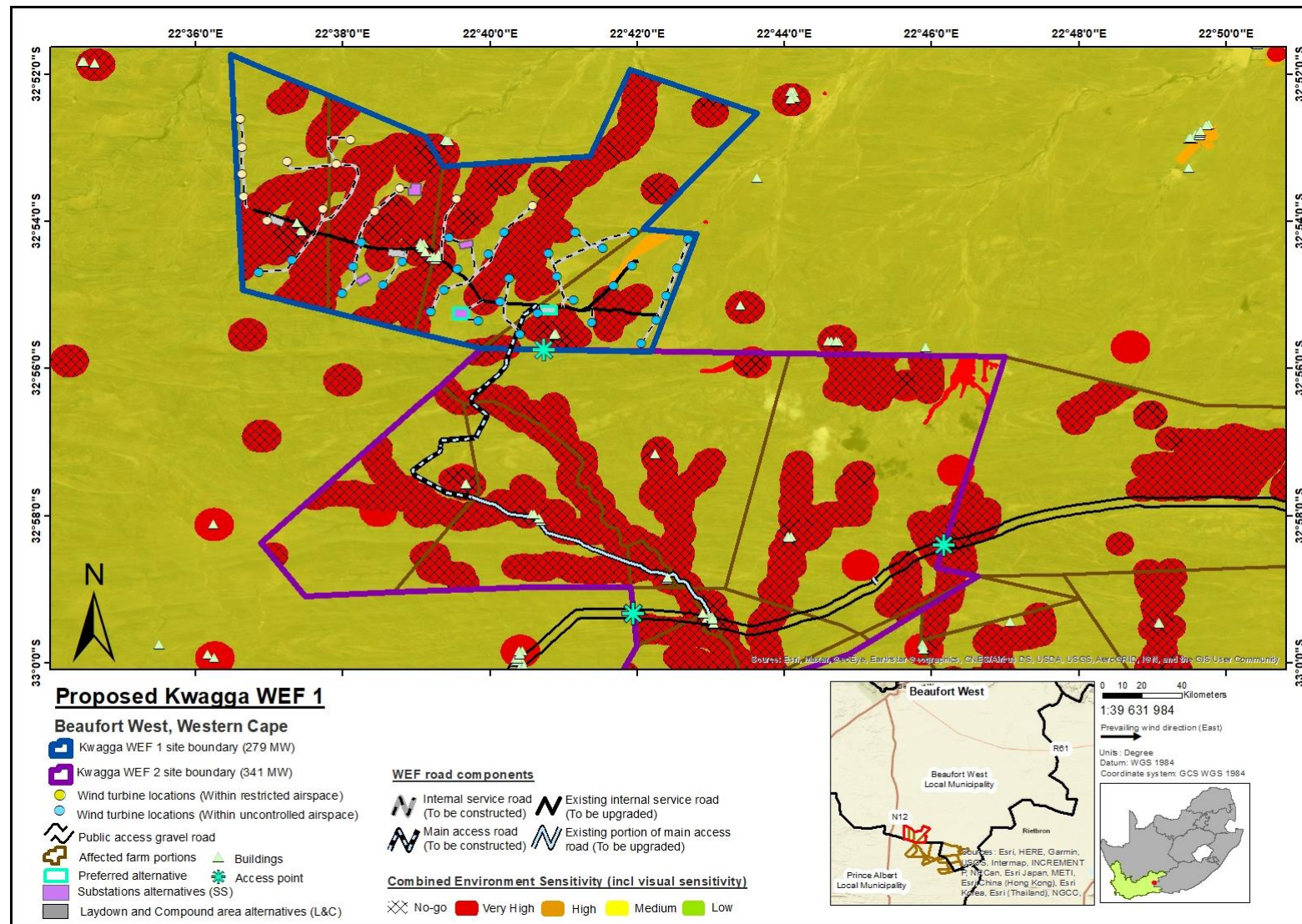


Figure H.5: Combined site layout and environmental sensitivity map excluding visual sensitivity for the proposed Kwagga WEF 1 project showing the main access road.





**Figure H.6: Combined site layout and environmental sensitivity map including visual sensitivity for the proposed Kwagga WEF 1 project showing the main access road.**



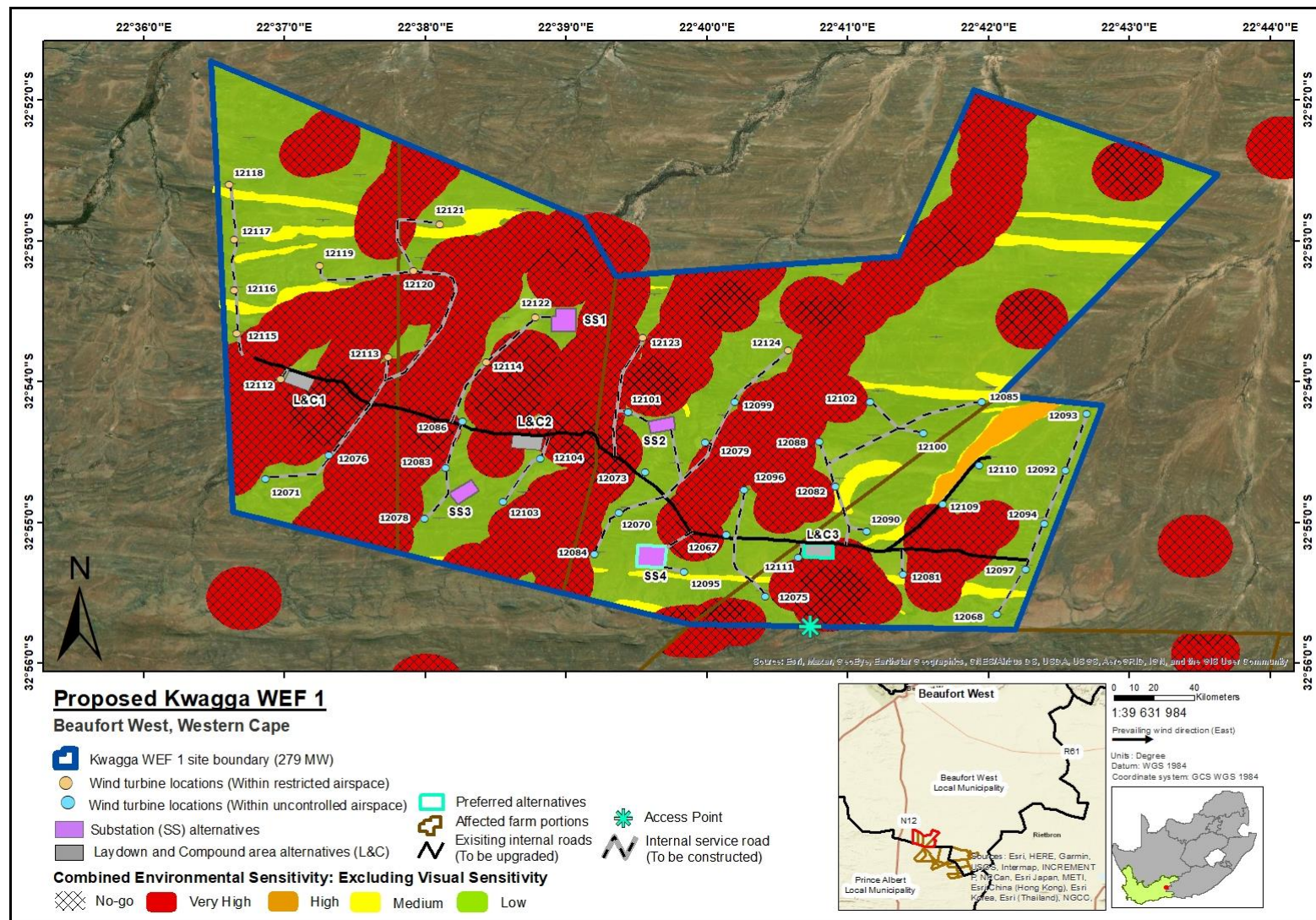


Figure H.7: Combined site layout and environmental sensitivity map excluding visual sensitivity for the proposed Kwagga WEF 1 project site.



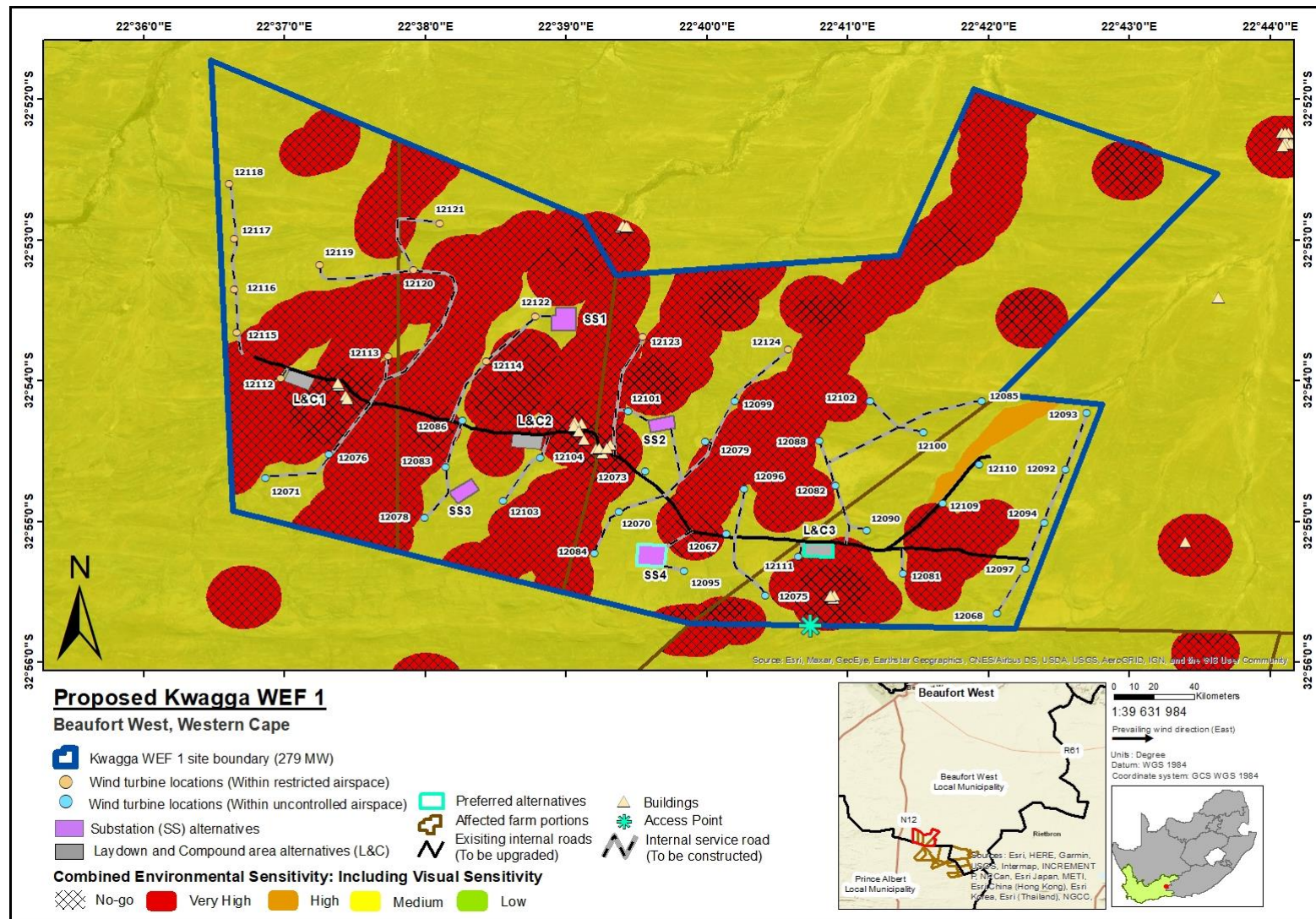


Figure H.8: Combined site layout and environmental sensitivity map including visual sensitivity for the proposed Kwagga WEF 1 project site.



## H. 2: Site Layout Plans

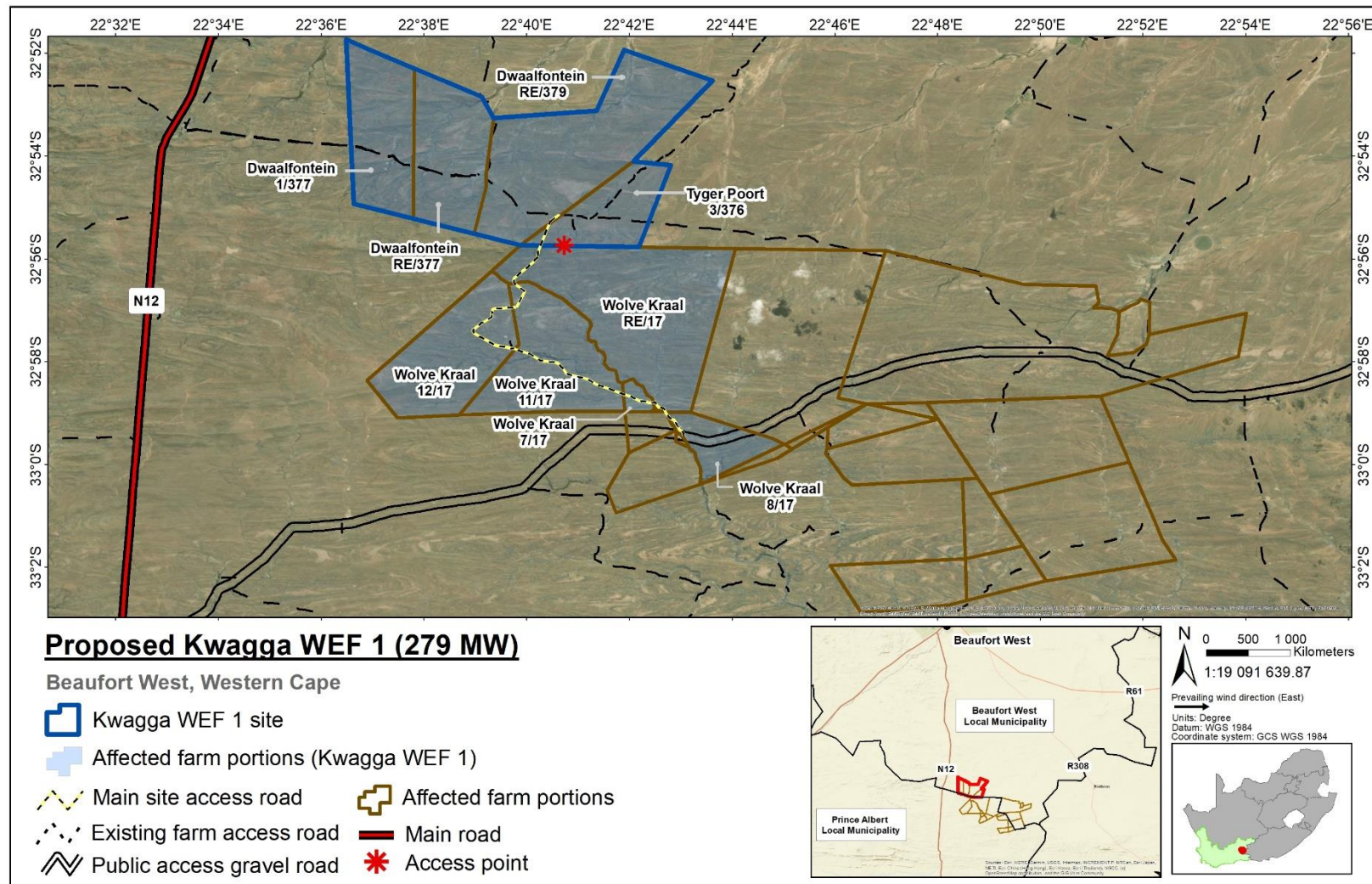


Figure H.9: Locality map for the proposed Kwagga WEF 1 project showing the main access road near Beaufort West in the Western Cape.

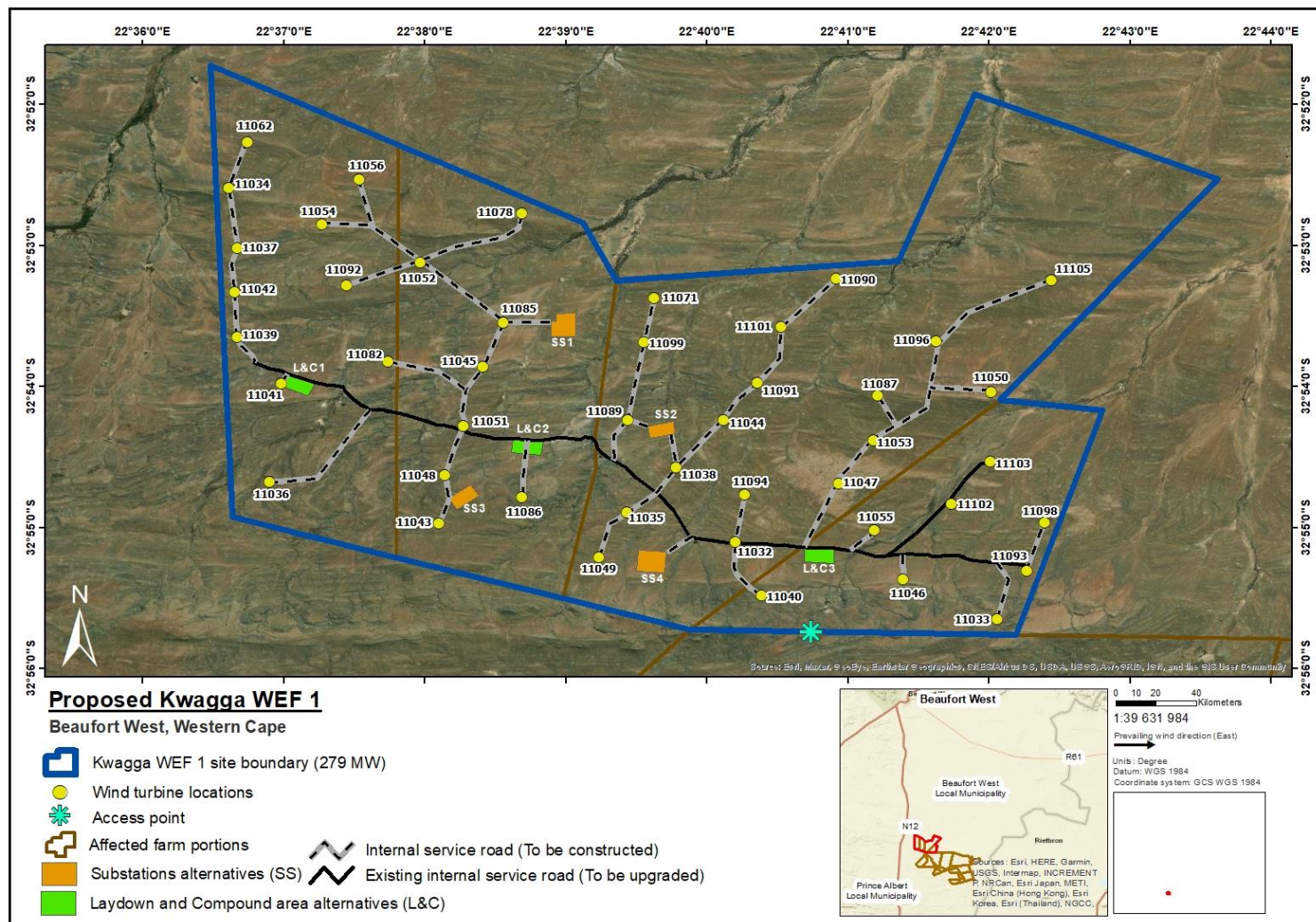


Figure H.10: Site layout plan for the proposed Kwagga WEF 1 illustrating the position of project components as revised following the outcome of the high-level specialist assessments done during the Scoping Phase. This revised site layout plan was subjected to detailed specialist assessment during the EIA Phase.



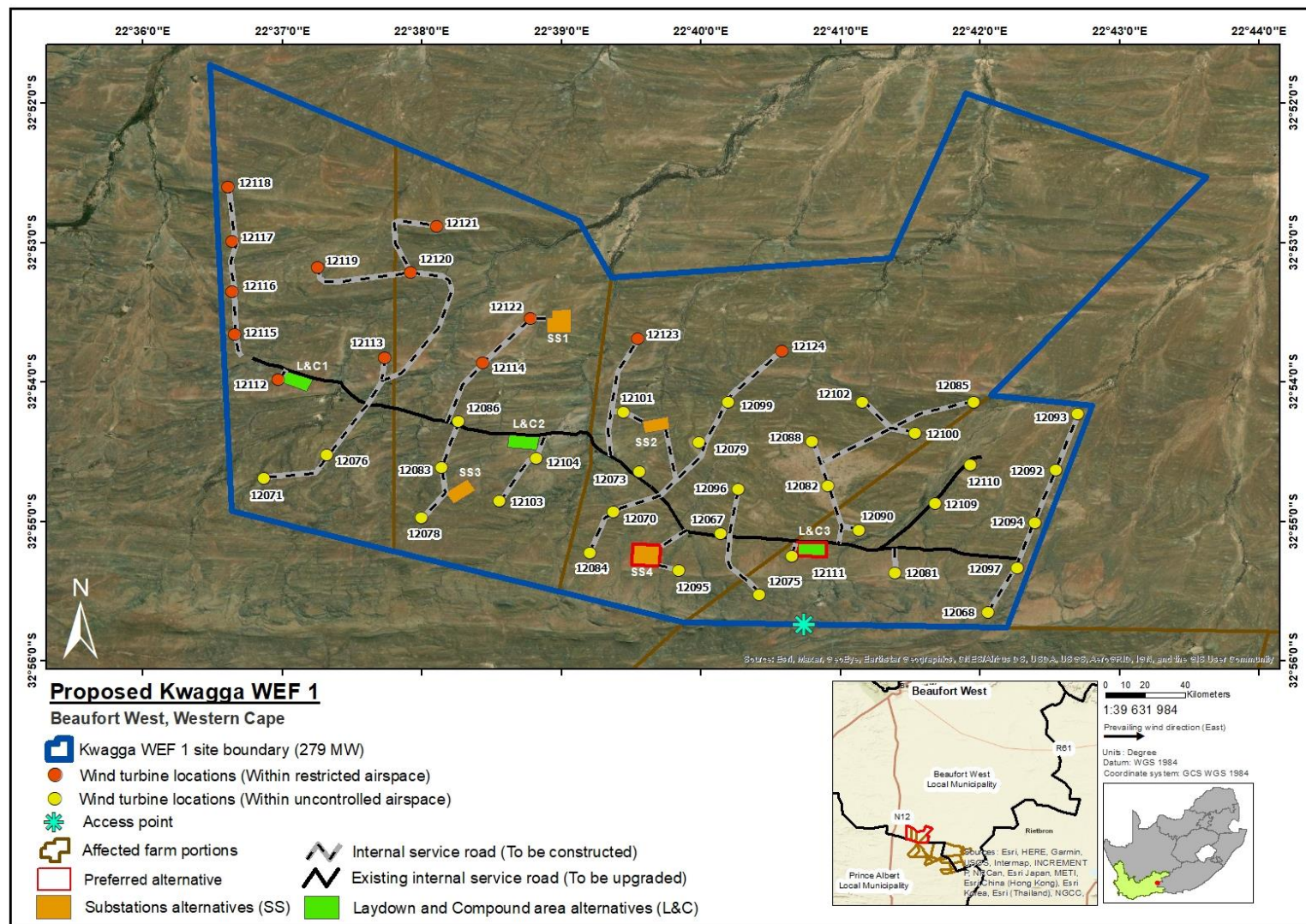


Figure H.11: The refined and confirmed site layout plan for the proposed Kwagga WEF 1 project following the outcome of the Aviation Operational Impact Assessment. Turbine positions (indicated in yellow) are located in 'dangerous and restricted airspace' and turbine positions (indicated in blue) are located in 'uncontrolled airspace'.