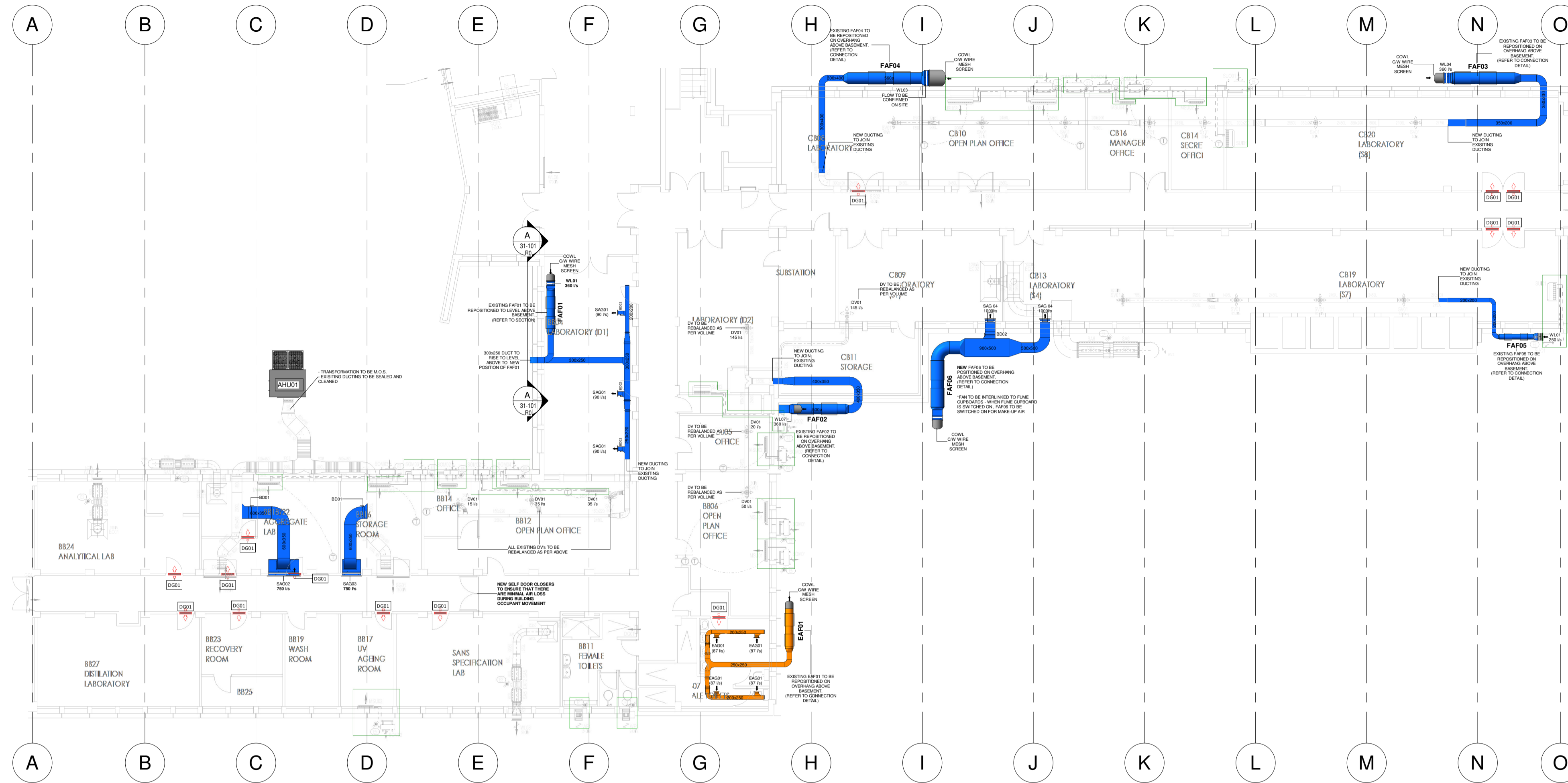
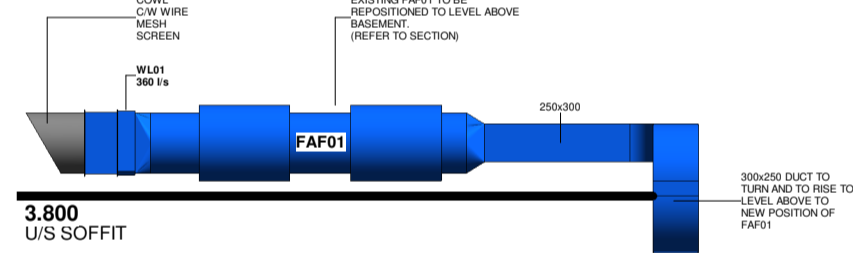


- LEGEND:**
- EXTRACT AIR DUCTING
  - SUPPLY AIR DUCTING
  - HVAC CABLE TRAY

- LEGEND:**
- SUPPLY AIR GRILLE (SAG)
  - DOOR GRILLE
  - DISC VALVE
  - BALANCING DAMPER
  - AXIAL FAN c/w ATTENUATOR
  - HYBRID TYPE AIR HANDLING UNIT



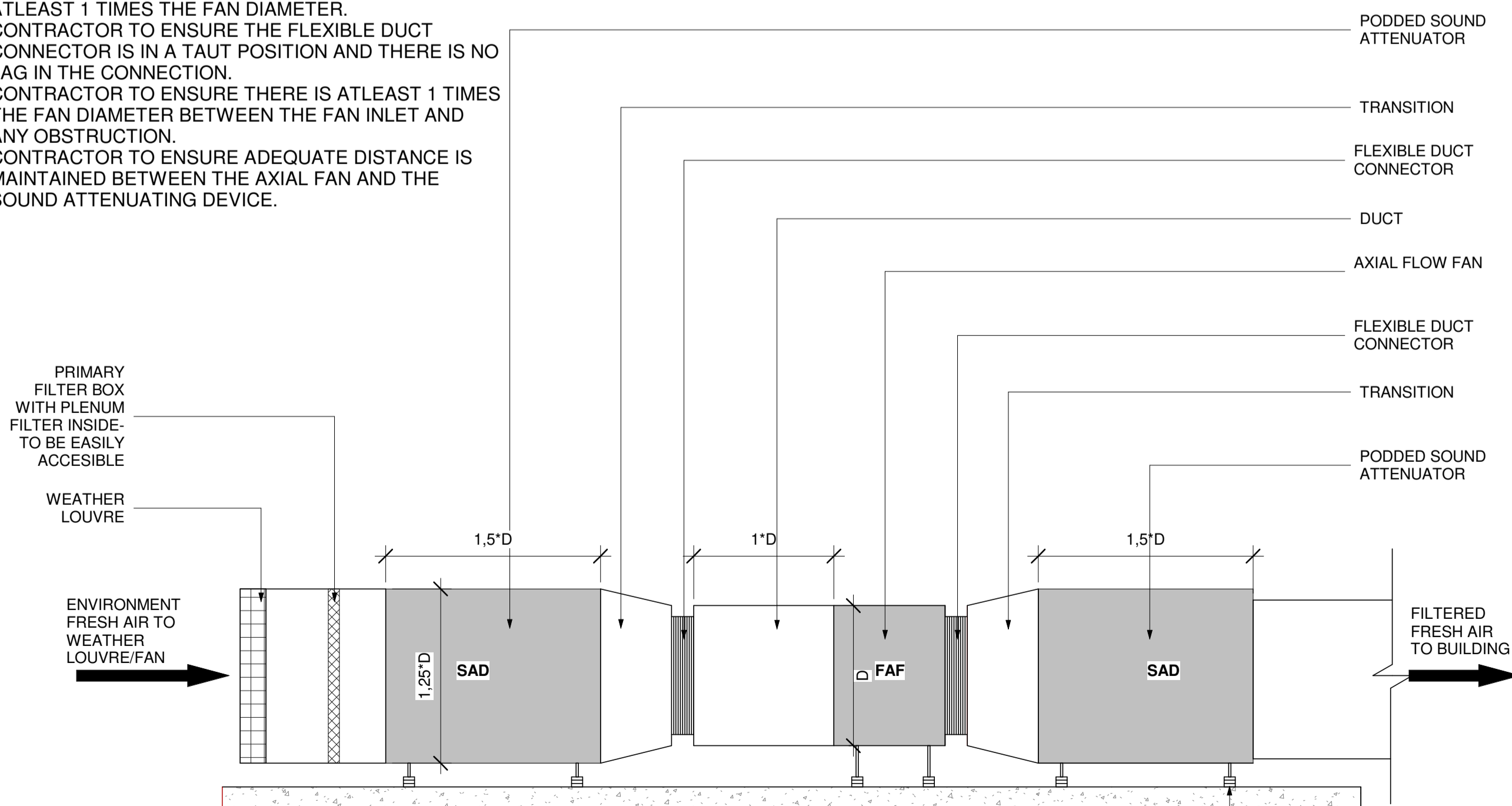
**1 BASEMENT**  
1 : 150



**NOTES FOR FAN CONNECTION:**

1. THE CONNECTION BETWEEN THE SOUND ATTENUATING DEVICE AND AXIAL FAN SHOULD BE COUPLED WITH A FLEXIBLE DUCT CONNECTOR.
2. ALL FLEXIBLE DUCT CONNECTORS BETWEEN THE INLET OF A FAN IS TO BE A MINIMUM LENGTH OF ATLEAST 1 TIMES THE FAN DIAMETER.
3. CONTRACTOR TO ENSURE THE FLEXIBLE DUCT CONNECTOR IS IN A TAUT POSITION AND THERE IS NO LAG IN THE CONNECTION.
4. CONTRACTOR TO ENSURE THERE IS ATLEAST 1 TIMES THE FAN DIAMETER BETWEEN THE FAN INLET AND ANY OBSTRUCTION.
5. CONTRACTOR TO ENSURE ADEQUATE DISTANCE IS MAINTAINED BETWEEN THE AXIAL FAN AND THE SOUND ATTENUATING DEVICE.

**A SECTION A-A**  
1 : 50



TYPICAL CONNECTION DETAIL FOR AXIAL FAN

New Fresh Air Fans								
Item No.	QTY	Description	Size Ø	Airflow (l/s)	Static Pressure (Pa)	Speed (RPM)	Motor Size (kW)	Accessories
FAF-06	1	AMS Axial Flow Fan c/w 2 of 1,5D Attenuators	1000	2000	250	1440	3	1.2 kW Interlink Switch to Fume Cupboard & Soft Start Control System

Air Handling Unit Schedule - New					
Item No.	QTY	Description	Cooling Capacity (kW)	Heating Capacity (kW)	Supply Air (l/s)
AHU01	1	Air Handling Unit	38.0 kW	54.0 kW	3000 l/s

Indoor Split Unit Schedule - Existing Units					
Item No.	QTY	Description	Capacity (kW)	Power	Remarks
MSU01	3	Midwall AC Unit	5.1 kW	230V/ 1PH /50Hz	To be serviced and recommissioned as per specification document
MSU02	4	Midwall AC Unit	2.6 kW	230V/ 1PH /50Hz	To be serviced and recommissioned as per specification document
MSU03	4	Midwall AC Unit	7.0 kW	230V/ 1PH /50Hz	To be serviced and recommissioned as per specification document
MSU04	2	Midwall AC Unit	3.5 kW	230V/ 1PH /50Hz	To be serviced and recommissioned as per specification document
SUI01	2	Under Ceiling Unit	16.0 kW	230V/ 1PH /50Hz	To be serviced and recommissioned as per specification document
SUI02	1	Under Ceiling Unit	10.0 kW	230V/ 1PH /50Hz	To be serviced and recommissioned as per specification document

Outdoor Condensing Unit Schedule - Existing Units					
Item No.	QTY	Description	Capacity (kW)	Power	Remarks
SOM01	3	Midwall AC Unit	5.1 kW	230V/ 1PH /50Hz	To be serviced and recommissioned as per specification document
SOM02	4	Midwall AC Unit	2.6 kW	230V/ 1PH /50Hz	To be serviced and recommissioned as per specification document
SOM03	4	Midwall AC Unit	7.0 kW	230V/ 1PH /50Hz	To be serviced and recommissioned as per specification document
SOM04	2	Midwall AC Unit	3.5 kW	230V/ 1PH /50Hz	To be serviced and recommissioned as per specification document
SUO01	2	Under Ceiling Unit	16.0 kW	230V/ 1PH /50Hz	To be serviced and recommissioned as per specification document
SUO02	1	Under Ceiling Unit	10.0 kW	230V/ 1PH /50Hz	To be serviced and recommissioned as per specification document

New Door Grilles				
Item No.	QTY	Description	Size LxH	Colour
DG01	14	TROX Type AGS-T Door Grille	600 x 300	TBC

New Supply Air Grilles				
Item No.	QTY	Description	Size LxH / Ø	Colour
SAG01	3	TROX Type AT Supply Air Grille	200 x 200	TBC
SAG02	1	Double Deflection Supply Air Grille	1500 x 300	TBC
SAG03	1	Double Deflection Supply Air Grille	900 x 300	TBC
SAG04	2	TROX Type AT Supply Air Grille	500 x 500	TBC

New Extract Air Grilles				
Item No.	QTY	Description	Size LxH / Ø	Colour
EAG01	4	TROX Type AT Extract Air Grille	200 x 200	TBC

Services to be Executed on Existing Fresh Air Fans												
Name	QTY	Location	Size Ø	Airflow (l/s)	Static Pressure (Pa)	Move Fan	Balance	New Filters & WL	New Dirt Filter Indicators	Annual Timer	Soft Start Control System	Flexible Collars
FAF-01	1	LAB BB04	315	TBC	TBC	YES	YES	YES	YES	YES	YES	YES
FAF-02	1	LAB CB11	500	TBC	TBC	YES	YES	YES	YES	YES	YES	YES
FAF-03	1	LAB CB20	560	TBC	TBC	YES	YES	YES	YES	YES	YES	YES
FAF-04	1	LAB CB08	560	TBC	TBC	YES	YES	YES	YES	YES	YES	YES
FAF-05	1	LAB CB19	250	TBC	TBC	YES	YES	YES	YES	YES	YES	YES

Services to be Executed on Existing Fresh Air Fans											
Name	QTY	Location	Size Ø	Airflow (l/s)	Static Pressure (Pa)	Move Fan	Balance	New WL	Annual Timer	Soft Start Control System	Flexible Collars
EAF-01	1	Room BB07	315	TBC	TBC	YES	YES	YES	YES	YES	YES
WF01	2	Room BB11	300 x 300	TBC	TBC	NO	YES	NO	YES	NO	NO

**FOR TENDER**

<p>REV. DATE DESCRIPTION</p> <p>R0 05/08/21 ISSUED FOR TENDER</p>				<p>DRG. SIZE: A1</p> <p>SCALE: 1:150</p>		<p>PROJECT: CSIR SMART MOBILITY CLUSTER BUILDING 2</p> <p>TITLE: BUILDING 2 - BASEMENT AREA-HVAC LAYOUT</p>	
<p>DRW. DSC. APPR. WS WS KDP</p> <p>DESIGNED: KDP</p> <p>APPROVED: KDP</p> <p>DATE: 05/08/21</p> <p>SHEET: 1 OF 1</p> <p>COPYRIGHT RESERVED</p>				<p>PLANTECH</p> <p>ELECTRICAL AND MECHANICAL CONSULTING ENGINEERS P.O. BOX 146 PERSEQUOY PARK 0020 TEL: (012) 349-2253</p>		<p>DWG. No.: A2167-31-02-101</p> <p>RO</p>	

**1. GENERAL NOTES:**

- 1.1. THIS DRAWING FORMS PART OF THE SPECIFICATION AND MUST BE READ IN CONJUNCTION WITH THE SAME.
- 1.2. ALL DUCTWORK TO BE MANUFACTURED IN ACCORDANCE WITH SANS-1238-2005 & SANS-10173-2003. LOW VELOCITY DUCT STANDARDS.
- 1.3. ALL DUCT SIZES SHOWN ARE ACTUAL SWEETMEAT SIZES.
- 1.4. ALL SUPPLY & RETURN DUCTS TO BE EXTERNALLY INSULATED WITH 25mm FRK INSULATION. UNLESS OTHERWISE SPECIFIED.
- 1.5. ALL VENTILATION DUCTS TO BE UNINSULATED UNLESS SPECIFIED.
- 1.6. ALL EXPOSED DUCTS TO BE PAINTED TO SPECIFICATIONS.
- 1.7. ALL BENDS TO HAVE MINIMUM INTERNAL RADIUS 150mm, AND SPLITTERS UNLESS OTHERWISE SPECIFIED.
- 1.8. ALL ROUND DUCT BENDS UP TO Ø500mm - RADIUS 200mm AND OVER Ø500mm - RADIUS 300mm.
- 1.9. ALL DUCT SHOES TO BE 150mm LONG @ 45°.
- 1.10. ALL SPIGOTS TO BE 100mm LONG, UNLESS OTHERWISE STATED.
- 1.11. REFRIGERANT PIPING TO BE COPPER AND INSULATED.
- 1.12. ALL REFRIGERANT PIPING TO BE NEATLY ROUTED AND INSTALLED ON GALVANIZED CABLE TRAYS, UNLESS OTHERWISE SPECIFIED.
- 1.13. ALL DRAINS TO BE Ø32mm RIGID PVC WITH A 1:100 MINIMUM FALL.
- 1.14. ALL SMOKE EXTRACT DUCTING TO BE 1mm MINIMUM THICKNESS.
- 1.15. ALL DUCTING ENTERING THE BUILDING WILL BE LEVELLED IN SUCH A WAY THAT THE DUCTING SLOPES AWAY FROM THE BUILDING AT A FALL OF 1:100.
- 1.16. ALL MECHANICAL EQUIPMENT AND DUCTING THAT ARE HALFTONED (GREY) ARE EXISTING EQUIPMENT - DESIGNED BY PREVIOUS CONSULTANTS.
- 1.17. NEW DUCTING TO BE JOINED TO EXISTING DUCTING AND SEALED TIGHT.
- 1.18. ALL SPLIT TYPE MIDWALL AND UNDERCELLING UNITS TO BE SERVICED AND RECOMMISSIONED AS PER SPECIFICATION DOCUMENT

**2. BUILDERSWORK NOTES:**

- 2.1. ALL OPENINGS TO BE 100mm BIGGER THAN DUCT SIZES SHOWN AND TO BE MADE GOOD AFTER DUCTING HAS BEEN INSTALLED - BY BUILDER.
- 2.2. ALL OPENINGS TO BE 50mm BIGGER THAN GRILLE SIZES WHICH INCLUDES A 20mm THICK TIMBER FRAME ALL ROUND OPENING - BY BUILDER.
- 2.3. SLEEVES IN WALLS, IN SLABS AND BEAMS FOR REFRIGERANT PIPES AND DRAINS TO BE MADE GOOD AFTER SERVICES HAVE BEEN INSTALLED - BY BUILDER.
- 2.4. ALL PLANTROOMS TO HAVE FLOOR DRAIN AND WATER POINT.