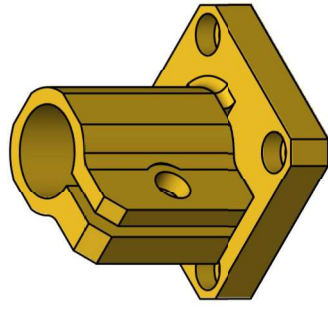
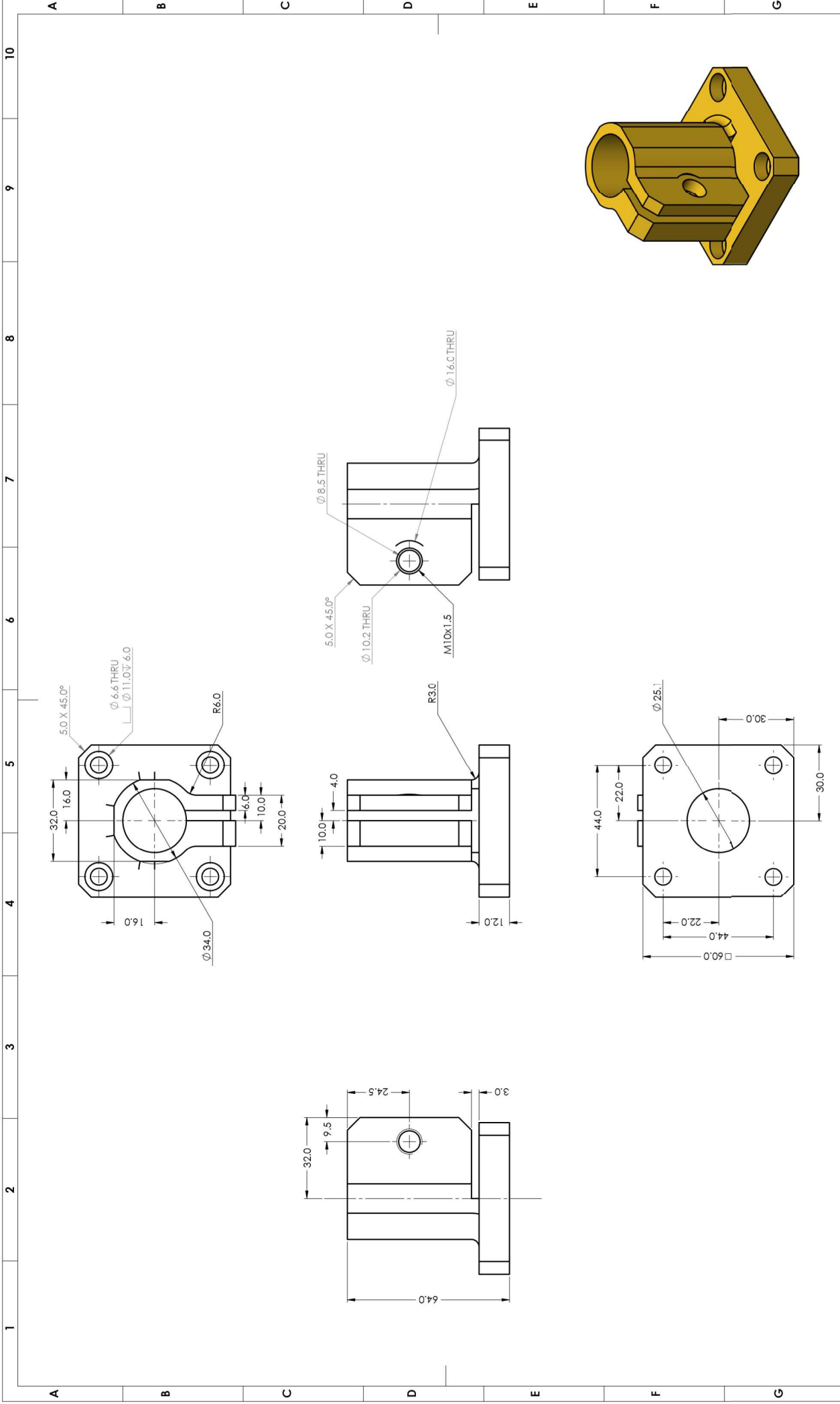
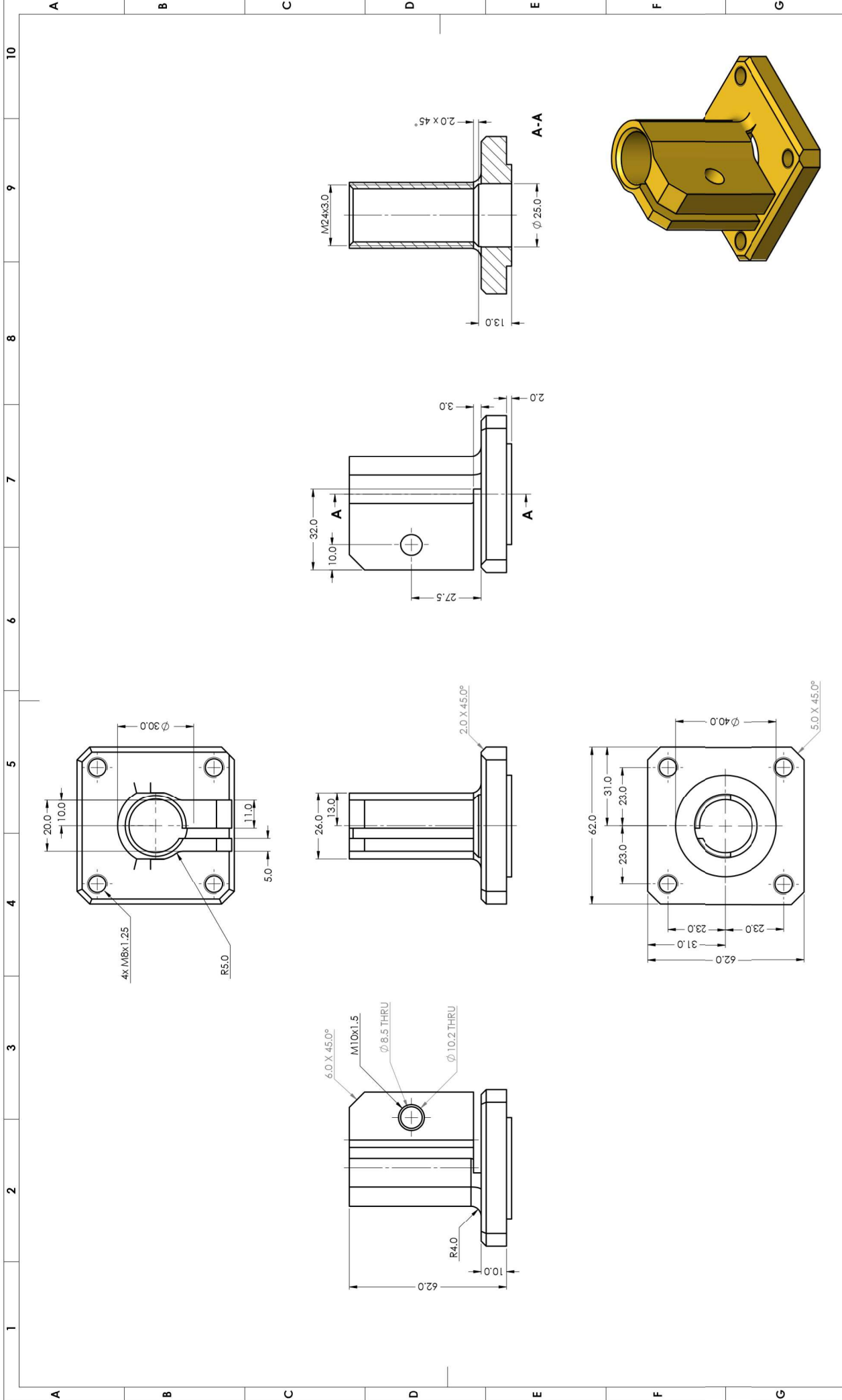


ANNEXURE G: DRAWINGS

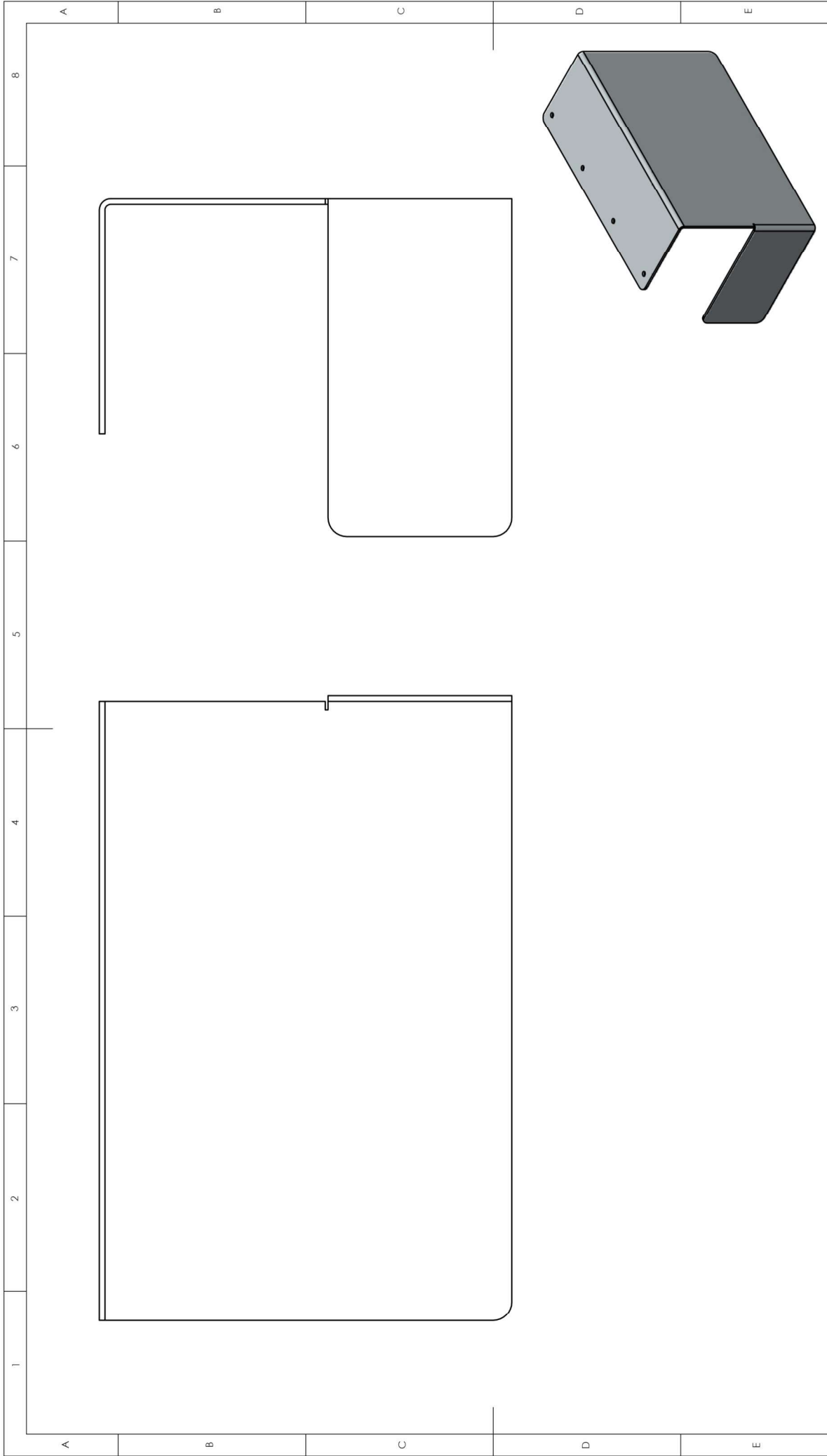


TOLERANCES UNLESS OTHERWISE SPECIFIED		DATE		DRAWN		CHECKED		APPROVED		DO NOT SCALE DRAWING		3 RD ANGLE PROJECTION		TITLE:		QUANTITY			
LINEAR: TWO DECIMALS - ± 0.05 mm ONE DECIMAL - ± 0.1 mm NO DECIMAL - ± 0.5 mm		2023-07-01		C vd Westhuizen						DEBUR AND REMOVE SHARP EDGES		MATERIAL: Brass		Castor rod clamp		4			
ANGULAR: $\pm 0.5^\circ$										SURFACE FINISH 1.4 μm SHEET 1 OF 1		TREATMENT:		PART NO:		CSIR Teaching Area through Innovation			
		ASK WHEN IN DOUBT								DRAWING STANDARD: BS 8888: 2002		DIMENSIONS IN MILLIMETRES		COPYRIGHT RESERVED		SCALE: 1:1			
																REVISION: 01		TEL: (012) 841 3067	

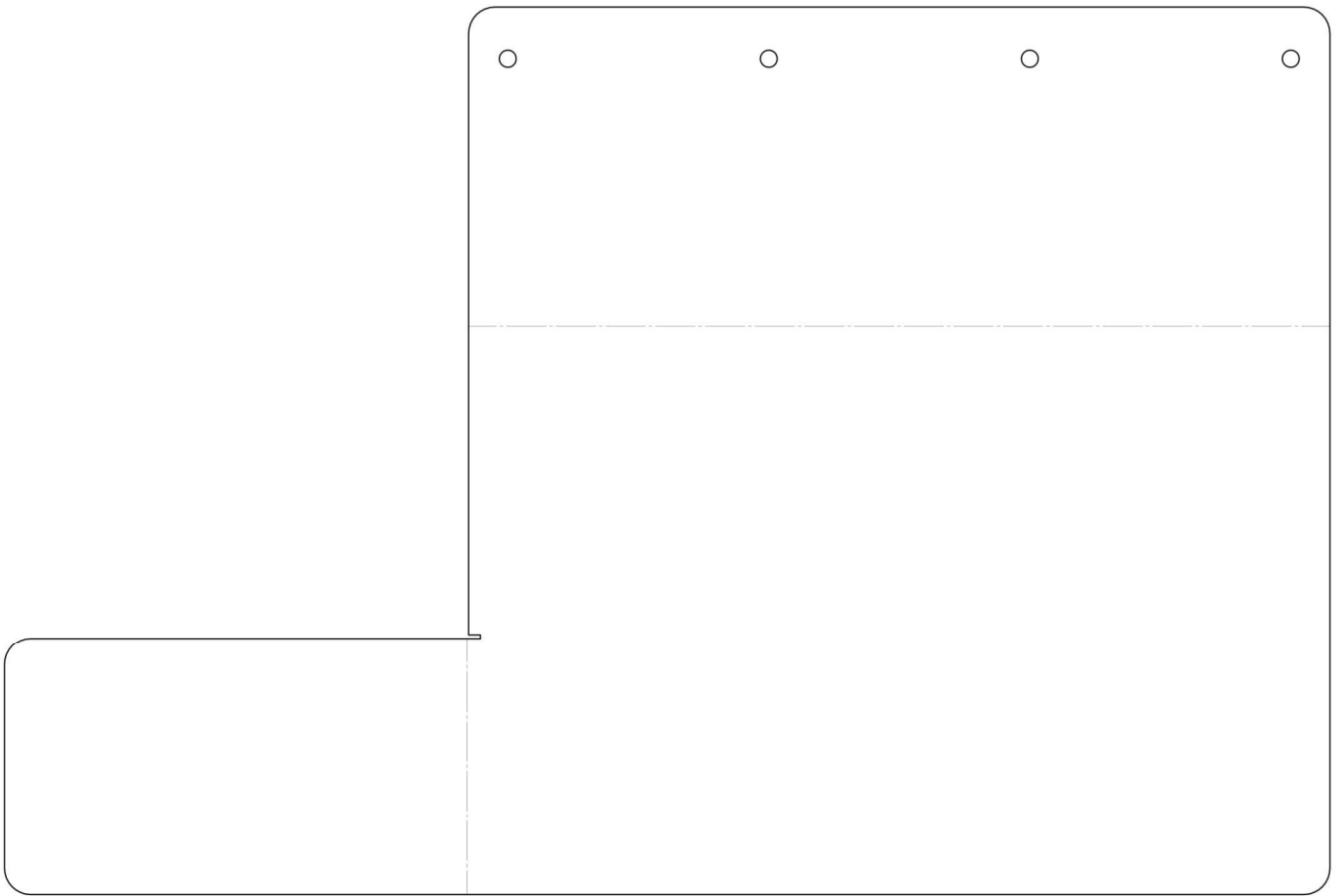


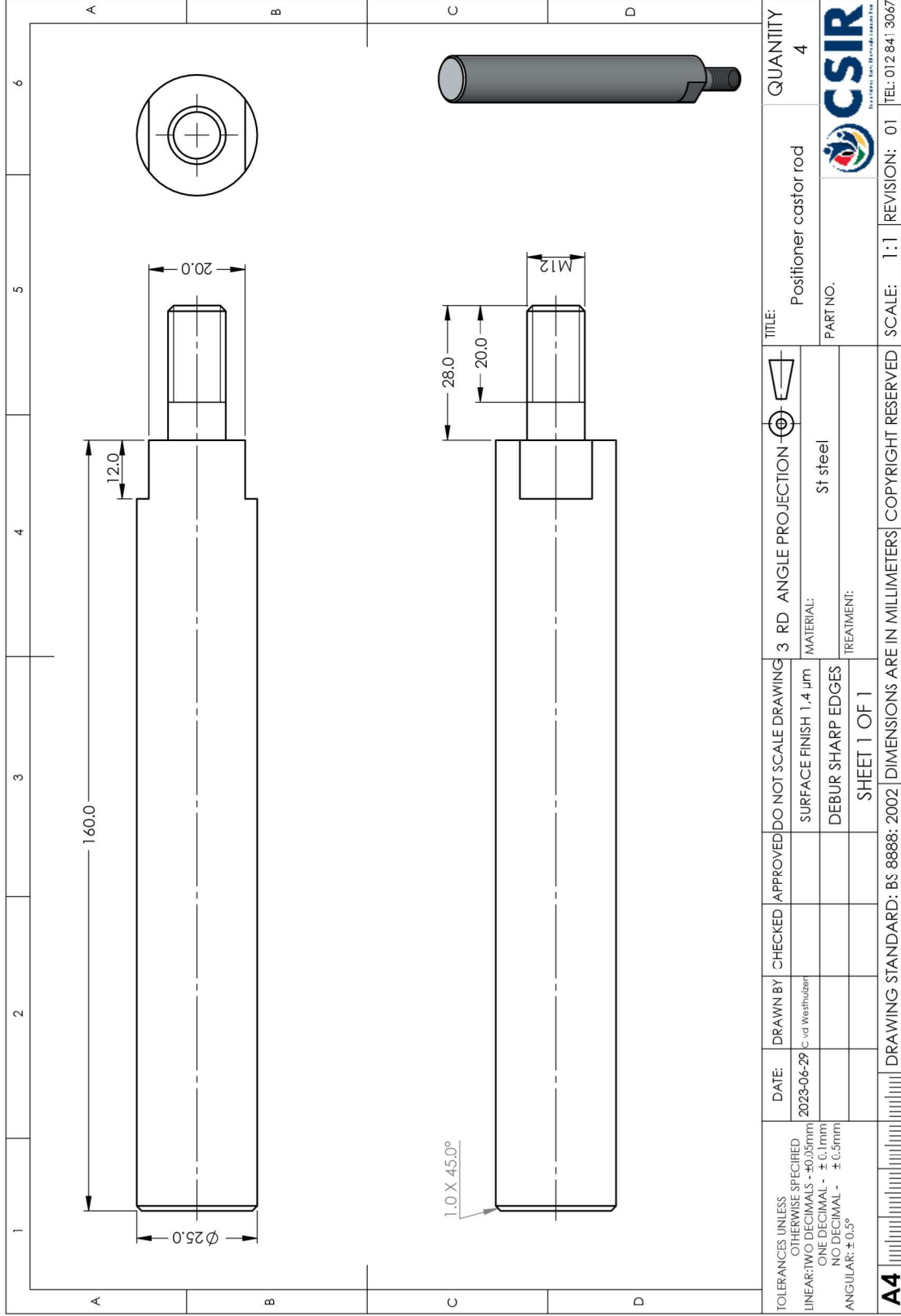
TOLERANCES UNLESS OTHERWISE SPECIFIED LINEAR: TWO DECIMALS - ± 0.05 mm ONE DECIMAL - ± 0.1 mm NO DECIMAL - ± 0.5 mm ANGULAR: ± 0.5°		DATE 2023-07-03	DRAWN C vd Westhuizen	CHECKED	APPROVED	DO NOT SCALE DRAWING	3 RD ANGLE PROJECTION	TITLE: Castor stud clamp	QUANTITY 4
						DEBUR AND REMOVE SHARP EDGES	MATERIAL: Brass	PART NO:	
						SURFACE FINISH 1.4 µm	TREATMENT:		
						SHEET 1 OF 1			
ASK WHEN IN DOUBT		DRAWING STANDARD: BS 8888: 2002			DIMENSIONS IN MILLIMETRES			SCALE: 1:1	REVISION: 01



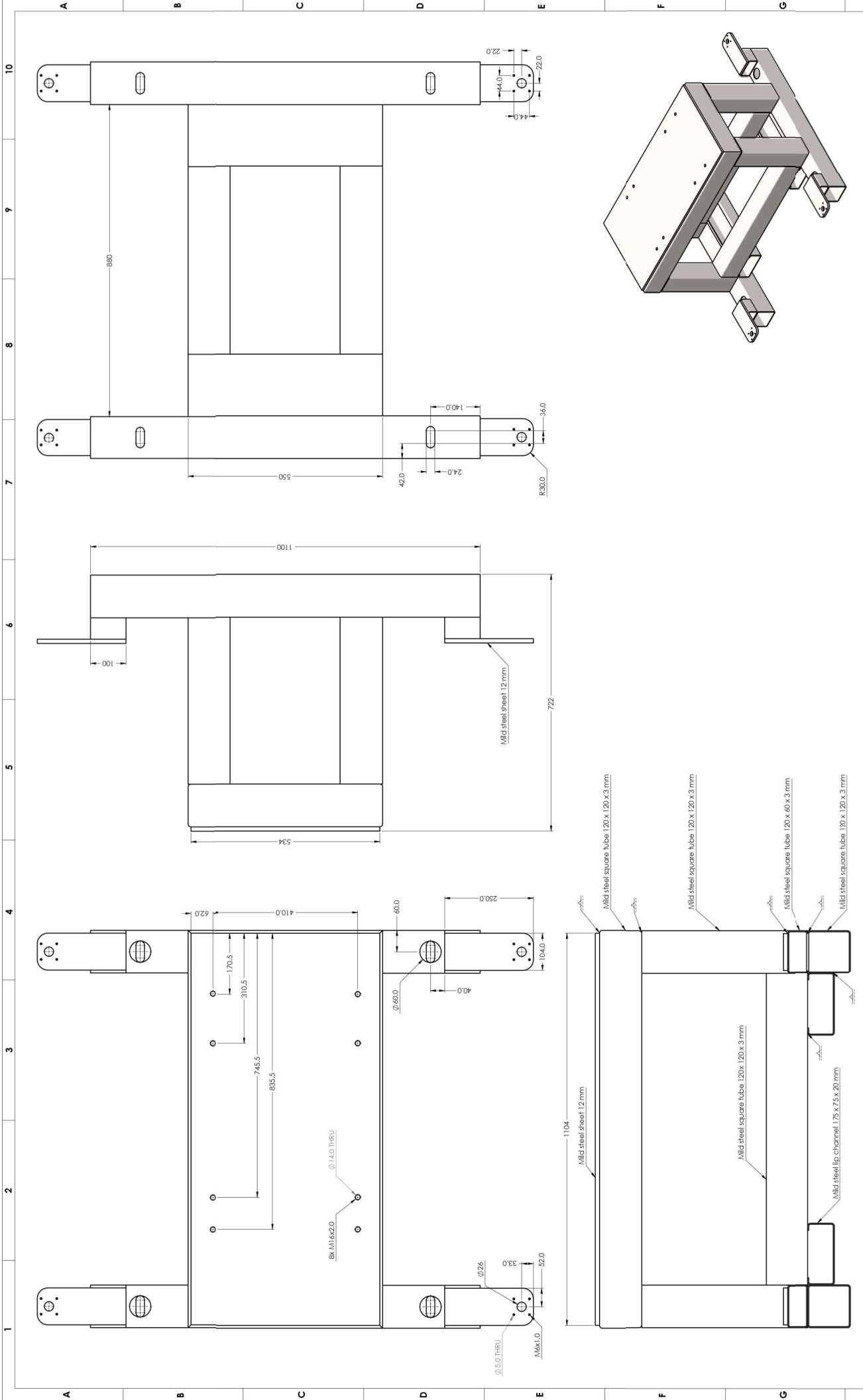


<p>UNLESS OTHERWISE SPECIFIED</p> <p>LINEAR: TWO DECIMALS - 0.05 mm ONE DECIMAL - ± 0.1 mm NO DECIMAL - ± 0.5 mm</p> <p>ANGULAR: ± 0.5°</p> <p>SURFACE FINISH: μ 1.4</p> <p>DEBUR AND BREAK SHARP EDGES</p>		<p>DO NOT SCALE DRAWING</p> <p>DATE: 202-06-09</p> <p>DRAWN BY: C vd Westhuizen</p>		<p>SHEET 1 OF 1</p> <p>CHECKED</p>		<p>3 RD ANGLE PROJECTION</p> <p>APPROVED</p>		<p>3 RD ANGLE PROJECTION</p> <p>MATERIAL: Mild steel sheet 3 mm</p> <p>TREATMENT:</p>		<p>QUANTITY</p> <p>4</p>	
<p>TOLERANCES:</p>		<p>DATE:</p>		<p>CHECKED:</p>		<p>APPROVED:</p>		<p>TITLE:</p> <p>Pallet protection cover</p>		<p>DWG NO.</p>	
<p>SURFACE FINISH:</p>		<p>DRAWN BY:</p>		<p>CHECKED:</p>		<p>APPROVED:</p>		<p>CSIR</p> <p>Touching lives through innovation</p>		<p>REVISION</p> <p>01</p>	
<p>DEBUR AND BREAK SHARP EDGES</p>		<p>C vd Westhuizen</p>		<p>CHECKED:</p>		<p>APPROVED:</p>		<p>SCALE:</p> <p>1:2</p>		<p>TEL: (012) 841 3067</p>	
<p>A3</p>		<p>DRAWING STANDARD: BS 8888: 2002</p>		<p>DIMENSIONS ARE IN MILLIMETERS</p>		<p>COPYRIGHT RESERVED</p>		<p>SCALE:</p> <p>1:2</p>		<p>REVISION</p> <p>01</p>	





TOLERANCES UNLESS OTHERWISE SPECIFIED LINEAR: TWO DECIMALS - $\pm 0.05\text{mm}$ ONE DECIMAL - $\pm 0.1\text{mm}$ NO DECIMAL - $\pm 0.5\text{mm}$ ANGULAR: $\pm 0.5^\circ$	DATE:	2023-06-29	DRAWN BY:	C. vd Westhuizer	CHECKED:	APPROVED:	DO NOT SCALE DRAWING	3 RD ANGLE PROJECTION	3 RD ANGLE PROJECTION	QUANTITY:	4
							SURFACE FINISH 1,4 μm	MATERIAL:	St steel	TITLE:	Positioner castor rod
							DEBUR SHARP EDGES	TREATMENT:		PART NO.:	
							SHEET 1 OF 1				
DRAWING STANDARD: BS 8888: 2002 DIMENSIONS ARE IN MILLIMETERS COPYRIGHT RESERVED											
A4  CSIR CENTRE FOR SCIENTIFIC RESEARCH SCALE: 1:1 REVISION: 01 TEL: 012 841 3067											

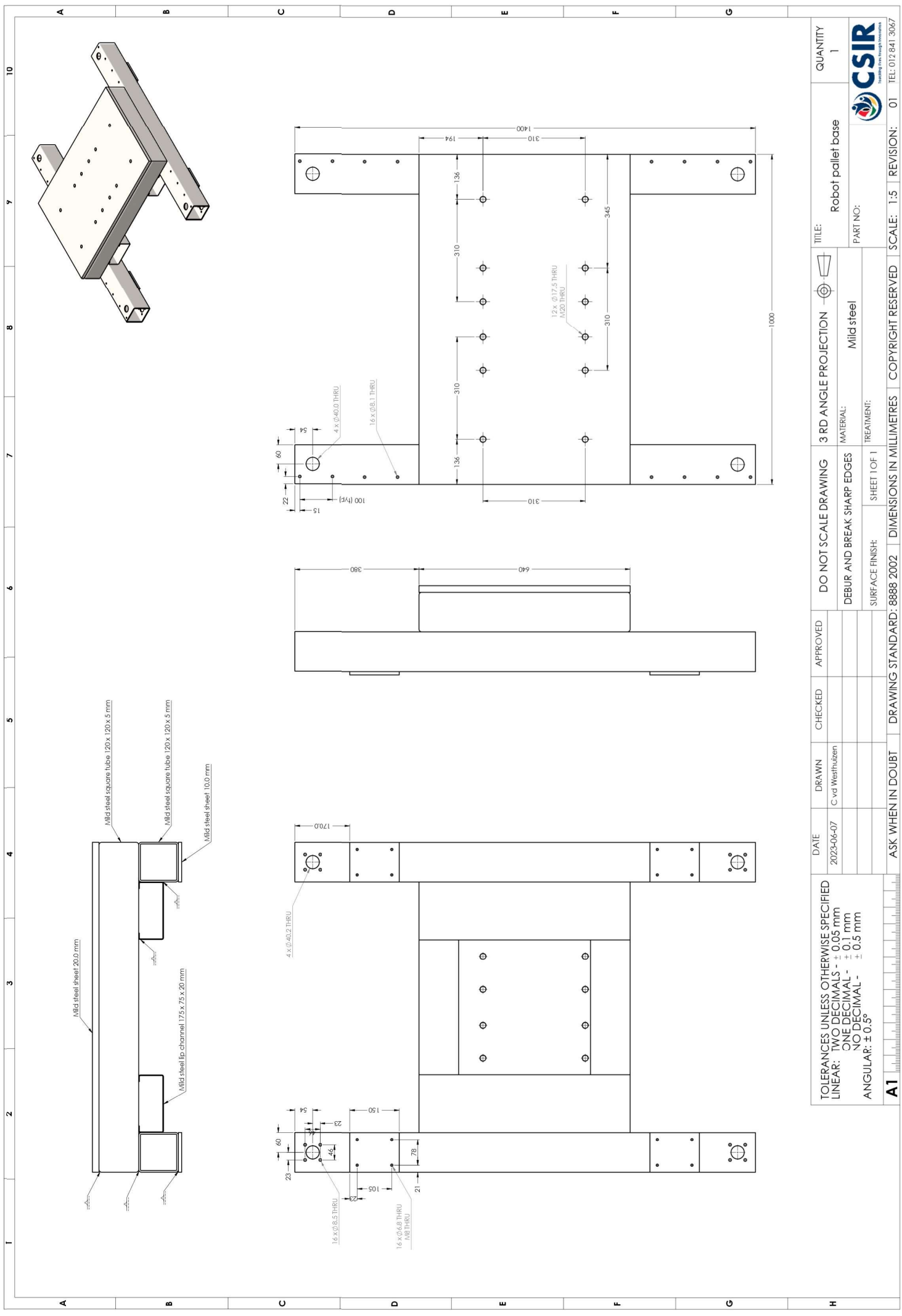


DATE	DRAWN	CHECKED	APPROVED	DO NOT SCALE DRAWING	3 RD ANGLE PROJECTION	TITLE:	QUANTITY
2023-06-28	C vd Westhuizen			DEBUR AND BREAK SHARP EDGES	Mild steel	Positioner pallet base	1
				SURFACE FINISH: 1.4 µm	TREATMENT:	PART NO:	
				SHEET 1 OF 1			
				DRAWING STANDARD: 8888 2002	DIMENSIONS IN MILLIMETRES	COPYRIGHT RESERVED	SCALE: 1:5
				ASK WHEN IN DOUBT		REVISION:	01
						TEL: 012 841 3067	



TOLERANCES UNLESS OTHERWISE SPECIFIED
 LINEAR: TWO DECIMALS - ± 0.05 mm
 ONE DECIMAL - ± 0.1 mm
 NO DECIMAL - ± 0.5 mm
 ANGULAR: ± 0.5°

A1



DATE 2023-06-07				DRAWN C.v.d Westhuizen		CHECKED		APPROVED		DO NOT SCALE DRAWING		3 RD ANGLE PROJECTION		TITLE: Robot pallet base		QUANTITY 1	
TOLERANCES UNLESS OTHERWISE SPECIFIED LINEAR: TWO DECIMALS ± 0.05 mm ONE DECIMAL ± 0.1 mm NO DECIMAL ± 0.5 mm ANGULAR: ± 0.5°				DEBUR AND BREAK SHARP EDGES		MATERIAL: Mild steel		TREATMENT: Mild steel		PART NO:		REVISION: 01		SCALE: 1:5		DRAWING STANDARD: 8888 2002	
ASK WHEN IN DOUBT				DRAWING STANDARD: 8888 2002		DIMENSIONS IN MILLIMETRES		COPYRIGHT RESERVED		SHEET 1 OF 1		SURFACE FINISH:		MATERIAL:		TREATMENT:	

