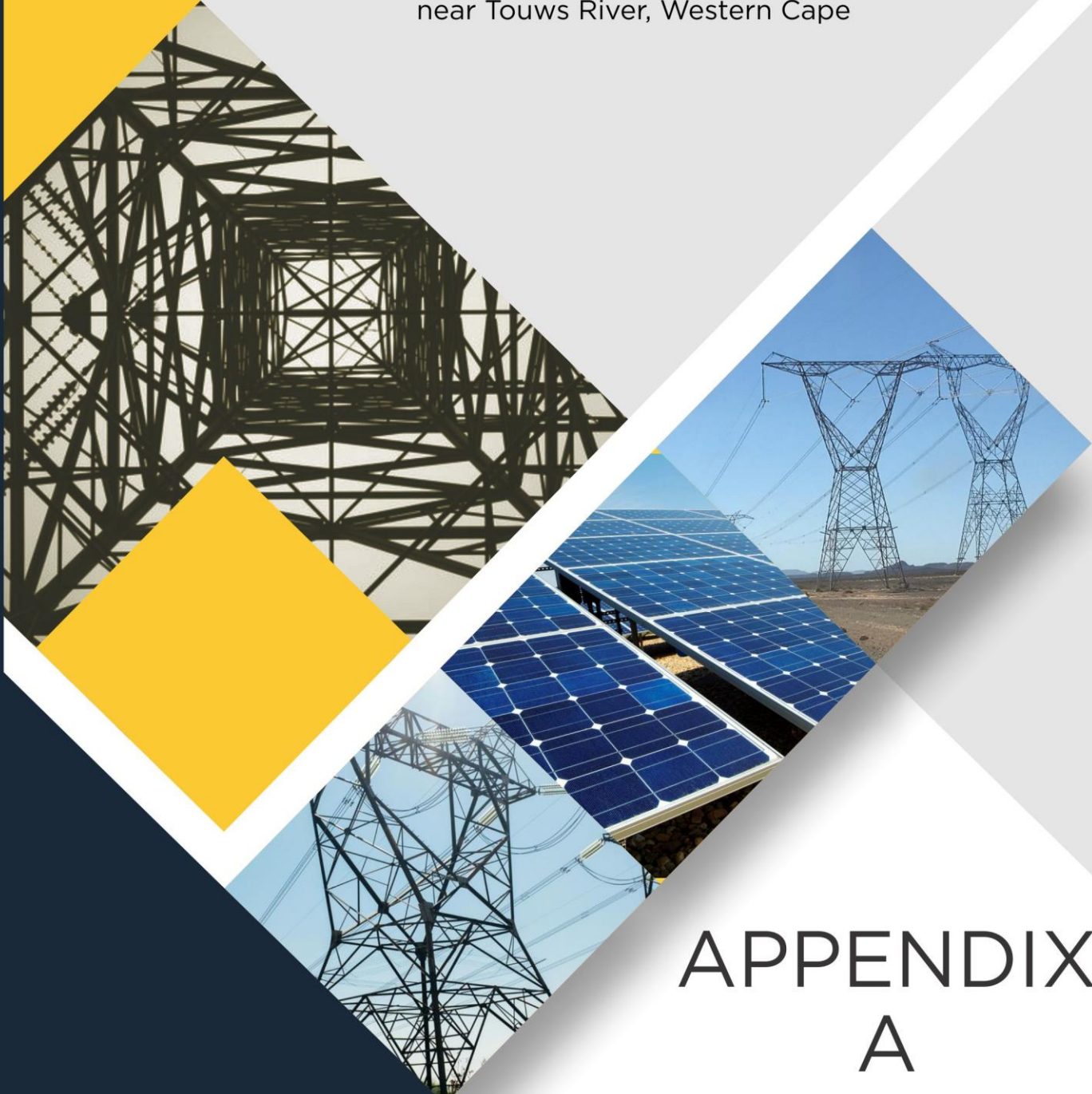


Basic Assessment for the Proposed Development of Electrical Grid Infrastructure to support the proposed nine 175 MW Solar Photovoltaic Facilities and associated Infrastructure (i.e. Witte Wall PV 1, Witte Wall PV 2, Grootfontein PV 1, Grootfontein PV 2, Grootfontein PV 3, Hoek Doornen PV 1, Hoek Doornen PV 2, Hoek Doornen PV 3, and Hoek Doornen PV 4), near Touws River, Western Cape

# APPENDICES

Appendix A:	Maps
Appendix B:	Facility Illustrations
Appendix C:	Specialist Reports
Appendix C.1:	Agriculture Compliance Statements
Appendix C.1.1:	Agriculture Compliance Statement for Witte Wall
Appendix C.1.2:	Agriculture Compliance Statement for Grootfontein
Appendix C.1.3:	Agriculture Compliance Statement for Hoek Doornen
Appendix C.2:	Visual Impact Assessment
Appendix C.2.1:	Visual Impact Assessment for Witte Wall
Appendix C.2.2:	Visual Impact Assessment for Grootfontein
Appendix C.2.3:	Visual Impact Assessment for Hoek Doornen
Appendix C.3:	Heritage Impact Assessment (Archaeology, Cultural Landscape and Palaeontology)
Appendix C.3.1:	Heritage Impact Assessment (Archaeology, Cultural Landscape and Palaeontology) for Witte Wall
Appendix C.3.2:	Heritage Impact Assessment (Archaeology, Cultural Landscape and Palaeontology) for Grootfontein
Appendix C.3.3:	Heritage Impact Assessment (Archaeology, Cultural Landscape and Palaeontology) for Hoek Doornen
Appendix C.4:	Terrestrial Biodiversity and Species
Appendix C.4.1:	Terrestrial Biodiversity and Species for Witte Wall
Appendix C.4.2:	Terrestrial Biodiversity and Species for Grootfontein
Appendix C.4.3:	Terrestrial Biodiversity and Species for Hoek Doornen
Appendix C.5:	Aquatic Biodiversity and Species
Appendix C.5.1:	Aquatic Biodiversity and Species for Witte Wall
Appendix C.5.2:	Aquatic Biodiversity and Species for Grootfontein
Appendix C.5.3:	Aquatic Biodiversity and Species for Hoek Doornen
Appendix C.6:	Avifauna Assessment
Appendix C.6.1:	Avifauna Assessment for Witte Wall
Appendix C.6.2:	Avifauna Assessment for Grootfontein
Appendix C.6.3:	Avifauna Assessment for Hoek Doornen
Appendix C.7:	Socio-Economic Assessment
Appendix C.7.1:	Socio-Economic Assessment for Witte Wall
Appendix C.7.2:	Socio-Economic Assessment for Grootfontein
Appendix C.7.3:	Socio-Economic Assessment for Hoek Doornen
Appendix C.8:	Geohydrology Assessment
Appendix C.8.1:	Geohydrology Assessment for Witte Wall
Appendix C.8.2:	Geohydrology Assessment for Grootfontein
Appendix C.8.3:	Geohydrology Assessment for Hoek Doornen
Appendix C.9:	Civil Aviation Site Sensitivity Verification
Appendix D:	Public Participation
Appendix E:	EAP Details, Expertise and Declaration of Interest
Appendix F:	Specialist Declarations of Interest
Appendix G:	Environmental Management Programme (EMPr) for the Power Lines
Appendix H:	Environmental Management Programme (EMPr) for the On-Site Substations
Appendix I:	Pre-Consultation with the Competent Authority
Appendix J:	Additional Information

Basic Assessment for the Proposed Development of Electrical Grid Infrastructure to support the proposed nine 175 MW Solar Photovoltaic Facilities and associated Infrastructure (i.e. Witte Wall PV 1, Witte Wall PV 2, Grootfontein PV 1, Grootfontein PV 2, Grootfontein PV 3, Hoek Doornen PV 1, Hoek Doornen PV 2, Hoek Doornen PV 3, and Hoek Doornen PV 4), near Touws River, Western Cape



# APPENDIX A

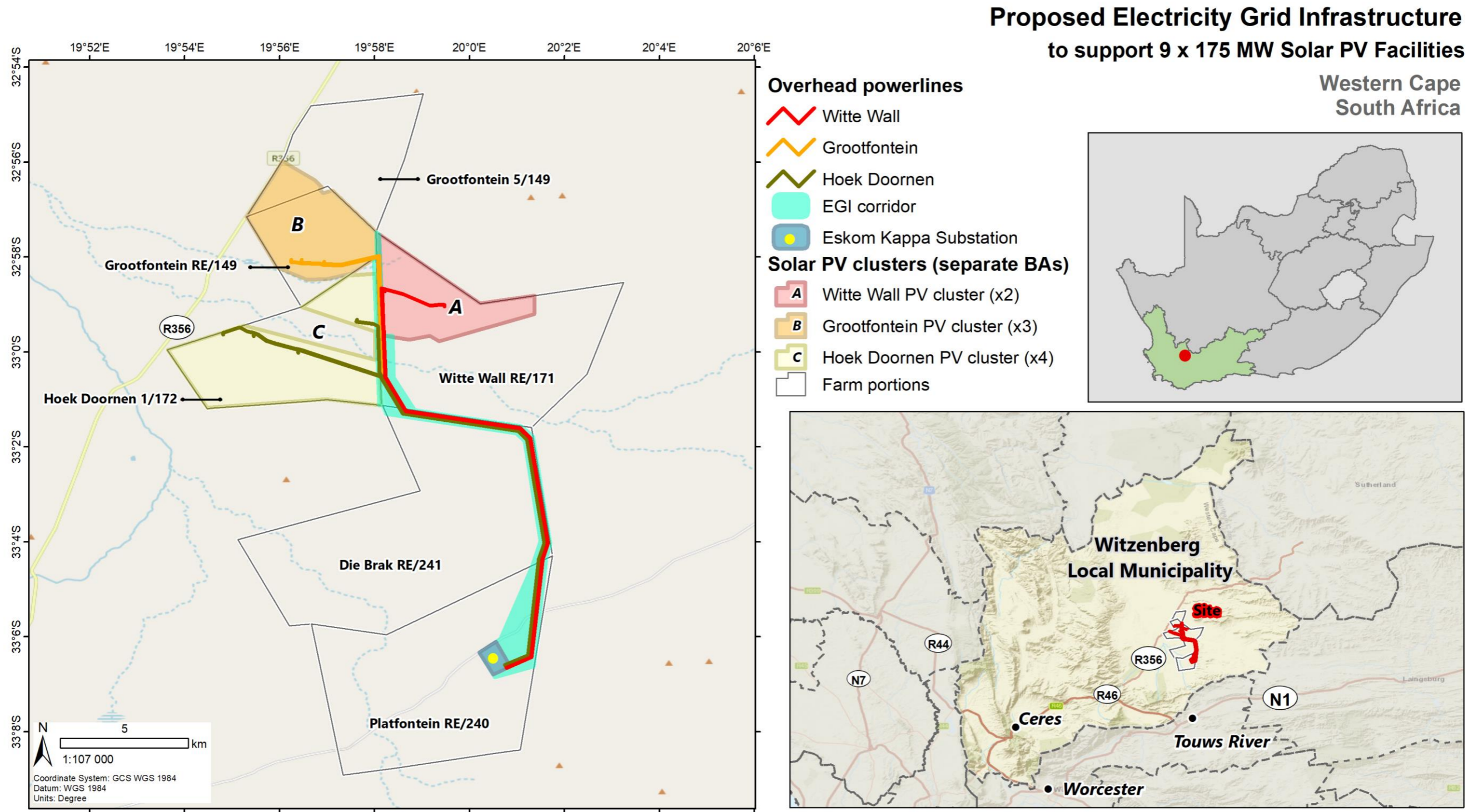
# Maps



APPENDICES

DRAFT BASIC ASSESSMENT REPORT: Basic Assessment for the Proposed Development of Electrical Grid Infrastructure to support the proposed nine 175 MW Solar Photovoltaic Facilities and associated Infrastructure (i.e. Witte Wall PV 1, Witte Wall PV 2, Grootfontein PV 1, Grootfontein PV 2, Grootfontein PV 3, Hoek Doornen PV 1, Hoek Doornen PV 2, Hoek Doornen PV 3, and Hoek Doornen PV 4), near Touws River, Western Cape

**Appendix A.1: Locality Map – Electrical Grid Infrastructure to support the proposed nine 175 MW Solar Photovoltaic Facilities and associated Infrastructure (i.e. Witte Wall PV 1, Witte Wall PV 2, Grootfontein PV 1, Grootfontein PV 2, Grootfontein PV 3, Hoek Doornen PV 1, Hoek Doornen PV 2, Hoek Doornen PV 3, and Hoek Doornen PV 4)**



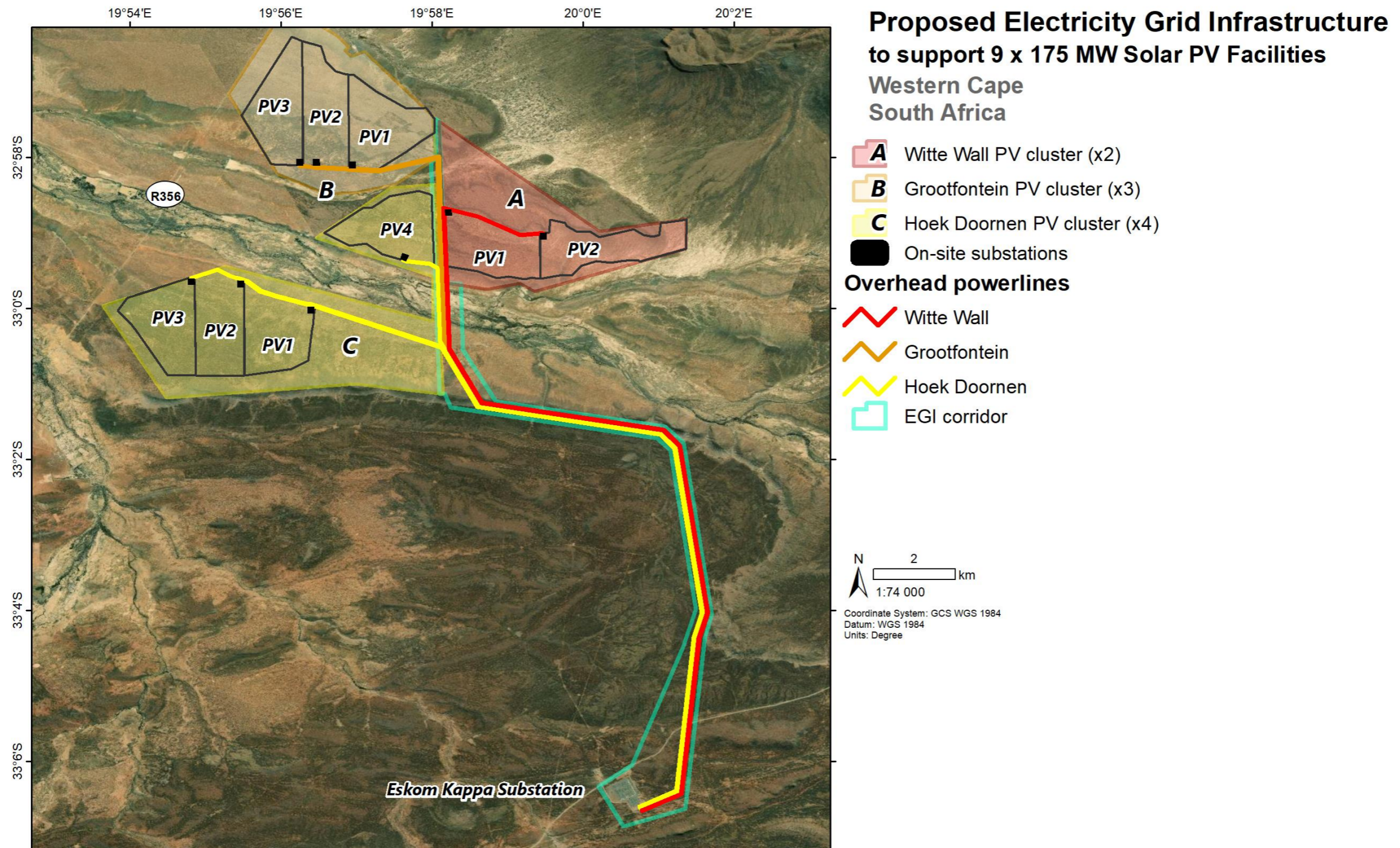
Service Layer Credits: © OpenStreetMap (and) contributors, CC-BY-SA  
Sources: Esri, HERE, Garmin, USGS, Intermap, INCREMENT P, NRCan, Esri Japan, METI, Esri China (Hong Kong), Esri Korea, Esri (Thailand), NGCC, (c)



APPENDICES

DRAFT BASIC ASSESSMENT REPORT: Basic Assessment for the Proposed Development of Electrical Grid Infrastructure to support the proposed nine 175 MW Solar Photovoltaic Facilities and associated Infrastructure (i.e. Witte Wall PV 1, Witte Wall PV 2, Grootfontein PV 1, Grootfontein PV 2, Grootfontein PV 3, Hoek Doornen PV 1, Hoek Doornen PV 2, Hoek Doornen PV 3, and Hoek Doornen PV 4), near Touws River, Western Cape

**Appendix A.2: Layout Map – Electrical Grid Infrastructure to support the proposed nine 175 MW Solar Photovoltaic Facilities and associated Infrastructure (i.e. Witte Wall PV 1, Witte Wall PV 2, Grootfontein PV 1, Grootfontein PV 2, Grootfontein PV 3, Hoek Doornen PV 1, Hoek Doornen PV 2, Hoek Doornen PV 3, and Hoek Doornen PV 4)**

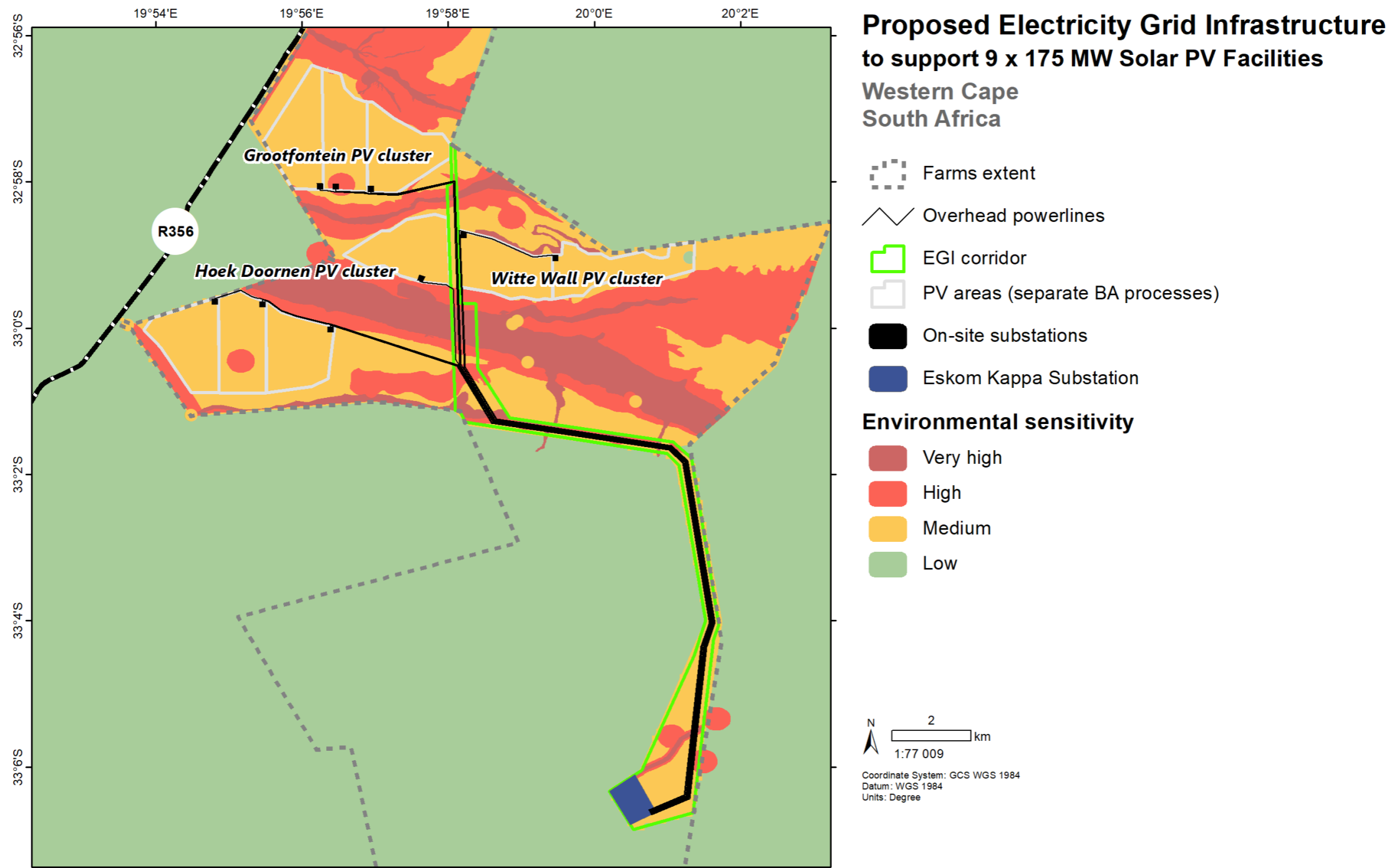




APPENDICES

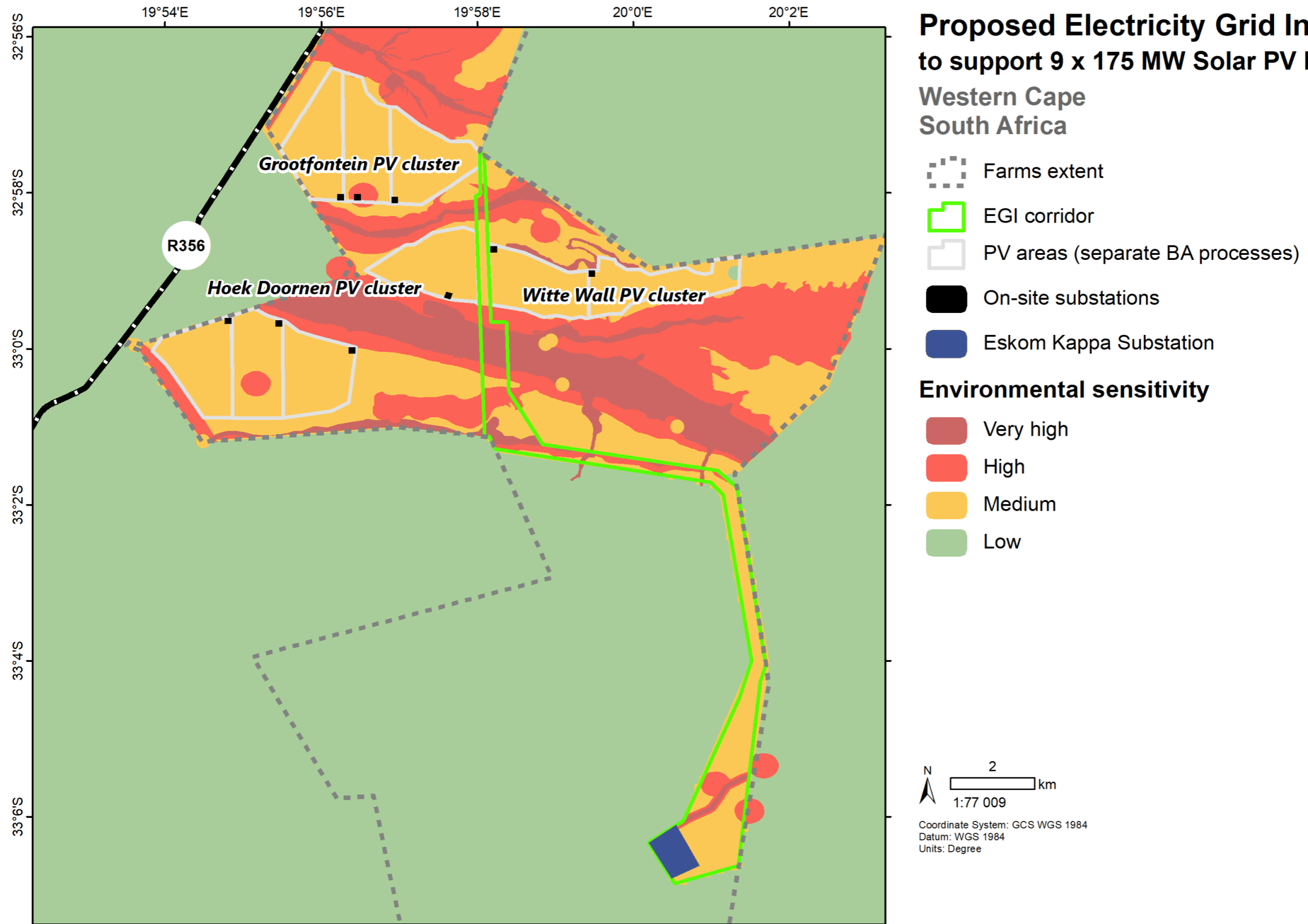
DRAFT BASIC ASSESSMENT REPORT: Basic Assessment for the Proposed Development of Electrical Grid Infrastructure to support the proposed nine 175 MW Solar Photovoltaic Facilities and associated Infrastructure (i.e. Witte Wall PV 1, Witte Wall PV 2, Grootfontein PV 1, Grootfontein PV 2, Grootfontein PV 3, Hoek Doornen PV 1, Hoek Doornen PV 2, Hoek Doornen PV 3, and Hoek Doornen PV 4), near Touws River, Western Cape

Appendix A.3: Sensitivity Maps



APPENDICES

DRAFT BASIC ASSESSMENT REPORT: Basic Assessment for the Proposed Development of Electrical Grid Infrastructure to support the proposed nine 175 MW Solar Photovoltaic Facilities and associated Infrastructure (i.e. Witte Wall PV 1, Witte Wall PV 2, Grootfontein PV 1, Grootfontein PV 2, Grootfontein PV 3, Hoek Doornen PV 1, Hoek Doornen PV 2, Hoek Doornen PV 3, and Hoek Doornen PV 4), near Touws River, Western Cape

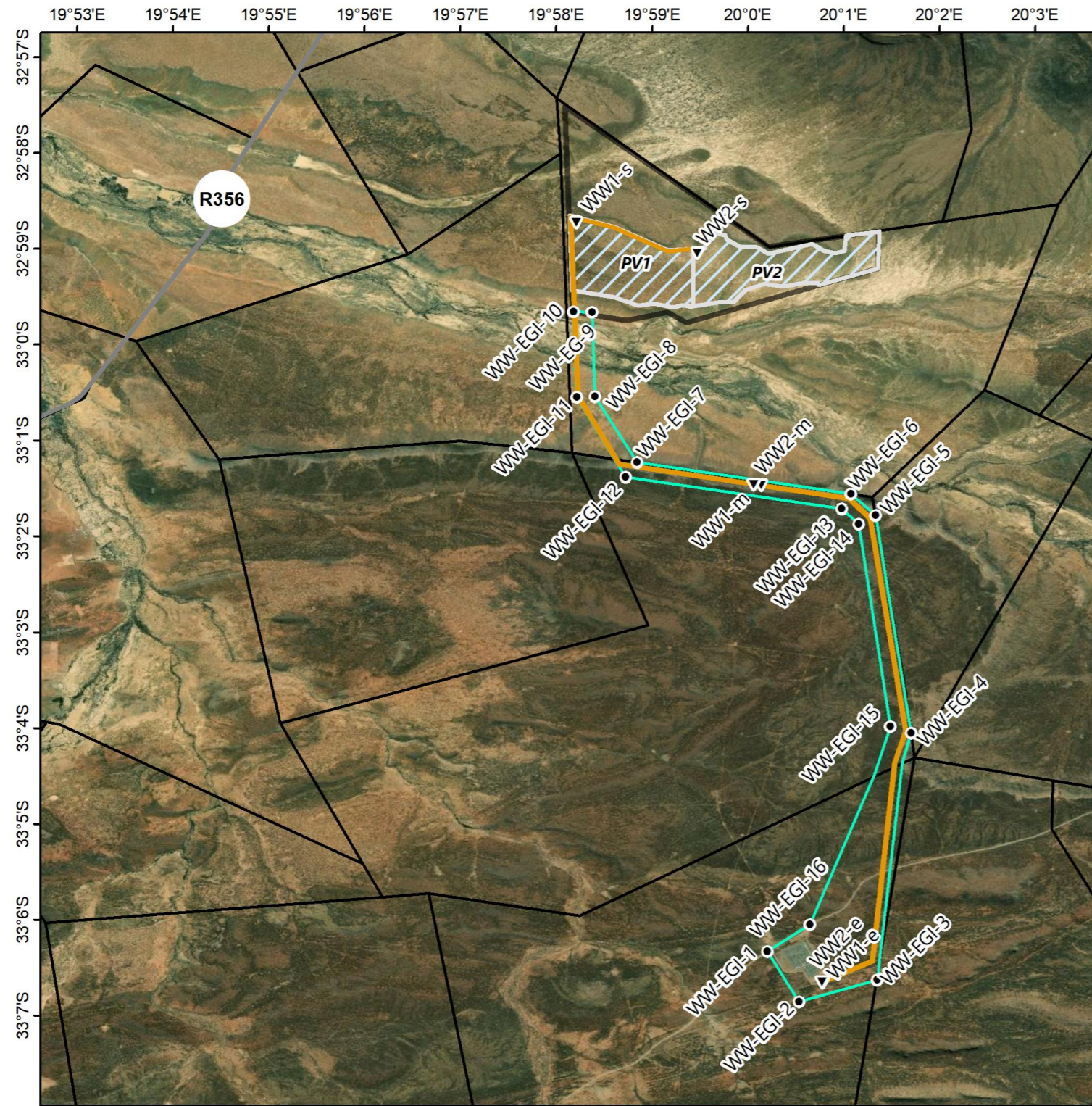




APPENDICES

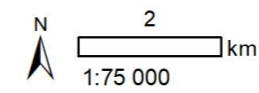
DRAFT BASIC ASSESSMENT REPORT: Basic Assessment for the Proposed Development of Electrical Grid Infrastructure to support the proposed nine 175 MW Solar Photovoltaic Facilities and associated Infrastructure (i.e. Witte Wall PV 1, Witte Wall PV 2, Grootfontein PV 1, Grootfontein PV 2, Grootfontein PV 3, Hoek Doornen PV 1, Hoek Doornen PV 2, Hoek Doornen PV 3, and Hoek Doornen PV 4), near Touws River, Western Cape

Appendix A.4: Approximate Project Co-ordinate Map – EGI for Witte Wall PV 1 and Witte Wall PV 2



**Proposed Electricity Grid Infrastructure to support 2 x 175 MW Witte Wall Solar PV facilities**  
Western Cape  
South Africa

- Witte Wall PV cluster site
- Witte Wall PV facilities
- Overhead power lines
- Power line coordinate points
- EGI corridor
- EGI corridor coordinate points
- Farm portions



Coordinate System: GCS WGS 1984  
Datum: WGS 1984  
Units: Degree

**EGI CORRIDOR**

Point ID	Lat (y)	Long (x)
WW-EGI-1	-33.1055	20.00336
WW-EGI-2	-33.1143	20.00886
WW-EGI-3	-33.1105	20.02252
WW-EGI-4	-33.0676	20.02836
WW-EGI-5	-33.0296	20.02218
WW-EGI-6	-33.026	20.01796
WW-EGI-7	-33.0205	19.9807
WW-EGI-8	-33.0091	19.97342
WW-EGI-9	-32.9944	19.97297
WW-EGI-10	-32.9943	19.96964
WW-EGI-11	-33.0091	19.97024
WW-EGI-12	-33.023	19.97871
WW-EGI-13	-33.0285	20.01632
WW-EGI-14	-33.0312	20.01924
WW-EGI-15	-33.0664	20.02481
WW-EGI-16	-33.1008	20.01074

**POWER LINES**

Point ID	Lat (y)	Long (x)
WW1-s	-32.9787	19.9702
WW1-m	-33.0244	20.0023
WW1-e	-33.1109	20.0130
WW2-s	-32.9841	19.9912
WW2-m	-33.0244	20.0010
WW2-e	-33.1108	20.0129

*s: start at on-site substation*  
*m: approximate middle point*  
*e: end at Eskom Kappa substation*

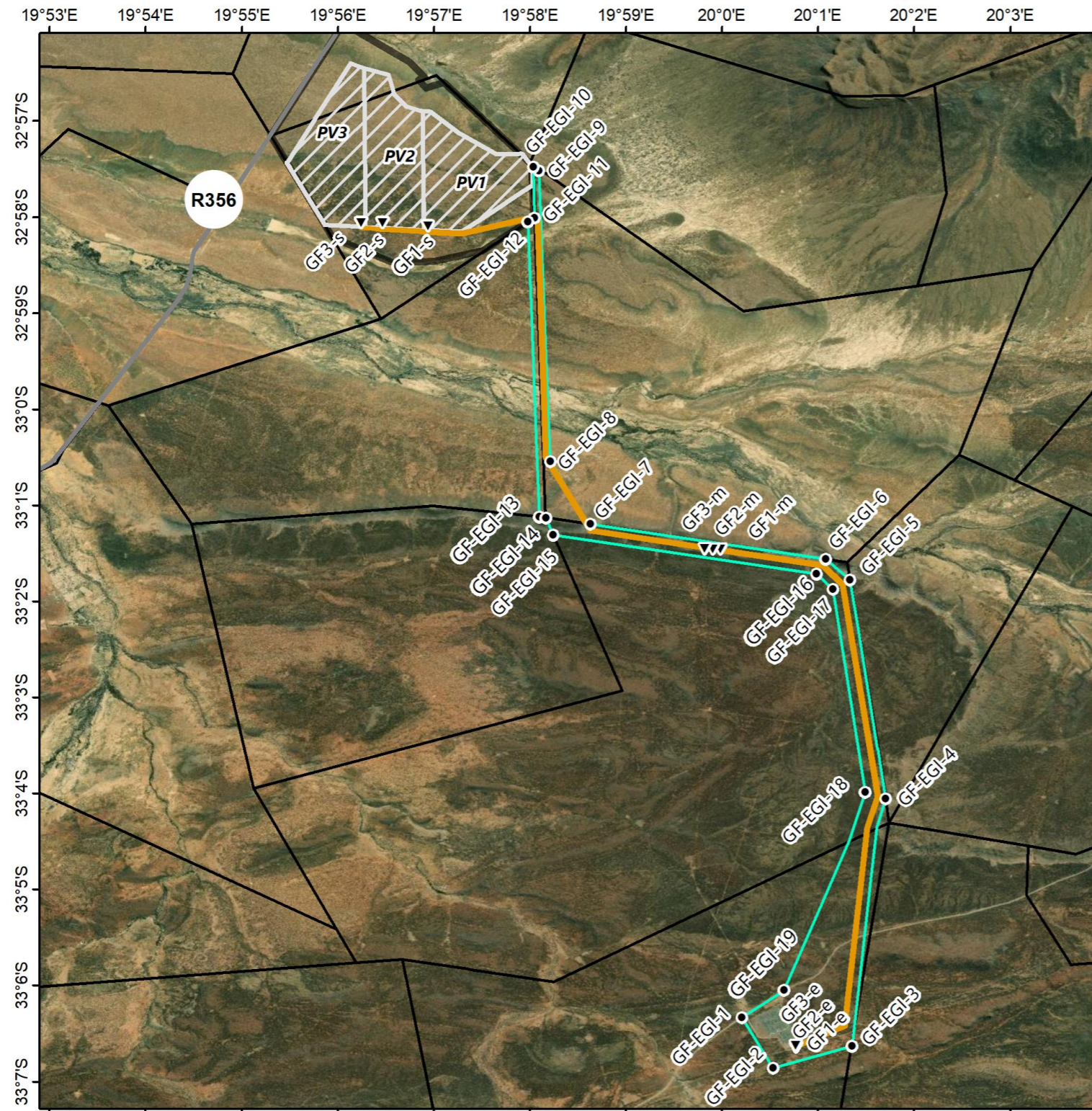
Service Layer Credits: Source: Esri, DigitalGlobe, GeoEye, Earthstar Geographics, CNES/Airbus DS, USDA, USGS, AeroGRID, IGN, and the GIS User Community



APPENDICES

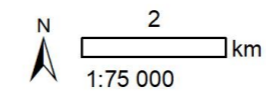
DRAFT BASIC ASSESSMENT REPORT: Basic Assessment for the Proposed Development of Electrical Grid Infrastructure to support the proposed nine 175 MW Solar Photovoltaic Facilities and associated Infrastructure (i.e. Witte Wall PV 1, Witte Wall PV 2, Grootfontein PV 1, Grootfontein PV 2, Grootfontein PV 3, Hoek Doornen PV 1, Hoek Doornen PV 2, Hoek Doornen PV 3, and Hoek Doornen PV 4), near Touws River, Western Cape

Appendix A.5: Approximate Project Co-ordinate Map – EGI for Grootfontein PV 1, Grootfontein PV 2 and Grootfontein PV 3



**Proposed Electricity Grid Infrastructure to support 3 x 175 MW Grootfontein Solar PV facilities**  
Western Cape  
South Africa

- Grootfontein PV cluster site
- Grootfontein PV facilities
- Overhead power lines
- Power line coordinate points
- EGI corridor
- EGI corridor coordinate points
- Farm portions



Coordinate System: GCS WGS 1984  
Datum: WGS 1984  
Units: Degree

**POWER LINES**

Point ID	Lat (y)	Long (x)
GF1-s	-32.9682	19.9490
GF1-m	-33.0243	19.9997
GF1-e	-33.1107	20.0128
GF2-s	-32.9677	19.9411
GF2-m	-33.0243	19.9984
GF2-e	-33.1106	20.0128
GF3-s	-32.9677	19.9374
GF3-m	-33.0242	19.9969
GF3-e	-33.1104	20.0127

s: start at on-site substation  
m: approximate middle point  
e: end at Eskom Kappa substation

**EGI CORRIDOR**

Point ID	Lat (y)	Long (x)
GF-EGI-1	-33.1055	20.00336
GF-EGI-2	-33.1143	20.00886
GF-EGI-3	-33.1105	20.02252
GF-EGI-4	-33.0676	20.02836
GF-EGI-5	-33.0296	20.02218
GF-EGI-6	-33.026	20.01796
GF-EGI-7	-33.0199	19.97719
GF-EGI-8	-33.0091	19.97024
GF-EGI-9	-32.9586	19.96817
GF-EGI-10	-32.958	19.96721
GF-EGI-11	-32.9668	19.96741
GF-EGI-12	-32.9675	19.96635
GF-EGI-13	-33.0187	19.96828
GF-EGI-14	-33.0188	19.9694
GF-EGI-15	-33.0218	19.97072
GF-EGI-16	-33.0285	20.01632
GF-EGI-17	-33.0312	20.01924
GF-EGI-18	-33.0664	20.02481
GF-EGI-19	-33.1008	20.01074

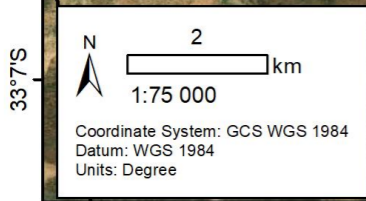
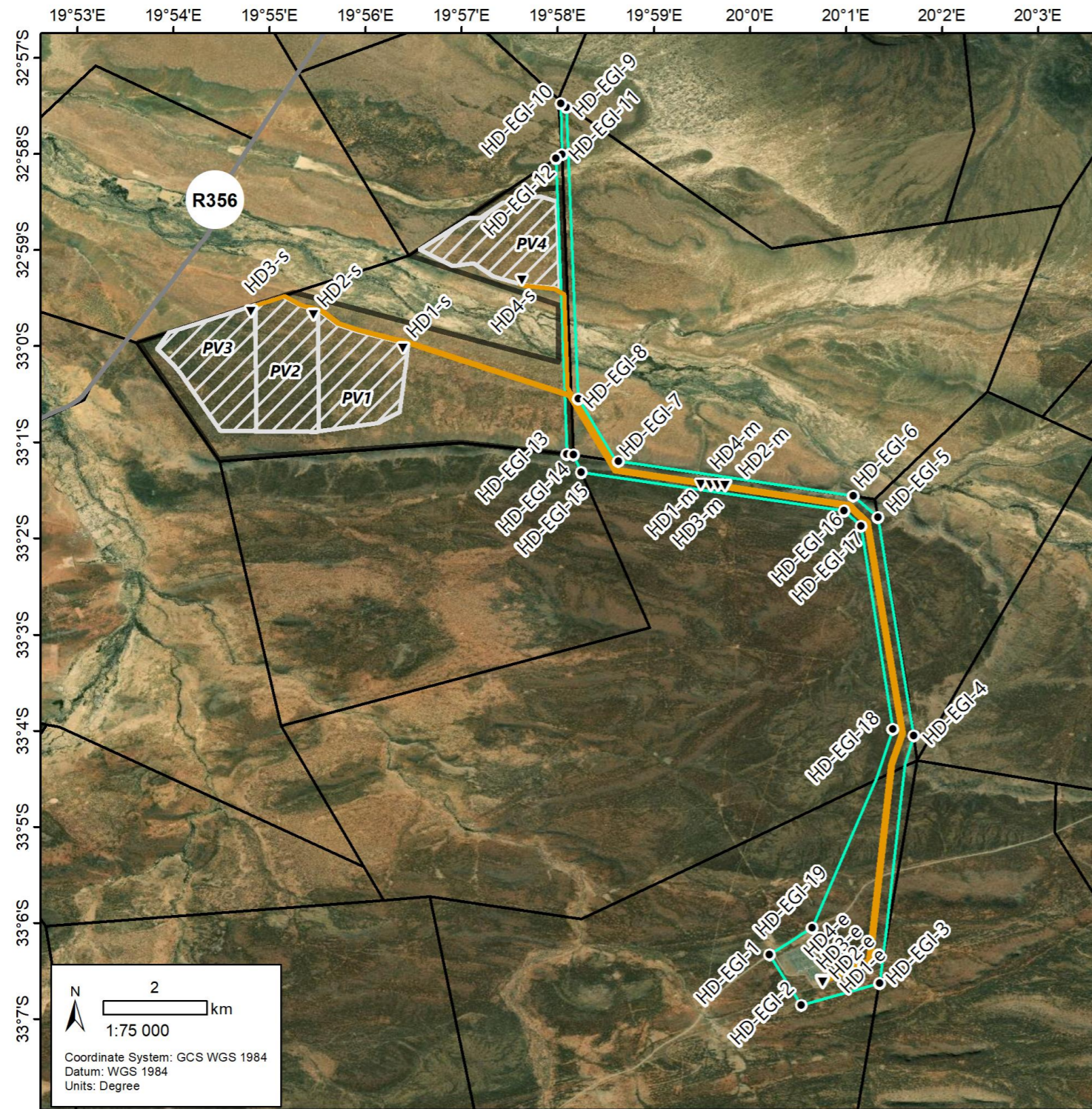
Service Layer Credits: Source: Esri, DigitalGlobe, GeoEye, Earthstar Geographics, CNES/Airbus DS, USDA, USGS, AeroGRID, IGN, and the GIS User Community



APPENDICES

DRAFT BASIC ASSESSMENT REPORT: Basic Assessment for the Proposed Development of Electrical Grid Infrastructure to support the proposed nine 175 MW Solar Photovoltaic Facilities and associated Infrastructure (i.e. Witte Wall PV 1, Witte Wall PV 2, Grootfontein PV 1, Grootfontein PV 2, Grootfontein PV 3, Hoek Doornen PV 1, Hoek Doornen PV 2, Hoek Doornen PV 3, and Hoek Doornen PV 4), near Touws River, Western Cape

Appendix A.6: Approximate Project Co-ordinate Map – EGI for Hoek Doornen PV 1, Hoek Doornen PV 2, Hoek Doornen PV 3, and Hoek Doornen PV 4



Service Layer Credits: Source: Esri, DigitalGlobe, GeoEye, Earthstar Geographics, CNES/Airbus DS, USDA, USGS, AeroGRID, IGN, and the GIS User Community

Proposed Electricity Grid Infrastructure to support 4 x 175 MW Hoek Doornen Solar PV facilities Western Cape South Africa

- Hoek Doornen PV cluster site
- Hoek Doornen PV facilities
- Overhead power lines
- Power line coordinate points
- EGI corridor
- EGI corridor coordinate points
- Farm portions

POWER LINES

Point ID	Lat (y)	Long (x)
HD1-s	-33.0003	19.9399
HD1-m	-33.0239	19.9915
HD1-e	-33.1099	20.0124
HD2-s	-32.9945	19.9243
HD2-m	-33.0240	19.9932
HD2-e	-33.1101	20.0125
HD3-s	-32.9940	19.9135
HD3-m	-33.0241	19.9945
HD3-e	-33.1102	20.0125
HD4-s	-32.9886	19.9605
HD4-m	-33.0241	19.9957
HD4-e	-33.1103	20.0126

s: start at on-site substation  
 m: approximate middle point  
 e: end at Eskom Kappa substation

EGI CORRIDOR

Point ID	Lat (y)	Long (x)
HD-EGI-1	-33.1055	20.00336
HD-EGI-2	-33.1143	20.00886
HD-EGI-3	-33.1105	20.02252
HD-EGI-4	-33.0676	20.02836
HD-EGI-5	-33.0296	20.02218
HD-EGI-6	-33.026	20.01796
HD-EGI-7	-33.0199	19.97719
HD-EGI-8	-33.0091	19.97024
HD-EGI-9	-32.9586	19.96817
HD-EGI-10	-32.958	19.96721
HD-EGI-11	-32.9668	19.96741
HD-EGI-12	-32.9675	19.96635
HD-EGI-13	-33.0187	19.96828
HD-EGI-14	-33.0188	19.9694
HD-EGI-15	-33.0218	19.97072
HD-EGI-16	-33.0285	20.01632
HD-EGI-17	-33.0312	20.01924
HD-EGI-18	-33.0664	20.02481
HD-EGI-19	-33.1008	20.01074



## APPENDICES

**DRAFT BASIC ASSESSMENT REPORT:** Basic Assessment for the Proposed Development of Electrical Grid Infrastructure to support the proposed nine 175 MW Solar Photovoltaic Facilities and associated Infrastructure (i.e. Witte Wall PV 1, Witte Wall PV 2, Grootfontein PV 1, Grootfontein PV 2, Grootfontein PV 3, Hoek Doornen PV 1, Hoek Doornen PV 2, Hoek Doornen PV 3, and Hoek Doornen PV 4), near Touws River, Western Cape

### Appendix A.7: List of Co-ordinates for Electrical Grid Infrastructure to support the proposed nine 175 MW Solar Photovoltaic Facilities and associated Infrastructure (i.e. Witte Wall PV 1, Witte Wall PV 2, Grootfontein PV 1, Grootfontein PV 2, Grootfontein PV 3, Hoek Doornen PV 1, Hoek Doornen PV 2, Hoek Doornen PV 3, and Hoek Doornen PV 4)

#### Power Lines

Point	Project	DD		DMS	
		Latitude (Y)	Longitude (X)	Latitude (Y)	Longitude (X)
<b>POWER LINE TO SUPPORT WITTE WALL PV 1</b>					
WW1-s	WitteWall PV 1	-32.9787	19.9702	32° 58' 43.489" S	19° 58' 12.719" E
WW1-m	WitteWall PV 1	-33.0244	20.0023	33° 1' 27.921" S	20° 0' 8.377" E
WW1-e	WitteWall PV 1	-33.1109	20.0130	33° 6' 39.326" S	20° 0' 46.776" E
<b>POWER LINE TO SUPPORT WITTE WALL PV 2</b>					
WW2-s	WitteWall PV 2	-32.9841	19.9912	32° 59' 2.687" S	19° 59' 28.371" E
WW2-m	WitteWall PV 2	-33.0244	20.0010	33° 1' 27.708" S	20° 0' 3.578" E
WW2-e	WitteWall PV 2	-33.1108	20.0129	33° 6' 38.878" S	20° 0' 46.506" E
<b>POWER LINE TO SUPPORT GROOTFONTEIN PV 1</b>					
GF1-s	Grootfontein PV 1	-32.9682	19.9490	32° 58' 5.693" S	19° 56' 56.391" E
GF1-m	Grootfontein PV 1	-33.0243	19.9997	33° 1' 27.532" S	19° 59' 59.019" E
GF1-e	Grootfontein PV 1	-33.1107	20.0128	33° 6' 38.429" S	20° 0' 46.235" E
<b>POWER LINE TO SUPPORT GROOTFONTEIN PV 2</b>					
GF2-s	Grootfontein PV 2	-32.9677	19.9411	32° 58' 3.630" S	19° 56' 27.839" E
GF2-m	Grootfontein PV 2	-33.0243	19.9984	33° 1' 27.313" S	19° 59' 54.181" E
GF2-e	Grootfontein PV 2	-33.1106	20.0128	33° 6' 37.980" S	20° 0' 45.965" E
<b>POWER LINE TO SUPPORT GROOTFONTEIN PV 3</b>					
GF3-s	Grootfontein PV 3	-32.9677	19.9374	32° 58' 3.653" S	19° 56' 14.709" E
GF3-m	Grootfontein PV 3	-33.0242	19.9969	33° 1' 27.026" S	19° 59' 48.881" E
GF3-e	Grootfontein PV 3	-33.1104	20.0127	33° 6' 37.531" S	20° 0' 45.685" E



## APPENDICES

**DRAFT BASIC ASSESSMENT REPORT:** Basic Assessment for the Proposed Development of Electrical Grid Infrastructure to support the proposed nine 175 MW Solar Photovoltaic Facilities and associated Infrastructure (i.e. Witte Wall PV 1, Witte Wall PV 2, Grootfontein PV 1, Grootfontein PV 2, Grootfontein PV 3, Hoek Doornen PV 1, Hoek Doornen PV 2, Hoek Doornen PV 3, and Hoek Doornen PV 4), near Touws River, Western Cape

Point	Project	DD		DMS	
		Latitude (Y)	Longitude (X)	Latitude (Y)	Longitude (X)
<b>POWER LINE TO SUPPORT HOEK DOORNEN PV 1</b>					
HD1-s	Hoek Doornen PV 1	-33.0003	19.9399	33° 0' 1.231" S	19° 56' 23.475" E
HD1-m	Hoek Doornen PV 1	-33.0239	19.9915	33° 1' 26.135" S	19° 59' 29.425" E
HD1-e	Hoek Doornen PV 1	-33.1099	20.0124	33° 6' 35.736" S	20° 0' 44.614" E
<b>POWER LINE TO SUPPORT HOEK DOORNEN PV 2</b>					
HD2-s	Hoek Doornen PV 2	-32.9945	19.9243	32° 59' 40.337" S	19° 55' 27.432" E
HD2-m	Hoek Doornen PV 2	-33.0240	19.9932	33° 1' 26.558" S	19° 59' 35.621" E
HD2-e	Hoek Doornen PV 2	-33.1101	20.0125	33° 6' 36.185" S	20° 0' 44.884" E
<b>POWER LINE TO SUPPORT HOEK DOORNEN PV 3</b>					
HD3-s	Hoek Doornen PV 3	-32.9940	19.9135	32° 59' 38.429" S	19° 54' 48.437" E
HD3-m	Hoek Doornen PV 3	-33.0241	19.9945	33° 1' 26.712" S	19° 59' 40.029" E
HD3-e	Hoek Doornen PV 3	-33.1102	20.0125	33° 6' 36.634" S	20° 0' 45.155" E
<b>POWER LINE TO SUPPORT HOEK DOORNEN PV 4</b>					
HD4-s	Hoek Doornen PV 4	-32.9886	19.9605	32° 59' 18.952" S	19° 57' 37.646" E
HD4-m	Hoek Doornen PV 4	-33.0241	19.9957	33° 1' 26.881" S	19° 59' 44.537" E
HD4-e	Hoek Doornen PV 4	-33.1103	20.0126	33° 6' 37.083" S	20° 0' 45.425" E

## EGI CORRIDOR

Point	DD		DMS	
	Latitude (Y)	Longitude (X)	Latitude (Y)	Longitude (X)
<b>EGI CORRIDOR FOR WITTE WALL PV 1 AND WITTE WALL PV 2</b>				
WW-EGI-1	-33.10553881	20.00336161	33° 6' 19.940" S	20° 0' 12.102" E
WW-EGI-2	-33.11425606	20.00886078	33° 6' 51.322" S	20° 0' 31.899" E
WW-EGI-3	-33.11048603	20.02252006	33° 6' 37.750" S	20° 1' 21.072" E
WW-EGI-4	-33.06758122	20.02836128	33° 4' 3.292" S	20° 1' 42.101" E
WW-EGI-5	-33.02963547	20.02218225	33° 1' 46.688" S	20° 1' 19.856" E
WW-EGI-6	-33.02598225	20.01796267	33° 1' 33.536" S	20° 1' 4.666" E
WW-EGI-7	-33.02045503	19.98070044	33° 1' 13.638" S	19° 58' 50.522" E



## APPENDICES

**DRAFT BASIC ASSESSMENT REPORT:** Basic Assessment for the Proposed Development of Electrical Grid Infrastructure to support the proposed nine 175 MW Solar Photovoltaic Facilities and associated Infrastructure (i.e. Witte Wall PV 1, Witte Wall PV 2, Grootfontein PV 1, Grootfontein PV 2, Grootfontein PV 3, Hoek Doornen PV 1, Hoek Doornen PV 2, Hoek Doornen PV 3, and Hoek Doornen PV 4), near Touws River, Western Cape

Point	DD		DMS	
	Latitude (Y)	Longitude (X)	Latitude (Y)	Longitude (X)
WW-EGI-8	-33.00905658	19.97341514	33° 0' 32.604" S	19° 58' 24.295" E
WW-EGI-9	-32.994378	19.97296708	32° 59' 39.761" S	19° 58' 22.681" E
WW-EGI-10	-32.99425794	19.96964458	32° 59' 39.329" S	19° 58' 10.720" E
WW-EGI-11	-33.00909822	19.97023986	33° 0' 32.754" S	19° 58' 12.863" E
WW-EGI-12	-33.02302626	19.97871026	33° 1' 22.895" S	19° 58' 43.357" E
WW-EGI-13	-33.02853908	20.0163195	33° 1' 42.741" S	20° 0' 58.750" E
WW-EGI-14	-33.03123831	20.01923942	33° 1' 52.458" S	20° 1' 9.262" E
WW-EGI-15	-33.06643048	20.02481179	33° 3' 59.150" S	20° 1' 29.322" E
WW-EGI-16	-33.10083356	20.01074306	33° 6' 3.001" S	20° 0' 38.675" E
<b>EGI CORRIDOR FOR GROOTFONTEIN PV 1, GROOTFONTEIN PV 2, AND GROOTFONTEIN PV 3</b>				
GF-EGI-1	-33.10553881	20.00336161	33° 6' 19.940" S	20° 0' 12.102" E
GF-EGI-2	-33.11425606	20.00886078	33° 6' 51.322" S	20° 0' 31.899" E
GF-EGI-3	-33.11048603	20.02252006	33° 6' 37.750" S	20° 1' 21.072" E
GF-EGI-4	-33.06758122	20.02836128	33° 4' 3.292" S	20° 1' 42.101" E
GF-EGI-5	-33.02963547	20.02218225	33° 1' 46.688" S	20° 1' 19.856" E
GF-EGI-6	-33.02598225	20.01796267	33° 1' 33.536" S	20° 1' 4.666" E
GF-EGI-7	-33.01994174	19.97718924	33° 1' 11.790" S	19° 58' 37.881" E
GF-EGI-8	-33.00909822	19.97023986	33° 0' 32.754" S	19° 58' 12.863" E
GF-EGI-9	-32.95860599	19.96816555	32° 57' 30.982" S	19° 58' 5.396" E
GF-EGI-10	-32.95797405	19.96721205	32° 57' 28.707" S	19° 58' 1.963" E
GF-EGI-11	-32.96679247	19.96741022	32° 58' 0.453" S	19° 58' 2.677" E
GF-EGI-12	-32.96749539	19.96634731	32° 58' 2.983" S	19° 57' 58.850" E
GF-EGI-13	-33.01871453	19.96828186	33° 1' 7.372" S	19° 58' 5.815" E
GF-EGI-14	-33.01884794	19.96939598	33° 1' 7.853" S	19° 58' 9.826" E
GF-EGI-15	-33.02183813	19.97072041	33° 1' 18.617" S	19° 58' 14.593" E
GF-EGI-16	-33.02853908	20.0163195	33° 1' 42.741" S	20° 0' 58.750" E
GF-EGI-17	-33.03123831	20.01923942	33° 1' 52.458" S	20° 1' 9.262" E
GF-EGI-18	-33.06643048	20.02481179	33° 3' 59.150" S	20° 1' 29.322" E
GF-EGI-19	-33.10083356	20.01074306	33° 6' 3.001" S	20° 0' 38.675" E



## APPENDICES

**DRAFT BASIC ASSESSMENT REPORT:** Basic Assessment for the Proposed Development of Electrical Grid Infrastructure to support the proposed nine 175 MW Solar Photovoltaic Facilities and associated Infrastructure (i.e. Witte Wall PV 1, Witte Wall PV 2, Grootfontein PV 1, Grootfontein PV 2, Grootfontein PV 3, Hoek Doornen PV 1, Hoek Doornen PV 2, Hoek Doornen PV 3, and Hoek Doornen PV 4), near Touws River, Western Cape

Point	DD		DMS	
	Latitude (Y)	Longitude (X)	Latitude (Y)	Longitude (X)
<b>EGI CORRIDOR FOR HOEK DOORNEN PV 1, HOEK DOORNEN PV 2, HOEK DOORNEN PV 3 AND HOEK DOORNEN PV 4</b>				
HD-EGI-1	-33.10553881	20.00336161	33° 6' 19.940" S	20° 0' 12.102" E
HD-EGI-2	-33.11425606	20.00886078	33° 6' 51.322" S	20° 0' 31.899" E
HD-EGI-3	-33.11048603	20.02252006	33° 6' 37.750" S	20° 1' 21.072" E
HD-EGI-4	-33.06758122	20.02836128	33° 4' 3.292" S	20° 1' 42.101" E
HD-EGI-5	-33.02963547	20.02218225	33° 1' 46.688" S	20° 1' 19.856" E
HD-EGI-6	-33.02598225	20.01796267	33° 1' 33.536" S	20° 1' 4.666" E
HD-EGI-7	-33.01994174	19.97718924	33° 1' 11.790" S	19° 58' 37.881" E
HD-EGI-8	-33.00909822	19.97023986	33° 0' 32.754" S	19° 58' 12.863" E
HD-EGI-9	-32.95860599	19.96816555	32° 57' 30.982" S	19° 58' 5.396" E
HD-EGI-10	-32.95797405	19.96721205	32° 57' 28.707" S	19° 58' 1.963" E
HD-EGI-11	-32.96679247	19.96741022	32° 58' 0.453" S	19° 58' 2.677" E
HD-EGI-12	-32.96749539	19.96634731	32° 58' 2.983" S	19° 57' 58.850" E
HD-EGI-13	-33.01871453	19.96828186	33° 1' 7.372" S	19° 58' 5.815" E
HD-EGI-14	-33.01884794	19.96939598	33° 1' 7.853" S	19° 58' 9.826" E
HD-EGI-15	-33.02183813	19.97072041	33° 1' 18.617" S	19° 58' 14.593" E
HD-EGI-16	-33.02853908	20.0163195	33° 1' 42.741" S	20° 0' 58.750" E
HD-EGI-17	-33.03123831	20.01923942	33° 1' 52.458" S	20° 1' 9.262" E
HD-EGI-18	-33.06643048	20.02481179	33° 3' 59.150" S	20° 1' 29.322" E
HD-EGI-19	-33.10083356	20.01074306	33° 6' 3.001" S	20° 0' 38.675" E