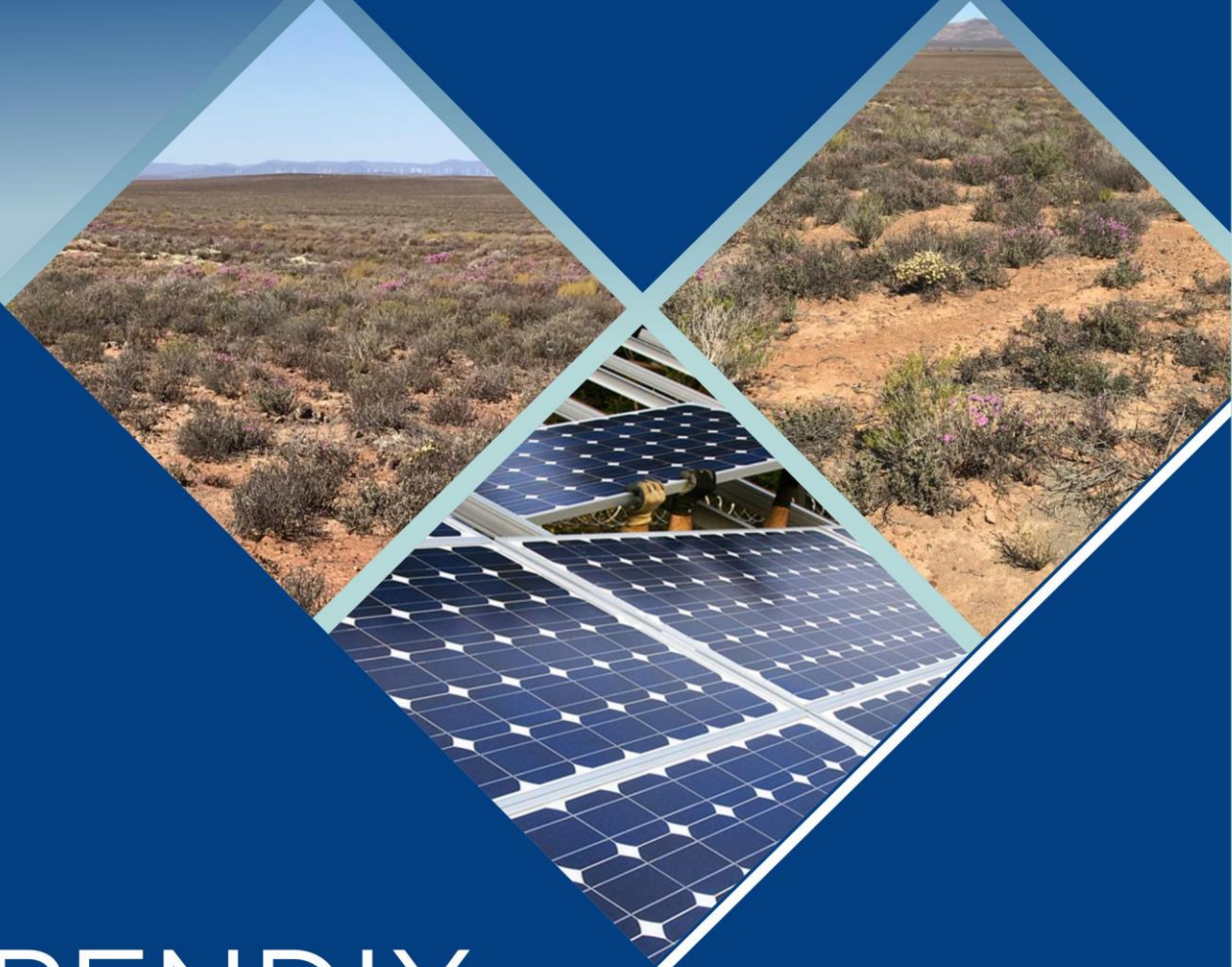


Basic Assessment for the Proposed Development of three 175 MW Solar Photovoltaic Facilities and associated Infrastructure (i.e. Grootfontein PV 1, Grootfontein PV 2, and Grootfontein PV 3), near Touws River, Western Cape

APPENDICES

- Appendix A: Maps
- Appendix B: Facility Illustrations
- Appendix C: Specialist Reports
- Appendix C.1: Agriculture Compliance Statement
- Appendix C.2: Visual Impact Assessment
- Appendix C.3: Heritage Impact Assessment (Archaeology, Cultural Landscape and Palaeontology)
- Appendix C.4: Terrestrial Biodiversity and Species
- Appendix C.5: Aquatic Biodiversity and Species
- Appendix C.6: Avifauna Assessment
- Appendix C.7: Socio-Economic Assessment
- Appendix C.8: Geohydrology Assessment
- Appendix C.9: Civil Aviation Site Sensitivity Verification
- Appendix C.10: Defence Site Sensitivity Verification
- Appendix D: Public Participation
- Appendix D.1: Public Participation Plan
- Appendix D.2: Submission of the Public Participation Plan to the DEFF
- Appendix D.3: DEFF Approval of the Public Participation Plan
- Appendix D.4: Copies and Proof of Placement of Site Notice Boards
- Appendix D.5: Copies of the content of the Newspaper Advertisements
- Appendix D.6: I&AP Database
- Appendix D.7: Pre-Application Stakeholder Correspondence
- Appendix D.8: Proof of Submission of the Notification of Intent to Develop (NID) to Heritage Western Cape (HWC)
- Appendix D.9: Acknowledgement of Receipt of the Notification of Intent to Develop (NID) from Heritage Western Cape (HWC)
- Appendix D.10: Proof of Consultation with the Witzenberg Local Municipality and Heritage Conservation Bodies for the Heritage Impact Assessment
- Appendix E: EAP Details, Expertise and Declaration of Interest
- Appendix F: Specialist Declarations of Interest
- Appendix G: Environmental Management Programme (EMPr)
- Appendix G.1: Environmental Management Programme (EMPr) for Grootfontein PV 1, Grootfontein PV 2, and Grootfontein PV 3 Projects
- Appendix G.2: Environmental Management Programme (EMPr) for the On-Site Substations for the Grootfontein PV 1, Grootfontein PV 2, and Grootfontein PV 3 Projects
- Appendix H: Pre-Consultation with the Competent Authority
- Appendix H.1: Pre-Application Meeting Request Form
- Appendix H.2: Pre-Application Meeting Presentation
- Appendix H.3: Pre-Application Meeting Notes
- Appendix H.4: Correspondence from the DEFF with Approval of the Pre-Application Meeting Notes
- Appendix H.5: Correspondence from the DEFF with Approval of the Combination and Multiple EA Request
- Appendix I: Additional Information

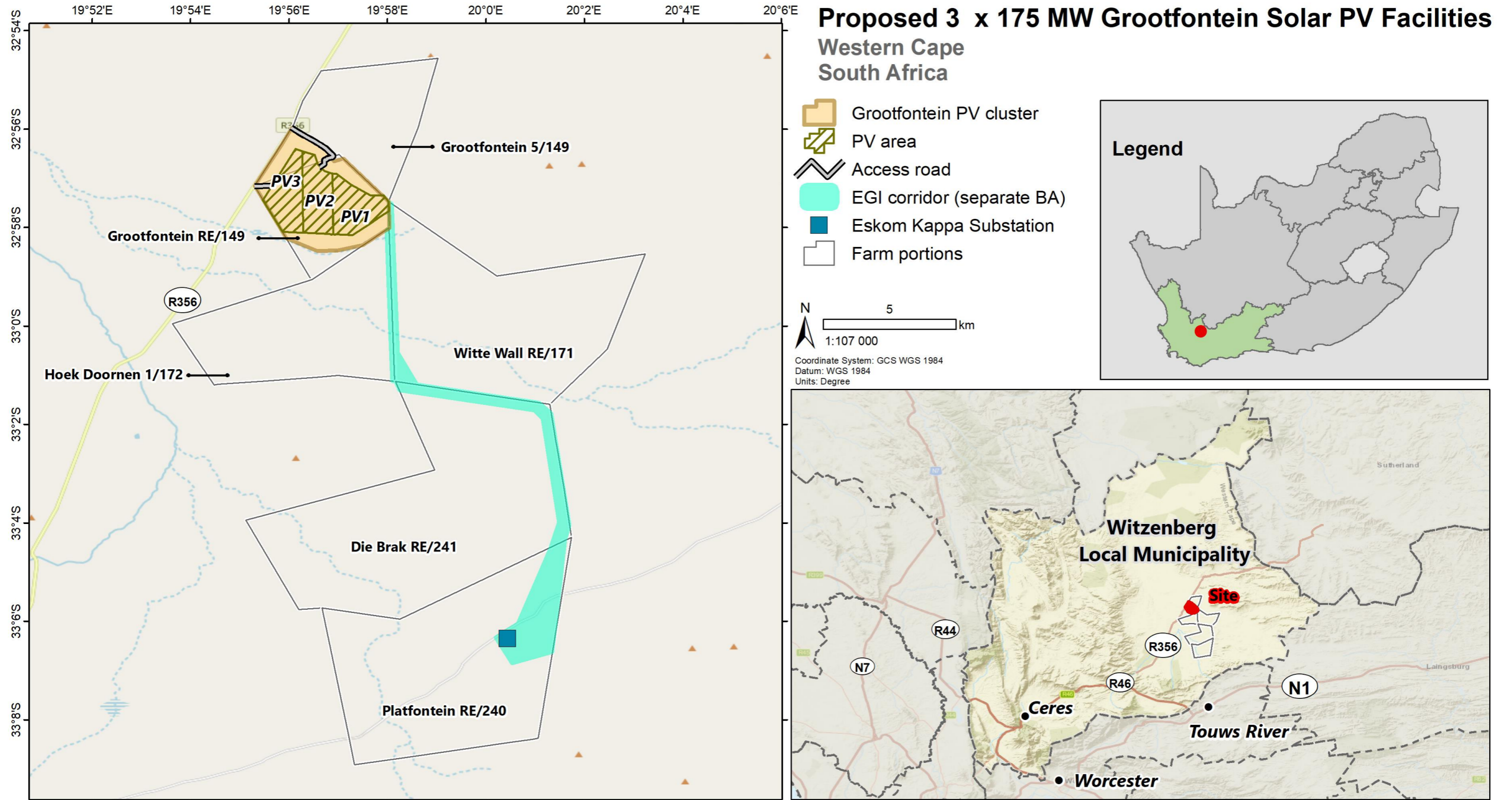
Basic Assessment for the Proposed Development of three 175 MW Solar Photovoltaic Facilities and associated Infrastructure (i.e. Grootfontein PV 1, Grootfontein PV 2, and Grootfontein PV 3), near Touws River, Western Cape



APPENDIX A

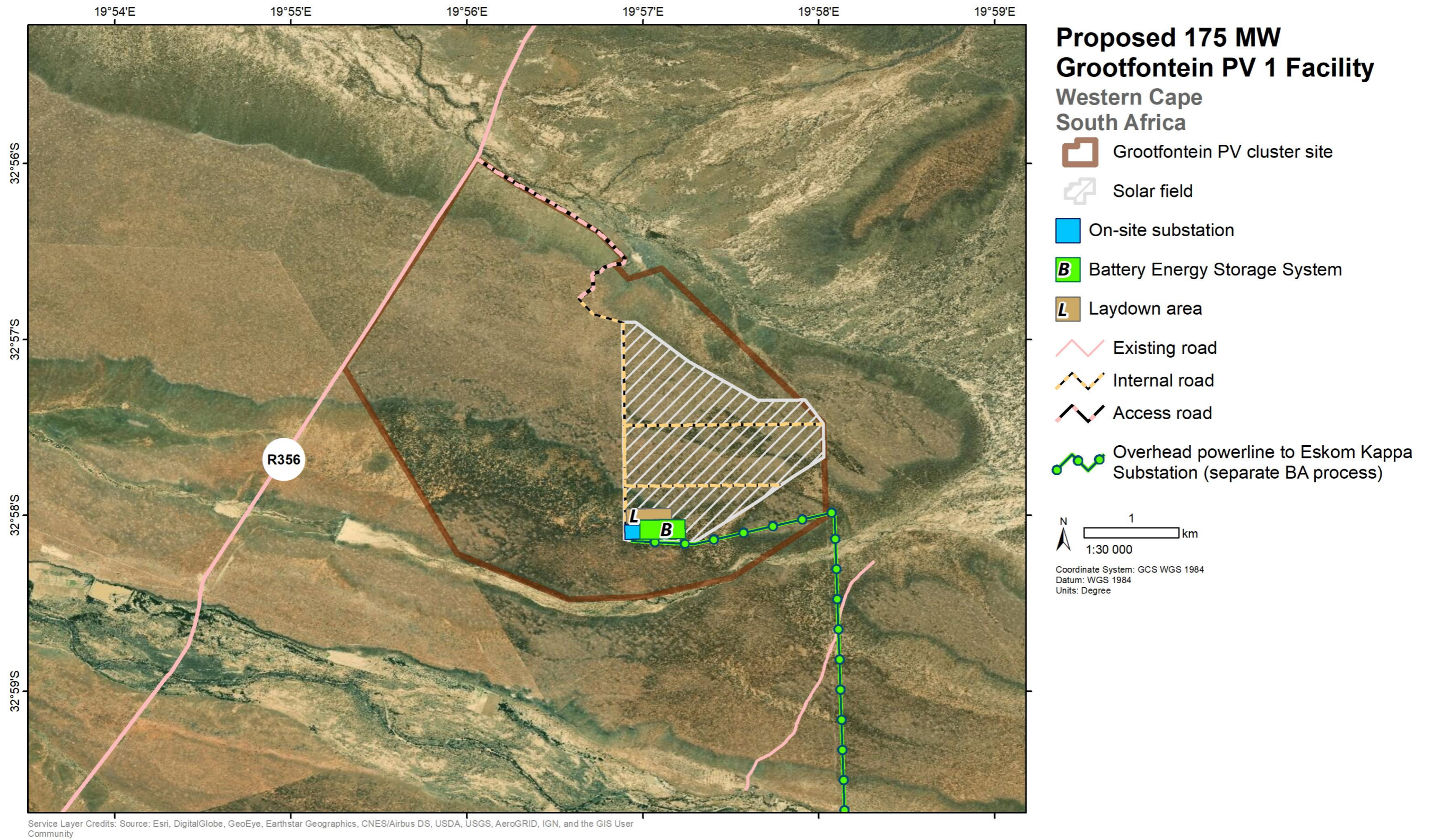
Maps

Appendix A.1: Locality Map – Grootfontein PV 1, Grootfontein PV 2 and Grootfontein PV 3

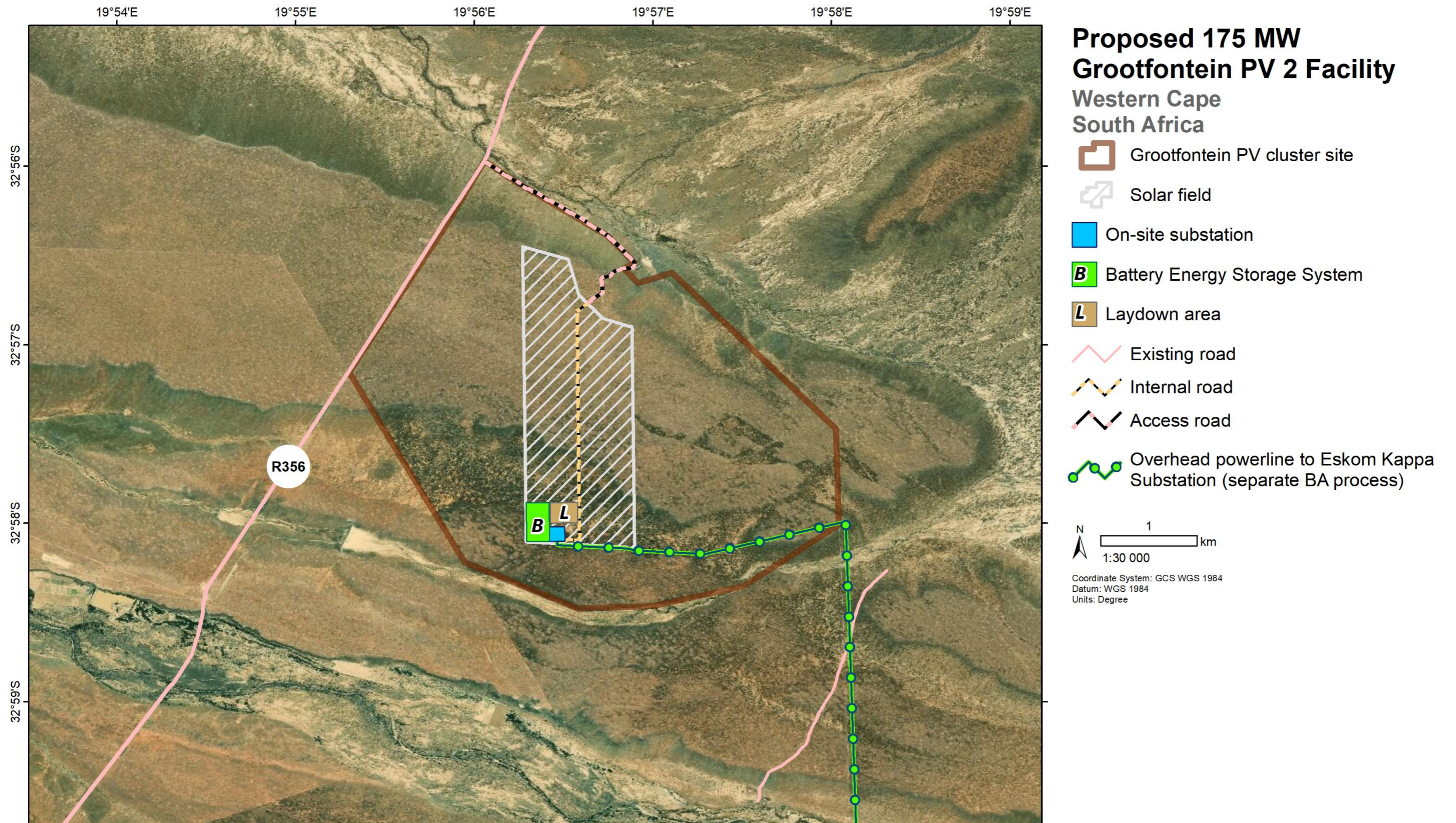


Service Layer Credits: © OpenStreetMap (and) contributors, CC-BY-SA
Sources: Esri, HERE, Garmin, USGS, Intermap, INCREMENT P, NRCan, Esri Japan, METI, Esri China (Hong Kong), Esri Korea, Esri (Thailand), NGCC, (c)

Appendix A.2: Layout Map – Grootfontein PV 1

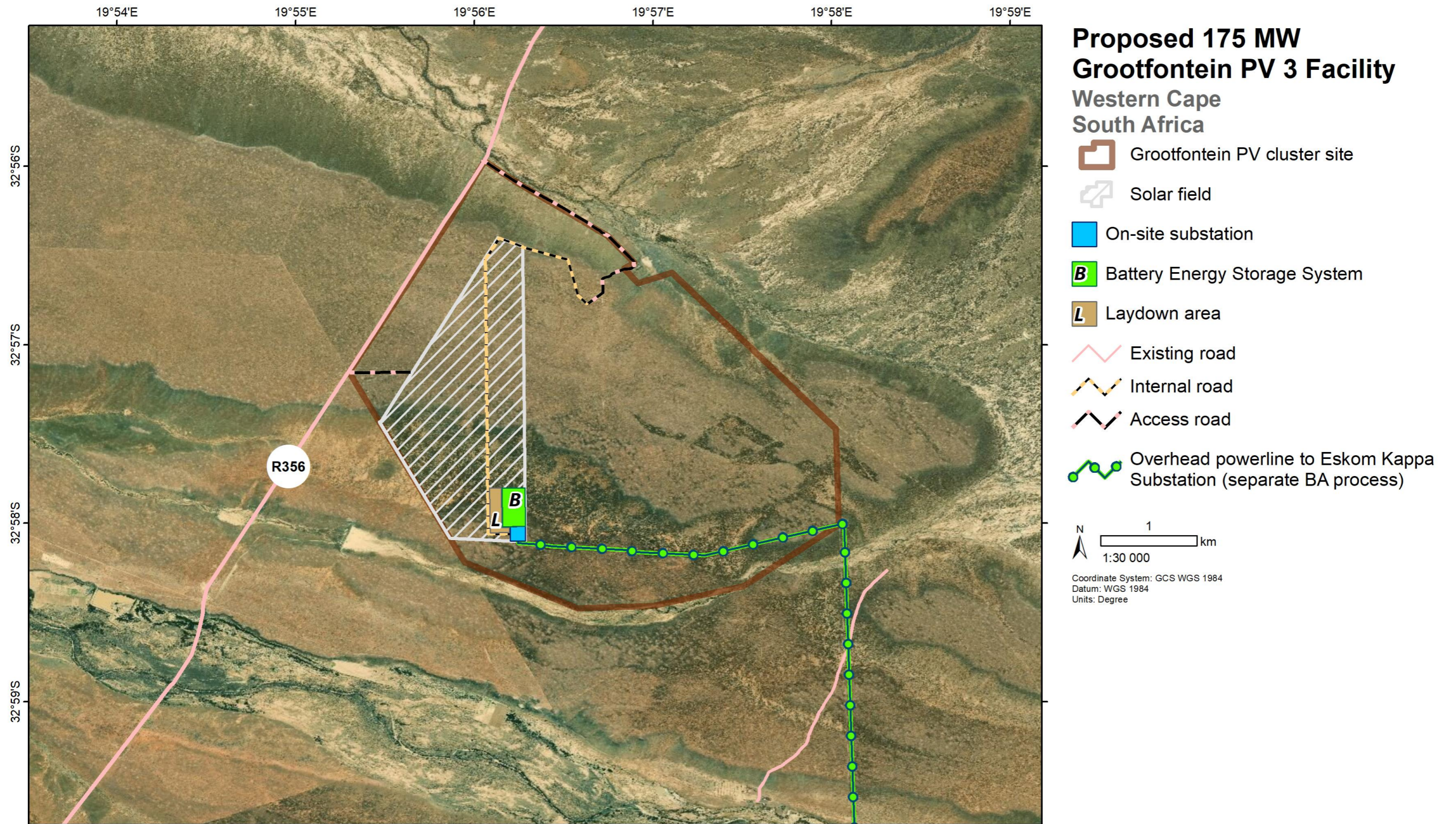


Appendix A.3: Layout Map – Grootfontein PV 2



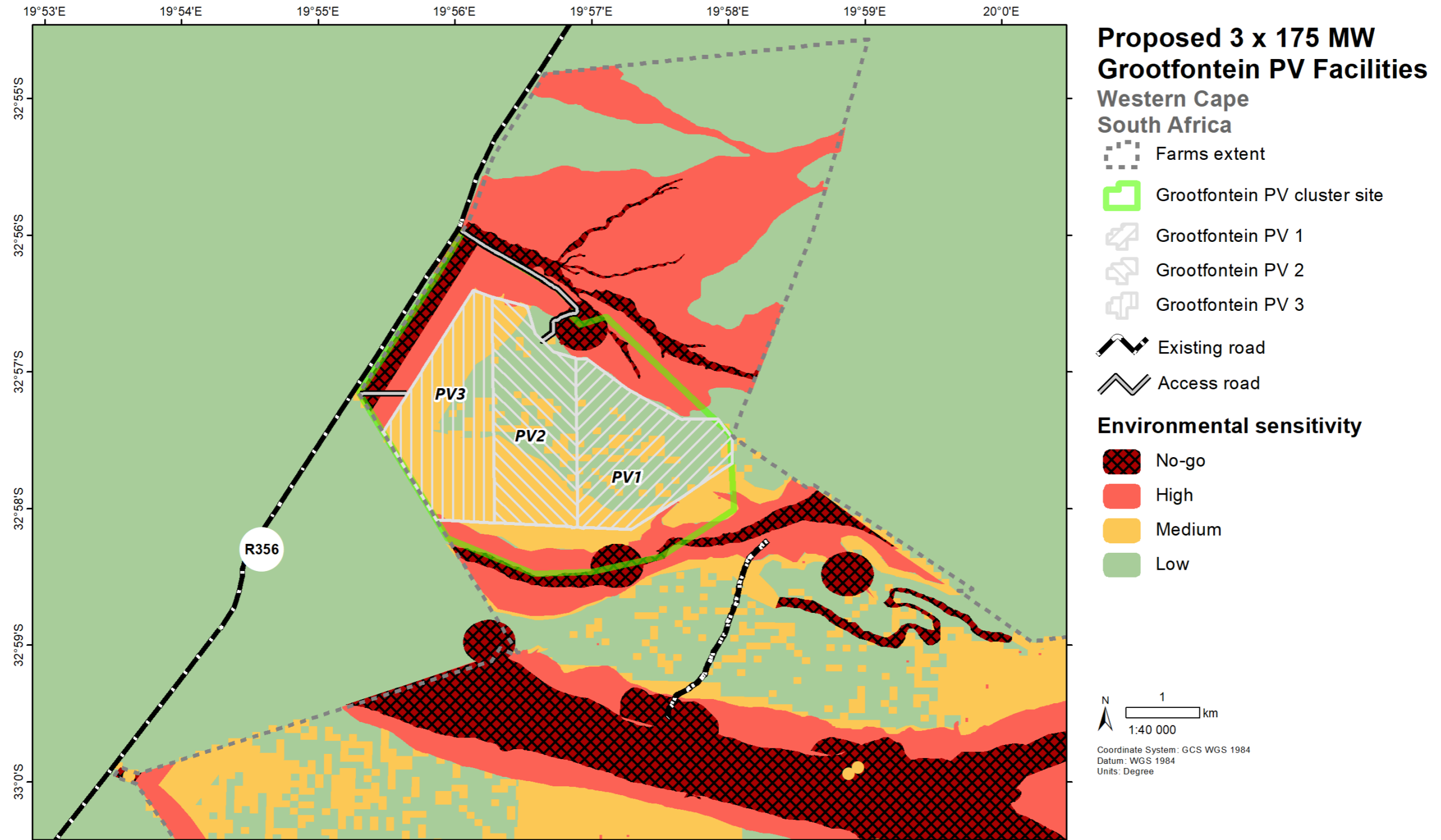
Service Layer Credits: Source: Esri, DigitalGlobe, GeoEye, Earthstar Geographics, CNES/Airbus DS, USDA, USGS, AeroGRID, IGN, and the GIS User Community

Appendix A.4: Layout Map – Grootfontein PV 3



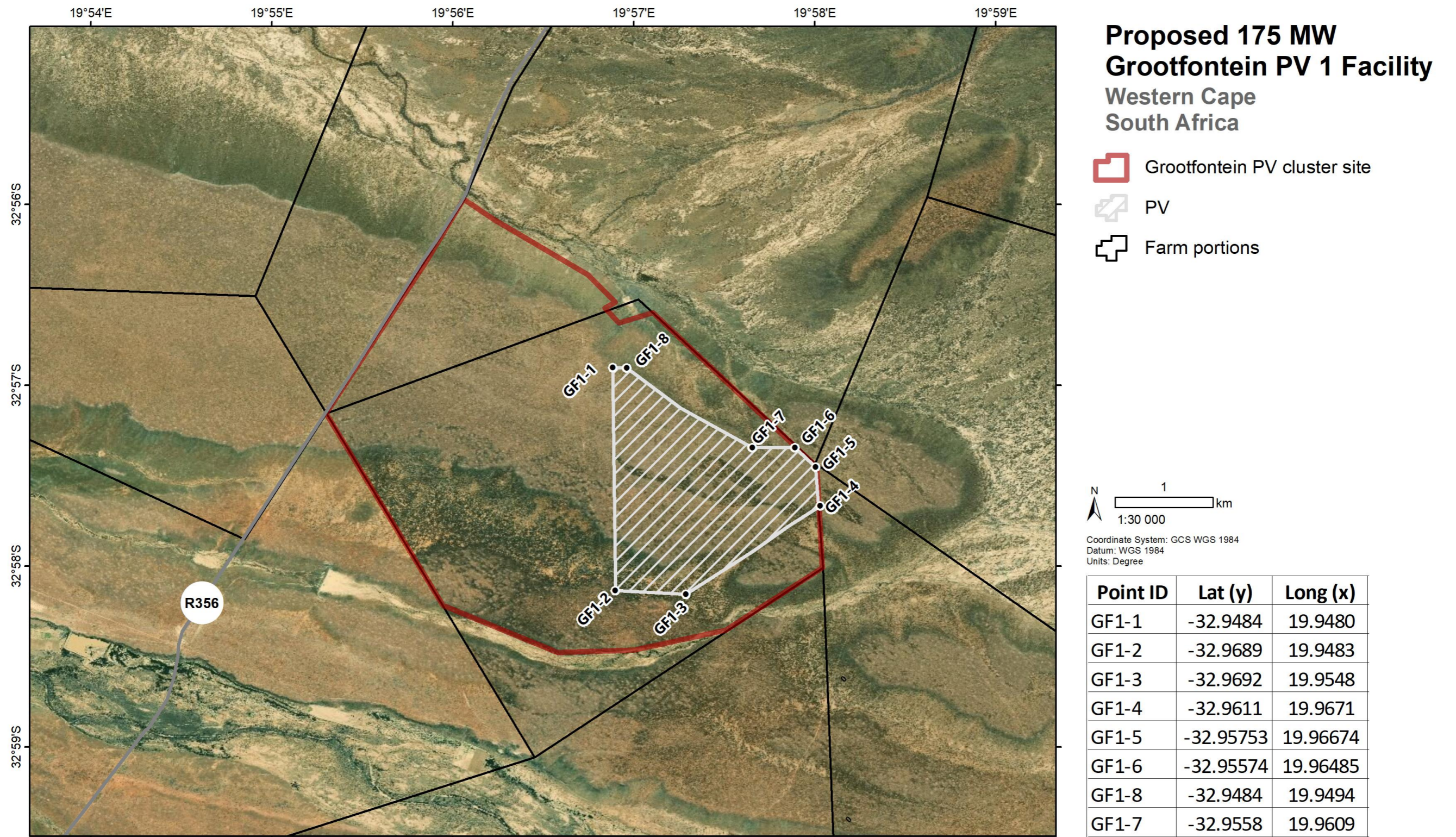
Service Layer Credits: Source: Esri, DigitalGlobe, GeoEye, Earthstar Geographics, CNES/Airbus DS, USDA, USGS, AeroGRID, IGN, and the GIS User Community

Appendix A.5: Sensitivity Map



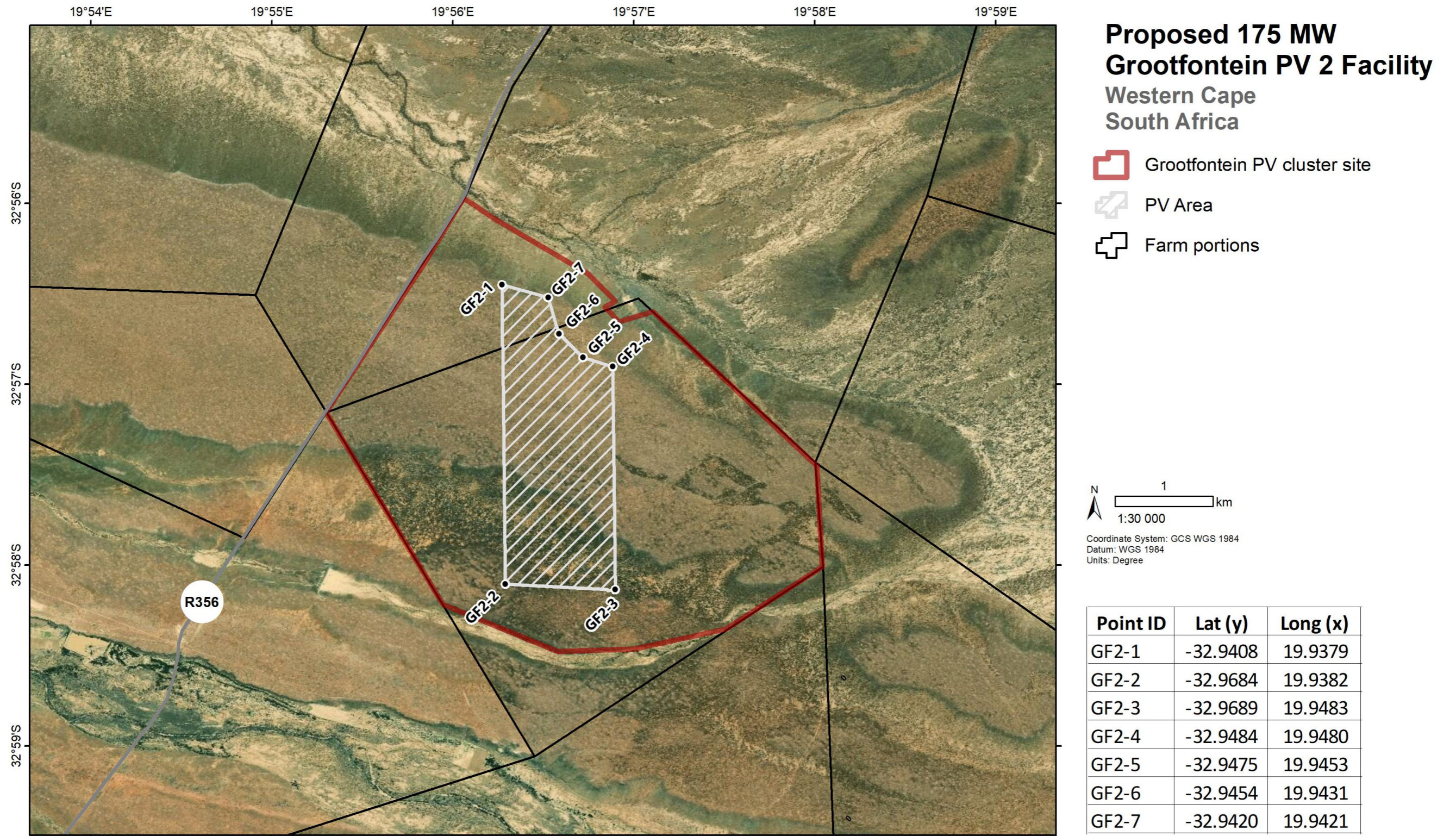
APPENDICES

Appendix A.6: Approximate Project Co-ordinate Map – Grootfontein PV 1



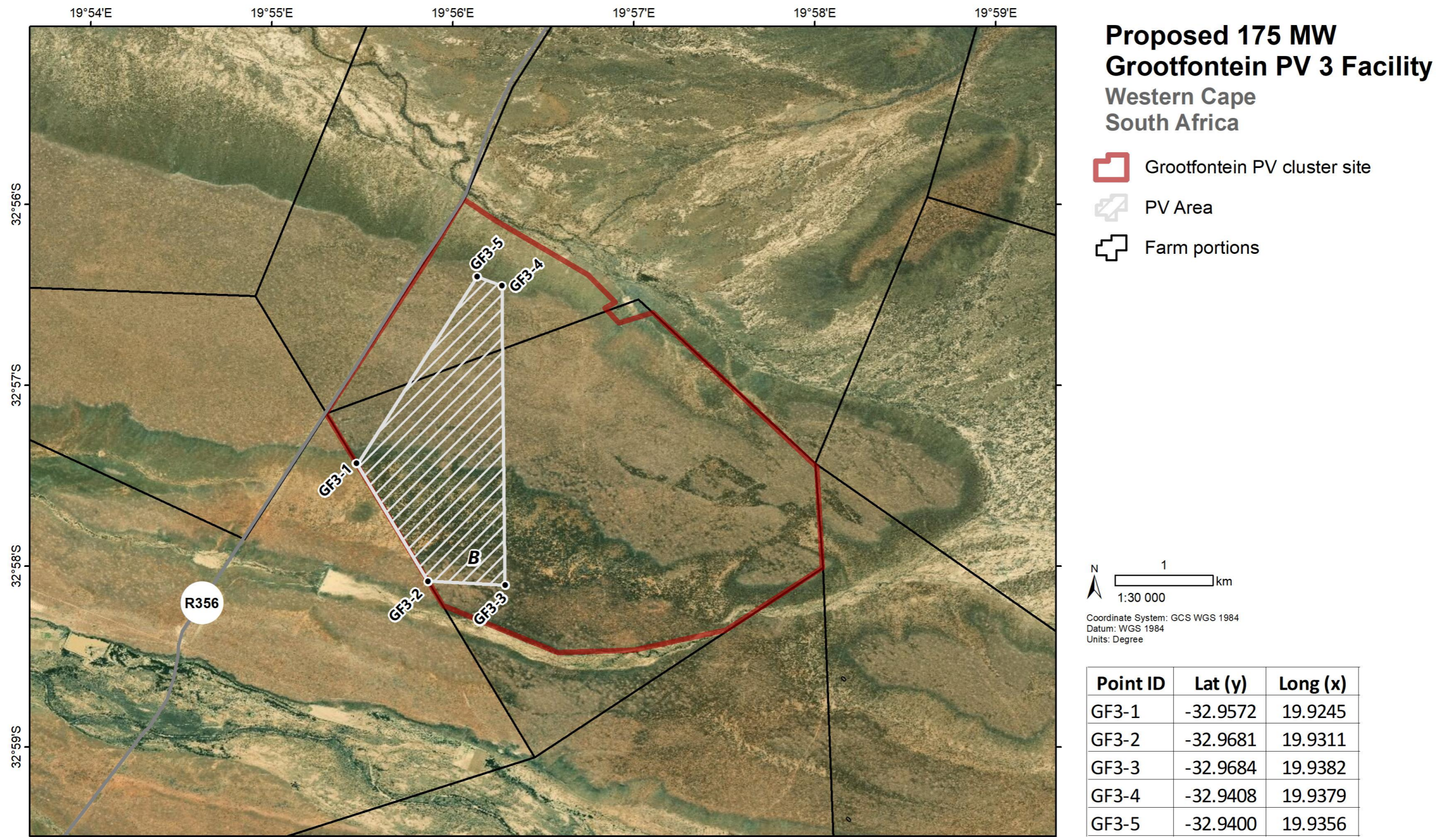
Service Layer Credits: Source: Esri, DigitalGlobe, GeoEye, Earthstar Geographics, CNES/Airbus DS, USDA, USGS, AeroGRID, IGN, and the GIS User Community

Appendix A.7: Approximate Project Co-ordinate Map – Grootfontein PV 2



Service Layer Credits: Source: Esri, DigitalGlobe, GeoEye, Earthstar Geographics, CNES/Airbus DS, USDA, USGS, AeroGRID, IGN, and the GIS User Community

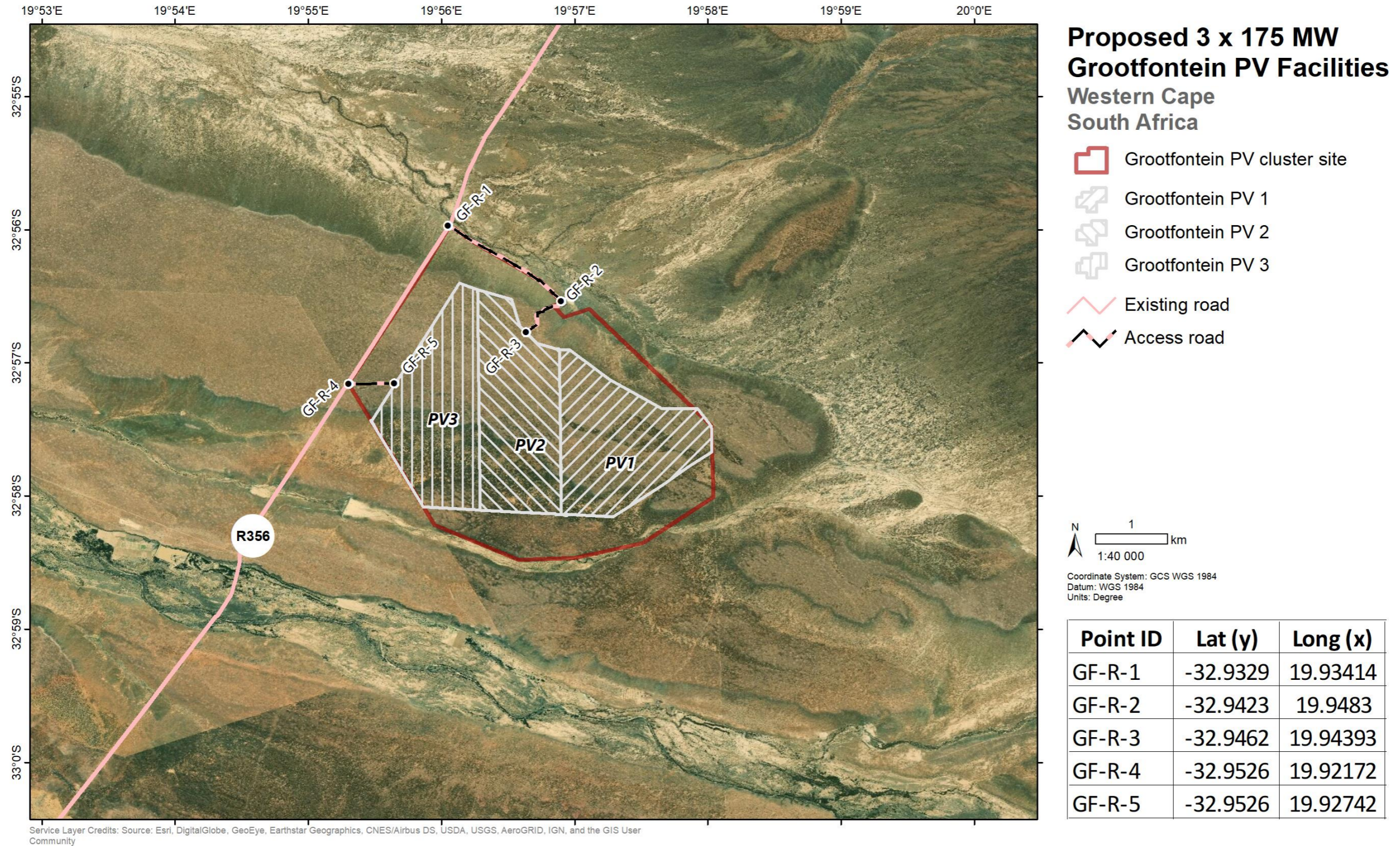
Appendix A.8: Approximate Project Co-ordinate Map – Grootfontein PV 3



Service Layer Credits: Source: Esri, DigitalGlobe, GeoEye, Earthstar Geographics, CNES/Airbus DS, USDA, USGS, AeroGRID, IGN, and the GIS User Community

APPENDICES

Appendix A.9: Approximate Project Co-ordinate Map – Access Roads for Grootfontein PV 1, Grootfontein PV 2 and Grootfontein PV 3



APPENDICES

DRAFT BASIC ASSESSMENT REPORT: Basic Assessment for the Proposed Development of three 175 MW Solar Photovoltaic Facilities and associated Infrastructure (i.e. Grootfontein PV 1, Grootfontein PV 2, and Grootfontein PV 3), near Touws River, Western Cape

Appendix A.10: List of Co-ordinates for Grootfontein PV 1, Grootfontein PV 2 and Grootfontein PV 3

Grootfontein PV 1

Point	DD		DMS	
	Latitude (Y)	Longitude (X)	Latitude (Y)	Longitude (X)
GF1-1	-32.948374	19.948049	32° 56' 54.147" S	19° 56' 52.978" E
GF1-2	-32.968929	19.948288	32° 58' 8.146" S	19° 56' 53.836" E
GF1-3	-32.969240	19.954781	32° 58' 9.265" S	19° 57' 17.210" E
GF1-4	-32.961119	19.967145	32° 57' 40.029" S	19° 58' 1.721" E
GF1-5	-32.957526	19.966741	32° 57' 27.092" S	19° 58' 0.266" E
GF1-6	-32.95574	19.964849	32° 57' 20.664" S	19° 57' 53.455" E
GF1-7	-32.955762	19.960918	32° 57' 20.742" S	19° 57' 39.305" E
GF1-8	-32.948399	19.94935	32° 56' 54.238" S	19° 56' 57.660" E

Grootfontein PV 2

Point	DD		DMS	
	Latitude (Y)	Longitude (X)	Latitude (Y)	Longitude (X)
GF2-1	-32.940838	19.937853	32° 56' 27.017" S	19° 56' 16.272" E
GF2-2	-32.968417	19.938169	32° 58' 6.300" S	19° 56' 17.408" E
GF2-3	-32.968929	19.948288	32° 58' 8.146" S	19° 56' 53.836" E
GF2-4	-32.948374	19.948049	32° 56' 54.147" S	19° 56' 52.978" E
GF2-5	-32.947539	19.945324	32° 56' 51.142" S	19° 56' 43.167" E
GF2-6	-32.945363	19.943094	32° 56' 43.309" S	19° 56' 35.137" E
GF2-7	-32.942023	19.942102	32° 56' 31.284" S	19° 56' 31.566" E

Grootfontein PV 3

Point	DD		DMS	
	Latitude (Y)	Longitude (X)	Latitude (Y)	Longitude (X)
GF3-1	-32.957207	19.924465	32° 57' 25.946" S	19° 55' 28.073" E
GF3-2	-32.968067	19.931061	32° 58' 5.040" S	19° 55' 51.820" E
GF3-3	-32.968417	19.938169	32° 58' 6.300" S	19° 56' 17.408" E
GF3-4	-32.940838	19.937853	32° 56' 27.017" S	19° 56' 16.272" E
GF3-5	-32.940004	19.935563	32° 56' 24.013" S	19° 56' 8.026" E

APPENDICES

DRAFT BASIC ASSESSMENT REPORT: Basic Assessment for the Proposed Development of three 175 MW Solar Photovoltaic Facilities and associated Infrastructure (i.e. Grootfontein PV 1, Grootfontein PV 2, and Grootfontein PV 3), near Touws River, Western Cape

Access Road for Grootfontein PV 1, Grootfontein PV 2 and Grootfontein PV 3

Point	DD		DMS	
	Latitude (Y)	Longitude (X)	Latitude (Y)	Longitude (X)
GF-R-1	-32.93287087	19.93414289	32° 55' 58.335" S	19° 56' 2.914" E
GF-R-2	-32.9423025	19.94830191	32° 56' 32.289" S	19° 56' 53.887" E
GF-R-3	-32.94618053	19.94393123	32° 56' 46.250" S	19° 56' 38.152" E
GF-R-4	-32.9526221	19.92172417	32° 57' 9.440" S	19° 55' 18.207" E
GF-R-5	-32.95257386	19.92741582	32° 57' 9.266" S	19° 55' 38.697" E