

Basic Assessment for the Proposed Development of four 175 MW Solar Photovoltaic Facilities and associated Infrastructure (i.e. Hoek Doornen PV 1, Hoek Doornen PV 2, Hoek Doornen PV 3, and Hoek Doornen PV 4), near Touws River, Western Cape

# APPENDICES

- Appendix A: Maps
- Appendix B: Facility Illustrations
- Appendix C: Specialist Reports
  - Appendix C.1: Agriculture Compliance Statement
  - Appendix C.2: Visual Impact Assessment
  - Appendix C.3: Heritage Impact Assessment (Archaeology, Cultural Landscape and Palaeontology)
  - Appendix C.4: Terrestrial Biodiversity and Species
  - Appendix C.5: Aquatic Biodiversity and Species
  - Appendix C.6: Avifauna Assessment
  - Appendix C.7: Socio-Economic Assessment
  - Appendix C.8: Geohydrology Assessment
  - Appendix C.9: Civil Aviation Site Sensitivity Verification
  - Appendix C.10: Defence Site Sensitivity Verification
- Appendix D: Public Participation
  - Appendix D.1: Public Participation Plan
  - Appendix D.2: Submission of the Public Participation Plan to the DEFF
  - Appendix D.3: DEFF Approval of the Public Participation Plan
  - Appendix D.4: Copies and Proof of Placement of Site Notice Boards
  - Appendix D.5: Copies of the content of the Newspaper Advertisements
  - Appendix D.6: I&AP Database
  - Appendix D.7: Pre-Application Stakeholder Correspondence
  - Appendix D.8: Proof of Submission of the Notification of Intent to Develop (NID) to Heritage Western Cape (HWC)
  - Appendix D.9: Acknowledgement of Receipt of the Notification of Intent to Develop (NID) from Heritage Western Cape (HWC)
  - Appendix D.10: Proof of Consultation with the Witzenberg Local Municipality and Heritage Conservation Bodies for the Heritage Impact Assessment
- Appendix E: EAP Details, Expertise and Declaration of Interest
- Appendix F: Specialist Declarations of Interest
- Appendix G: Environmental Management Programme (EMPr)
  - Appendix G.1: Environmental Management Programme (EMPr) for Hoek Doornen PV 1, Hoek Doornen PV 2, Hoek Doornen PV 3, and Hoek Doornen PV 4 Projects
  - Appendix G.2: Environmental Management Programme (EMPr) for the On-Site Substations for the Hoek Doornen PV 1, Hoek Doornen PV 2, Hoek Doornen PV 3, and Hoek Doornen PV 4 Projects
- Appendix H: Pre-Consultation with the Competent Authority
  - Appendix H.1: Pre-Application Meeting Request Form
  - Appendix H.2: Pre-Application Meeting Presentation
  - Appendix H.3: Pre-Application Meeting Notes
  - Appendix H.4: Correspondence from the DEFF with Approval of the Pre-Application Meeting Notes
  - Appendix H.5: Correspondence from the DEFF with Approval of the Combination and Multiple EA Request
- Appendix I: Additional Information



Basic Assessment for the Proposed Development of four 175 MW Solar Photovoltaic Facilities and associated Infrastructure (i.e. Hoek Doornen PV 1, Hoek Doornen PV 2, Hoek Doornen PV 3, and Hoek Doornen PV 4), near Touws River, Western Cape



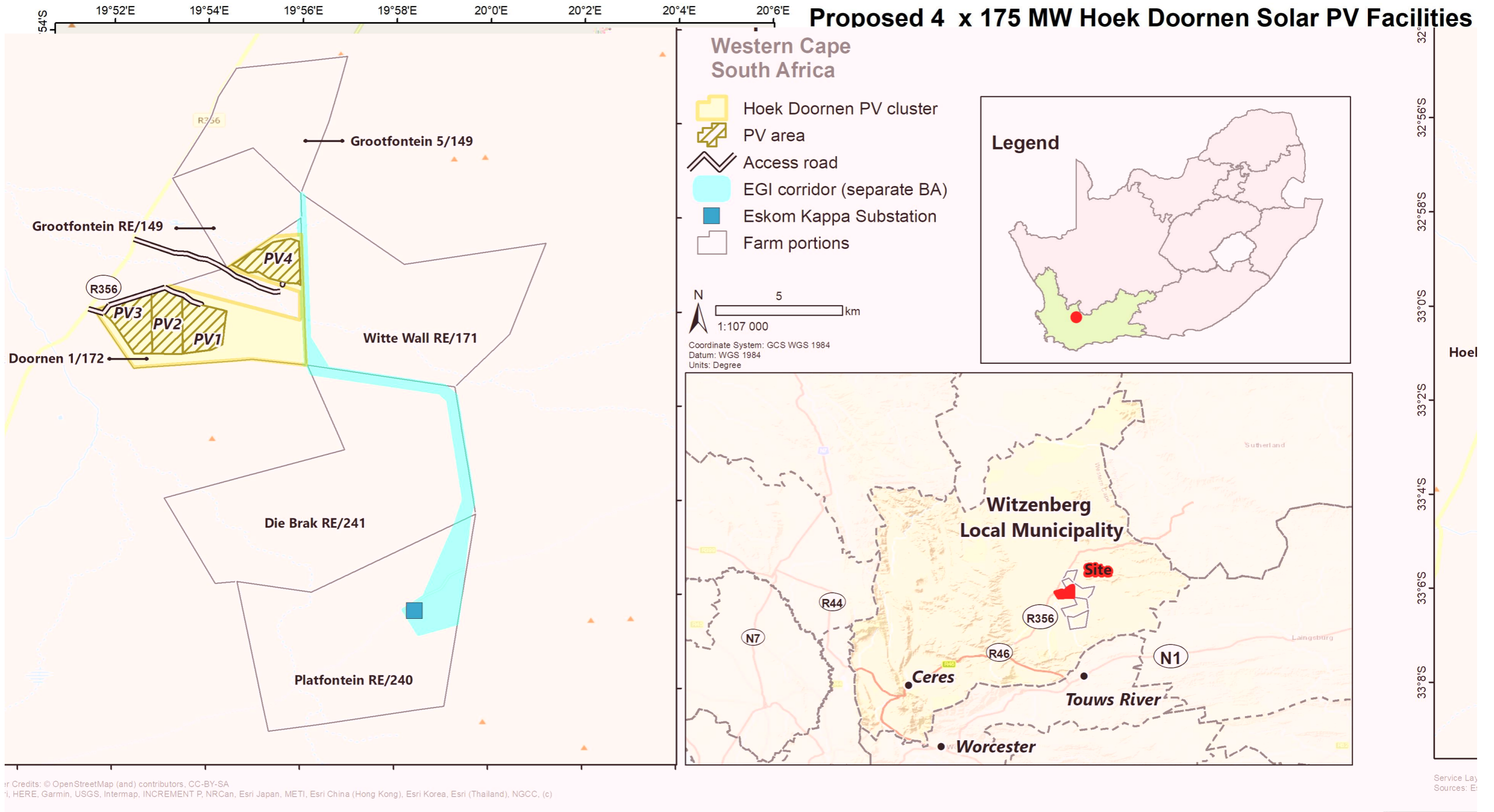
# APPENDIX A

# Maps

APPENDICES

DRAFT BASIC ASSESSMENT REPORT: Basic Assessment for the Proposed Development of four 175 MW Solar Photovoltaic Facilities and associated Infrastructure (i.e. Hoek Doornen PV 1, Hoek Doornen PV 2, Hoek Doornen PV 3, and Hoek Doornen PV 4), near Touws River, Western Cape

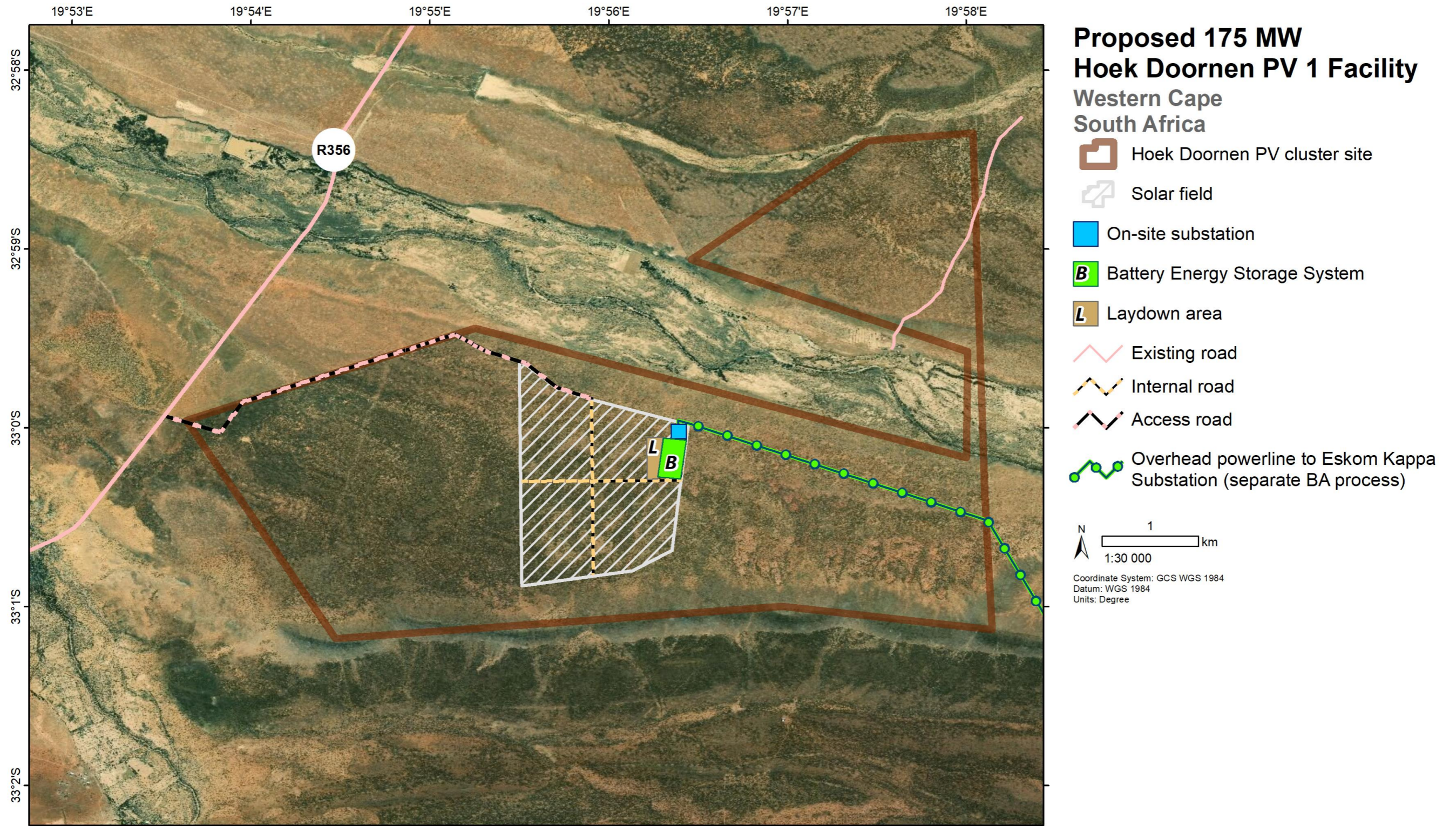
Appendix A.1: Locality Map – Hoek Doornen PV 1, Hoek Doornen PV 2, Hoek Doornen PV 3, and Hoek Doornen PV 4





APPENDICES

Appendix A.2: Layout Map – Hoek Doornen PV 1

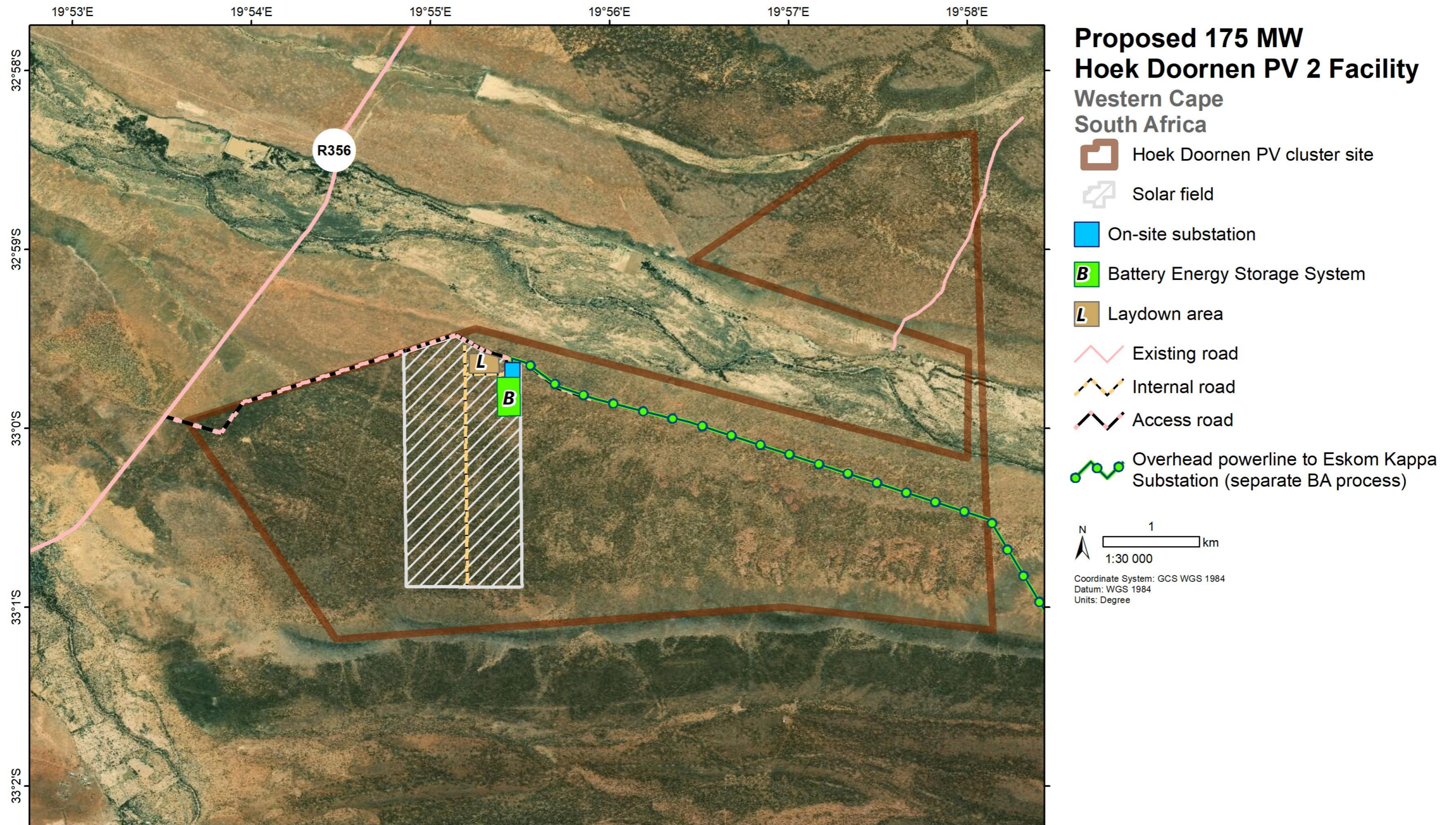


Service Layer Credits: Source: Esri, DigitalGlobe, GeoEye, Earthstar Geographics, CNES/Airbus DS, USDA, USGS, AeroGRID, IGN, and the GIS User Community



APPENDICES

Appendix A.3: Layout Map – Hoek Doornen PV 2



**Proposed 175 MW  
Hoek Doornen PV 2 Facility  
Western Cape  
South Africa**

- Hoek Doornen PV cluster site
- Solar field
- On-site substation
- Battery Energy Storage System
- Laydown area
- Existing road
- Internal road
- Access road
- Overhead powerline to Eskom Kappa Substation (separate BA process)

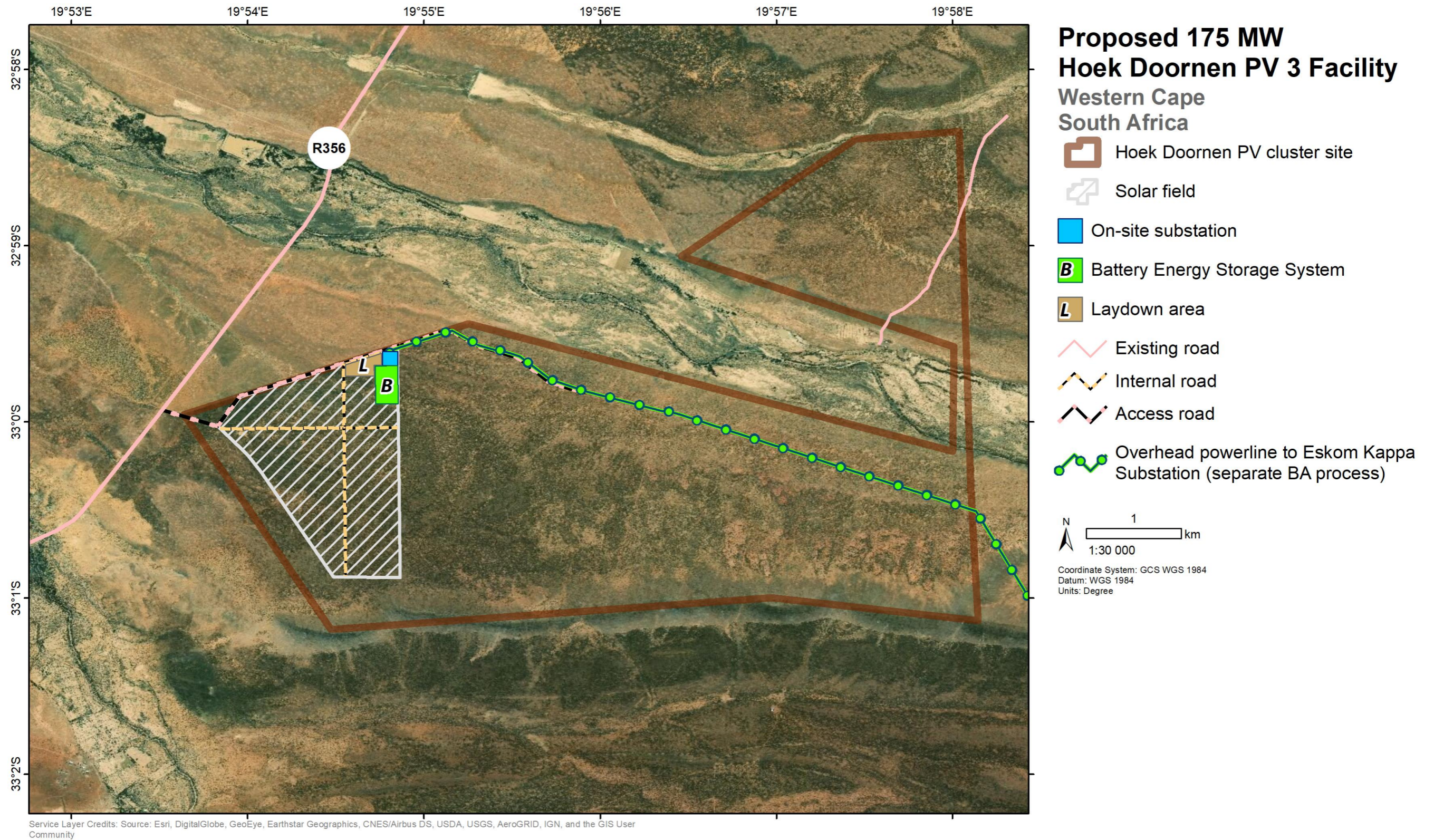
N  
1 km  
1:30 000  
Coordinate System: GCS WGS 1984  
Datum: WGS 1984  
Units: Degree

Service Layer Credits: Source: Esri, DigitalGlobe, GeoEye, Earthstar Geographics, CNES/Airbus DS, USDA, USGS, AeroGRID, IGN, and the GIS User Community



APPENDICES

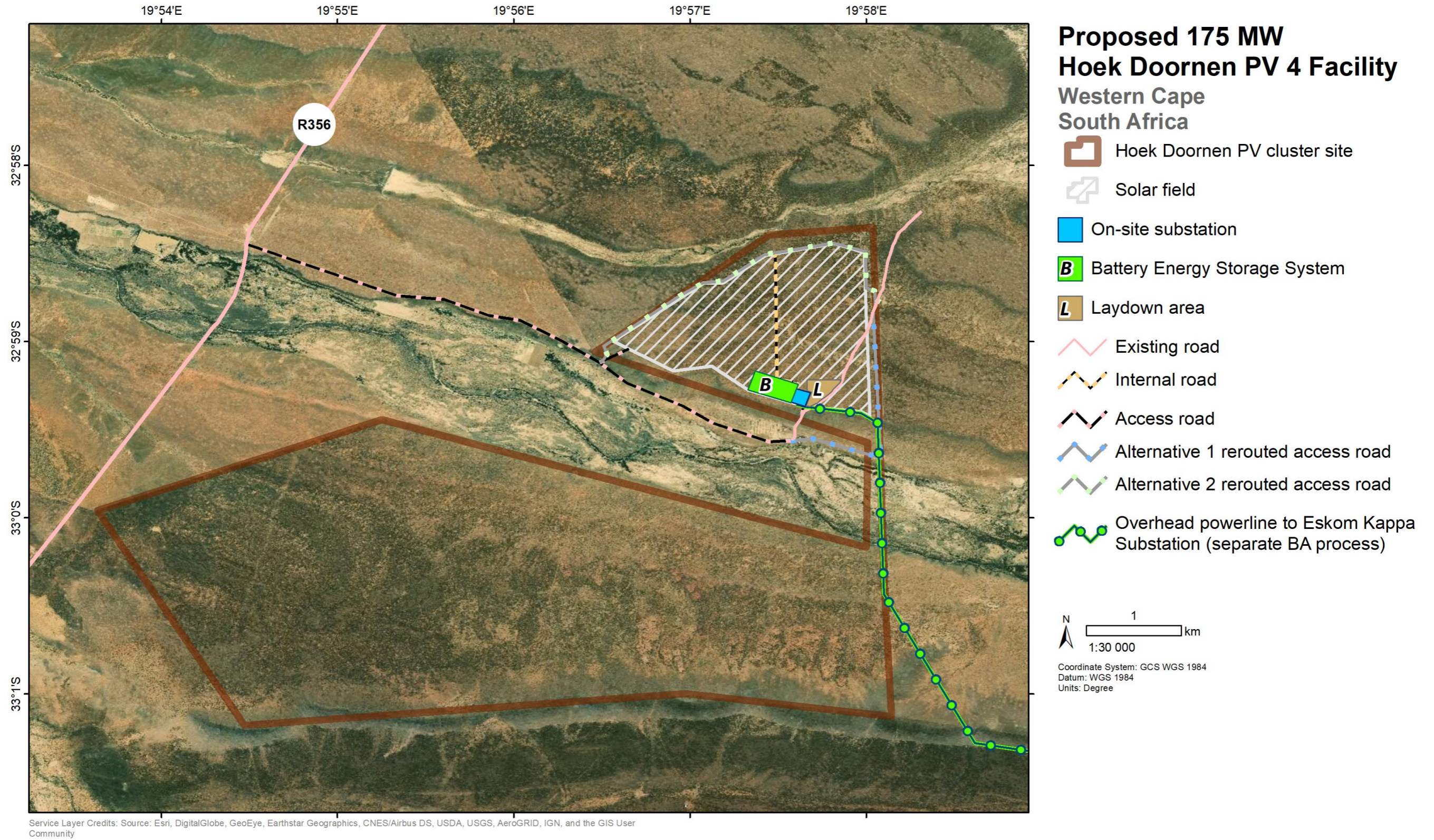
Appendix A.4: Layout Map – Hoek Doornen PV 3





APPENDICES

Appendix A.5: Layout Map – Hoek Doornen PV 4

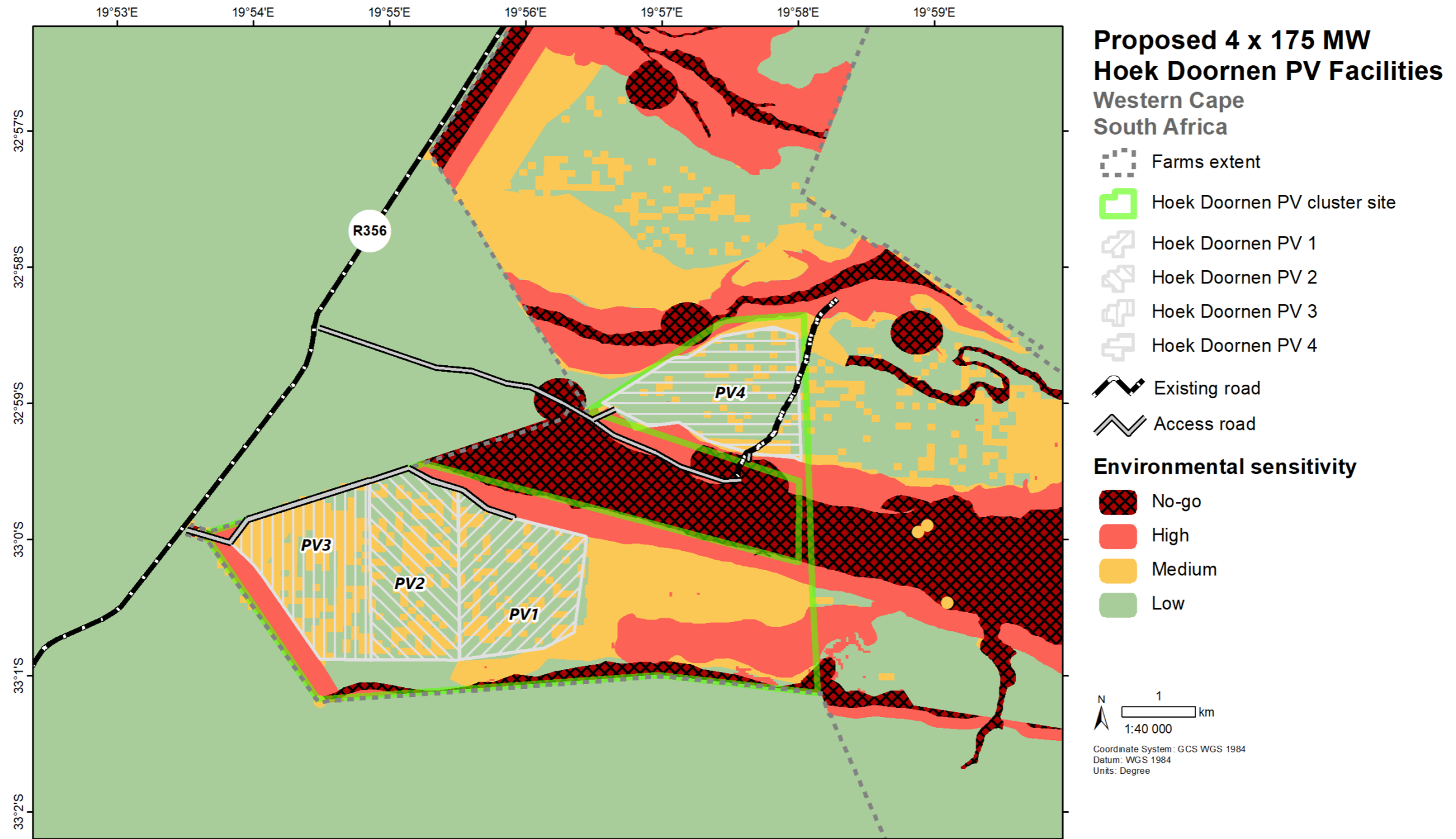




APPENDICES

DRAFT BASIC ASSESSMENT REPORT: Basic Assessment for the Proposed Development of four 175 MW Solar Photovoltaic Facilities and associated Infrastructure (i.e. Hoek Doornen PV 1, Hoek Doornen PV 2, Hoek Doornen PV 3, and Hoek Doornen PV 4), near Touws River, Western Cape

Appendix A.6: Sensitivity Map

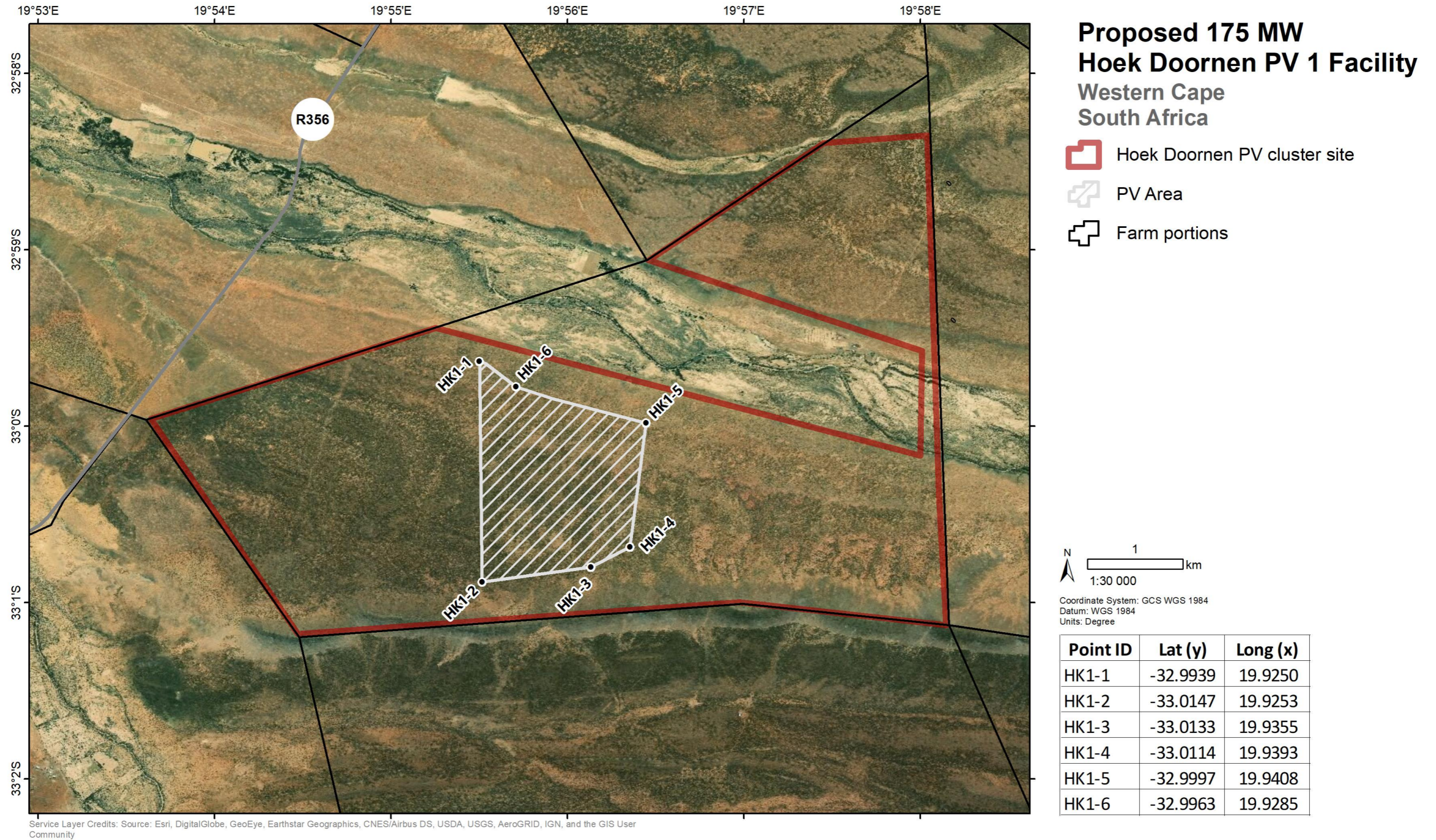




APPENDICES

DRAFT BASIC ASSESSMENT REPORT: Basic Assessment for the Proposed Development of four 175 MW Solar Photovoltaic Facilities and associated Infrastructure (i.e. Hoek Doornen PV 1, Hoek Doornen PV 2, Hoek Doornen PV 3, and Hoek Doornen PV 4), near Touws River, Western Cape

Appendix A.7: Approximate Project Co-ordinate Map – Hoek Doornen PV 1

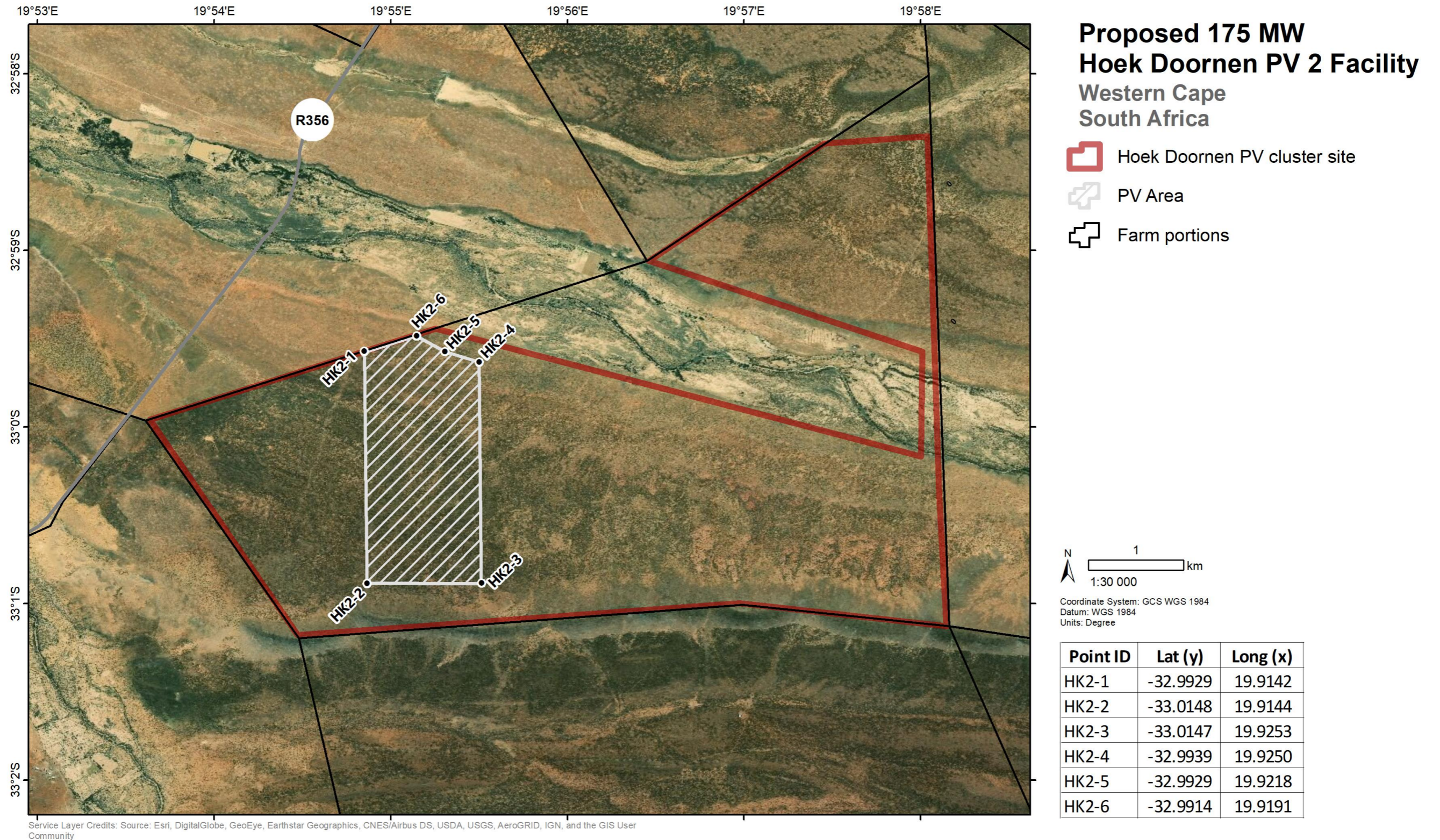




APPENDICES

DRAFT BASIC ASSESSMENT REPORT: Basic Assessment for the Proposed Development of four 175 MW Solar Photovoltaic Facilities and associated Infrastructure (i.e. Hoek Doornen PV 1, Hoek Doornen PV 2, Hoek Doornen PV 3, and Hoek Doornen PV 4), near Touws River, Western Cape

Appendix A.8: Approximate Project Co-ordinate Map – Hoek Doornen PV 2

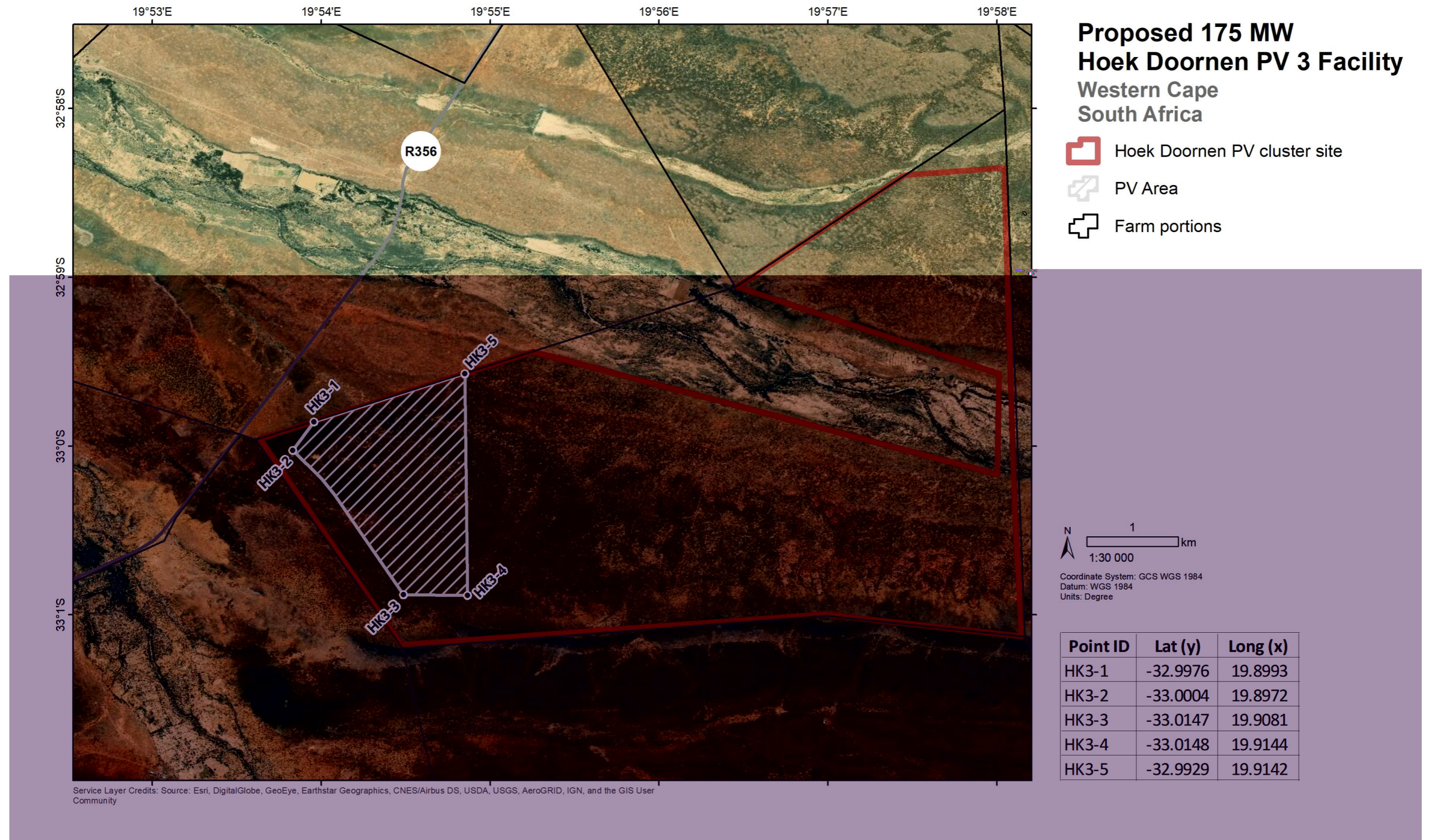




APPENDICES

DRAFT BASIC ASSESSMENT REPORT: Basic Assessment for the Proposed Development of four 175 MW Solar Photovoltaic Facilities and associated Infrastructure (i.e. Hoek Doornen PV 1, Hoek Doornen PV 2, Hoek Doornen PV 3, and Hoek Doornen PV 4), near Touws River, Western Cape

Appendix A.9: Approximate Project Co-ordinate Map – Hoek Doornen PV 3

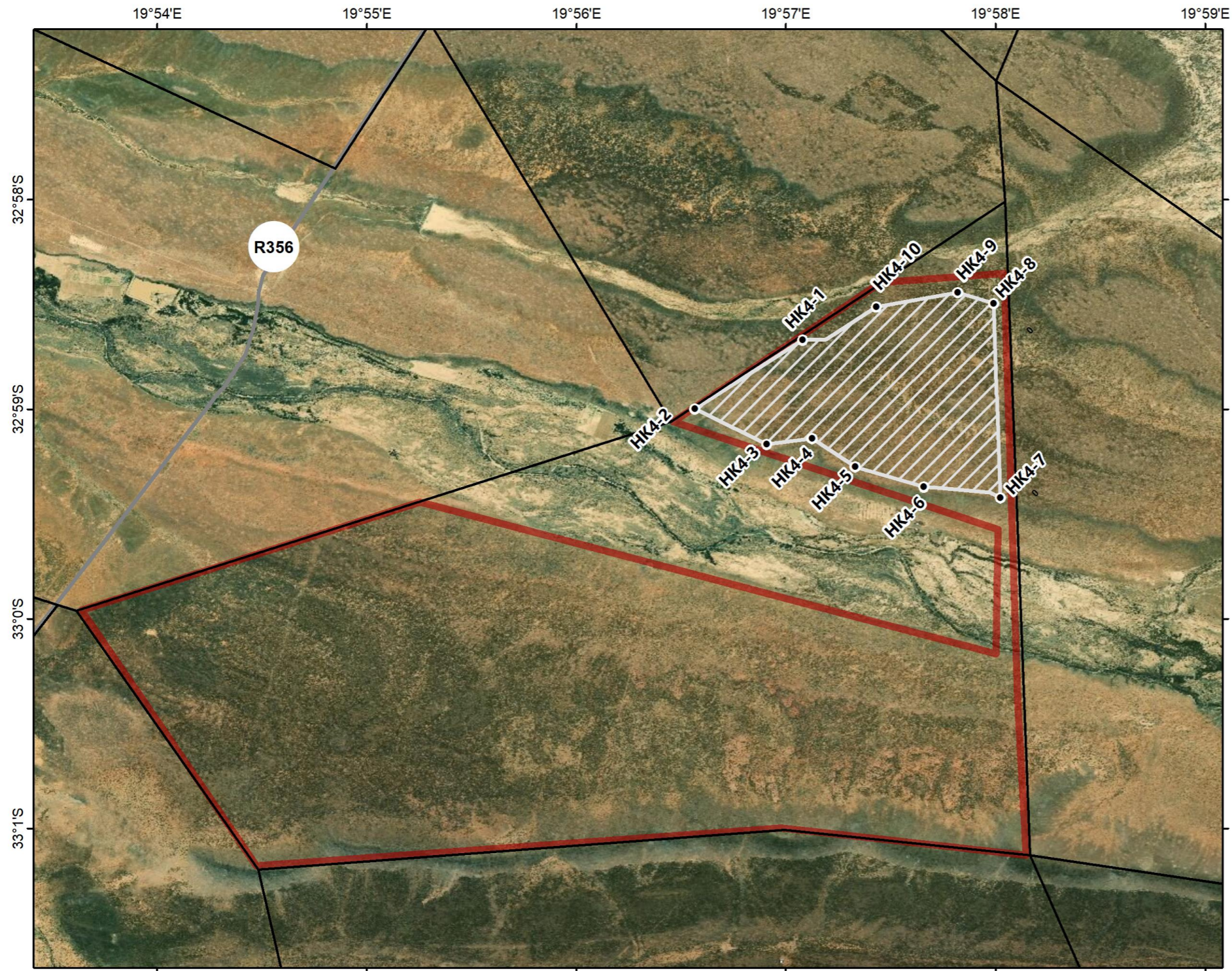







APPENDICES

DRAFT BASIC ASSESSMENT REPORT: Basic Assessment for the Proposed Development of four 175 MW Solar Photovoltaic Facilities and associated Infrastructure (i.e. Hoek Doornen PV 1, Hoek Doornen PV 2, Hoek Doornen PV 3, and Hoek Doornen PV 4), near Touws River, Western Cape

Appendix A.10: Approximate Project Co-ordinate Map – Hoek Doornen PV 4



**Proposed 175 MW  
Hoek Doornen PV 4 Facility**  
Western Cape  
South Africa

-  Hoek Doornen PV cluster site
-  PV Area
-  Farm portions

N  
1 km  
1:30 000  
Coordinate System: GCS WGS 1984  
Datum: WGS 1984  
Units: Degree

Point ID	Lat (y)	Long (x)
HK4-1	-32.9778	19.9513
HK4-2	-32.9833	19.9427
HK4-3	-32.9861	19.9484
HK4-4	-32.9857	19.9521
HK4-5	-32.9879	19.9555
HK4-6	-32.9895	19.9609
HK4-7	-32.9904	19.9670
HK4-8	-32.9749	19.9665
HK4-9	-32.9740	19.9636
HK4-10	-32.9752	19.9572

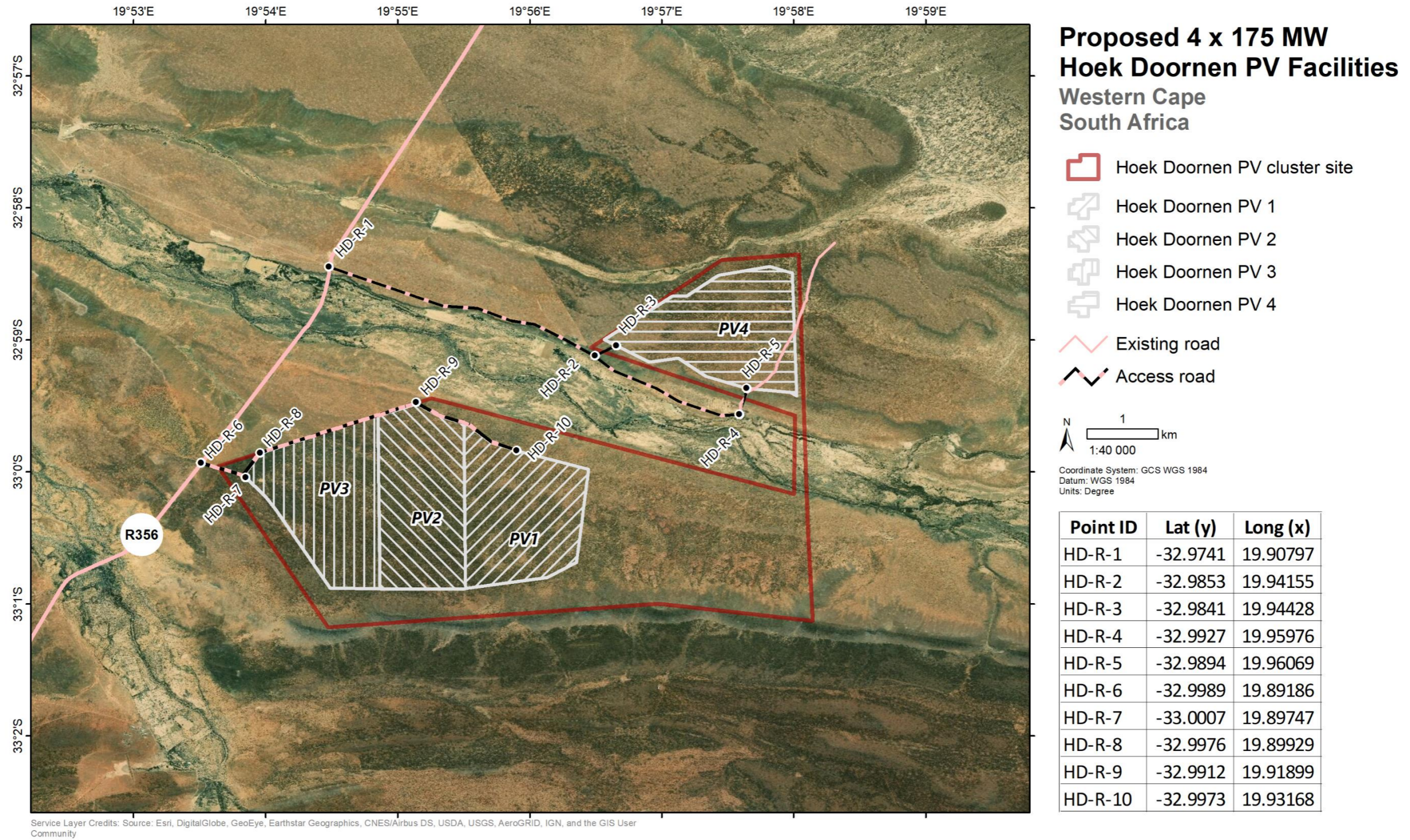
Service Layer Credits: Source: Esri, DigitalGlobe, GeoEye, Earthstar Geographics, CNES/Airbus DS, USDA, USGS, AeroGRID, IGN, and the GIS User Community



APPENDICES

DRAFT BASIC ASSESSMENT REPORT: Basic Assessment for the Proposed Development of four 175 MW Solar Photovoltaic Facilities and associated Infrastructure (i.e. Hoek Doornen PV 1, Hoek Doornen PV 2, Hoek Doornen PV 3, and Hoek Doornen PV 4), near Touws River, Western Cape

Appendix A.11: Approximate Project Co-ordinate Map – Access Roads for Hoek Doornen PV 1, Hoek Doornen PV 2, Hoek Doornen PV 3 and Hoek Doornen PV 4





## APPENDICES

**DRAFT BASIC ASSESSMENT REPORT:** Basic Assessment for the Proposed Development of four 175 MW Solar Photovoltaic Facilities and associated Infrastructure (i.e. Hoek Doornen PV 1, Hoek Doornen PV 2, Hoek Doornen PV 3, and Hoek Doornen PV 4), near Touws River, Western Cape

---

### Appendix A.12: List of Co-ordinates for Hoek Doornen PV 1, Hoek Doornen PV 2 and Hoek Doornen PV 3

---

#### Hoek Doornen PV 1

Point	DD		DMS	
	Latitude (Y)	Longitude (X)	Latitude (Y)	Longitude (X)
HK1-1	-32.993875	19.92502	32° 59' 37.951" S	19° 55' 30.072" E
HK1-2	-33.014731	19.925253	33° 0' 53.031" S	19° 55' 30.910" E
HK1-3	-33.013318	19.935544	33° 0' 47.946" S	19° 56' 7.959" E
HK1-4	-33.011431	19.939251	33° 0' 41.151" S	19° 56' 21.304" E
HK1-5	-32.99969	19.940769	32° 59' 58.882" S	19° 56' 26.767" E
HK1-6	-32.996275	19.928481	32° 59' 46.591" S	19° 55' 42.532" E

#### Hoek Doornen PV 2

Point	DD		DMS	
	Latitude (Y)	Longitude (X)	Latitude (Y)	Longitude (X)
HK2-1	-32.992856	19.914177	32° 59' 34.281" S	19° 54' 51.037" E
HK2-2	-33.014754	19.914439	33° 0' 53.116" S	19° 54' 51.980" E
HK2-3	-33.014731	19.925253	33° 0' 53.031" S	19° 55' 30.910" E
HK2-4	-32.993875	19.92502	32° 59' 37.951" S	19° 55' 30.072" E
HK2-5	-32.992873	19.921782	32° 59' 34.341" S	19° 55' 18.416" E
HK2-6	-32.991408	19.919105	32° 59' 29.070" S	19° 55' 8.777" E

#### Hoek Doornen PV 3

Point	DD		DMS	
	Latitude (Y)	Longitude (X)	Latitude (Y)	Longitude (X)
HK3-1	-32.997636	19.899304	32° 59' 51.489" S	19° 53' 57.496" E
HK3-2	-33.000430	19.897201	33° 0' 1.548" S	19° 53' 49.922" E
HK3-3	-33.014665	19.908126	33° 0' 52.793" S	19° 54' 29.254" E
HK3-4	-33.014754	19.914439	33° 0' 53.116" S	19° 54' 51.980" E
HK3-5	-32.992856	19.914177	32° 59' 34.281" S	19° 54' 51.037" E



## APPENDICES

**DRAFT BASIC ASSESSMENT REPORT:** Basic Assessment for the Proposed Development of four 175 MW Solar Photovoltaic Facilities and associated Infrastructure (i.e. Hoek Doornen PV 1, Hoek Doornen PV 2, Hoek Doornen PV 3, and Hoek Doornen PV 4), near Touws River, Western Cape

---

### Hoek Doornen PV 4

Point	DD		DMS	
	Latitude (Y)	Longitude (X)	Latitude (Y)	Longitude (X)
HK4-1	-32.977804	19.951322	32° 58' 40.095" S	19° 57' 4.760" E
HK4-2	-32.98329	19.942739	32° 58' 59.843" S	19° 56' 33.860" E
HK4-3	-32.986124	19.948439	32° 59' 10.048" S	19° 56' 54.381" E
HK4-4	-32.985650	19.952085	32° 59' 8.338" S	19° 57' 7.507" E
HK4-5	-32.987885	19.955496	32° 59' 16.385" S	19° 57' 19.787" E
HK4-6	-32.989488	19.960925	32° 59' 22.157" S	19° 57' 39.330" E
HK4-7	-32.990386	19.967023	32° 59' 25.389" S	19° 58' 1.284" E
HK4-8	-32.974897	19.966493	32° 58' 29.630" S	19° 57' 59.375" E
HK4-9	-32.974039	19.96363	32° 58' 26.540" S	19° 57' 49.069" E
HK4-10	-32.975175	19.957164	32° 58' 30.630" S	19° 57' 25.791" E

### Access Road for Hoek Doornen PV 1, Hoek Doornen PV 2, Hoek Doornen PV 3, and Hoek Doornen PV 4

Point	DD		DMS	
	Latitude (Y)	Longitude (X)	Latitude (Y)	Longitude (X)
HD-R-1	-32.97411884	19.90797311	32° 58' 26.828" S	19° 54' 28.703" E
HD-R-2	-32.98532069	19.94155332	32° 59' 7.154" S	19° 56' 29.592" E
HD-R-3	-32.98405409	19.944276	32° 59' 2.595" S	19° 56' 39.394" E
HD-R-4	-32.9927231	19.95976497	32° 59' 33.803" S	19° 57' 35.154" E
HD-R-5	-32.98941903	19.9606887	32° 59' 21.909" S	19° 57' 38.479" E
HD-R-6	-32.99886428	19.89186278	32° 59' 55.911" S	19° 53' 30.706" E
HD-R-7	-33.00068929	19.89747003	33° 0' 2.481" S	19° 53' 50.892" E
HD-R-8	-32.99762116	19.89929006	32° 59' 51.436" S	19° 53' 57.444" E
HD-R-9	-32.99121874	19.91899376	32° 59' 28.387" S	19° 55' 8.378" E
HD-R-10	-32.99730892	19.93167747	32° 59' 50.312" S	19° 55' 54.039" E