

Basic Assessment for the Proposed Development of two 175 MW Solar Photovoltaic Facilities and associated Infrastructure (i.e. Witte Wall PV 1 and Witte Wall PV 2), near Touws River, Western Cape

APPENDICES

- Appendix A: Maps
- Appendix B: Facility Illustrations
- Appendix C: Specialist Reports
- Appendix C.1: Agriculture Compliance Statement
- Appendix C.2: Visual Impact Assessment
- Appendix C.3: Heritage Impact Assessment (Archaeology, Cultural Landscape and Palaeontology)
- Appendix C.4: Terrestrial Biodiversity and Species
- Appendix C.5: Aquatic Biodiversity and Species
- Appendix C.6: Avifauna Assessment
- Appendix C.7: Socio-Economic Assessment
- Appendix C.8: Geohydrology Assessment
- Appendix C.9: Civil Aviation Site Sensitivity Verification
- Appendix C.10: Defence Site Sensitivity Verification
- Appendix D: Public Participation
- Appendix D.1: Public Participation Plan
- Appendix D.2: Submission of the Public Participation Plan to the DEFF
- Appendix D.3: DEFF Approval of the Public Participation Plan
- Appendix D.4: Copies and Proof of Placement of Site Notice Boards
- Appendix D.5: Copies of the content of the Newspaper Advertisements
- Appendix D.6: I&AP Database
- Appendix D.7: Pre-Application Stakeholder Correspondence
- Appendix D.8: Proof of Submission of the Notification of Intent to Develop (NID) to Heritage Western Cape (HWC)
- Appendix D.9: Acknowledgement of Receipt of the Notification of Intent to Develop (NID) from Heritage Western Cape (HWC)
- Appendix D.10: Proof of Consultation with the Witzenberg Local Municipality and Heritage Conservation Bodies for the Heritage Impact Assessment
- Appendix E: EAP Details, Expertise and Declaration of Interest
- Appendix F: Specialist Declarations of Interest
- Appendix G: Environmental Management Programme (EMPr)
- Appendix G.1: Environmental Management Programme (EMPr) for Witte Wall PV 1 and Witte Wall PV 2 Projects
- Appendix G.2: Environmental Management Programme (EMPr) for the On-Site Substations for the Witte Wall PV 1 and Witte Wall PV 2 Projects
- Appendix H: Pre-Consultation with the Competent Authority
- Appendix H.1: Pre-Application Meeting Request Form
- Appendix H.2: Pre-Application Meeting Presentation
- Appendix H.3: Pre-Application Meeting Notes
- Appendix H.4: Correspondence from the DEFF with Approval of the Pre-Application Meeting Notes
- Appendix H.5: Correspondence from the DEFF with Approval of the Combination and Multiple EA Request
- Appendix I: Additional Information

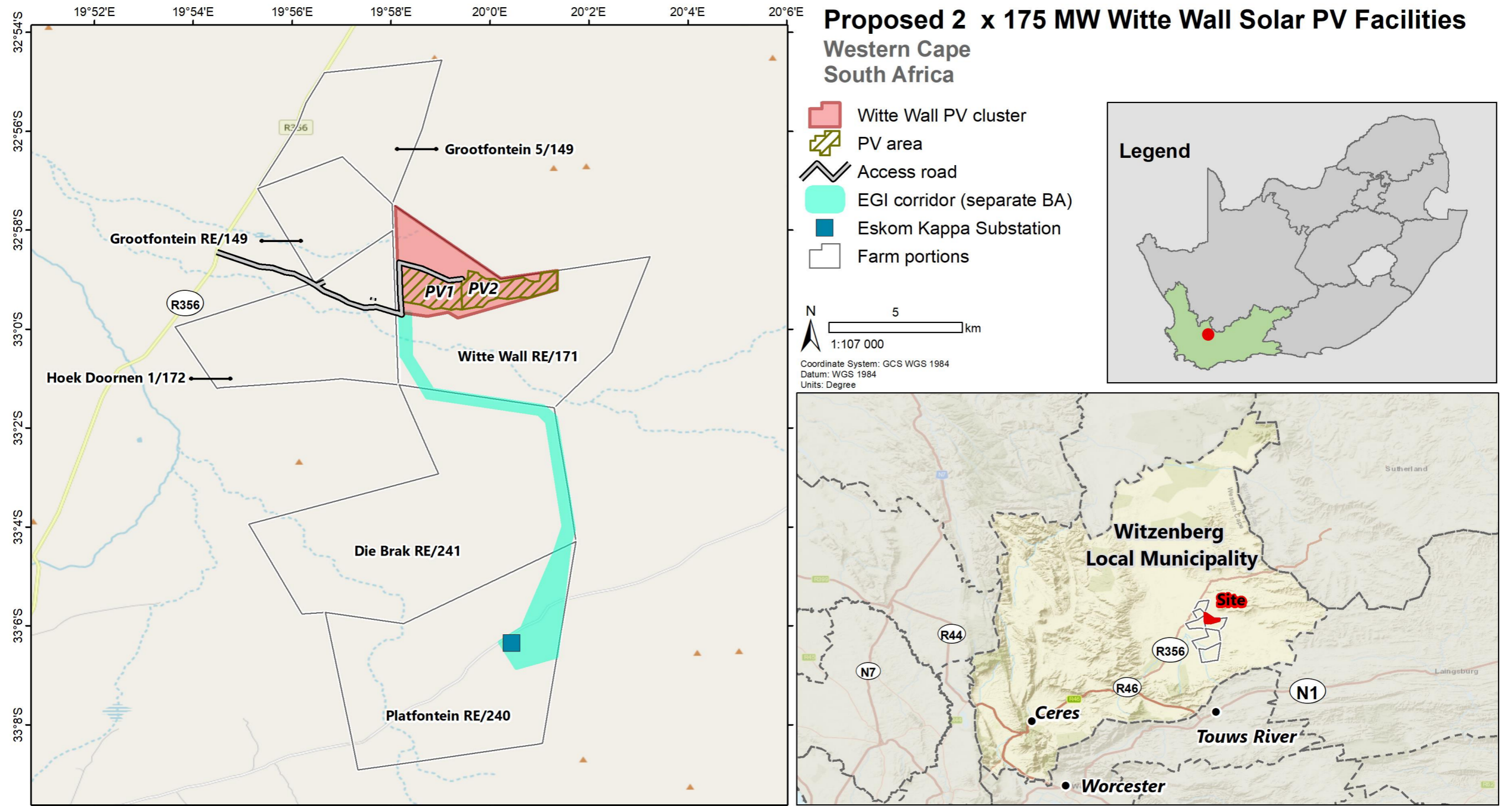
Basic Assessment for the Proposed Development of two
175 MW Solar Photovoltaic Facilities and associated
Infrastructure (i.e. Witte Wall PV 1 and Witte Wall PV 2),
near Touws River, Western Cape

The background of the page is a collage of diamond-shaped images. The top-left diamond shows a close-up of solar panels. The top-right diamond shows a large solar farm with rows of panels under a clear sky. The middle-left diamond shows a landscape with solar panels in the foreground and a mountain range in the distance. The middle-right diamond shows a close-up of solar panels. The bottom-left diamond shows a wide landscape of solar panels. The bottom-right diamond shows a close-up of solar panels. The text is overlaid on the blue background of the collage.

APPENDIX A

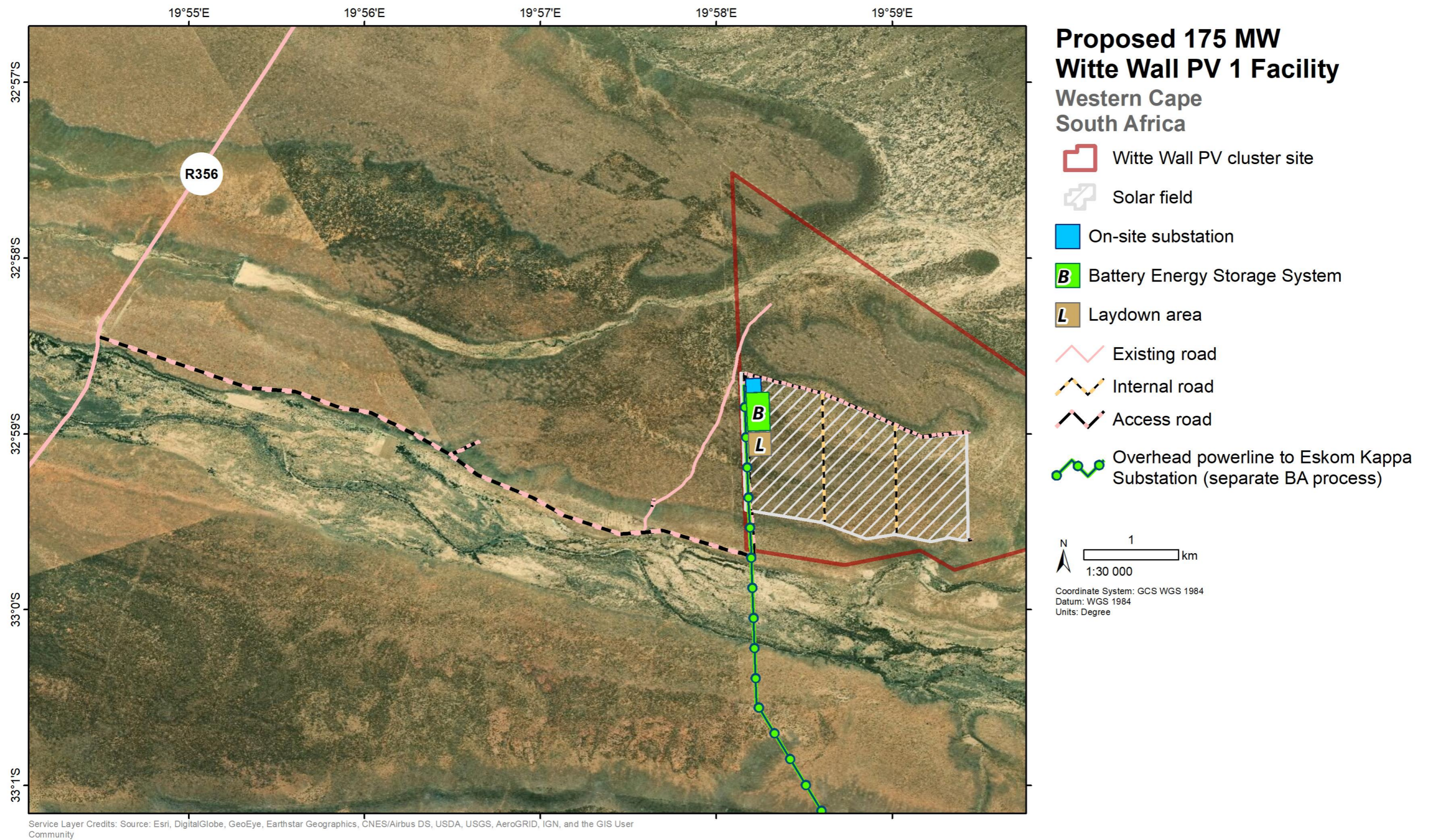
Maps

Appendix A.1: Locality Map – Witte Wall PV 1 and Witte Wall PV 2

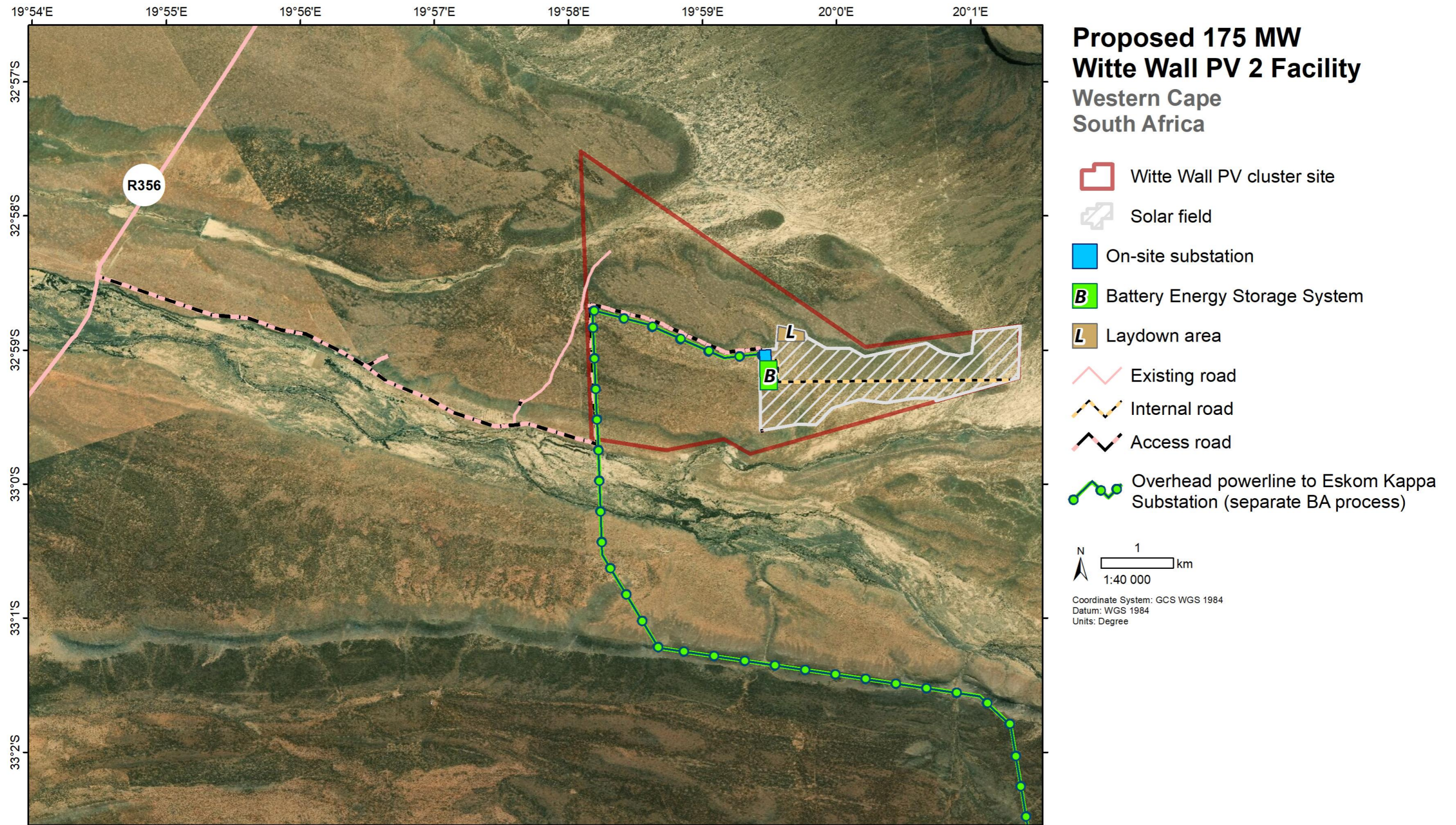


Service Layer Credits: © OpenStreetMap (and) contributors, CC-BY-SA
Sources: Esri, HERE, Garmin, USGS, Intermap, INCREMENT P, NRCan, Esri Japan, METI, Esri China (Hong Kong), Esri Korea, Esri (Thailand), NGCC, (c)










Appendix A.2: Layout Map – Witte Wall PV 1



Appendix A.3: Layout Map – Witte Wall PV 2



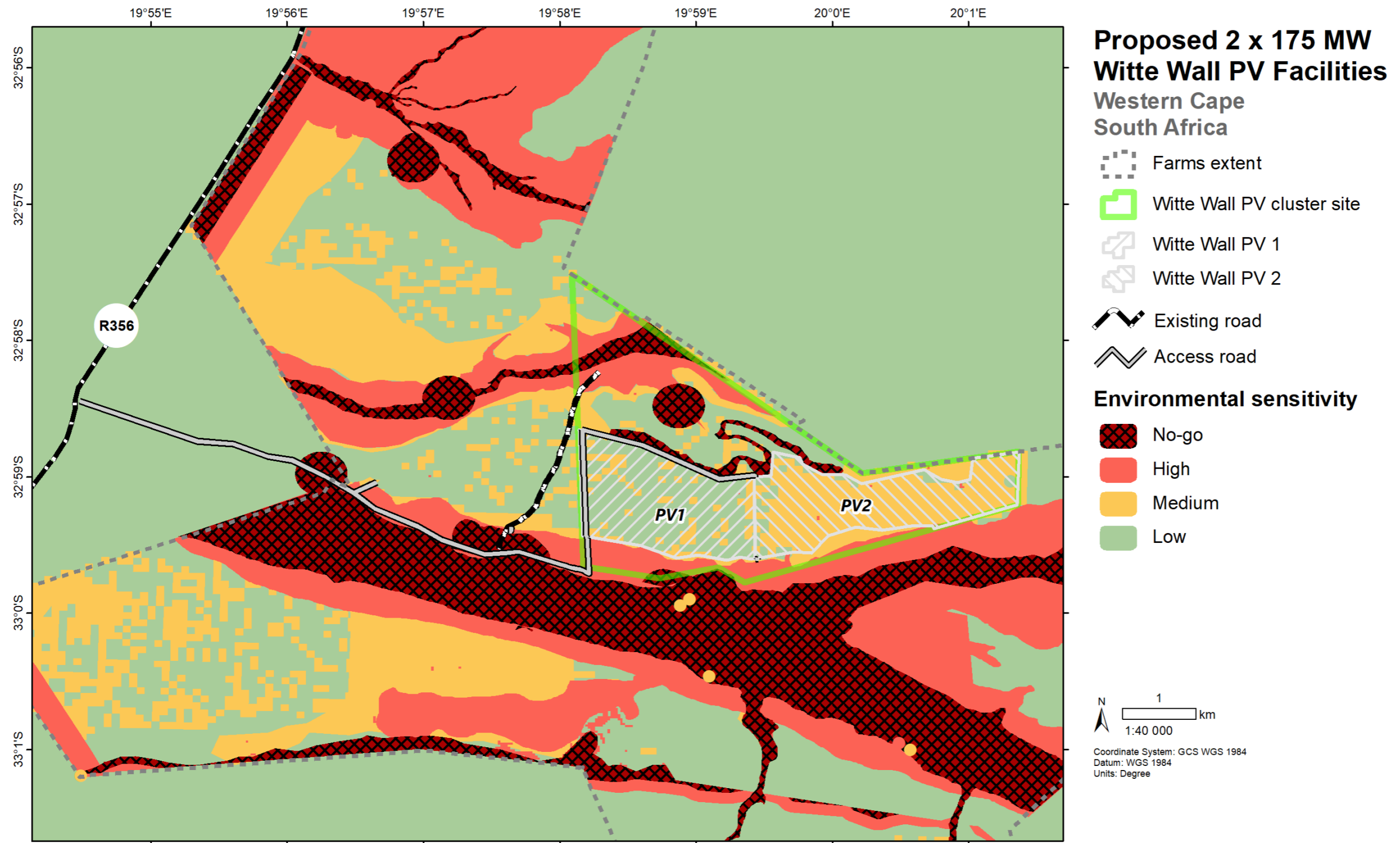
**Proposed 175 MW
Witte Wall PV 2 Facility
Western Cape
South Africa**

-  Witte Wall PV cluster site
-  Solar field
-  On-site substation
-  Battery Energy Storage System
-  Laydown area
-  Existing road
-  Internal road
-  Access road
-  Overhead powerline to Eskom Kappa Substation (separate BA process)

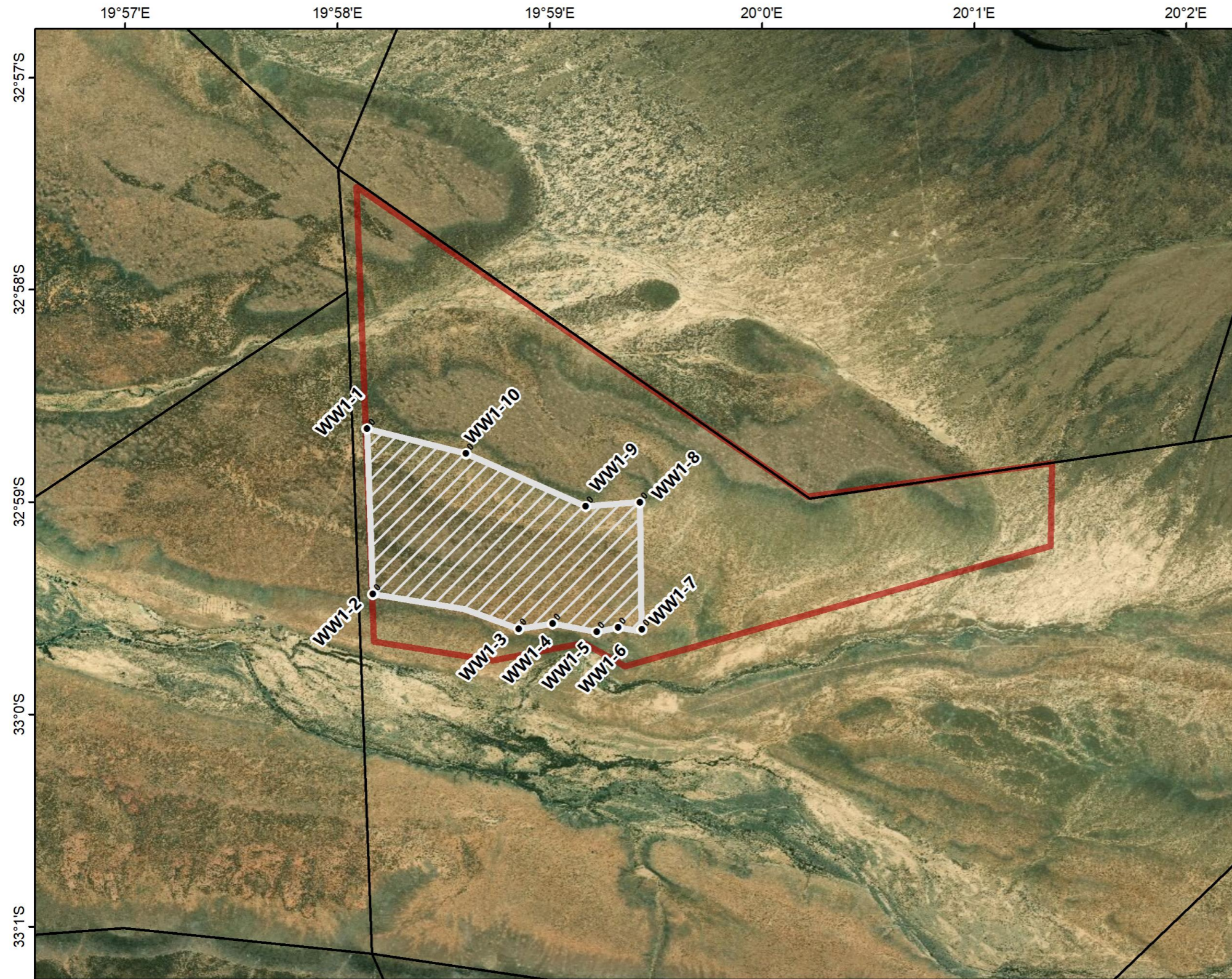
N
1 km
1:40 000
Coordinate System: GCS WGS 1984
Datum: WGS 1984
Units: Degree

Service Layer Credits: Source: Esri, DigitalGlobe, GeoEye, Earthstar Geographics, CNES/Airbus DS, USDA, USGS, AeroGRID, IGN, and the GIS User Community




Appendix A.4: Sensitivity Map

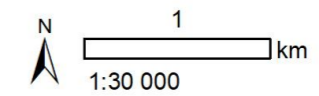


Appendix A.5: Approximate Project Co-ordinate Map – Witte Wall PV 1



**Proposed 175 MW
Witte Wall PV 1 Facility**
Western Cape
South Africa

-  Witte Wall PV cluster site
-  PV Area
-  Farm portions

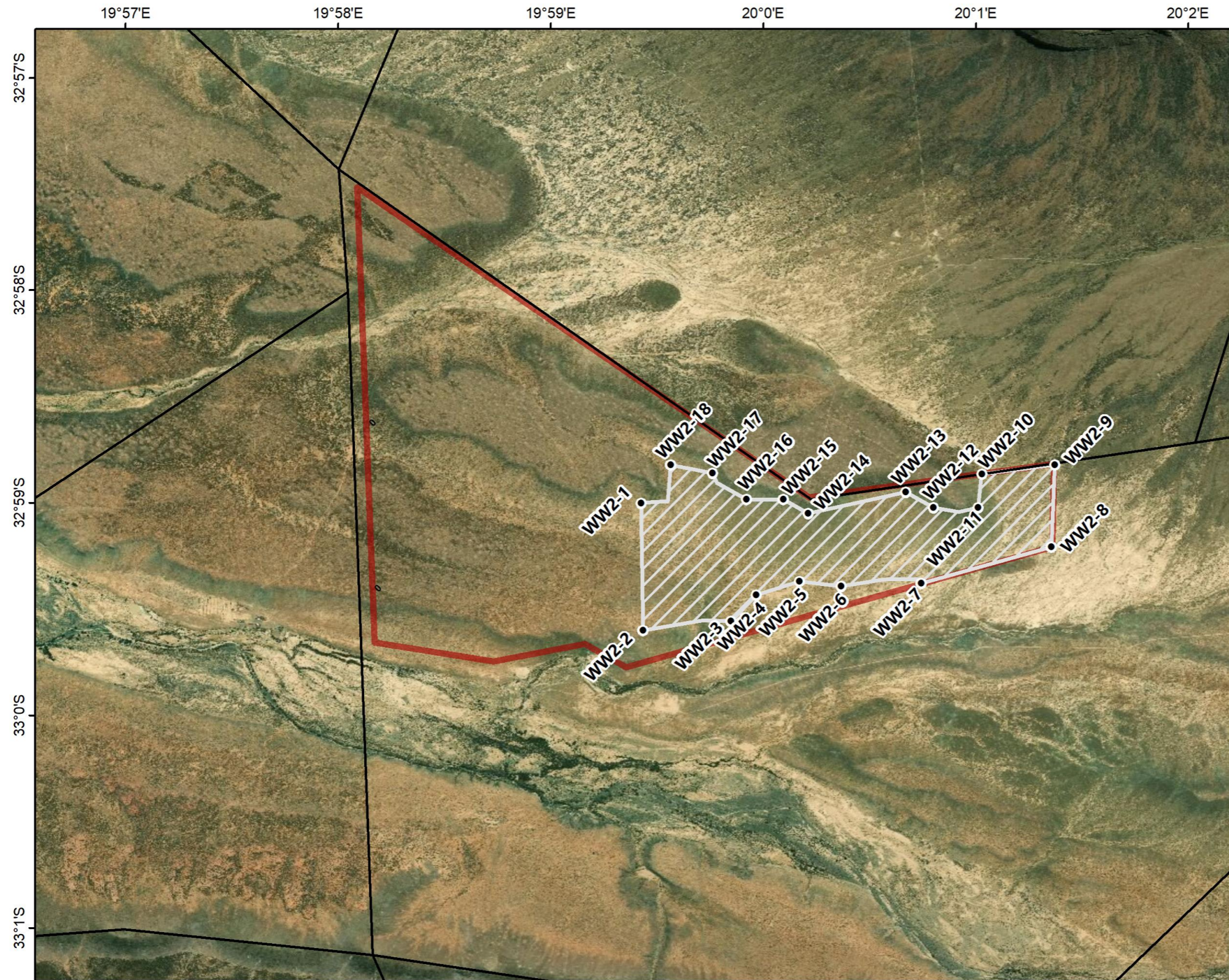


Coordinate System: GCS WGS 1984
Datum: WGS 1984
Units: Degree




Point ID	Lat (y)	Long (x)
WW1-1	-32.9776	19.9690
WW1-2	-32.9905	19.9694
WW1-3	-32.9933	19.9809
WW1-4	-32.9929	19.9836
WW1-5	-32.9935	19.9870
WW1-6	-32.9932	19.9887
WW1-7	-32.9933	19.9906
WW1-8	-32.9834	19.9904
WW1-9	-32.9837	19.9861
WW1-10	-32.9795	19.9767

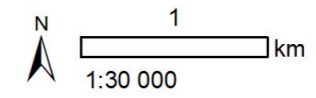
Service Layer Credits: Source: Esri, DigitalGlobe, GeoEye, Earthstar Geographics, CNES/Airbus DS, USDA, USGS, AeroGRID, IGN, and the GIS User Community

Appendix A.6: Approximate Project Co-ordinate Map – Witte Wall PV 2



Proposed 175 MW Witte Wall PV 2 Facility Western Cape South Africa

-  Witte Wall PV cluster site
-  PV Area
-  Farm portions



Coordinate System: GCS WGS 1984
Datum: WGS 1984
Units: Degree

Point ID	Lat (y)	Long (x)
WW2-1	-32.9834	19.9904
WW2-2	-32.9933	19.9906
WW2-3	-32.9926	19.9975
WW2-4	-32.9906	19.9995
WW2-5	-32.9895	20.0028
WW2-6	-32.9899	20.0061
WW2-7	-32.9897	20.0124
WW2-8	-32.9868	20.0226
WW2-9	-32.9804	20.0228
WW2-10	-32.9811	20.0171
WW2-11	-32.9837	20.0168
WW2-12	-32.9837	20.0133
WW2-13	-32.9825	20.0112
WW2-14	-32.9842	20.0035
WW2-15	-32.9831	20.0016
WW2-16	-32.9831	19.9987
WW2-17	-32.9810	19.9960
WW2-18	-32.9803	19.9927

Service Layer Credits: Source: Esri, DigitalGlobe, GeoEye, Earthstar Geographics, CNES/Airbus DS, USDA, USGS, AeroGRID, IGN, and the GIS User Community

Appendix A.7: Approximate Project Co-ordinate Map – Access Roads for Witte Wall PV 1 and Witte Wall PV 2



Service Layer Credits: Source: Esri, DigitalGlobe, GeoEye, Earthstar Geographics, CNES/Airbus DS, USDA, USGS, AeroGRID, IGN, and the GIS User Community

APPENDICES

DRAFT BASIC ASSESSMENT REPORT: Basic Assessment for the Proposed Development of two 175 MW Solar Photovoltaic (PV) Facilities and associated Infrastructure (i.e. Witte Wall PV 1 and Witte Wall PV 2), near Touws River, Western Cape

Appendix A.8: List of Co-ordinates for Witte Wall PV 1 and Witte Wall PV 2

Witte Wall PV 1

Point	DD		DMS	
	Latitude (Y)	Longitude (X)	Latitude (Y)	Longitude (X)
WW1-1	-32.977581	19.968995	32° 58' 39.291" S	19° 58' 8.382" E
WW1-2	-32.990541	19.969438	32° 59' 25.947" S	19° 58' 9.976" E
WW1-3	-32.993279	19.980903	32° 59' 35.804" S	19° 58' 51.252" E
WW1-4	-32.992873	19.983572	32° 59' 34.343" S	19° 59' 0.858" E
WW1-5	-32.993541	19.987009	32° 59' 36.749" S	19° 59' 13.232" E
WW1-6	-32.993177	19.988706	32° 59' 35.439" S	19° 59' 19.342" E
WW1-7	-32.993338	19.990564	32° 59' 36.017" S	19° 59' 26.031" E
WW1-8	-32.983358	19.990410	32° 59' 0.088" S	19° 59' 25.475" E
WW1-9	-32.983660	19.986137	32° 59' 1.176" S	19° 59' 10.094" E
WW1-10	-32.979512	19.976735	32° 58' 46.242" S	19° 58' 36.245" E

Witte Wall PV 2

Point	DD		DMS	
	Latitude (Y)	Longitude (X)	Latitude (Y)	Longitude (X)
WW2-1	-32.983358	19.99041	32° 59' 0.088" S	19° 59' 25.475" E
WW2-2	-32.993338	19.990564	32° 59' 36.017" S	19° 59' 26.031" E
WW2-3	-32.992619	19.997461	32° 59' 33.430" S	19° 59' 50.860" E
WW2-4	-32.990575	19.999452	32° 59' 26.069" S	19° 59' 58.027" E
WW2-5	-32.989473	20.002836	32° 59' 22.102" S	20° 0' 10.208" E
WW2-6	-32.989883	20.006091	32° 59' 23.579" S	20° 0' 21.926" E
WW2-7	-32.989661	20.012385	32° 59' 22.779" S	20° 0' 44.587" E
WW2-8	-32.986788	20.022581	32° 59' 12.438" S	20° 1' 21.290" E
WW2-9	-32.98035	20.022838	32° 58' 49.258" S	20° 1' 22.218" E
WW2-10	-32.981078	20.017119	32° 58' 51.882" S	20° 1' 1.629" E
WW2-11	-32.983691	20.016806	32° 59' 1.289" S	20° 1' 0.502" E
WW2-12	-32.983687	20.013307	32° 59' 1.274" S	20° 0' 47.906" E
WW2-13	-32.98249	20.011165	32° 58' 56.964" S	20° 0' 40.196" E
WW2-14	-32.984166	20.003509	32° 59' 2.999" S	20° 0' 12.631" E
WW2-15	-32.983072	20.001555	32° 58' 59.059" S	20° 0' 5.599" E
WW2-16	-32.983061	19.998673	32° 58' 59.021" S	19° 59' 55.223" E
WW2-17	-32.980994	19.996001	32° 58' 51.580" S	19° 59' 45.604" E
WW2-18	-32.980342	19.992727	32° 58' 49.230" S	19° 59' 33.818" E

APPENDICES

DRAFT BASIC ASSESSMENT REPORT: Basic Assessment for the Proposed Development of two 175 MW Solar Photovoltaic (PV) Facilities and associated Infrastructure (i.e. Witte Wall PV 1 and Witte Wall PV 2), near Touws River, Western Cape

Access Road for Witte Wall PV 1 and Witte Wall PV 2

Point	DD		DMS	
	Latitude (Y)	Longitude (X)	Latitude (Y)	Longitude (X)
WW-R-1	-32.97411884	19.90797311	32° 58' 26.828" S	19° 54' 28.703" E
WW-R-2	-32.99518485	19.97028219	32° 59' 42.665" S	19° 58' 13.016" E
WW-R-3	-32.99074412	19.97005498	32° 59' 26.679" S	19° 58' 12.198" E
WW-R-4	-32.97768232	19.96943915	32° 58' 39.656" S	19° 58' 9.981" E
WW-R-5	-32.98365058	19.98613919	32° 59' 1.142" S	19° 59' 10.101" E
WW-R-6	-32.98332021	19.99057209	32° 58' 59.953" S	19° 59' 26.060" E