

Basic Assessment for the Proposed Development of Electrical Grid Infrastructure to support the proposed nine 175 MW Solar Photovoltaic Facilities and associated Infrastructure (i.e. Witte Wall PV 1, Witte Wall PV 2, Grootfontein PV 1, Grootfontein PV 2, Grootfontein PV 3, Hoek Doornen PV 1, Hoek Doornen PV 2, Hoek Doornen PV 3, and Hoek Doornen PV 4), near Touws River, Western Cape

# APPENDIX I

## Pre-Consultation with the Competent Authority

- Appendix I.1: Pre-Application Meeting Request Form
- Appendix I.2: Pre-Application Meeting Presentation
- Appendix I.3: Pre-Application Meeting Notes
- Appendix I.4: Correspondence from the DEFF with Approval of the Pre-Application Meeting Notes
- Appendix I.5: Correspondence from the DEFF with Approval of the Combination and Multiple EA Request

## APPENDICES

**DRAFT BASIC ASSESSMENT REPORT:** Basic Assessment for the Proposed Development of Electrical Grid Infrastructure to support the proposed nine 175 MW Solar Photovoltaic Facilities and associated Infrastructure (i.e. Witte Wall PV 1, Witte Wall PV 2, Grootfontein PV 1, Grootfontein PV 2, Grootfontein PV 3, Hoek Doornen PV 1, Hoek Doornen PV 2, Hoek Doornen PV 3, and Hoek Doornen PV 4), near Touws River, Western Cape

# Appendix I: Pre-Consultation with the Competent Authority

## APPENDIX I.1: PRE-APPLICATION MEETING REQUEST FORM



environment, forestry  
& fisheries

Department:  
Environment, Forestry and Fisheries  
REPUBLIC OF SOUTH AFRICA

PRE-APPLICATION MEETING REQUEST

Pre-application meeting Reference Number:	(For official use only)
Date Received:	

Application for authorisation in terms of the National Environmental Management Act, Act No. 107 of 1998, as amended and the Environmental Impact Assessment (EIA) Regulations, 2014, as amended (the Regulations)

### PROJECT TITLE

- Basic Assessment for the Proposed Development of a 115 MW Solar Photovoltaic Facility and associated Electrical Grid Infrastructure (i.e. Witte Wall 1), near Touws River, Western Cape
- Basic Assessment for the Proposed Development of a 115 MW Solar Photovoltaic Facility and associated Electrical Grid Infrastructure (i.e. Witte Wall 2), near Touws River, Western Cape
- Basic Assessment for the Proposed Development of a 115 MW Solar Photovoltaic Facility and associated Electrical Grid Infrastructure (i.e. Witte Wall 3), near Touws River, Western Cape
- Basic Assessment for the Proposed Development of a 115 MW Solar Photovoltaic Facility and associated Electrical Grid Infrastructure (i.e. Grootfontein 1), near Touws River, Western Cape
- Basic Assessment for the Proposed Development of a 115 MW Solar Photovoltaic Facility and associated Electrical Grid Infrastructure (i.e. Grootfontein 2), near Touws River, Western Cape
- Basic Assessment for the Proposed Development of a 115 MW Solar Photovoltaic Facility and associated Electrical Grid Infrastructure (i.e. Grootfontein 3), near Touws River, Western Cape
- Basic Assessment for the Proposed Development of a 115 MW Solar Photovoltaic Facility and associated Electrical Grid Infrastructure (i.e. Hoek Doornen 1), near Touws River, Western Cape
- Basic Assessment for the Proposed Development of a 115 MW Solar Photovoltaic Facility and associated Electrical Grid Infrastructure (i.e. Hoek Doornen 2), near Touws River, Western Cape
- Basic Assessment for the Proposed Development of a 115 MW Solar Photovoltaic Facility and associated Electrical Grid Infrastructure (i.e. Hoek Doornen 3), near Touws River, Western Cape

**Note from the CSIR:** This pre-application meeting request form is being submitted to discuss nine Basic Assessment Projects (as listed above). Note that all nine projects will be discussed in one pre-application meeting in order to maximise on efficiency, however nine separate Application Forms for Environmental Authorisation will be submitted to the DEFF following the pre-application meeting, based on the outcome of the meeting.

### Kindly note the following:

1. This form must always be used for pre-application meeting requests where this Department is the Competent Authority.
2. This application form is current as of **June 2020**. It is the responsibility of the Applicant / Environmental Assessment Practitioner (EAP) to ascertain whether subsequent versions of the form have been published or produced by the Competent Authority. The latest available Departmental templates are available at <https://www.environment.gov.za/documents/forms>.
3. The onus on Applicant/EAP to determine all applicable listed activities that would require Environmental Authorisation prior to the commencement of the construction activities. Should any revision of your development comprise any other activities that constitute a listed activity/ies as defined in GN R983, R984 and R985 of 04 December 2014, as amended, it must also form part of the Application for Environmental Authorisation.
4. Be reminded that it is not compulsory in terms of the EIA Regulations that a pre-application meeting must take place prior to an application being lodged with the Department.

## APPENDICES

**DRAFT BASIC ASSESSMENT REPORT:** Basic Assessment for the Proposed Development of Electrical Grid Infrastructure to support the proposed nine 175 MW Solar Photovoltaic Facilities and associated Infrastructure (i.e. Witte Wall PV 1, Witte Wall PV 2, Grootfontein PV 1, Grootfontein PV 2, Grootfontein PV 3, Hoek Doornen PV 1, Hoek Doornen PV 2, Hoek Doornen PV 3, and Hoek Doornen PV 4), near Touws River, Western Cape

---

5. This form must be lodged with the Department at least **one (1) month** prior to the requested meeting date.
6. Please note that the proposed date and time will be confirmed prior to the meeting.
7. A detailed motivation and agenda must be appended to this meeting request.
8. This form must be marked **"for Attention: Chief Director: Integrated Environmental Authorisations"** and submitted to the Department via email.
9. All fields are compulsory.
10. The required information must be typed within the spaces provided in the form. The sizes of the spaces provided are not necessarily indicative of the amount of information to be provided. Spaces are provided in tabular format and will extend automatically when each space is filled with typing. A legible font type and size must be used when completing the form. The font size should not be smaller than 10pt (e.g. Arial 10).
11. **Note that the EAP is required to submit minutes of the meeting to the Department for approval as per the timeframes agreed to in the meeting.**
12. The Department reserves the right to refuse the pre-application meeting based on the information provided in this request.

### Departmental Details

**Online Submission:**

EIAapplications@environment.gov.za

**Please read the process for uploading files to determine how files are to submitted to this Department.**

**Postal address:**

Department of Environment, Forestry and Fisheries  
 Attention: Chief Director: Integrated Environmental Authorisations  
 Private Bag X447  
 Pretoria  
 0001

**Physical address:**

Department of Environment, Forestry and Fisheries  
 Attention: Chief Director: Integrated Environmental Authorisations  
 Environment House  
 473 Steve Biko Road  
 Arcadia

Queries must be directed to the Directorate: Coordination, Strategic Planning and Support at:  
 Email: EIAAdmin@environment.gov.za

### 1. APPLICANT CONTACT DETAILS

Name of the Applicant:	Veroniva (Pty) Ltd
RSA Identity/ Passport Number:	Not Applicable
Name of contact person for applicant (if other):	Claude Bosman
RSA Identity/ Passport Number:	8002265119089
Responsible position, e.g. Director, CEO, etc.:	Director
Company/ Trading name (if any):	Not Applicable
Company Registration Number:	2011/135507/07

## APPENDICES

**DRAFT BASIC ASSESSMENT REPORT:** Basic Assessment for the Proposed Development of Electrical Grid Infrastructure to support the proposed nine 175 MW Solar Photovoltaic Facilities and associated Infrastructure (i.e. Witte Wall PV 1, Witte Wall PV 2, Grootfontein PV 1, Grootfontein PV 2, Grootfontein PV 3, Hoek Doornen PV 1, Hoek Doornen PV 2, Hoek Doornen PV 3, and Hoek Doornen PV 4), near Touws River, Western Cape

---

BBBEE status:	Not Applicable		
Physical address:	8 Linden Village, Corner 4th Avenue and 11 Street, Johannesburg, 2195		
Postal address:	P. O. Box 3253, Pinegowrie, Johannesburg		
Postal code:	2123	Cell:	082 331 4098
Telephone:	082 331 4098	Fax:	N/A, email only
E-mail:	<a href="mailto:claudef@veroniva.co.za">claudef@veroniva.co.za</a>		

**Note from the CSIR:** Veroniva (PTY) Ltd is the holding company. Prior to the submission of the Application Forms for Environmental Authorisation, various subsidiary companies will be registered and will serve as the Project Applicants. Details of the subsidiary companies will be provided in the separate Application Forms for Environmental Authorisation.

### 2. ENVIRONMENTAL ASSESSMENT PRACTITIONER CONTACT DETAILS

Company of Environmental Assessment Practitioner:	Council for Scientific and Industrial Research (CSIR)		
B-BBEE	Contribution level (indicate 1 to 8 or non-compliant)	4	Percentage Procurement recognition
EAP name:	Paul Lochner		
EAP Qualifications:	<ul style="list-style-type: none"> <li>▪ B.Sc. Civil Engineering (awarded with Honours), University of Cape Town</li> <li>▪ M. Phil. Environmental Science, University of Cape Town</li> </ul>		
Professional affiliation/registration:	Registered EAP (2019/745) with the Environmental Assessment Practitioners Association of South Africa (EAPASA)		
Physical address:	11 Jan Celliers Street, Stellenbosch, 7599		
Postal address:	PO Box 320, Stellenbosch		
Postal code:	7599	Cell:	084 442 3646
Telephone:	021 888 2486	Fax:	021 888 2693
E-mail:	<a href="mailto:PLochner@csir.co.za">PLochner@csir.co.za</a> <a href="mailto:RAbed@csir.co.za">RAbed@csir.co.za</a>		

### 3. COMPETENT AUTHORITY

Identified Competent Authority to consider the application:	National Department of Environment, Forestry and Fisheries (DEFF)
Reason(s) in terms of S24C of NEMA:	The National DEFF, based in Pretoria, will be the Competent Authority (CA). This is based on a directive that was issued by the Department of Minerals and Energy in 2009 indicating that all energy-related Environmental Assessments must be fast-tracked and that the National DEA (now the DEFF) must be the CA.

### 4. MEETING DETAILS

Purpose of the meeting request	<p>The purpose of the meeting request is to introduce and discuss the following proposed nine Basic Assessment (BA) projects with the DEFF and to obtain confirmation on the proposed scope, approach, and schedule of the BA processes to be undertaken:</p> <ul style="list-style-type: none"> <li>▪ BA for the Proposed Development of a 115 MW Solar Photovoltaic Facility and associated Electrical Grid Infrastructure (i.e. Witte Wall 1), near Touws River, Western Cape;</li> <li>▪ BA for the Proposed Development of a 115 MW Solar Photovoltaic Facility and associated Electrical Grid Infrastructure (i.e. Witte Wall 2), near Touws River, Western Cape;</li> <li>▪ BA for the Proposed Development of a 115 MW Solar Photovoltaic Facility and associated Electrical Grid</li> </ul>
--------------------------------	--



## APPENDICES

**DRAFT BASIC ASSESSMENT REPORT:** Basic Assessment for the Proposed Development of Electrical Grid Infrastructure to support the proposed nine 175 MW Solar Photovoltaic Facilities and associated Infrastructure (i.e. Witte Wall PV 1, Witte Wall PV 2, Grootfontein PV 1, Grootfontein PV 2, Grootfontein PV 3, Hoek Doornen PV 1, Hoek Doornen PV 2, Hoek Doornen PV 3, and Hoek Doornen PV 4), near Touws River, Western Cape

---

	<p>Infrastructure (i.e. Witte Wall 3), near Touws River, Western Cape;</p> <ul style="list-style-type: none"> <li>▪ BA for the Proposed Development of a 115 MW Solar Photovoltaic Facility and associated Electrical Grid Infrastructure (i.e. Grootfontein 1), near Touws River, Western Cape;</li> <li>▪ BA for the Proposed Development of a 115 MW Solar Photovoltaic Facility and associated Electrical Grid Infrastructure (i.e. Grootfontein 2), near Touws River, Western Cape;</li> <li>▪ BA for the Proposed Development of a 115 MW Solar Photovoltaic Facility and associated Electrical Grid Infrastructure (i.e. Grootfontein 3), near Touws River, Western Cape;</li> <li>▪ BA for the Proposed Development of a 115 MW Solar Photovoltaic Facility and associated Electrical Grid Infrastructure (i.e. Hoek Doornen 1), near Touws River, Western Cape;</li> <li>▪ BA for the Proposed Development of a 115 MW Solar Photovoltaic Facility and associated Electrical Grid Infrastructure (i.e. Hoek Doornen 2), near Touws River, Western Cape; and</li> <li>▪ BA for the Proposed Development of a 115 MW Solar Photovoltaic Facility and associated Electrical Grid Infrastructure (i.e. Hoek Doornen 3), near Touws River, Western Cape.</li> </ul> <p>In particular, the purpose of the pre-application meeting includes the following:</p> <ul style="list-style-type: none"> <li>▪ To provide the DEFF with an overview of the project description for the abovementioned projects;</li> <li>▪ To discuss and confirm the specialist assessments and compliance statements to be undertaken;</li> <li>▪ To discuss and confirm the approach towards the specialist reporting;</li> <li>▪ To confirm the approach towards including Lithium Ion Battery Energy Storage Systems in the project description;</li> <li>▪ To discuss the proposed Public Participation Plan (PPP) which will be submitted to the DEFF for approval in terms of the Directions issued by the DEFF on 5 June 2020 in Government Notice 650 (regarding measures to prevent the spread of COVID-19 relating to National Environmental Management permits and licences); and</li> <li>▪ To discuss and confirm the proposed project schedule and overall process for the BAs, including the applicable Listed Activities and Cumulative Impact Assessment approach (i.e. assess cumulative impacts based on a 30 km buffer and based on Renewable Energy projects with a positive Environmental Authorisation issued at the start of this BA (i.e. 14 August 2020)).</li> </ul>
<p><b>Any advice requested before from the Department on this project i.e. from IQ or via email (attached response received)</b></p>	<p>Yes ✓</p> <p><b>Note from the CSIR:</b> Refer to Appendix 3.1 of this Pre-</p>

## APPENDICES

**DRAFT BASIC ASSESSMENT REPORT:** Basic Assessment for the Proposed Development of Electrical Grid Infrastructure to support the proposed nine 175 MW Solar Photovoltaic Facilities and associated Infrastructure (i.e. Witte Wall PV 1, Witte Wall PV 2, Grootfontein PV 1, Grootfontein PV 2, Grootfontein PV 3, Hoek Doornen PV 1, Hoek Doornen PV 2, Hoek Doornen PV 3, and Hoek Doornen PV 4), near Touws River, Western Cape

---

	Application Request Form for a copy of the email correspondence (dated 14 May 2020) with the IQ Department regarding generic queries on battery energy storage systems; as well as Appendix 3.2 for email correspondence (dated 14 May 2020) from Mr. Muhammad Essop of the DEFF regarding the planning of the BA Processes. A telephonic discussion was also held between Ms. Rohaida Abed of the CSIR and Mr. Muhammad Essop of the DEFF on 18 May 2020 regarding various generic queries, including battery energy storage systems.	
Applicant Category	Application by Parastatal	
	Organ of State	
	Private Individual/Parties	✓
Application type	Application for EA	✓
	Application for Integrated EA	
	Application for Amendment EA	
Proposed meeting date and time-slot. Provide three alternative dates and time-slots ( <i>note that the Department requires at least a month due to logistical arrangements</i> )		
<p><b>Note from the CSIR:</b> The CSIR acknowledges that the DEFF has a considerable number of applications to process. We are humbly requesting alternative dates prior to the one-month clause above based on the strategic nature of the project and the approaching Bidding Window of the Renewable Energy Independent Power Producer Procurement Programme (REIPPPP).</p>		
Date	Time-slot	
	Start time	End time
1. 25 August 2020	10H00	12H00
2. 1 September 2020	10H00	12H00
3. 8 September 2020	10H00	12H00
Duration of the meeting	2 Hours	
Estimated number of people attending meeting	4	

Please attach a proposed agenda as **APPENDIX 1**. If the Applicant or EAP intends to discuss several projects in one meeting, separate agendas must be drafted for each proposed project and the project details for each project. Please note that a detailed agenda is required.

**Note from the CSIR:** This pre-application meeting request form is being submitted to discuss nine Applications for Environmental Authorisations. All applications will be discussed in one pre-application meeting in order to maximise on efficiency, however nine separate Applications for Environmental Authorisation will be submitted to the DEFF following the pre-application meeting. The proposed projects have the same project components, and they take place on adjacent farm properties. Based on this, one single combined, detailed proposed agenda for the pre-application meeting has been compiled and included in **Appendix 1** of this pre-application meeting request form.

## APPENDICES

**DRAFT BASIC ASSESSMENT REPORT:** Basic Assessment for the Proposed Development of Electrical Grid Infrastructure to support the proposed nine 175 MW Solar Photovoltaic Facilities and associated Infrastructure (i.e. Witte Wall PV 1, Witte Wall PV 2, Grootfontein PV 1, Grootfontein PV 2, Grootfontein PV 3, Hoek Doornen PV 1, Hoek Doornen PV 2, Hoek Doornen PV 3, and Hoek Doornen PV 4), near Touws River, Western Cape

---

### 5. PROJECT DETAILS

Project description	<p>The Project Applicant, Veroniva (PTY) Ltd (hereinafter referred to as Veroniva), is proposing to design, construct and operate nine 115 MW Solar Photovoltaic (PV) power generation facilities, north-east of Ceres in the Western Cape Province. The proposed projects will make use of PV solar technology to generate electricity from energy derived from the sun. Each solar PV facility will have a range of associated infrastructure, including an on-site substation and will connect to the Eskom Kappa Substation via a dedicated 132 kV power line.</p> <p>The proposed PV facilities will be constructed on the following farm portions:</p> <ul style="list-style-type: none"> <li>▪ Remainder of Grootfontein Farm 149;</li> <li>▪ Portion 5 of Grootfontein Farm 149;</li> <li>▪ Remainder of Witte Wall Farm 171; and</li> <li>▪ Portion 1 of Hoek Doornen Farm 172.</li> </ul> <p>The power lines will traverse these aforementioned farm portions, as well as the Remainder of Die Brak Farm 241 and Remainder of Platfontein Farm 240.</p> <p>Each 115 MW Solar PV plant will cover an approximate footprint of 250 hectares, however, this footprint could be further reduced during the planning stage. A larger area within the farm portions for the PV facilities and associated infrastructure will be studied by the specialists, as well as an approximately 300 m wide corridor for the power lines, in order to identify sensitivities and features that need to be avoided. The location of the proposed facilities and the citing of the project infrastructure within the assessed larger study areas will be informed by the recommendations of the specialists and field work.</p> <p>Overall, nine PV facilities will be assessed, along with nine on-site substations and nine power lines, as well as associated infrastructure. Assessment of nine 132 kV power lines will cover the worst case scenario. However, depending on which projects win preferred bidder status in the Renewable Energy Independent Power Producer Procurement Program (REIPPPP) (i.e. the issuing of a Power Purchase Agreement (PPA) from the Department of Mineral Resources and Energy (DMRE)) or a similar procurement process, the number of power lines may be reduced.</p> <p>Nine separate applications for Environmental Authorisation (EA) will be submitted to the DEFF.</p> <p>The proposed projects will each consist of the components listed below. It is important to note at the outset that the exact specifications of the proposed project components will be determined during the detailed engineering phase (subsequent to the issuing of an EA, should such an authorisation be granted for the proposed projects), but that the information provided below is seen as the worst-case scenario for the project.</p> <ul style="list-style-type: none"> <li>▪ Solar Field, comprising Solar Arrays with a maximum height of 10 m and maximum footprint of 250 hectares per project, including the following:             <ul style="list-style-type: none"> <li>○ PV Modules;</li> <li>○ Single Axis Tracking structures (aligned north-south), Fixed Axis Tracking (aligned east-west), Dual Axis Tracking (aligned east-west and north-south), Fixed Tilt Mounting Structure or Bifacial Solar Modules (all options will be considered in the design and BA Processes);</li> <li>○ Solar module mounting structures comprised of galvanised steel and aluminium; and</li> <li>○ Foundations which will likely be drilled and concreted into the ground.</li> </ul> </li> <li>▪ Building Infrastructure             <ul style="list-style-type: none"> <li>○ Offices (maximum height 7 m and footprint of 1000 m<sup>2</sup>);</li> </ul> </li> </ul>
---------------------	---

## APPENDICES

**DRAFT BASIC ASSESSMENT REPORT:** Basic Assessment for the Proposed Development of Electrical Grid Infrastructure to support the proposed nine 175 MW Solar Photovoltaic Facilities and associated Infrastructure (i.e. Witte Wall PV 1, Witte Wall PV 2, Grootfontein PV 1, Grootfontein PV 2, Grootfontein PV 3, Hoek Doornen PV 1, Hoek Doornen PV 2, Hoek Doornen PV 3, and Hoek Doornen PV 4), near Touws River, Western Cape

---

	<ul style="list-style-type: none"> <li>○ Operational and maintenance control centre (maximum height 7 m and footprint 500 m<sup>2</sup>);</li> <li>○ Warehouse/workshop (maximum height 7 m and footprint 500 m<sup>2</sup>);</li> <li>○ Ablution facilities (maximum height 7 m and footprint 50 m<sup>2</sup>);</li> <li>○ Converter/inverter stations (height from 2.5 m to 7 m (maximum) and footprint 2500 m<sup>2</sup>);</li> <li>○ On-site substation building (footprint 20 000 m<sup>2</sup>); and</li> <li>○ Guard Houses (height 3 m, footprint 40 m<sup>2</sup>).</li> <li>▪ Associated Infrastructure             <ul style="list-style-type: none"> <li>○ 132 kV overhead power line to connect to the existing Eskom Kappa Substation to be located within a corridor of approximately 300 m wide. The specific power line will have the following specifications:                 <ul style="list-style-type: none"> <li>▪ Height = 22.5 m to 30 m.</li> <li>▪ The servitude for the 132 kV power line will be 33 m wide. Note that the entire servitude will not be cleared of vegetation. Vegetation clearance within the servitude will be undertaken in compliance with relevant standards and specifications.</li> <li>▪ Length from the PV site to the Eskom Substation will be confirmed based on the route identification and selection process that will be informed by the specialists. The length of the corridor is approximately 20 - 23 km.</li> </ul> </li> <li>○ Associated electrical infrastructure at the Eskom Kappa Substation (including but not limited to feeders, Busbars, new transformer bay (up to 500 MVA) and extension to the platform at the Eskom Kappa Substation);</li> <li>○ On-site substation;</li> <li>○ Internal 33 kV power lines/underground cables (either underground to maximum depth of 1.6 m or above ground with height of 9 m);</li> <li>○ Lithium Ion Battery Energy Storage System, which will cover an area of approximately 1 - 6 hectares and a height of up to 5 – 10 m. The battery will have a capacity of approximately 400 MW/hour;</li> <li>○ Underground low voltage cables or cable trays (underground to maximum depth of 1.4 m);</li> <li>○ Access roads:                 <ul style="list-style-type: none"> <li>▪ Width ranging between 4 - 8 m.</li> <li>▪ Total Length: Approximately 7 km for the Witte Wall PV Project, approximately 2 km for the Grootfontein PV Project; and approximately 1 km for the Hoek Doornen PV Project.</li> </ul> </li> <li>○ Internal gravel roads and service roads below the power line (width of 4 m);</li> <li>○ Fencing (between 2 – 3 m high) around the PV Facilities - Access points will be managed and monitored by an appointed security service provider. The type of fencing will either be of palisade, mesh type or a fully electrified option. Game fences will also be constructed around each PV facility on the Witte Wall Farm;</li> <li>○ Fencing for the power corridors: Game fences will be constructed along the power line route to fence off the servitudes across the farms Witte Wall, Grootfontein and Die Brak. No fencing will be constructed along the power line where it traverses the Platfontein Farm;</li> <li>○ Panel maintenance and cleaning area;</li> <li>○ Stormwater channels (Details to be confirmed once the Engineering, Procurement and Construction (EPC) contractor has been selected and the design is finalised. A detailed stormwater management plan would need to be developed prior to construction);</li> <li>○ Construction work area (i.e. laydown area of maximum 5 ha);</li> <li>○ Water: It is proposed that panel cleaning will take place quarterly; however, this may be revised should the site conditions warrant more frequent cleaning. It is estimated that the panel washing process will require approximately 5 million to 8 million litres of water per year during operations, to be sourced from the</li> </ul> </li> </ul>
--	---



## APPENDICES

**DRAFT BASIC ASSESSMENT REPORT:** Basic Assessment for the Proposed Development of Electrical Grid Infrastructure to support the proposed nine 175 MW Solar Photovoltaic Facilities and associated Infrastructure (i.e. Witte Wall PV 1, Witte Wall PV 2, Grootfontein PV 1, Grootfontein PV 2, Grootfontein PV 3, Hoek Doornen PV 1, Hoek Doornen PV 2, Hoek Doornen PV 3, and Hoek Doornen PV 4), near Touws River, Western Cape

---

	<p>Municipality. At this stage, no water is planned to be abstracted from or discharged to any surface water systems.</p> <ul style="list-style-type: none"> <li>○ Construction Period: The construction phase for each proposed project is expected to extend 12 to 14 months.</li> </ul> <p>The total maximum project footprint of each PV facility will be 250 hectares including the PV facility and infrastructure such as internal roads for each PV facility. Some of the main access roads will fall outside of the 250 hectares.</p> <p>The proposed projects fall within one of the Renewable Energy Development Zone (REDZs), which were promulgated in Government Gazette 41445, Government Notice (GN) 114 on 16 February 2018. In these REDZs, a BA process can be followed instead of a full Scoping and EIA process and the authority decision-making period has been reduced from 107 days to 57 days. The proposed projects will take place within REDZ 2, which is known as the Komsberg REDZ.</p> <p>The proposed projects also fall within one of the Strategic Transmission Corridors (i.e. Central Corridor) that was promulgated in Government Gazette 41445, Government Notice (GN) 113 on 16 February 2018. As such, the proposed project will comply with the generic Environmental Management Programme (EMPr) that was compiled for the development and expansion of (a) overhead electricity transmission and distribution infrastructure; and (b) substation infrastructure for the transmission and distribution of electricity. On 22 March 2019, these two Generic EMPs were gazetted for implementation in Government Gazette 42323, Government Notice 435.</p>
<p>Indicate if any screening has taken place on site</p>	<p>In 2019, preliminary screening took place on the sites (Remainder of Grootfontein Farm 149; Portion 5 of Grootfontein Farm 149; Remainder of Witte Wall Farm 171; and Portion 1 of Hoek Doornen Farm 172) in order to identify the main areas to be avoided from a sensitivity perspective. A terrestrial fauna and flora specialist was consulted with. The specialist identified areas on the sites that should be avoided, as best as possible. These include sensitive features, such as dunes and drainage lines. These areas have been taken into consideration and have streamlined the areas to be studied by the specialists. These areas are shown in the locality maps included in Appendix 2 of this form.</p>
<p>Physical Address where the development will take place</p>	<p>The proposed sites can be accessed via gravel roads off the R356, which runs to the west of the sites. The proposed sites are located approximately 90 km north-east of the town of Ceres and 85 km north of the town of Touws River, in the Western Cape Province.</p> <p>The Witte Wall 1, Witte Wall 2 and Witte Wall 3 projects are located on the following farm portions:</p> <ul style="list-style-type: none"> <li>▪ Remainder of Witte Wall Farm 171;</li> <li>▪ Remainder of Die Brak Farm 241; and</li> <li>▪ Remainder of Platfontein Farm 240.</li> </ul> <p>The Grootfontein 1, Grootfontein 2 and Grootfontein 3 projects are located on the following farm portions:</p> <ul style="list-style-type: none"> <li>▪ Remainder of Grootfontein Farm 149;</li> <li>▪ Portion 5 of Grootfontein Farm 149;</li> <li>▪ Remainder of Witte Wall Farm 171;</li> <li>▪ Remainder of Die Brak Farm 241; and</li> <li>▪ Remainder of Platfontein Farm 240.</li> </ul> <p>The Hoek Doornen 1, Hoek Doornen 2 and Hoek Doornen 3 projects are located on the following farm portions:</p> <ul style="list-style-type: none"> <li>▪ Portion 1 of Hoek Doornen Farm 172;</li> <li>▪ Remainder of Witte Wall Farm 171;</li> </ul>

## APPENDICES

**DRAFT BASIC ASSESSMENT REPORT:** Basic Assessment for the Proposed Development of Electrical Grid Infrastructure to support the proposed nine 175 MW Solar Photovoltaic Facilities and associated Infrastructure (i.e. Witte Wall PV 1, Witte Wall PV 2, Grootfontein PV 1, Grootfontein PV 2, Grootfontein PV 3, Hoek Doornen PV 1, Hoek Doornen PV 2, Hoek Doornen PV 3, and Hoek Doornen PV 4), near Touws River, Western Cape

---

	<ul style="list-style-type: none"> <li>▪ Remainder of Die Brak Farm 241; and</li> <li>▪ Remainder of Platfontein Farm 240.</li> </ul>
Farm name(s)/ Erf No	<p>The Witte Wall 1, Witte Wall 2 and Witte Wall 3 projects are located on the following farm portions:</p> <ul style="list-style-type: none"> <li>▪ Remainder of Witte Wall Farm 171;</li> <li>▪ Remainder of Die Brak Farm 241; and</li> <li>▪ Remainder of Platfontein Farm 240.</li> </ul> <p>The Grootfontein 1, Grootfontein 2 and Grootfontein 3 projects are located on the following farm portions:</p> <ul style="list-style-type: none"> <li>▪ Remainder of Grootfontein Farm 149;</li> <li>▪ Portion 5 of Grootfontein Farm 149;</li> <li>▪ Remainder of Witte Wall Farm 171;</li> <li>▪ Remainder of Die Brak Farm 241; and</li> <li>▪ Remainder of Platfontein Farm 240.</li> </ul> <p>The Hoek Doornen 1, Hoek Doornen 2 and Hoek Doornen 3 projects are located on the following farm portions:</p> <ul style="list-style-type: none"> <li>▪ Portion 1 of Hoek Doornen Farm 172;</li> <li>▪ Remainder of Witte Wall Farm 171;</li> <li>▪ Remainder of Die Brak Farm 241; and</li> <li>▪ Remainder of Platfontein Farm 240.</li> </ul>
Local Municipality	Witzenburg Local Municipality
District Municipality	Cape Winelands District Municipality

Locality map:	<p>A locality map must be attached to the application form, as <b>APPENDIX 2</b>. The scale of the locality map must be at least 1:50 000. For linear activities of more than 25 kilometres, a smaller scale e.g. 1:250 000 can be used. The scale must be indicated on the map. The map must include the following:</p> <ul style="list-style-type: none"> <li>• an accurate indication of the project site position as well as the positions of the alternative sites, if any;</li> <li>• road names or numbers of all the major roads as well as the roads that provide access to the site(s)</li> <li>• a north arrow;</li> <li>• a legend;</li> <li>• the prevailing wind direction;</li> <li>• site sensitivities, including but not limited to vegetation, wetlands, watercourses, heritage sites, critical biodiversity area/s, World Heritage Site, etc. and it must be overlaid by the study area; and</li> <li>• GPS co-ordinates (Indicate the position of the proposed activity with the latitude and longitude at the centre point for each alternative site.</li> <li>• The co-ordinates should be in degrees and decimal minutes. The minutes should be to at least three decimal places. The projection that must be used in all cases is the WGS-84 spheroid in a national or local projection)</li> </ul>
---------------	--

**Note from the CSIR: Refer to Appendix 2 of this Pre-Application Meeting Request Form for a copy of the Locality Map and Preliminary Site Sensitivity Map.**

## APPENDICES

**DRAFT BASIC ASSESSMENT REPORT:** Basic Assessment for the Proposed Development of Electrical Grid Infrastructure to support the proposed nine 175 MW Solar Photovoltaic Facilities and associated Infrastructure (i.e. Witte Wall PV 1, Witte Wall PV 2, Grootfontein PV 1, Grootfontein PV 2, Grootfontein PV 3, Hoek Doornen PV 1, Hoek Doornen PV 2, Hoek Doornen PV 3, and Hoek Doornen PV 4), near Touws River, Western Cape

### 6. ACTIVITIES APPLIED FOR

For an application for authorisation that involves more than one listed activity that, together, make up one development proposal, all the listed activities pertaining to this application must be provided below.

**Note from the CSIR:** The listed activities for all nine of the Solar PV projects and associated infrastructure are identical at this stage of the process, as they have identical project components and infrastructure. Hence one list of listed activities has been provided below. Separate lists of listed activities for each project will be provided in the separate Application Forms for Environmental Authorisation and Draft BA Reports, which will also take the environmental features on site into consideration.

Activity No(s):	Provide the relevant <b>Basic Assessment Activity(ies)</b> as set out in <b>Listing Notice 1</b> of the EIA Regulations, 2014 as amended.	Describe the portion of the proposed project to which the applicable listed activity relates.
<b>Activity 11(i)</b>	<p>The development of facilities or infrastructure for the transmission and distribution of electricity-</p> <p>(i) outside urban areas or industrial complexes with a capacity of more than 33 but less than 275 kilovolts or more;</p> <p>excluding the development of bypass infrastructure for the transmission and distribution of electricity where such bypass infrastructure is —</p> <p>(a) temporarily required to allow for maintenance of existing infrastructure;</p> <p>(b) 2 kilometres or shorter in length;</p> <p>(c) within an existing transmission line servitude; and</p> <p>(d) will be removed within 18 months of the commencement of development.</p>	<p>The proposed project will entail the construction and installation of nine overhead 132 kV power lines from each of PV facilities to the Eskom Kappa Substation, as well as nine on-site substations at each PV facility. The proposed project will take place outside of an urban area.</p> <p>Assessment of nine 132 kV power lines will cover the worst case scenario. However, depending on which projects win preferred bidder status in the Renewable Energy Independent Power Producer Procurement Program (REIPPPP) (i.e. the issuing of a Power Purchase Agreement (PPA) from the Department of Mineral Resources and Energy (DMRE)) or a similar procurement process, the number of power lines may be reduced.</p>
<b>Activity 12 (ii) (a) (c)</b>	<p>The development of:</p> <p>(ii) infrastructure or structures with a physical footprint of 100 square metres or more;</p> <p>where such development occurs -</p> <p>a) within a watercourse;</p> <p>b) in front of a development setback; or</p> <p>c) if no development setback exists, within 32 metres of a watercourse, measured from the edge of a watercourse;</p> <p>excluding -</p> <p>(aa) the development of infrastructure or structures within existing ports or harbours that will not increase the development footprint of the port or harbour;</p> <p>(bb) where such development activities are related to the development of a port or harbour, in which case activity 26 in Listing Notice 2 of 2014 applies;</p> <p>(cc) activities listed in activity 14 in Listing Notice 2 of 2014 or activity 14 in Listing Notice 3 of 2014, in which case that activity applies;</p> <p>(dd) where such development occurs within an urban area;</p>	<p>The proposed nine solar PV facilities will be constructed on various farm portions, approximately 90 km north-east of Ceres within the Witzenburg Local Municipality, Western Cape Province. Hence the proposed project will take place outside of an urban area.</p> <p>The proposed 115 MW Solar PV facilities will entail the construction of building infrastructure and structures (such as the solar fields, offices, workshops, ablution facilities, on-site substations, laydown areas and security enclosures etc.). The infrastructure and structures are expected to exceed a footprint of 100 m<sup>2</sup> and some may occur within drainage features and 32 m of the watercourses.</p>

## APPENDICES

**DRAFT BASIC ASSESSMENT REPORT:** Basic Assessment for the Proposed Development of Electrical Grid Infrastructure to support the proposed nine 175 MW Solar Photovoltaic Facilities and associated Infrastructure (i.e. Witte Wall PV 1, Witte Wall PV 2, Grootfontein PV 1, Grootfontein PV 2, Grootfontein PV 3, Hoek Doornen PV 1, Hoek Doornen PV 2, Hoek Doornen PV 3, and Hoek Doornen PV 4), near Touws River, Western Cape

	(ee) where such development occurs within existing roads, road reserves or railway line reserves; or (ff) the development of temporary infrastructure or structures where such infrastructure or structures will be removed within 6 weeks of the commencement of development and where indigenous vegetation will not be cleared.	
<b>Activity 19</b>	The infilling or depositing of any material of more than 10 cubic metres into, or the dredging, excavation, removal or moving of soil, sand, shells, shell grit, pebbles or rock of more than 10 cubic metres from a watercourse;  but excluding where such infilling, depositing, dredging, excavation, removal or moving-  a) will occur behind a development setback; b) is for maintenance purposes undertaken in accordance with a maintenance management plan; c) falls within the ambit of activity 21 in this Notice, in which case that activity applies; d) occurs within existing ports or harbours that will not increase the development footprint of the port or harbour; or e) where such development is related to the development of a port or harbour, in which case activity 26 in Listing Notice 2 of 2014 applies.	The proposed projects may entail the excavation, removal and moving of more than 10 m <sup>3</sup> of soil, sand, pebbles or rock from nearby watercourses on site. The proposed project may also entail the infilling of more than 10 m <sup>3</sup> of material into the nearby watercourses. The Groot River runs through the sites, as well as associated tributaries and minor drainage lines. Additional drainage lines will be identified by the specialists. Details of the infilling of and excavations from the drainage features will be confirmed during the detailed design phase.
<b>Activity 28(ii)</b>	Residential, mixed, retail, commercial, industrial or institutional developments where such land was used for agriculture, game farming, equestrian purposes, or afforestation on or after 01 April 1998 and where such development:  (ii) will occur outside an urban area, where the total land to be developed is bigger than 1 hectare	The proposed projects will take place outside of an urban area, on several farm portions. The Witte Wall Farm currently has game on it. The proposed 115 MW solar PV facilities, which are considered as commercial/ industrial developments, will each have an estimated footprint of approximately 250 ha. The proposed projects will also entail the construction of nine on-site substations and power lines (including towers and pylons). This will constitute infrastructure with a physical footprint of more than 1 ha.
<b>Activity 47</b>	The expansion of facilities or infrastructure for the transmission and distribution of electricity where the expanded capacity will exceed 275 kilovolts and the development footprint will increase.	The proposed project will also include associated electrical infrastructure at the Eskom Kappa Substation (including but not limited to feeders, Busbars, new transformer bay (up to 500 MVA) and extension to the platform at the Eskom Kappa Substation).
Activity No(s):	Provide the relevant <b>Basic Assessment Activity(ies)</b> as set out in <b>Listing Notice 3</b> of the EIA Regulations, 2014 as amended.	Describe the portion of the proposed project to which the applicable listed activity relates.
<b>Activity 4 (i) (ii) (aa)</b>	The development of a road wider than 4 metres with a reserve less than 13,5 metres.  i. Western Cape  ii. Areas outside urban areas;  (aa) Areas containing indigenous vegetation;	Access roads will be constructed to access each of the main affected farm portions (Remainder of Grootfontein Farm 149; Portion 5 of Grootfontein Farm 149; Remainder of Witte Wall Farm 171; and Portion 1 of Hoek Doornen Farm 172). The access roads are estimated to have a width ranging between 4 m and 8 m. The roads will extend approximately 7 km for the Witte Wall PV



## APPENDICES

**DRAFT BASIC ASSESSMENT REPORT:** Basic Assessment for the Proposed Development of Electrical Grid Infrastructure to support the proposed nine 175 MW Solar Photovoltaic Facilities and associated Infrastructure (i.e. Witte Wall PV 1, Witte Wall PV 2, Grootfontein PV 1, Grootfontein PV 2, Grootfontein PV 3, Hoek Doornen PV 1, Hoek Doornen PV 2, Hoek Doornen PV 3, and Hoek Doornen PV 4), near Touws River, Western Cape

		<p>Projects, approximately 2 km for the Grootfontein PV Projects; and approximately 1 km for the Hoek Doornen PV Projects.</p> <p>Internal gravel roads and service roads below the power lines will also be constructed, and these will have a width of approximately 4 m.</p> <p>The proposed projects will take place outside of an urban area on land containing indigenous vegetation.</p>
<b>Activity 12 (i) (ii)</b>	<p>The clearance of an area of 300 square metres or more of indigenous vegetation except where such clearance of indigenous vegetation is required for maintenance purposes undertaken in accordance with a maintenance management plan.</p> <p>i. Western Cape</p> <p>ii. Within critical biodiversity areas identified in bioregional plans;</p>	<p>The nine proposed 115 MW solar PV facilities will each have an estimated footprint of approximately 250 ha. As a result, more than 300 m<sup>2</sup> of indigenous vegetation would be removed for the construction of the proposed Solar PV facilities and associated infrastructure. The proposed project sites contain Critical Biodiversity Area (CBA) 1, CBA 2, Ecological Support Area (ESA) 1 and ESA 2 in terms of the Western Cape Biodiversity Spatial Plan (2017).</p>
<b>Activity 14 (ii) (a) and (c); (i), (i) and (ff)</b>	<p>The development of –</p> <p>(ii) infrastructure or structures with a physical footprint of 10 square metres or more;</p> <p>where such development occurs –</p> <p>(a) within a watercourse;</p> <p>(c) if no development setback has been adopted, within 32 metres of a watercourse, measured from the edge of a watercourse;</p> <p>i. Western Cape</p> <p>i. Outside urban areas:</p> <p>(ff) Critical biodiversity areas or ecosystem service areas as identified in systematic biodiversity plans adopted by the competent authority or in bioregional plans;</p>	<p>The proposed nine solar PV facilities will be constructed on various farm portions, approximately 90 km north-east of Ceres within the Witzenburg Local Municipality, Western Cape Province. Hence the proposed project will take place outside of an urban area.</p> <p>The proposed 115 MW Solar PV facilities will entail the construction of building infrastructure and structures (such as the solar fields, offices, workshops, ablution facilities, on-site substations, laydown areas and security enclosures etc.). The infrastructure and structures will exceed a footprint of 10 m<sup>2</sup> and some may occur within drainage features and 32 m of the watercourses.</p> <p>The proposed project sites contain Critical Biodiversity Area (CBA) 1, CBA 2, Ecological Support Area (ESA) 1 and ESA 2 in terms of the Western Cape Biodiversity Spatial Plan (2017).</p>
Activity No(s):	Provide the relevant <b>Scoping and EIR Activity(ies)</b> as set out in <b>Listing Notice 2</b> of the EIA Regulations, 2014 as amended.	Describe the portion of the proposed project to which the applicable listed activity relates.
<b>Activity 1</b>	<p>The development of facilities or infrastructure for the generation of electricity from a renewable resource where the electricity output is 20 megawatts or more, excluding where such development of facilities or infrastructure is for photovoltaic installations and occurs:</p> <p>a) within an urban area; or</p>	<p>The proposed project will entail the construction of nine 115 MW Solar PV facilities (i.e. facility for the generation of electricity from a renewable resource). The proposed project will take place outside of an urban area.</p>

## APPENDICES

**DRAFT BASIC ASSESSMENT REPORT:** Basic Assessment for the Proposed Development of Electrical Grid Infrastructure to support the proposed nine 175 MW Solar Photovoltaic Facilities and associated Infrastructure (i.e. Witte Wall PV 1, Witte Wall PV 2, Grootfontein PV 1, Grootfontein PV 2, Grootfontein PV 3, Hoek Doornen PV 1, Hoek Doornen PV 2, Hoek Doornen PV 3, and Hoek Doornen PV 4), near Touws River, Western Cape

---

	b) on existing infrastructure.	<u>Note that GN 114 states that Applications for EA for large scale Wind and Solar PV energy facilities, when such facilities trigger Activity 1 of Listing Notice 2 of 2014 of the 2014 NEMA EIA Regulations (as amended) and any other listed and specified activities necessary for the realisation of such facilities, and where the entire proposed facility is to occur in such REDZs, must follow a BA Process, in order to obtain EA.</u>
<b>Activity 15</b>	The clearance of an area of 20 hectares or more of indigenous vegetation, excluding where such clearance of indigenous vegetation is required for:  (i) the undertaking of a linear activity; or (ii) maintenance purposes undertaken in accordance with a maintenance management plan.	The nine proposed 115 MW solar PV facilities will each have an estimated footprint of approximately 250 ha. As a result, more than 20 ha of indigenous vegetation would be removed for the construction of the proposed Solar PV facilities.  <u>Note that GN 114 states that Applications for EA for large scale Wind and Solar PV energy facilities, when such facilities trigger Activity 1 of Listing Notice 2 of 2014 of the 2014 NEMA EIA Regulations (as amended) and any other listed and specified activities necessary for the realisation of such facilities, and where the entire proposed facility is to occur in such REDZs, must follow a BA Process, in order to obtain EA.</u>

Be reminded that the onus is on the applicant to ensure that all applicable listed activities are included in the application. Environmental Authorisation must be obtained prior to commencement with each applicable listed activity.

**Note from the CSIR: The listed activities indicated above are indicative and will be confirmed subsequent to the completion of the draft specialist studies. Note that the activities in Listing Notice 2 (GN R325) have been provided, however as captured in GN 114 of February 2018, a BA Process is required for Renewable Energy Developments in the REDZ.**

## APPENDICES

**DRAFT BASIC ASSESSMENT REPORT:** Basic Assessment for the Proposed Development of Electrical Grid Infrastructure to support the proposed nine 175 MW Solar Photovoltaic Facilities and associated Infrastructure (i.e. Witte Wall PV 1, Witte Wall PV 2, Grootfontein PV 1, Grootfontein PV 2, Grootfontein PV 3, Hoek Doornen PV 1, Hoek Doornen PV 2, Hoek Doornen PV 3, and Hoek Doornen PV 4), near Touws River, Western Cape

---

### 7. ADDITIONAL INFO, IF ANY

Please attach any additional information as **APPENDIX 3**.

#### **Note from the CSIR:**

Appendix 3 of this Pre-Application Request Form includes a copy of email correspondence (dated 14 May 2020) with the IQ Department regarding generic queries on battery energy storage systems, as well as email correspondence (dated 14 May 2020) from Mr. Muhammad Essop of the DEFF regarding the planning of the BA Processes.

### 8. LIST OF APPENDICES

		SUBMITTED	
APPENDIX 1	Proposed Agenda	YES ✓	NO
APPENDIX 2	Locality map	YES ✓	NO
APPENDIX 3	Additional info	YES ✓	NO

## APPENDICES

**DRAFT BASIC ASSESSMENT REPORT:** Basic Assessment for the Proposed Development of Electrical Grid Infrastructure to support the proposed nine 175 MW Solar Photovoltaic Facilities and associated Infrastructure (i.e. Witte Wall PV 1, Witte Wall PV 2, Grootfontein PV 1, Grootfontein PV 2, Grootfontein PV 3, Hoek Doornen PV 1, Hoek Doornen PV 2, Hoek Doornen PV 3, and Hoek Doornen PV 4), near Touws River, Western Cape

---

### APPENDIX 1 PRE-APPLICATION MEETING AGENDA

*(Please note that a generic agenda will not be accepted. Please submit a detailed agenda)*

**Note from the CSIR:** This pre-application meeting request form is being submitted to discuss nine Applications for Environmental Authorisations. All applications will be discussed in one pre-application meeting in order to improve efficiency, however nine separate Applications for Environmental Authorisation will be submitted to the DEFF following the pre-application meeting. The proposed projects have the same project description and components, and they take place on adjacent farm properties. Based on this, one single combined, detailed proposed agenda for the pre-application meeting has been compiled and included below.

Item	Description	Time	Presenter
1	Welcome, Introduction and Outline of Meeting Proceedings	10H00 – 10H10	DEFF
2	Description of the proposed Witte Wall 1, Witte Wall 2, Witte Wall 3, Grootfontein 1, Grootfontein 2, Grootfontein 3, Hoek Doornen 1, Hoek Doornen 2 and Hoek Doornen 3 Solar Photovoltaic (PV) and associated infrastructure projects.  <i><u>Note from the CSIR: All nine BA Projects have identical project components, hence will be discussed collectively in order to maximize on efficiency.</u></i>	10H10 – 10H30	CSIR
3	Discussion on the specialist assessments and compliance statements to be undertaken as part of the nine BA Processes; and the associated specialist reporting	10H30 – 10H45	CSIR, DEFF and Veroniva (PTY) Ltd
4	Discussion on the approach towards including Lithium Ion Battery Energy Storage Systems in the project descriptions	10H45 – 11H05	CSIR, DEFF and Veroniva (PTY) Ltd
5	Discussion and confirmation of the proposed Public Participation Plan (PPP) which will be submitted to the DEFF for approval in terms of the Directions issued by the DEFF on 5 June 2020 in Government Notice 650 (regarding measures to prevent the spread of COVID-19 relating to National Environmental Management permits and licences).	11H05 – 11H20	CSIR, DEFF and Veroniva (PTY) Ltd
6	Discussion of the proposed schedule and overall process for the BA Processes, including applicable Listed Activities and Cumulative Impact Assessment Approach (i.e. assess cumulative impacts based on a 30 km buffer and based on Renewable Energy projects with a positive Environmental Authorisation issued at the start of this BA (i.e. 14 August 2020))	11H20 – 11H40	CSIR, DEFF and Veroniva (PTY) Ltd
7	Questions	11H40 – 11H50	CSIR, DEFF and Veroniva (PTY) Ltd
8	Way Forward and Closure	11H50 – 12H00	DEFF

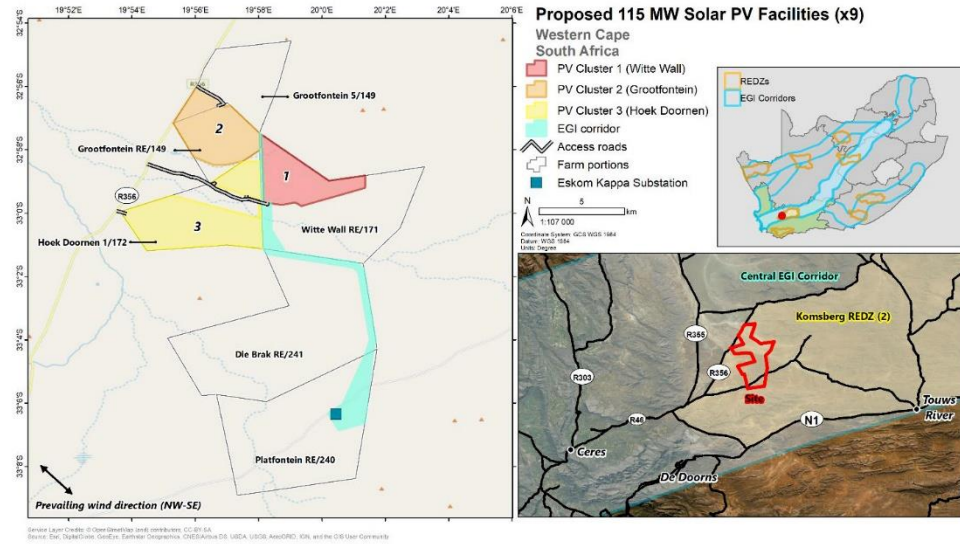


## APPENDICES

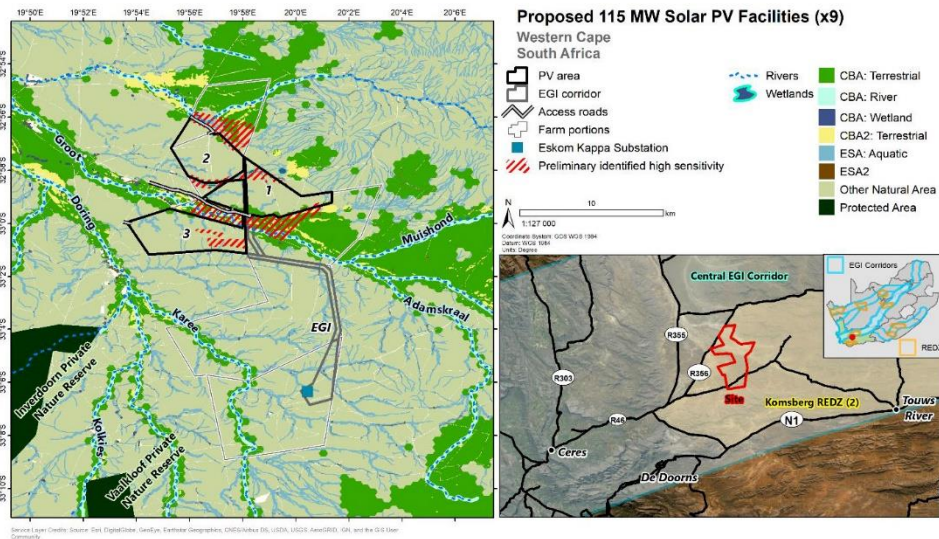
**DRAFT BASIC ASSESSMENT REPORT:** Basic Assessment for the Proposed Development of Electrical Grid Infrastructure to support the proposed nine 175 MW Solar Photovoltaic Facilities and associated Infrastructure (i.e. Witte Wall PV 1, Witte Wall PV 2, Grootfontein PV 1, Grootfontein PV 2, Grootfontein PV 3, Hoek Doornen PV 1, Hoek Doornen PV 2, Hoek Doornen PV 3, and Hoek Doornen PV 4), near Touws River, Western Cape

### APPENDIX 2 LOCALITY MAP

#### Locality Map



#### Sensitivity Map



## APPENDICES

**DRAFT BASIC ASSESSMENT REPORT:** Basic Assessment for the Proposed Development of Electrical Grid Infrastructure to support the proposed nine 175 MW Solar Photovoltaic Facilities and associated Infrastructure (i.e. Witte Wall PV 1, Witte Wall PV 2, Grootfontein PV 1, Grootfontein PV 2, Grootfontein PV 3, Hoek Doornen PV 1, Hoek Doornen PV 2, Hoek Doornen PV 3, and Hoek Doornen PV 4), near Touws River, Western Cape

---

### APPENDIX 3 ADDITIONAL INFO, IF ANY

#### APPENDIX 3.1 – CORRESPONDENCE BETWEEN DEFF IQ AND CSIR (DATED 14 MAY 2020) - GENERIC QUERIES ON BATTERY ENERGY STORAGE SYSTEMS

**From:** IQ <IQ@environment.gov.za>  
**To:** Rohaida Abed <RAbed@csir.co.za>  
**CC:** Betty Mdala <BMdala@environment.gov.za>, Muhammad Essop <MEssop@environment.gov.za>, Ignatius Guvi <iguvi@environment.gov.za>, EIAAdmin <EIAAdmin@environment.gov.za>, Millicent Solomons <MSolomons@environment.gov.za>  
**Date:** 14 May 2020 23:25  
**Subject:** IQ/20/0154: Process for Solar and Wind Facilities with a battery storage component - scenarios

Dear Rohaida,

In response to, and quoting the first part of your query, the following:

1.

Please can you clarify the following - "Assuming the Solar PV or Wind Energy Facility output is greater than 20 MW, a Scoping - EIA process can be undertaken, covering both facilities and the applicant will not get the benefit of the reduced decision-making timeframe of 57 days". Are you specifically referring here to applications for Wind and Solar outside of the REDZ, because "Assuming the Solar PV or Wind Energy Facility output is greater than 20 MW" refers to Listing Notice 2 - Activity 1, which is downscaled to a BA Process in the REDZ in GN114?"

The question posed in your query was – "Will a new proposed Solar PV or Wind Energy Facility that includes a battery storage component (which itself triggers relevant listed activities in GN R325, Listing Notice 2 requiring an EIA) that is proposed in the REDZ still fall under the ambit of GN 114 resulting in a reduced decision-making timeframe and BA Process?"

We therefore understood from your query that the battery storage component also triggers listed activities in LN2 and therefore provided the option that Scoping EIA would be required if all are to be covered in a single application.

Where a battery storage component triggers a listed activity, it would not benefit from the shortened REDZ process as it is not needed for the realization of the facility. Please note that anything in the REDZ besides a PV or Wind Energy Facility, plus road and powerline, does not meet the requirements for the shortened REDZ process.

2.

- If a battery storage component is to be included for a Solar PV or Wind Facility in the REDZ, the battery storage cannot fall under the ambit of GN 114 and will not qualify for the shortened timeframe. A separate application will need to be undertaken for the battery storage (i.e. one application for the battery storage with normal timeframes and one application for the PV or Wind facility in the REDZ with the shortened timeframe). The separate application for the battery storage may need to be submitted to the Provincial Competent Authority.

The understanding is correct.

3.

For the remaining parts of your query, blanket responses cannot be provided as the answers depend on a number of variables that would need to be considered for each specific scenario. In light of this, it is recommended that you contact EIA Admin ([EIAAdmin@environment.gov.za](mailto:EIAAdmin@environment.gov.za)) in order to set up a pre-application meeting once you have all the details regarding the specific proposal.

Regards,

Betty Mdala  
Department of Environment, Forestry and Fisheries  
Directorate: IEA: IEM Capacity & Support  
Email: [BMdala@environment.gov.za](mailto:BMdala@environment.gov.za)  
Website: <http://www.environment.gov.za>

---

**From:** Rohaida Abed <RAbed@csir.co.za>  
**Sent:** Monday, May 4, 2020 5:01 PM  
**To:** Chantal Engelbrecht  
**Cc:** Betty Mdala; IQ  
**Subject:** Re: Process for Solar and Wind Facilities with a battery storage component - scenarios IQ/20/0154

Dear Chantal

Thanks so much for your feedback, it is appreciated.

I will await feedback in 30 days.

## APPENDICES

**DRAFT BASIC ASSESSMENT REPORT:** Basic Assessment for the Proposed Development of Electrical Grid Infrastructure to support the proposed nine 175 MW Solar Photovoltaic Facilities and associated Infrastructure (i.e. Witte Wall PV 1, Witte Wall PV 2, Grootfontein PV 1, Grootfontein PV 2, Grootfontein PV 3, Hoek Doornen PV 1, Hoek Doornen PV 2, Hoek Doornen PV 3, and Hoek Doornen PV 4), near Touws River, Western Cape

---

Thanks and kind regards,

Rohaida

>>> Chantal Engelbrecht <[CEngelbrecht@environment.gov.za](mailto:CEngelbrecht@environment.gov.za)> 04 May 2020 12:55 >>>

Dear Rohaida

Apologies, for missing this query. It is rather difficult to track when the same heading is used for a new query. Kindly note that the 30 day response time applies to all queries (new and follow-up queries).

The Helpdesk will consider your query and get back to you as soon as possible.

Regards

Chantal Engelbrecht

---

**From:** Rohaida Abed [<mailto:RAbed@csir.co.za>]

**Sent:** Monday, 04 May 2020 12:38

**To:** Betty Mdala <[BMdala@environment.gov.za](mailto:BMdala@environment.gov.za)>; Chantal Engelbrecht <[CEngelbrecht@environment.gov.za](mailto:CEngelbrecht@environment.gov.za)>; IQ <[IQ@environment.gov.za](mailto:IQ@environment.gov.za)>

**Subject:** Re: RETRACTION OF RESPONSE TO IQ/19/311 ( IQ/20/0055: Follow up to IQ/19/0311: GN 114 and GN 435 - Battery Storage + REDZ)

Dear Chantal and Betty

Apologies, I am not sure if my email below delivered to you. I have now copied Betty and the IQ email.

I really look forward to your feedback.

Thanks and kind regards,

Rohaida

>>> Rohaida Abed 29 Apr 2020 17:19 >>>

Dear Chantal and Betty

Thanks for your reply and confirmation that the first part of the response sent on 10 Feb 2020 has been retracted.

Thank you for your feedback, it is appreciated.

Please can you clarify the following - "Assuming the Solar PV or Wind Energy Facility output is greater than 20 MW, a Scoping - EIA process can be undertaken, covering both facilities and the applicant will not get the benefit of the reduced decision-making timeframe of 57 days". Are you specifically referring here to applications for Wind and Solar outside of the REDZ, because "Assuming the Solar PV or Wind Energy Facility output is greater than 20 MW" refers to Listing Notice 2 - Activity 1, which is downscaled to a BA Process in the REDZ in GN114?

To ensure that I understand this, please can you confirm the following:

- If a battery storage component is to be included for a Solar PV or Wind Facility in the REDZ, the battery storage cannot fall under the ambit of GN 114 and will not qualify for the shortened timeframe. A separate application will need to be undertaken for the battery storage (i.e. one application for the battery storage with normal timeframes and one application for the PV or Wind facility in the REDZ with the shortened timeframe). The separate application for the battery storage may need to be submitted to the Provincial Competent Authority, based on the reasoning below.

- If a battery storage component is to be included for a Solar PV or Wind Facility outside of the REDZ, a single application may be submitted considering all project components (i.e. battery storage + Solar PV or Wind).

Additional Queries:

- Is battery storage considered to trigger the need for a BA or EIA Process due to the storage and handling of dangerous goods? If not, what process must be followed if the battery storage needs to be:

--- included in a new application for a Solar PV or Wind Facility? If battery storage does not trigger a listed activity, must it still be included in the project description of the BA or EIA Report for the Solar PV or Wind Facility, as well as the layout of the Solar PV or Wind Facility, and must the impacts thereof be assessed? The same could apply to internal roads of a PV or Wind Facility that fall below the threshold of a listed activity but are still included in the actual layout and assessed holistically.

--- included in an amendment application for a Solar PV or Wind Facility i.e. if an EA has already been issued for a Solar PV or Wind Facility without a battery storage component, and the applicant wants to now include a battery storage component, which itself does not trigger the need for an EA. Must an amendment to the EA and/or EMP be followed to ensure that the battery storage component is included in the project description of the EA and the layout of the EMP?



## APPENDICES

**DRAFT BASIC ASSESSMENT REPORT:** Basic Assessment for the Proposed Development of Electrical Grid Infrastructure to support the proposed nine 175 MW Solar Photovoltaic Facilities and associated Infrastructure (i.e. Witte Wall PV 1, Witte Wall PV 2, Grootfontein PV 1, Grootfontein PV 2, Grootfontein PV 3, Hoek Doornen PV 1, Hoek Doornen PV 2, Hoek Doornen PV 3, and Hoek Doornen PV 4), near Touws River, Western Cape

---

Thank you for your assistance with this. Look forward to your feedback.

Kind Regards,  
Rohaida

>>> Chantal Engelbrecht <[CEngelbrecht@environment.gov.za](mailto:CEngelbrecht@environment.gov.za)> 29 Apr 2020 14:49 >>>  
>

Dear Rohaida,

Following an internal discussion, a retraction of the previous response on the first question on your initial query on the REDZ and GN 114 (response sent on 10 February 2020) was necessitated. The response below therefore replaces Question 1 of the IQ response of 10 February 2020.

### REDZ Gazette GN 114:

- Will a new proposed Solar PV or Wind Energy Facility that includes a battery storage component (which itself triggers relevant listed activities in GN R325, Listing Notice 2 requiring an EIA) that is proposed in the REDZ still fall under the ambit of GN 114 resulting in a reduced decision-making timeframe and BA Process?

No.

A battery storage component will not fall under the ambit of GN 114 as it is not needed for the realization of the facility, i.e. it is not needed to make the Solar PV or Wind Energy Facility function. The same can apply if you want to, for example, build a PV facility and add a CSP to it. A CSP is not needed to realise a Solar PV or Wind Energy facility.

It must also be noted that when the SEA (which informed the GN 114) was done, only the Solar PV and Wind Energy facilities in the REDZ were assessed, and that is why there is no need to follow the scoping process since these impacts were pre-assessed and scoped out.

- If the battery storage component of the new Solar PV or Wind Energy Facility in the REDZ triggers Listed Activities only in Listing Notice 1 and 3 (i.e. where a BA Process would be required); what would the way forward be in the REDZ? Would one single BA application for the Renewable Energy Facility + Battery Storage be sufficient and subjected to a shortened timeframe of 57 days?

In an instance where a Solar PV or Wind Energy Facility in the REDZ + Battery Storage component is proposed, a single BA application cannot be applied for. There are various options that may be considered.

(i) Assuming the Solar PV or Wind Energy Facility output is greater than 20 MW, a Scoping – EIA process can be undertaken, covering both facilities and the applicant will not get the benefit of the reduced decision-making timeframe of 57 days.

(ii) The Solar PV or Wind Energy Facility can be applied for separately from the Battery Storage component. Consideration should be given that this may require application to different competent authorities since a Battery Storage component is not in the IRP.

Should you require further clarity, please do not hesitate to contact [EIAadmin@environment.gov.za](mailto:EIAadmin@environment.gov.za).

Regards

Betty Mdala  
Department of Environmental Affairs  
Directorate: IEA: IEM Capacity & Support  
Tel: 012 399 9289  
Email: [BMdala@environment.gov.za](mailto:BMdala@environment.gov.za)  
Website: <http://www.environment.gov.za>

---

From: Rohaida Abed <[RAbed@csir.co.za](mailto:RAbed@csir.co.za)>

Sent: Wednesday, April 15, 2020 14:11

To: Muhammad Essop <[MEssop@environment.gov.za](mailto:MEssop@environment.gov.za)>; Millicent Solomons <[MSolomons@environment.gov.za](mailto:MSolomons@environment.gov.za)>

Subject: Fwd: IQ/20/0055: Follow up to IQ/19/0311: GN 114 and GN 435 - Battery Storage + REDZ

Dear Mr. Essop and Ms. Solomons

I trust that you are well during these trying times.

Please kindly refer to the email below regarding feedback from the DEFF IQ Department in terms of proposed battery storage associated with proposed wind or solar plants in the REDZ.

Please let us know if the IEA department agrees with these views or if there are any contrary views regarding this?



## APPENDICES

**DRAFT BASIC ASSESSMENT REPORT:** Basic Assessment for the Proposed Development of Electrical Grid Infrastructure to support the proposed nine 175 MW Solar Photovoltaic Facilities and associated Infrastructure (i.e. Witte Wall PV 1, Witte Wall PV 2, Grootfontein PV 1, Grootfontein PV 2, Grootfontein PV 3, Hoek Doornen PV 1, Hoek Doornen PV 2, Hoek Doornen PV 3, and Hoek Doornen PV 4), near Touws River, Western Cape

---

We have conveyed this information to our client to guide their planning and way forward.

We look forward to your feedback.

Thank you and kind regards,  
Rohaida

CSR - Environmental Management Services  
P. O. Box 17001, Congella, Durban, 4013  
Tel: 031 242 2318  
Fax: 031 261 2509  
Email: [rabed@csr.co.za](mailto:rabed@csr.co.za)  
>>> IQ <[IQ@environment.gov.za](mailto:IQ@environment.gov.za)> 06 Apr 2020 23:38 >>>  
Dear Rohaida,

Herewith the inline responses (in blue) to your follow-up email below.

Regards

Betty Mdala  
Department of Environmental Affairs  
Directorate: IEA: IEM Capacity & Support  
Tel: 012 399 9289  
Email: [BMdala@environment.gov.za](mailto:BMdala@environment.gov.za)  
Website: <http://www.environment.gov.za>

---

**From:** Rohaida Abed [<mailto:RAbed@csr.co.za>]  
**Sent:** Tuesday, 11 February 2020 10:43  
**To:** IQ <[IQ@environment.gov.za](mailto:IQ@environment.gov.za)>  
**Subject:** Re: IQ/19/0311: GN 114 and GN 435

Dear Betty

Thank you very much for your feedback, it is greatly appreciated.

With regards to the query on Battery Storage and GN 114, is this the confirmed position from the DEFF on the matter?

Yes.

With regards to the EGI and Substations Generic EMPr GN 435 query, it should be noted that GN 435 states that the template in this section i.e. pre-approved EMPr template contained in Part B - Section 1, "is to be **completed by the contractor**, with each completed page signed and dated by the **holder of the EA prior to commencement of the activity**". This means that the Contractor must complete the following sections of the tables contained in Part B - Section 1 in order to meet the pre-approved and stipulated impact management outcomes and management actions as identified and pre-approved by the DEFF:

*For implementation*  
- a 'responsible person',  
- a method for implementation,  
- a timeframe for implementation

*For monitoring*  
- a responsible person  
- frequency  
- evidence of compliance

Considering that the Contractor will only be appointed after the EA is issued, the above sections of the tables contained in Part B - Section 1 can only be completed after the EA is issued. GN 435 further states that "once completed and signed, the template represents the EMPr for the activity approved by the CA and is legally binding. The template is not required to be submitted to the CA as once the generic EMPr is gazetted for implementation, it has been approved by the CA". Based on this, the pre-approved template contained in Part B - Section 1 will be made available to IRAPs for information purposes only as currently contained in GN 435 i.e. with only the impact management outcomes and actions stipulated. Kindly confirm?

## APPENDICES

**DRAFT BASIC ASSESSMENT REPORT:** Basic Assessment for the Proposed Development of Electrical Grid Infrastructure to support the proposed nine 175 MW Solar Photovoltaic Facilities and associated Infrastructure (i.e. Witte Wall PV 1, Witte Wall PV 2, Grootfontein PV 1, Grootfontein PV 2, Grootfontein PV 3, Hoek Doornen PV 1, Hoek Doornen PV 2, Hoek Doornen PV 3, and Hoek Doornen PV 4), near Touws River, Western Cape

---

Section 1 can only be completed after the EA is issued and prior to commencement of the activity; however the pre-approved EMPr must be made available to I&APs during the comment period.

If Part C of the Generic EMPr is required, GN 435 states the following:

*"If any specific environmental sensitivities/attributes are present on the site which require site specific impact management outcomes and impact management actions, not included in the pre-approved generic EMPr, to manage impacts, these **specific impact management outcomes and impact management actions must be included in this section.** These specific environmental attributes must be referenced spatially and **impact management outcomes and impact management actions must be provided.** These specific **impact management outcomes and impact management actions** must be presented in the format of the preapproved EMPr template (Part B: section 1)".*

In addition, GN 435 states *"The content of an EMPr must either contain the information set out in **Appendix 4 of the Environmental Impact Assessment Regulations, 2014, as amended, (EIA Regulations) or must be a generic EMPr relevant to an application as identified and gazetted by the Minister in a government notice.** Once the Minister has identified, through a government notice, that a generic EMPr is relevant to an application for EA, that generic EMPr must be applied by all parties involved in the EA process, including, but not limited to, the applicant and the competent authority (CA)".* This is in line with Section 2 of Appendix 4 of the EIA Regulations and Section 19(4) and 23(4) of the EIA Regulations. Therefore, any EGI and Substation development in SA that trigger the stipulated listed activities in Listing Notices 1 and 2 (see the schedule of GN435) must comply with the Generic EMPr i.e. GN 435, and not Appendix 4?

Applications for environmental authorisation for substation and overhead electricity transmission and distribution infrastructure, when such facilities trigger activity 11 or 47 of LN1, Activity 9 of LN2 and any other listed or specified activities of the 2014 EIA Regulations necessary for the realisation of such facilities, must use the generic Environmental Management Programme.

Based on the above, must all columns of the pre-approved EMPr template still be completed if Part C is required?

If Part C is required, the impact management outcomes and impact management actions must be provided. The columns under the headings, "Implementation" and "Monitoring" can only be completed after the EA is issued.

I look forward to your feedback.

Thank you and kind regards,  
Rohaida

CSIR - Environmental Management Services  
P. O. Box 17001, Congella, Durban, 4013  
Tel: 031 242 2318  
Fax: 031 261 2509  
Email: [rahed@csir.co.za](mailto:rahed@csir.co.za)  
>>> IQ <[ra@environment.gov.za](mailto:ra@environment.gov.za)> 2020/02/10 10:22 >>>

Dear Rohaida

Apologies for the late response to your query below. Please note the inline responses (in blue) below.

### 1. REDZ Gazette GN 114:

- Will a new proposed Solar PV or Wind Energy Facility that includes a battery storage component (which itself triggers relevant listed activities in GN R325, Listing Notice 2 requiring an EIA) that is proposed in the REDZ still fall under the ambit of GN 114 resulting in a reduced decision-making timeframe and BA Process?

GN 114 will apply where the following are present:-

- Application for environmental authorization when such facilities trigger Activity 1 of Listing Notice 2 of the EIA Regulations 2014, as amended;
- Large scale wind or solar photovoltaic energy facilities that trigger Activity 1 of Listing Notice 2 of the EIA Regulations 2014, as amended;
- **Any other listed or specified activity for the realization of the facility;** and
- the entire proposed facility occurs within the REDZ.

As the battery storage component is for the realization of the facility, it should be included in the same application process as the solar PV or Wind Energy facility, and will be processed by the CA using the reduced decision-making timeframe.

- If the battery storage component of the new Solar PV or Wind Energy Facility in the REDZ triggers Listed Activities only in Listing Notice 1 and 3 (i.e. where a BA Process would be required); what would the way forward be in the REDZ? Would one single BA application for the

## APPENDICES

**DRAFT BASIC ASSESSMENT REPORT:** Basic Assessment for the Proposed Development of Electrical Grid Infrastructure to support the proposed nine 175 MW Solar Photovoltaic Facilities and associated Infrastructure (i.e. Witte Wall PV 1, Witte Wall PV 2, Grootfontein PV 1, Grootfontein PV 2, Grootfontein PV 3, Hoek Doornen PV 1, Hoek Doornen PV 2, Hoek Doornen PV 3, and Hoek Doornen PV 4), near Touws River, Western Cape

---

Renewable Energy Facility + Battery Storage be sufficient and subjected to a shortened timeframe of 57 days?

Yes.

2. EGI and Substations Generic EMPr GN 435 - Page 2 of the Generic EMPr states "To allow interested and affected parties access to the pre-approved EMPr template for consideration through the decision-making process, the EAP on behalf of the applicant /proponent must make the hard copy of this EMPr available at a public location and where the applicant has a website, the EMPr should also be made available on such publicly accessible website."

Please can you confirm - must this be undertaken when the Draft BA Report or Draft EIA Report is being released for comment? Since the Generic EMPr pre-approved template has already been gazetted for comment and then implementation, would the purpose of the above be for information purposes? Does the above refer to the pre-approved EMPr template contained in Part B - Section 1, which is not yet completed by the Contractor and signed on every page?

Yes. The Generic EMPr must be provided to the I&APs during the 30-day comment period. Although the template is pre-approved, I&APs must still be allowed to consider the EMPr in its entirety. Although Part B-Section 1 of the Generic EMPr will only be signed and dated by the contractor prior to commencement of the activity, the document should still be subjected to the I&APs for comment.

3. EGI and Substations Generic EMPr GN 435 - If the site-specific EMPr applies i.e. Part C, it must follow the same format as Part B - Section 1. In this case, must all columns be populated or just the Impact Management Outcome and Impact Management Actions sections?

Yes. All columns must be populated as also done in Part B – Section 1 and in line with the requirements of Appendix 4 of the 2014 NEMA EIA Regulations, as amended.

Betty Mdala  
Department of Environmental Affairs  
Directorate: IEA: IEM Capacity & Support  
Tel: 012 399 9289  
Email: [BMdala@environment.gov.za](mailto:BMdala@environment.gov.za)  
Website: <http://www.environment.gov.za>

---

**From:** Rohaida Abed [<mailto:RAbed@csir.co.za>]  
**Sent:** Friday, 22 November 2019 09:25  
**To:** IQ <[IQ@environment.gov.za](mailto:IQ@environment.gov.za)>  
**Cc:** Chantal Engelbrecht <[CEngelbrecht@environment.gov.za](mailto:CEngelbrecht@environment.gov.za)>; Franz Scheepers <[FScheepers@environment.gov.za](mailto:FScheepers@environment.gov.za)>  
**Subject:** RE: Query GN 114 and GN 435

Good day IQ Helpdesk

Please can I add one more follow up point below regarding Query 1:

1. REDZ Gazette GN 114:

- Will a new proposed Solar PV or Wind Energy Facility that includes a battery storage component (which itself triggers relevant listed activities in GN R325, Listing Notice 2 requiring an EIA) that is proposed in the REDZ still fall under the ambit of GN 114 resulting in a reduced decision-making timeframe and BA Process?

- If the battery storage component of the new Solar PV or Wind Energy Facility in the REDZ triggers Listed Activities only in Listing Notice 1 and 3 (i.e. where a BA Process would be required); what would the way forward be in the REDZ? Would one single BA application for the Renewable Energy Facility + Battery Storage be sufficient and subjected to a shortened timeframe of 57 days?

Thank you for your assistance with this.

Thank you and kind regards,  
Rohaida

Tel: 031 242 2318  
>>> Rohaida Abed 21/11/2019 13:54 >>>  
Dear Franz

Thank you very much. Look forward to feedback from the IQ Helpdesk.

Kind Regards,



## APPENDICES

**DRAFT BASIC ASSESSMENT REPORT:** Basic Assessment for the Proposed Development of Electrical Grid Infrastructure to support the proposed nine 175 MW Solar Photovoltaic Facilities and associated Infrastructure (i.e. Witte Wall PV 1, Witte Wall PV 2, Grootfontein PV 1, Grootfontein PV 2, Grootfontein PV 3, Hoek Doornen PV 1, Hoek Doornen PV 2, Hoek Doornen PV 3, and Hoek Doornen PV 4), near Touws River, Western Cape

---

Rohaida

>>> Franz Scheepers <[FScheepers@environment.gov.za](mailto:FScheepers@environment.gov.za)> 21/11/2019 13:22 >>>

Dear Rohaida

The IQ helpdesk copied to this e-mail will respond on all 3 queries.

Franz Scheepers

Environmental Control Officer:

LACE: Capacity and Support: External IEM Support

Environment House

Chr. Slave Biko and Soutpansberg Road, Pretoria

Cell: 061 664 3354

Tel: 012 299 9285

---

From: Rohaida Abed (<mailto:RAbed@csir.co.za>)

Sent: Thursday, 21 November 2019 13:19

To: Chantal Engelbrecht; Franz Scheepers

Subject: Query GN 114 and GN 435

Good day Mr Scheepers and Ms. Engelbrecht

I hope that you are well. We spoke at the EIA Seminar in Empangeni in September this year. Thanks for all your feedback during the seminar.

Would you be able to please provide feedback on the following:

1. REDZ Gazette GN 114 - Will a proposed Solar PV or Wind Energy Facility that includes a battery storage component (which itself triggers relevant listed activities in GN R325) still fall under the ambit of GN 114 resulting in a reduced decision-making timeframe and BA Process?

2. EGI and Substations Generic EMPr GN 435 - Page 2 of the Generic EMPr states "To allow interested and affected parties access to the pre-approved EMPr template for consideration through the decision-making process, the EAP on behalf of the applicant /proponent must make the hard copy of this EMPr available at a public location and where the applicant has a website, the EMPr should also be made available on such publicly accessible website."

Please can you confirm - must this be undertaken when the Draft BA Report or Draft EIA Report is being released for comment? Since the Generic EMPr pre-approved template has already been gazetted for comment and then implementation, would the purpose of the above be for information purposes? Does the above refer to the pre-approved EMPr template contained in Part B - Section 1, which is not yet completed by the Contractor and signed on every page?

3. EGI and Substations Generic EMPr GN 435 - If the site-specific EMPr applies i.e. Part C, it must follow the same format as Part B - Section 1. In this case, must all columns be populated or just the Impact Management Outcome and Impact Management Actions sections?

Thank you and kind regards,

Rohaida

CSIR - Environmental Management Services

P. O. Box 17001, Congella, Durban, 4013

Tel: 031 242 2318

Fax: 031 261 2509

Email: [rabad@csir.co.za](mailto:rabad@csir.co.za)

'Please consider the environment before you print this email'

'Please consider the environment before you print this email'

'Please consider the environment before you print this email'

This message and any attachments transmitted with it are intended solely for the addressee(s) and may be legally privileged and/or confidential. If you have received this message in error please destroy it and notify the sender. Any unauthorized usage, disclosure, alteration or dissemination is prohibited. The Department of Environmental Affairs accepts no responsibility for any loss whether it be direct, indirect or consequential, arising from information made available and actions resulting there from. The views and opinions expressed in this e-mail message may not necessarily be those of Management.

## APPENDICES

**DRAFT BASIC ASSESSMENT REPORT:** Basic Assessment for the Proposed Development of Electrical Grid Infrastructure to support the proposed nine 175 MW Solar Photovoltaic Facilities and associated Infrastructure (i.e. Witte Wall PV 1, Witte Wall PV 2, Grootfontein PV 1, Grootfontein PV 2, Grootfontein PV 3, Hoek Doornen PV 1, Hoek Doornen PV 2, Hoek Doornen PV 3, and Hoek Doornen PV 4), near Touws River, Western Cape

---

### APPENDIX 3.2 – CORRESPONDENCE BETWEEN DEFF AND CSIR (DATED 14 MAY 2020) – PLANNING OF THE BA PROCESSES

**From:** Muhammad Essop <MEssop@environment.gov.za>  
**To:** Rohaida Abed <RAbed@csir.co.za>, IQ <IQ@environment.gov.za>, "MillicentSolomons" <MSolomons@environment.gov.za>  
**Date:** 14 May 2020 22:02  
**Subject:** RE: Query on Planning of Suite of BA Projects in the Komsberg REDZ

Hi Rohaida,

Can you give me a call on Monday to discuss this. My cell number is 0769242494.

My advice is that you submit a request for a pre-application meeting and this can all be discussed and agreed to in the pre-app meeting. We are conducting those virtually.

Regards

*Muhammad Essop*

Assistant Director - Strategic Infrastructure Developments  
Integrated Environmental Authorisations  
Department of Environmental Affairs  
Private Bag X447  
Pretoria  
0001  
☎ (012) 399 9406  
✉ [MEssop@environment.gov.za](mailto:MEssop@environment.gov.za)

---

**From:** Rohaida Abed <RAbed@csir.co.za>  
**Sent:** Wednesday, April 29, 2020 12:26  
**To:** IQ <IQ@environment.gov.za>; Muhammad Essop <MEssop@environment.gov.za>; Millicent Solomons <MSolomons@environment.gov.za>  
**Subject:** Query on Planning of Suite of BA Projects in the Komsberg REDZ

Dear IQ Department, Ms. Solomons and Mr. Essop

We hope that you are well. We have a general query on planning of the EA Processes for a potential suite of 12 Solar PV projects in the Komsberg REDZ.

The proposed Solar PV projects will be subjected to a BA Process in line with GN 114.

The proposed projects will be constructed on four farm portions that occur in the same area completely within the Komsberg REDZ. Three farm portions are completely adjacent to each other, and the fourth farm portion is about 20 km away.

Each farm portion will have 3 proposed Solar PV projects. In terms of electricity grid infrastructure, the best case is that there will be one power line and collector substation per 3 PV projects.

We are planning the way forward for the BAs and we have been made aware that if a combined assessment process is done and for example if 4 EAs are issued (i.e. one EA covers 3 PV projects), if the Applicant wishes to split the EAs later into 12 separate EAs, it would comprise a **substantive amendment**. Please can you confirm if this is correct? We understand that the main reasoning for this is that each split project requires a separate assessment of the project specific impacts, a stand-alone Environmental Management Programme and an indication of what conditions contained within the original EA would be applicable to each of the split projects.

We therefore need to determine if there is a feasible and environmentally responsible way of ensuring 12 separate EAs upfront (should they be granted) instead of going the substantive amendment route later.

Would the following be suitable, in principle:

- Compile 12 separate Application Forms
- Compile 4 separate BA Reports, with each BA Report having separate clear sections for the impacts pertaining to each PV facility and electricity grid infrastructure. The same would apply to each specialist study, i.e. there would be four biodiversity specialist assessments, with each assessment report covering 3 proposed Solar PV Projects and the associated electricity grid infrastructure. We will take the gazetted assessment protocols into consideration as well.
- Compile 12 separate Environmental Management Programmes for each PV facility and the associated electricity grid infrastructure.

The reason for this would be to improve efficiency but still maintain the highest levels of environmental rigour, and also reduce the amount of hard copies needed i.e. 4 BA Reports as opposed to 12 BA Reports.

It also costs a significant amount for the applicant to register 12 new companies and keep them valid from commencement of the EA process to the

## APPENDICES

**DRAFT BASIC ASSESSMENT REPORT:** Basic Assessment for the Proposed Development of Electrical Grid Infrastructure to support the proposed nine 175 MW Solar Photovoltaic Facilities and associated Infrastructure (i.e. Witte Wall PV 1, Witte Wall PV 2, Grootfontein PV 1, Grootfontein PV 2, Grootfontein PV 3, Hoek Doornen PV 1, Hoek Doornen PV 2, Hoek Doornen PV 3, and Hoek Doornen PV 4), near Touws River, Western Cape

---

IPP bidding process to serve as applicants for each application. In this case, would it be possible to have the parent company as the applicant, and then later follow a non-substantive amendment to change the parent company to a new CC that is a subsidiary of the parent company? This speaks to Regulation 29 (b) of the 2014 NEMA EIA Regulations (as amended).

Thanks for your consideration of the above, we look forward to your feedback.

Thanks and kind regards,  
Rohaida

CSIR - Environmental Management Services  
P. O. Box 17001, Congella, Durban, 4013  
Tel: 031 242 2318  
Fax: 031 261 2509  
Email: [rahed@csir.co.za](mailto:rahed@csir.co.za)

'Please consider the environment before you print this email'  
'Please consider the environment before you print this email'

This message and any attachments transmitted with it are intended solely for the addressee(s) and may be legally privileged and/or confidential. If you have received this message in error please destroy it and notify the sender. Any unauthorized usage, disclosure, alteration or dissemination is prohibited. The Department of Environmental Affairs accepts no responsibility for any loss whether it be direct, indirect or consequential, arising from information made available and actions resulting there from. The views and opinions expressed in this e-mail message may not necessarily be those of Management.

## APPENDICES

**DRAFT BASIC ASSESSMENT REPORT:** Basic Assessment for the Proposed Development of Electrical Grid Infrastructure to support the proposed nine 175 MW Solar Photovoltaic Facilities and associated Infrastructure (i.e. Witte Wall PV 1, Witte Wall PV 2, Grootfontein PV 1, Grootfontein PV 2, Grootfontein PV 3, Hoek Doornen PV 1, Hoek Doornen PV 2, Hoek Doornen PV 3, and Hoek Doornen PV 4), near Touws River, Western Cape

## APPENDIX I.2: PRE-APPLICATION MEETING PRESENTATION

04/11/2020

**Basic Assessments for the Proposed Development of nine 175 MW Solar Photovoltaic Facilities and associated Electrical Grid Infrastructure (i.e. Witte Wall 1; Witte Wall 2; Witte Wall 3; Grootfontein 1; Grootfontein 2; Grootfontein 3; Hoek Doornen 1; Hoek Doornen 2; Hoek Doornen 3), near Touws River, Western Cape**

Pre-Application Meeting with the DEFF

25 August 2020  
10H00 – 12H00

**CSIR**  
*our future through science*

### Meeting Agenda

Item	Description	Time	Presenter
1	Welcome, Introduction and Outline of Meeting Proceedings	10H00 – 10H10	DEFF
2	Description of the proposed Witte Wall 1, Witte Wall 2, Witte Wall 3, Grootfontein 1, Grootfontein 2, Grootfontein 3, Hoek Doornen 1, Hoek Doornen 2 and Hoek Doornen 3 Solar Photovoltaic (PV) and associated infrastructure projects.	10H10 – 10H30	CSIR
3	Discussion on the specialist assessments and compliance statements to be undertaken as part of the nine BA Processes; and the associated specialist reporting	10H30 – 10H45	All
4	Discussion on the approach towards including Lithium Ion Battery Energy Storage Systems in the project descriptions	10H45 – 11H05	All
5	Discussion and confirmation of the proposed Public Participation Plan (PPP)	11H05 – 11H20	All
6	Discussion of the proposed schedule and overall process for the BA Processes, including Cumulative Impact Assessment Approach	11H20 – 11H40	All
7	Questions	11H40 – 11H50	All
8	Way Forward and Closure	11H50 – 12H00	DEFF

**CSIR**  
*our future through science*

2

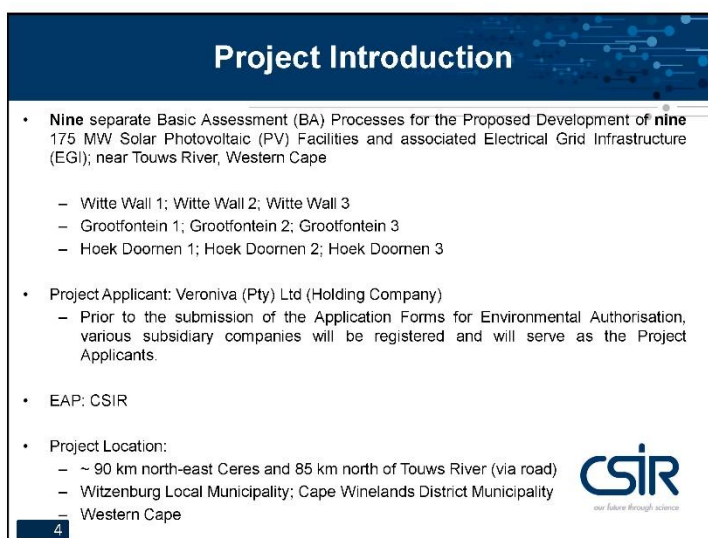


## APPENDICES

**DRAFT BASIC ASSESSMENT REPORT:** Basic Assessment for the Proposed Development of Electrical Grid Infrastructure to support the proposed nine 175 MW Solar Photovoltaic Facilities and associated Infrastructure (i.e. Witte Wall PV 1, Witte Wall PV 2, Grootfontein PV 1, Grootfontein PV 2, Grootfontein PV 3, Hoek Doornen PV 1, Hoek Doornen PV 2, Hoek Doornen PV 3, and Hoek Doornen PV 4), near Touws River, Western Cape

---

04/11/2020



2

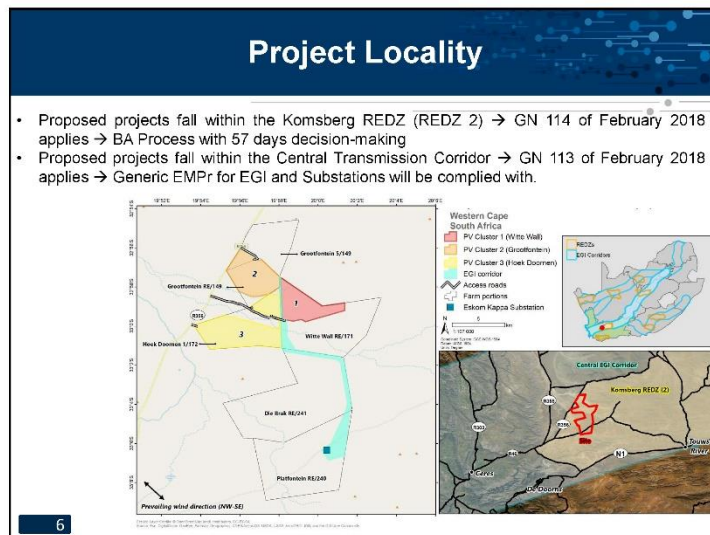
## APPENDICES

**DRAFT BASIC ASSESSMENT REPORT:** Basic Assessment for the Proposed Development of Electrical Grid Infrastructure to support the proposed nine 175 MW Solar Photovoltaic Facilities and associated Infrastructure (i.e. Witte Wall PV 1, Witte Wall PV 2, Grootfontein PV 1, Grootfontein PV 2, Grootfontein PV 3, Hoek Doornen PV 1, Hoek Doornen PV 2, Hoek Doornen PV 3, and Hoek Doornen PV 4), near Touws River, Western Cape

04/11/2020

Affected Farm Portions		
Projects	Farm Portions – PV Facility and Associated Infrastructure	Farm Portions - EGI
Witte Wall 1 Witte Wall 2 Witte Wall 3	<ul style="list-style-type: none"> <li>• Remainder of Witte Wall Farm 171</li> </ul>	<ul style="list-style-type: none"> <li>• Remainder of Witte Wall Farm 171</li> <li>• Remainder of Die Brak Farm 241</li> <li>• Remainder of Platfontein Farm 240</li> </ul>
Grootfontein 1 Grootfontein 2 Grootfontein 3	<ul style="list-style-type: none"> <li>• Remainder of Grootfontein Farm 149</li> <li>• Portion 5 of Grootfontein Farm 149</li> </ul>	<p>Alternative 1:</p> <ul style="list-style-type: none"> <li>• Remainder of Grootfontein Farm 149</li> <li>• Portion 5 of Grootfontein Farm 149</li> <li>• Remainder of Witte Wall Farm 171</li> <li>• Remainder of Die Brak Farm 241</li> <li>• Remainder of Platfontein Farm 240</li> </ul> <p>Alternative 2:</p> <ul style="list-style-type: none"> <li>• Portion 1 of Hoek Doornen Farm 172</li> <li>• Remainder of Die Brak Farm 241</li> <li>• Remainder of Platfontein Farm 240</li> </ul>
Hoek Doornen 1 Hoek Doornen 2 Hoek Doornen 3	<ul style="list-style-type: none"> <li>• Portion 1 of Hoek Doornen Farm 172</li> </ul>	<ul style="list-style-type: none"> <li>• Portion 1 of Hoek Doornen Farm 172</li> <li>• Remainder of Witte Wall Farm 171</li> <li>• Remainder of Die Brak Farm 241</li> <li>• Remainder of Platfontein Farm 240</li> </ul>

5



6

## APPENDICES

**DRAFT BASIC ASSESSMENT REPORT:** Basic Assessment for the Proposed Development of Electrical Grid Infrastructure to support the proposed nine 175 MW Solar Photovoltaic Facilities and associated Infrastructure (i.e. Witte Wall PV 1, Witte Wall PV 2, Grootfontein PV 1, Grootfontein PV 2, Grootfontein PV 3, Hoek Doornen PV 1, Hoek Doornen PV 2, Hoek Doornen PV 3, and Hoek Doornen PV 4), near Touws River, Western Cape

---

04/11/2020

<b>Project Description</b>		
No.	BA Project	Infrastructure to be Assessed
1	Witte Wall 1	<ul style="list-style-type: none"> <li>• Solar PV Facility</li> <li>• 1 * Power Line</li> <li>• 1 * On-Site Substation</li> <li>• Associated Infrastructure (Access Roads, Internal Roads, Building Infrastructure, Lithium Ion Battery Energy Storage System etc.)</li> </ul>
2	Witte Wall 2	<ul style="list-style-type: none"> <li>• Solar PV Facility</li> <li>• 1 * Power Line</li> <li>• 1 * On-Site Substation</li> <li>• Associated Infrastructure (Access Roads, Internal Roads, Building Infrastructure, Lithium Ion Battery Energy Storage System etc.)</li> </ul>
3	Witte Wall 3	<ul style="list-style-type: none"> <li>• Solar PV Facility</li> <li>• 1 * Power Line</li> <li>• 1 * On-Site Substation</li> <li>• Associated Infrastructure (Access Roads, Internal Roads, Building Infrastructure, Lithium Ion Battery Energy Storage System etc.)</li> </ul>

7

<b>Project Description</b>		
No.	BA Project	Infrastructure to be Assessed
4	Grootfontein 1	<ul style="list-style-type: none"> <li>• Solar PV Facility</li> <li>• 1 * Power Line</li> <li>• 1 * On-Site Substation</li> <li>• Associated Infrastructure (Access Roads, Internal Roads, Building Infrastructure, Lithium Ion Battery Energy Storage System etc.)</li> </ul>
5	Grootfontein 2	<ul style="list-style-type: none"> <li>• Solar PV Facility</li> <li>• 1 * Power Line</li> <li>• 1 * On-Site Substation</li> <li>• Associated Infrastructure (Access Roads, Internal Roads, Building Infrastructure, Lithium Ion Battery Energy Storage System etc.)</li> </ul>
6	Grootfontein 3	<ul style="list-style-type: none"> <li>• Solar PV Facility</li> <li>• 1 * Power Line</li> <li>• 1 * On-Site Substation</li> <li>• Associated Infrastructure (Access Roads, Internal Roads, Building Infrastructure, Lithium Ion Battery Energy Storage System etc.)</li> </ul>

8

## APPENDICES

**DRAFT BASIC ASSESSMENT REPORT:** Basic Assessment for the Proposed Development of Electrical Grid Infrastructure to support the proposed nine 175 MW Solar Photovoltaic Facilities and associated Infrastructure (i.e. Witte Wall PV 1, Witte Wall PV 2, Grootfontein PV 1, Grootfontein PV 2, Grootfontein PV 3, Hoek Doornen PV 1, Hoek Doornen PV 2, Hoek Doornen PV 3, and Hoek Doornen PV 4), near Touws River, Western Cape

04/11/2020

Project Description		
No.	BA Project	Infrastructure to be Assessed
7	Hoek Doornen 1	<ul style="list-style-type: none"> <li>• Solar PV Facility</li> <li>• 1 * Power Line</li> <li>• 1 * On-Site Substation</li> <li>• Associated Infrastructure (Access Roads, Internal Roads, Building Infrastructure, Lithium Ion Battery Energy Storage System etc.)</li> </ul>
8	Hoek Doornen 2	<ul style="list-style-type: none"> <li>• Solar PV Facility</li> <li>• 1 * Power Line</li> <li>• 1 * On-Site Substation</li> <li>• Associated Infrastructure (Access Roads, Internal Roads, Building Infrastructure, Lithium Ion Battery Energy Storage System etc.)</li> </ul>
9	Hoek Doornen 3	<ul style="list-style-type: none"> <li>• Solar PV Facility</li> <li>• 1 * Power Line</li> <li>• 1 * On-Site Substation</li> <li>• Associated Infrastructure (Access Roads, Internal Roads, Building Infrastructure, Lithium Ion Battery Energy Storage System etc.)</li> </ul>

- Each of the BA Reports for the 9 PV facilities will assess a dedicated 132 kV power line that will connect the proposed facility to the Eskom Substation.
- This will ensure that each project (should it receive positive EA), is a viable stand-alone project in terms of the REI4P. This approach is based on the worst case scenario.
- In terms of the best case scenario, depending on how many projects receive positive EAs and preferred bidder status in terms of the REI4P, then all 9 separate power lines will not be constructed. Instead, a reduced number of power lines will be constructed within the assessed power corridor.

9

Project Description	
<ul style="list-style-type: none"> <li>• Development Footprint: 250 hectares</li> <li>• Export Capacity: Up to 175 MW</li> <li>• Proposed Technology: PV Solar</li> <li>• PV Structure height: Maximum 10 m</li> </ul>	132 kV Power Lines from the PV Facilities to the Eskom Kappa Substation: <ul style="list-style-type: none"> <li>• Corridor will be assessed by the specialists (300 m wide and 20 – 23 km long)</li> <li>• Height = 22.5 m to 30 m</li> <li>• Servitude width = 33 m</li> </ul>
Possible tracking and mounting systems (galvanized steel and aluminium): <ul style="list-style-type: none"> <li>• Single axis tracking systems</li> <li>• Fixed axis tracking systems</li> <li>• Dual axis tracking systems</li> <li>• Fixed tilt mounting structures</li> <li>• Bifacial solar modules</li> </ul>	<ul style="list-style-type: none"> <li>• 33 kV internal power lines or underground cables</li> <li>• Underground low voltage cables or trays</li> </ul>
Building infrastructure: Offices, O&M Centre, Workshop, Ablutions, Inverter/Converter Stations, Guard Houses (Maximum height: 7 m)	Associated electrical infrastructure at the Eskom Kappa Substation (including but not limited to feeders, Busbars, new transformer bay (up to 500 MVA) and extension to the platform at the Eskom Kappa Substation)
On-Site Substations (Maximum height 15 m and Footprint: 20 000 m <sup>2</sup> )	Lithium Ion Battery Energy Storage System (BESS): <ul style="list-style-type: none"> <li>• Area of ~ up to 8 hectares</li> <li>• Height of ~ 5 – 10 m</li> <li>• Capacity of approximately 400 - 600 MW/hour</li> </ul>

10

## APPENDICES

**DRAFT BASIC ASSESSMENT REPORT:** Basic Assessment for the Proposed Development of Electrical Grid Infrastructure to support the proposed nine 175 MW Solar Photovoltaic Facilities and associated Infrastructure (i.e. Witte Wall PV 1, Witte Wall PV 2, Grootfontein PV 1, Grootfontein PV 2, Grootfontein PV 3, Hoek Doornen PV 1, Hoek Doornen PV 2, Hoek Doornen PV 3, and Hoek Doornen PV 4), near Touws River, Western Cape

04/11/2020

Project Description	
<p><b>Access roads:</b></p> <ul style="list-style-type: none"> <li>• Width ranging between 4 - 8 m.</li> <li>• Total Length: ~ 7 km for Witte Wall PV Project, ~ 2 km for Grootfontein PV Project; and ~ 1 km for Hoek Doornen PV Project.</li> </ul>	<p><b>Panel maintenance and cleaning area</b></p>
<p><b>Internal gravel roads and service roads below the power line:</b></p> <ul style="list-style-type: none"> <li>• Width of 4 m</li> </ul>	<p><b>Stormwater channels</b> (Details to be confirmed once the Engineering, Procurement and Construction (EPC) contractor has been selected and the design is finalized).</p>
<p><b>Fencing:</b></p> <ul style="list-style-type: none"> <li>• Between 2 – 3 m high around the PV Facilities</li> <li>• Type of fencing will either be of palisade, mesh type or a fully electrified option</li> <li>• Game fences will also be constructed around each PV facility on the Witte Wall Farm</li> </ul>	<p><b>Water:</b></p> <ul style="list-style-type: none"> <li>• To be sourced from the municipality via tankers and stored on site</li> <li>• No water is planned to be abstracted from or discharged to any surface water systems</li> </ul>
<p><b>Fencing for the power corridors:</b></p> <ul style="list-style-type: none"> <li>• Game fences will be constructed along the power line route to fence off the servitudes across the farms Witte Wall, Grootfontein and Die Brak</li> <li>• No fencing will be constructed along the power line where it traverses the Platfontein Farm</li> </ul>	<ul style="list-style-type: none"> <li>• Construction work area (i.e. laydown area of maximum 5 ha)</li> <li>• Construction Period: 12 to 14 months</li> </ul>

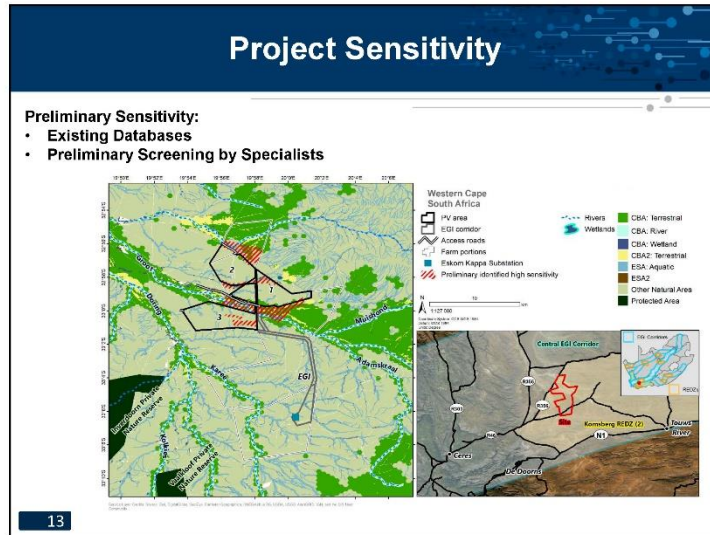
11



## APPENDICES

**DRAFT BASIC ASSESSMENT REPORT:** Basic Assessment for the Proposed Development of Electrical Grid Infrastructure to support the proposed nine 175 MW Solar Photovoltaic Facilities and associated Infrastructure (i.e. Witte Wall PV 1, Witte Wall PV 2, Grootfontein PV 1, Grootfontein PV 2, Grootfontein PV 3, Hoek Doornen PV 1, Hoek Doornen PV 2, Hoek Doornen PV 3, and Hoek Doornen PV 4), near Touws River, Western Cape

04/11/2020



### National DEFF Screening Tool - Themes

Theme	VH	H	M	L
Aquatic Biodiversity Theme	<ul style="list-style-type: none"> <li>• Witte Wall 1, 2 and 3</li> <li>• Grootfontein 1, 2 and 3</li> </ul>			
Landscape (Solar) Theme				
Terrestrial Biodiversity Theme	<ul style="list-style-type: none"> <li>• Hoekdoornen 1, 2 and 3</li> </ul>			
Avian Theme	<ul style="list-style-type: none"> <li>• Witte Wall 1, 2 and 3</li> <li>• Grootfontein 1, 2 and 3</li> <li>• Hoekdoornen 1, 2 and 3</li> </ul>			
Agriculture Theme		<ul style="list-style-type: none"> <li>• Hoekdoornen 1, 2 and 3</li> </ul>	<ul style="list-style-type: none"> <li>• Witte Wall 1, 2 and 3</li> <li>• Grootfontein 1, 2 and 3</li> </ul>	
Palaeontology Theme		<ul style="list-style-type: none"> <li>• Witte Wall 1, 2 and 3</li> </ul>	<ul style="list-style-type: none"> <li>• Grootfontein 1, 2 and 3</li> <li>• Hoekdoornen 1, 2 and 3</li> </ul>	
Animal Species Theme			<ul style="list-style-type: none"> <li>• Witte Wall 1, 2 and 3</li> <li>• Grootfontein 1, 2 and 3</li> <li>• Hoekdoornen 1, 2 and 3</li> </ul>	
Archaeological and Cultural Heritage Theme				
Plant Species Theme				
Bats Theme				
Civil Aviation (Solar PV) Theme				<ul style="list-style-type: none"> <li>• Witte Wall 1, 2 and 3</li> <li>• Grootfontein 1, 2 and 3</li> <li>• Hoekdoornen 1, 2 and 3</li> </ul>
Defence Theme				
RFI Theme				

14



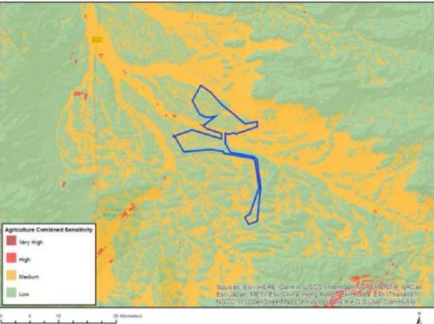
## APPENDICES

**DRAFT BASIC ASSESSMENT REPORT:** Basic Assessment for the Proposed Development of Electrical Grid Infrastructure to support the proposed nine 175 MW Solar Photovoltaic Facilities and associated Infrastructure (i.e. Witte Wall PV 1, Witte Wall PV 2, Grootfontein PV 1, Grootfontein PV 2, Grootfontein PV 3, Hoek Doornen PV 1, Hoek Doornen PV 2, Hoek Doornen PV 3, and Hoek Doornen PV 4), near Touws River, Western Cape

04/11/2020

### National DEFF Screening Tool – Specialist Assessments

- Study area is majority Low and Medium sensitivity → Compliance Statement
- Only extremely small portion of the study area contains High sensitivity, in proximity to the farmsteads, but footprint will avoid this.
- Agricultural Agro-Ecosystem Specialist Assessments are meant for sites that have significant crop production potential. This is not applicable to the study area.



15

### National DEFF Screening Tool – Specialist Assessments




## APPENDICES

**DRAFT BASIC ASSESSMENT REPORT:** Basic Assessment for the Proposed Development of Electrical Grid Infrastructure to support the proposed nine 175 MW Solar Photovoltaic Facilities and associated Infrastructure (i.e. Witte Wall PV 1, Witte Wall PV 2, Grootfontein PV 1, Grootfontein PV 2, Grootfontein PV 3, Hoek Doornen PV 1, Hoek Doornen PV 2, Hoek Doornen PV 3, and Hoek Doornen PV 4), near Touws River, Western Cape

04/11/2020

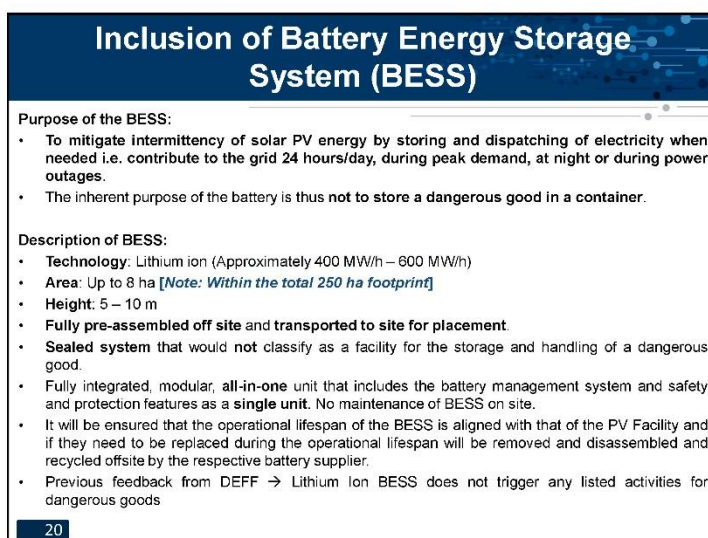
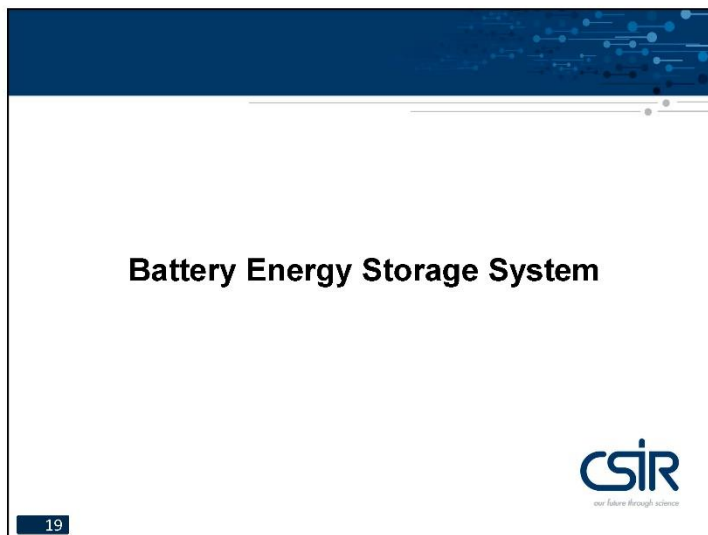
National DEFF Screening Tool – Specialist Assessments			
Specialist Study	Specialist Company	Specialist Name	Type of Assessment
Civil Aviation Assessment	CSIR	EAPs	Protocol: Compliance Statement (VH, H, M) or No Requirement (L) *
Defence Assessment	CSIR	EAPs	Protocol: Compliance Statement (VH, H, M) or No Requirement (L) *
Motivate Not to Undertake			
Specialist Study	Motivation		
RFI Assessment	The sites are located away from sensitive features e.g. SKA, KCAAA		
Geotechnical Assessment	<ul style="list-style-type: none"> <li>Contractors and suppliers will only be selected and appointed after preferred bidder status is obtained (should it be granted).</li> <li>To ensure that all aspects are covered in the assessment, suppliers of sub-structures, inverters and transformers and civil sub-contractors are required to provide input into the scope of work of the Geotechnical Assessment.</li> <li>Therefore, Geotechnical Assessments can only be undertaken during detailed design, if preferred bidder status is obtained.</li> </ul>		

Specialist Reporting
<ul style="list-style-type: none"> <li>• Three Specialist Reports will be compiled (as opposed to nine) for each specialist theme:               <ul style="list-style-type: none"> <li>– <b>Report 1: Witte Wall Farm:</b> This report will include the 3 PV Facilities (i.e. Witte Wall 1, 2 and 3), and 1 x EGI for each PV Plant (i.e. 3 Power Lines and 3 onsite substations) and Associated Infrastructure</li> <li>– <b>Report 2: Grootfontein Farm:</b> This report will include the 3 PV Facilities (i.e. Grootfontein 1, 2 and 3), and 1 x EGI for each PV Plant (i.e. 3 Power Lines and 3 onsite substations) and Associated Infrastructure</li> <li>– <b>Report 3: Hoek Doornen Farm:</b> This report will include the 3 PV Facilities (i.e. Hoek Doornen 1, 2 and 3), and 1 x EGI for each PV Plant (i.e. 3 Power Lines and 3 onsite substations) and Associated Infrastructure</li> </ul> </li> </ul>


## APPENDICES

**DRAFT BASIC ASSESSMENT REPORT:** Basic Assessment for the Proposed Development of Electrical Grid Infrastructure to support the proposed nine 175 MW Solar Photovoltaic Facilities and associated Infrastructure (i.e. Witte Wall PV 1, Witte Wall PV 2, Grootfontein PV 1, Grootfontein PV 2, Grootfontein PV 3, Hoek Doornen PV 1, Hoek Doornen PV 2, Hoek Doornen PV 3, and Hoek Doornen PV 4), near Touws River, Western Cape

04/11/2020



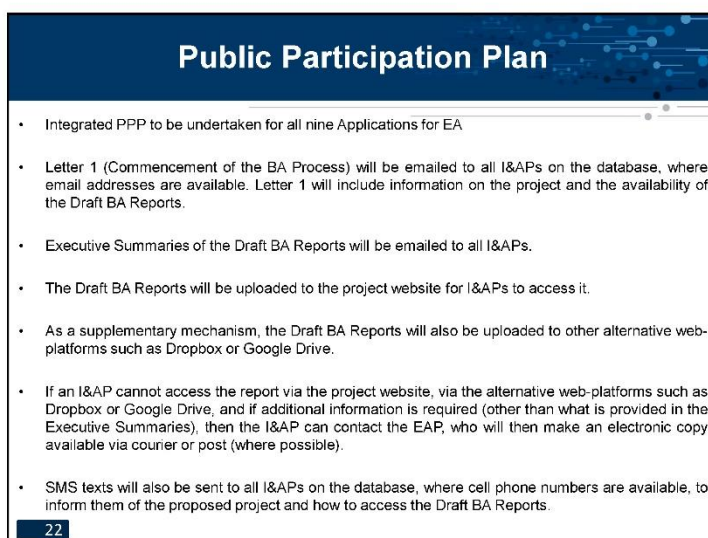
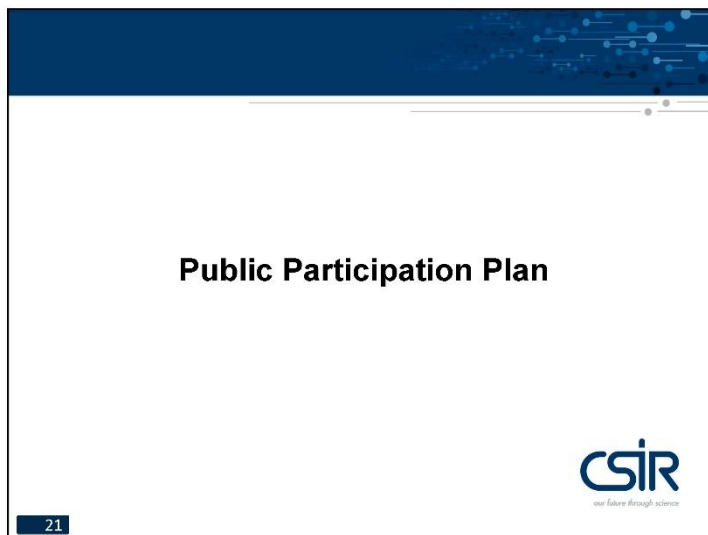
10

## APPENDICES

**DRAFT BASIC ASSESSMENT REPORT:** Basic Assessment for the Proposed Development of Electrical Grid Infrastructure to support the proposed nine 175 MW Solar Photovoltaic Facilities and associated Infrastructure (i.e. Witte Wall PV 1, Witte Wall PV 2, Grootfontein PV 1, Grootfontein PV 2, Grootfontein PV 3, Hoek Doornen PV 1, Hoek Doornen PV 2, Hoek Doornen PV 3, and Hoek Doornen PV 4), near Touws River, Western Cape

---

04/11/2020



11

## APPENDICES

**DRAFT BASIC ASSESSMENT REPORT:** Basic Assessment for the Proposed Development of Electrical Grid Infrastructure to support the proposed nine 175 MW Solar Photovoltaic Facilities and associated Infrastructure (i.e. Witte Wall PV 1, Witte Wall PV 2, Grootfontein PV 1, Grootfontein PV 2, Grootfontein PV 3, Hoek Doornen PV 1, Hoek Doornen PV 2, Hoek Doornen PV 3, and Hoek Doornen PV 4), near Touws River, Western Cape

---

04/11/2020

### Public Participation Plan

- Where possible, communication will be made with the ward councillor to request that they send notifications of the project and report availability and executive summaries via their local networks (such as WhatsApp groups, Neighbourhood Watch groups, other social media mechanisms etc.).
- In order to notify and inform the public of the proposed project, to invite I&APs to register on the project database, as well as to inform I&APs of the release of the Draft BA Reports for comment, the BA Processes will be advertised in English and Afrikaans in one local newspaper (e.g. Die Burger) at the commencement of the 30-day comment period for the Draft BA Reports.
- Site notice boards will be placed at the entrance of the key affected farm portions on which the proposed projects will be constructed, as well as at well-known retail facilities in Ceres and Touws River.
- Letter 2 (Submission of Final BA Reports to DEFF) will be emailed to all I&APs on the database, where email addresses are available.
- The Final BA Reports will be uploaded to the project website for I&APs to access it.
- As a supplementary mechanism, the Final BA Reports will also be uploaded to other alternative web-platforms such as Dropbox or Google Drive.

23

### Public Participation Plan

- Letter 3 (Release of Environmental Authorisation) will be emailed to all I&APs on the database, where email addresses are available. A copy of the Environmental Authorisation will be emailed with Letter 3.
- SMS texts will also be sent to all I&APs on the database, where cell phone numbers are available, to inform them of the Environmental Authorisations (should they be granted).
- Submit all reports, applications and required information to DEFF via the S-Filer Novell System

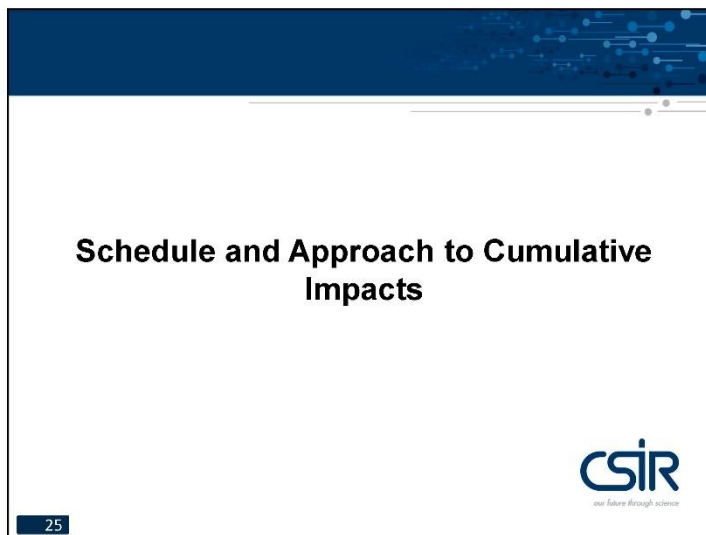
24

12

## APPENDICES

**DRAFT BASIC ASSESSMENT REPORT:** Basic Assessment for the Proposed Development of Electrical Grid Infrastructure to support the proposed nine 175 MW Solar Photovoltaic Facilities and associated Infrastructure (i.e. Witte Wall PV 1, Witte Wall PV 2, Grootfontein PV 1, Grootfontein PV 2, Grootfontein PV 3, Hoek Doornen PV 1, Hoek Doornen PV 2, Hoek Doornen PV 3, and Hoek Doornen PV 4), near Touws River, Western Cape

04/11/2020



Integrated Project Schedule	
Key Milestones	Proposed Timeframe
Project Initiation and Pre-Application Consultation with the DEFF	August 2020
Specialist Assessments	August 2020 – October 2020
Submit 9 * Application Forms to DEFF	Early November 2020
Release Draft BARs for 30 day commenting period	Early November 2020 – Early December 2020
Submit 9 * Final BARs to DEFF for Decision-Making	Late January 2021
DEFF Decision-Making on the 9 * Final BARs and issue of Decisions (i.e. grant or refuse EA): <b>57 days</b>	Late March 2021 or April 2021
EAP to Notify I&APs of Decisions (14 days)	April 2021

13

## APPENDICES

**DRAFT BASIC ASSESSMENT REPORT:** Basic Assessment for the Proposed Development of Electrical Grid Infrastructure to support the proposed nine 175 MW Solar Photovoltaic Facilities and associated Infrastructure (i.e. Witte Wall PV 1, Witte Wall PV 2, Grootfontein PV 1, Grootfontein PV 2, Grootfontein PV 3, Hoek Doornen PV 1, Hoek Doornen PV 2, Hoek Doornen PV 3, and Hoek Doornen PV 4), near Touws River, Western Cape

04/11/2020

### Cumulative Impacts

- Include all renewable energy projects within a 30 km radius that have received an EA at the time of starting this BA (i.e. by August 2020)
- Information obtained from the SA Renewable Energy EIA Application Database (REEA)

27

### Cumulative Impacts

DEA_REF	PROJ_TITLE	APPLICANT
14/12/16/3/3/1/1976	Proposed development of the 325MW Kodusberg Wind Energy Facility and associated infrastructure in Western and Northern Cape Provinces	Kodusberg Wind Farm (Pty) Ltd
12/12/20/1783/2/AM4	Proposed development of a WEF at the Perdekraal Site 2, Western Cape	
12/12/20/1783/2/AM5	Proposed development of a WEF at Perdekraal, Western Cape	
12/12/20/1783/2/AM3	Proposed development of a Renewable Energy Facility (REF) at Perdekraal, Western Cape - Split 1	South Africa Mainstream Renewable Power Perdekraal East Pty Ltd
12/12/20/1783/1	Proposed development of a REF at Perdekraal, Western Cape - Split 1	
12/12/20/1783/2	Proposed development of a REF at Perdekraal, Western Cape - Split 2	
12/12/20/1783/2/AM1	Proposed development of a REF at Perdekraal, Western Cape - Split 1	
12/12/20/1787	Proposed REF at Konstabel	South Africa Mainstream Renewable Power Developments (Pty) Ltd
12/12/20/1956	Proposed Touwsrivier Solar Energy Facility	CPV Power Plant No.1 Pty Ltd
12/12/20/1988	Proposed Construction Of The 750 MW Roggeveld Wind Farm; Karoo Hoogland Local Municipality (Northern Cape) and Laingsburg Local Municipality (Western Cape)	
12/12/20/1988/1/AM1	Proposed Construction Of The 750 MW Roggeveld Wind Farm; Karoo Hoogland Local Municipality (Northern Cape) and Laingsburg Local Municipality (Western Cape)	G7 Renewable Energies Pty Ltd
14/12/16/3/3/2/899	140 MW Rietkloof WEF, near Sutherland, Northern Cape and Western Cape	Rietkloof Wind Farm (Pty) Ltd
14/12/16/3/3/2/810	75 MW Montague Road Solar PV SEF on Vredefort No. 34 Near Touws River within the Breede Valley Local Municipality in the Western Cape Province	Montague Road Energy (Pty) Ltd
14/12/16/3/3/2/900	147MW Brandvalley wind energy facility North of the town of Matjiesfontein within Karoo Hoogland	Brandvalley Wind Farm (Pty) Ltd.

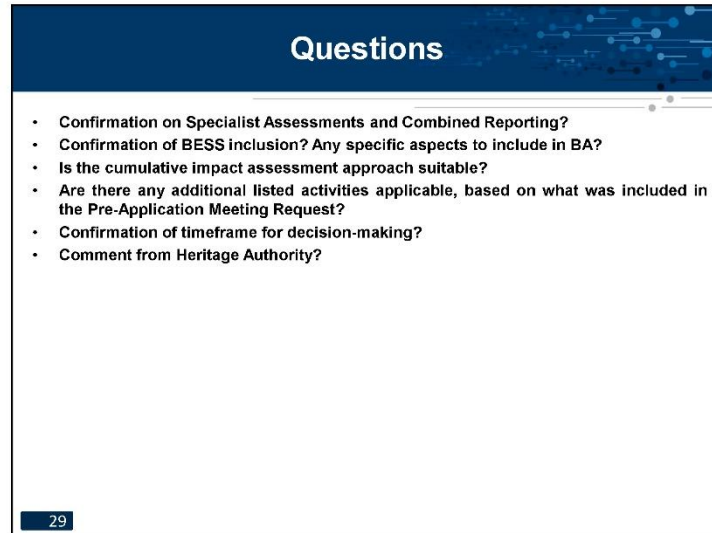
28

## APPENDICES

**DRAFT BASIC ASSESSMENT REPORT:** Basic Assessment for the Proposed Development of Electrical Grid Infrastructure to support the proposed nine 175 MW Solar Photovoltaic Facilities and associated Infrastructure (i.e. Witte Wall PV 1, Witte Wall PV 2, Grootfontein PV 1, Grootfontein PV 2, Grootfontein PV 3, Hoek Doornen PV 1, Hoek Doornen PV 2, Hoek Doornen PV 3, and Hoek Doornen PV 4), near Touws River, Western Cape

---

04/11/2020



### Questions

- Confirmation on Specialist Assessments and Combined Reporting?
- Confirmation of BESS inclusion? Any specific aspects to include in BA?
- Is the cumulative impact assessment approach suitable?
- Are there any additional listed activities applicable, based on what was included in the Pre-Application Meeting Request?
- Confirmation of timeframe for decision-making?
- Comment from Heritage Authority?

29

15



## APPENDICES

**DRAFT BASIC ASSESSMENT REPORT:** Basic Assessment for the Proposed Development of Electrical Grid Infrastructure to support the proposed nine 175 MW Solar Photovoltaic Facilities and associated Infrastructure (i.e. Witte Wall PV 1, Witte Wall PV 2, Grootfontein PV 1, Grootfontein PV 2, Grootfontein PV 3, Hoek Doornen PV 1, Hoek Doornen PV 2, Hoek Doornen PV 3, and Hoek Doornen PV 4), near Touws River, Western Cape

### APPENDIX I.3: PRE-APPLICATION MEETING NOTES

*Basic Assessments for the Proposed Development of nine 175 MW Solar Photovoltaic Facilities and associated Electrical Grid Infrastructure (i.e. Witte Wall 1; Witte Wall 2; Witte Wall 3; Grootfontein 1; Grootfontein 2; Grootfontein 3; Hoek Doornen 1; Hoek Doornen 2; and Hoek Doornen 3), near Touws River, Western Cape – PRE-APPLICATION MEETING*



**Basic Assessments for the Proposed Development of nine 175 MW Solar Photovoltaic Facilities and associated Electrical Grid Infrastructure (i.e. Witte Wall 1; Witte Wall 2; Witte Wall 3; Grootfontein 1; Grootfontein 2; Grootfontein 3; Hoek Doornen 1; Hoek Doornen 2; and Hoek Doornen 3), near Touws River, Western Cape**

**PRE-APPLICATION MEETING WITH THE DEPARTMENT OF ENVIRONMENT, FORESTRY AND FISHERIES (DEFF)**

#### MEETING NOTES

<b>Meeting:</b>	Pre-Application Meeting: Meeting Notes	
<b>Date of Meeting:</b>	25 August 2020	
<b>Meeting Platform:</b>	Microsoft Teams	
<b>Duration:</b>	10H00 – 11H15	
<b>Attendees:</b>	<ul style="list-style-type: none"> <li>▪ Fiona Grimmett (FG), DEFF</li> <li>▪ Bongeka Mtyana (BM), DEFF</li> <li>▪ Claude Bosman (CB), Veroniva</li> </ul>	<ul style="list-style-type: none"> <li>▪ Dhiveshni Moodley (DM), CSIR</li> <li>▪ Paul Lochner (PL), CSIR</li> <li>▪ Rohaida Abed (RA), CSIR</li> </ul>
<b>Apologies</b>	<ul style="list-style-type: none"> <li>▪ Sindiswa Dlomo (SD), (DEFF)</li> </ul>	

#### 1. Purpose of Meeting and Agenda

A pre-application meeting was held between the National Department of Environment, Forestry, and Fisheries (DEFF), Veroniva (PTY) Ltd, and the Council for Scientific and Industrial Research (CSIR) on 25 August 2020 to discuss the Basic Assessments (BAs) for the Proposed Development of nine 175 MW Solar Photovoltaic (PV) Facilities and associated Electrical Grid Infrastructure (EGI) (i.e. Witte Wall 1; Witte Wall 2; Witte Wall 3; Grootfontein 1; Grootfontein 2; Grootfontein 3; Hoek Doornen 1; Hoek Doornen 2; and Hoek Doornen 3), near Touws River, Western Cape.

The meeting was chaired by RA. The meeting took place according to the agenda below:

Item	Description	Time	Presenter
1	Welcome, Introduction and Outline of Meeting Proceedings	10H00 - 10H10	DEFF
2	Description of the proposed Witte Wall 1; Witte Wall 2; Witte Wall 3; Grootfontein 1; Grootfontein 2; Grootfontein 3; Hoek Doornen 1; Hoek Doornen 2; and Hoek Doornen 3 Solar PV and associated infrastructure projects	10H10 - 10H30	CSIR
3	Discussion on the specialist assessments and compliance statements to be undertaken as part of the nine BA Processes and the associated specialist reporting	10H30 – 10H45	All
4	Discussion on the approach towards including Lithium Ion Battery Energy Storage Systems (BESS) in the project descriptions	10H45 – 11H05	All
5	Discussion and confirmation of the proposed Public Participation Plan (PP Plan)	11H05 – 11H20	All
6	Discussion of the proposed schedule and overall process for the BA Processes, including Cumulative Impact Assessment Approach	11H20 – 11H40	All
7	Questions, Way Forward and Closure	11H40 – 12H00	All

## APPENDICES

**DRAFT BASIC ASSESSMENT REPORT:** Basic Assessment for the Proposed Development of Electrical Grid Infrastructure to support the proposed nine 175 MW Solar Photovoltaic Facilities and associated Infrastructure (i.e. Witte Wall PV 1, Witte Wall PV 2, Grootfontein PV 1, Grootfontein PV 2, Grootfontein PV 3, Hoek Doornen PV 1, Hoek Doornen PV 2, Hoek Doornen PV 3, and Hoek Doornen PV 4), near Touws River, Western Cape

---

*Basic Assessments for the Proposed Development of nine 175 MW Solar Photovoltaic Facilities and associated Electrical Grid Infrastructure (i.e. Witte Wall 1; Witte Wall 2; Witte Wall 3; Grootfontein 1; Grootfontein 2; Grootfontein 3; Hoek Doornen 1; Hoek Doornen 2; and Hoek Doornen 3), near Touws River, Western Cape – PRE-APPLICATION MEETING*

---

### 2. Presentation: Project Overview; Specialist Reporting; BESS, BA Process and PP Plan

RA initiated introductions and sought guidance from the DEFF on the proceeding of the meeting. FG confirmed that the presentation could be delivered and questions will be asked, as necessary during the presentation, as opposed to discussing them at the end.

RA provided a presentation on the background of the proposed projects. The National Web-based Screening Tool findings were also discussed along with the specialist assessments and reporting proposed. Thereafter, the inclusion of the Lithium Ion BESS, PP Plan, project schedule and approach to cumulative impacts were presented. A copy of this presentation is separately attached to these meeting notes.

The following comments were raised and corresponding responses provided.

Queries or Comments Raised	Responses
<ul style="list-style-type: none"> <li>▪ <b>FG:</b> If Environmental Authorisation (EA) is given for nine power lines, will all nine be built? Is it necessary to have all nine power lines?</li> <li>▪ <b>FG:</b> How will the power line corridor be managed if all nine power lines receive EA? How will it be decided which Applicant will build the power line?</li> <li>▪ <b>FG:</b> This is noted and will be discussed with other DEFF officials after the pre-application meeting; and feedback will be provided to the CSIR accordingly.</li> </ul>	<ul style="list-style-type: none"> <li>▪ <b>RA:</b> The power line corridor that will be assessed by the specialists is 300 m wide, which is wide enough for nine power lines to be assessed and constructed within, should this be required. The servitudes will be managed in line with Eskom's requirements.</li> <li>▪ <b>CB:</b> In line with the requirements of the Independent Power Producer Programme, the power lines will be a self-build and may be handed over to Eskom following construction, who will then own the power line infrastructure. It is proposed to assess nine power lines (i.e. one power line per PV project). However, nine power lines being built is the worst-case scenario that needs to be assessed. At maximum, probably only three power lines will be built (one power line to service three PV facilities). For bidding purposes, the Independent Power Producer Programme requires all PV facilities to show sustainability and that they are stand-alone and are able to connect to the grid (hence nine power lines within the corridor need to be assessed). The Applicant that builds the power line will be decided by a bidding process. The first Applicant will build an on-site substation and power line to connect to the Eskom Kappa Substation. Thereafter, the rest of the Applicants will use the substations and power lines already built (i.e. subsequent projects will connect to the infrastructure constructed first).</li> <li>▪ <b>Post-Meeting Note:</b> DEFF's concern is around authorising nine power lines in total; whereby each Project Applicant will have rights to construct a separate power line. This will have an increased potential impact, and the Competent Authority will not be in a position to limit the number of power lines constructed (and associated impacts), once</li> </ul>

## APPENDICES

**DRAFT BASIC ASSESSMENT REPORT:** Basic Assessment for the Proposed Development of Electrical Grid Infrastructure to support the proposed nine 175 MW Solar Photovoltaic Facilities and associated Infrastructure (i.e. Witte Wall PV 1, Witte Wall PV 2, Grootfontein PV 1, Grootfontein PV 2, Grootfontein PV 3, Hoek Doornen PV 1, Hoek Doornen PV 2, Hoek Doornen PV 3, and Hoek Doornen PV 4), near Touws River, Western Cape

---

*Basic Assessments for the Proposed Development of nine 175 MW Solar Photovoltaic Facilities and associated Electrical Grid Infrastructure (i.e. Witte Wall 1; Witte Wall 2; Witte Wall 3; Grootfontein 1; Grootfontein 2; Grootfontein 3; Hoek Doornen 1; Hoek Doornen 2; and Hoek Doornen 3), near Touws River, Western Cape – PRE-APPLICATION MEETING*

---

Queries or Comments Raised	Responses
	<p>granted. The DEFF had initially recommended undertaking a separate application for the power line component, however based on additional feedback provided by the CSIR to the DEFF via email on 26 August 2020, it was re-iterated that the bidding process requires each project to be stand-alone and EA is required for the entire project as a whole and that approval is obtained by the developer for the connection points to the grid. It was also noted that it not possible to know which project will receive preferred bidder status in terms of the Independent Power Producer Programme and which rounds each project will be bid for (some might be bid in Round 5 and others in remaining rounds). It was also re-iterated that similar BAs were undertaken for other Renewable Energy projects in the Renewable Energy Development Zones (REDZs) using a similar approach i.e. one combined application was submitted for a PV facility, associated infrastructure and EGI. On 31 August 2020, the DEFF provided feedback to the CSIR via email noting that if nine separate PV facility applications are submitted, each with a power line, then the following must be undertaken:</p> <ul style="list-style-type: none"> <li>○ The power line must be completely within the REDZ in line with GN 114;</li> <li>○ The cumulative impacts of the power lines for all proposed facilities must be assessed in the BA Reports and specialist studies. The full potential cumulative impact therefore needs to be assessed and understood;</li> <li>○ The impacts, mitigation measures and proposed conditions for the power line need to be separated from the PV facility both in the BA Reports and specialist studies; and</li> <li>○ Two separate EMPs (considering the DEFF generic EMPs for EGI) will need to be submitted for each application, i.e. one for the PV facility and one for the power line component.</li> </ul> <p>The above will be undertaken by the CSIR and fulfilled in the Draft and Final BA Reports. A copy of the email correspondence between the DEFF and CSIR (dated 31 August 2020 (post pre-application meeting)) is included in Appendix A of these meeting notes.</p>
<ul style="list-style-type: none"> <li>▪ <b>RA:</b> Please confirm if the list of specialist assessments and compliance statements that will be undertaken as part of the BA Processes are</li> </ul>	<ul style="list-style-type: none"> <li>▪ <b>FG:</b> The list of specialist assessments and compliance statements to be undertaken is suitable. The motivation for not undertaking the RFI and</li> </ul>

## APPENDICES

**DRAFT BASIC ASSESSMENT REPORT:** Basic Assessment for the Proposed Development of Electrical Grid Infrastructure to support the proposed nine 175 MW Solar Photovoltaic Facilities and associated Infrastructure (i.e. Witte Wall PV 1, Witte Wall PV 2, Grootfontein PV 1, Grootfontein PV 2, Grootfontein PV 3, Hoek Doornen PV 1, Hoek Doornen PV 2, Hoek Doornen PV 3, and Hoek Doornen PV 4), near Touws River, Western Cape

---

*Basic Assessments for the Proposed Development of nine 175 MW Solar Photovoltaic Facilities and associated Electrical Grid Infrastructure (i.e. Witte Wall 1; Witte Wall 2; Witte Wall 3; Grootfontein 1; Grootfontein 2; Grootfontein 3; Hoek Doornen 1; Hoek Doornen 2; and Hoek Doornen 3), near Touws River, Western Cape – PRE-APPLICATION MEETING*

---

Queries or Comments Raised	Responses
<p>suitable, especially the motivation for not undertaking Geotechnical Assessments and RFI Assessments as part of the BA Processes. In the case of the latter, the motivation presented during the meeting will be included in the BA Reports to explain why these studies are not being undertaken. We would like to confirm that this is not raised as a concern by the DEFF during the 30-day comment period on the Draft BA Reports.</p>	<p>Geotechnical Assessments as part of the BA Processes is accepted. A copy of the motivation discussed during the pre-application meeting must be included in the Draft BA Reports. The findings of the Screening Tool Report must also be captured in the Draft BA Reports. It is important that this be included in the notes of the pre-application meeting, so that if another case officer is assigned the project, they can refer to the notes and have an idea of what was discussed and agreed to at the pre-application meeting.</p> <ul style="list-style-type: none"> <li>▪ <b>RA:</b> This is noted with thanks, and will be incorporated into the Draft BA Reports.</li> </ul>
<ul style="list-style-type: none"> <li>▪ <b>RA:</b> Please confirm if the combined approach to the specialist reporting is suitable, whereby three specialist reports will be compiled (instead of nine), where each report will cover three PV facilities, three power lines, three substations, and associated infrastructure. For example, in total three Heritage Impact Assessments will be provided, where the first Heritage Impact Assessment Report will include the Witte Wall 1, Witte Wall 2 and Witte Wall 3 projects; the second Heritage Impact Assessment Report will include the Grootfontein 1, Grootfontein 2, and Grootfontein 3 projects; and the third Heritage Impact Assessment Report will include the Hoek Doornen 1, Hoek Doornen 2, and Hoek Doornen 3 projects). Each report will have clearly marked sub-sections pertaining to each project, and the BA Reports will only include information relevant to that specific project (e.g. Witte Wall 1 etc.).</li> </ul>	<ul style="list-style-type: none"> <li>▪ <b>FG:</b> The combined specialist reporting presented is suitable and is accepted. It must be clearly explained in each specialist report what impacts or environmental features are specific to each project.</li> <li>▪ <b>RA:</b> This is noted with thanks, and will be incorporated into the Draft BA Reports and specialist assessments.</li> <li>▪ <b>FG:</b> Can the EAP make a note in the cover letter, when submitting the BA Reports to the DEFF, to explain where the BA Reports and specialist assessments differ per project, whether it be from an environmental sensitivity or impact perspective. This will assist the case officer in reviewing the reports efficiently.</li> <li>▪ <b>RA:</b> Noted, the requested information will be included in the cover letters.</li> </ul>
<ul style="list-style-type: none"> <li>▪ <b>BM:</b> In terms of distribution of work between the case officers, it may not be feasible to combine three specialist reports into one report and only provide one copy because there may be more than one case officer assigned to the project, hence the reports cannot be shared.</li> <li>▪ <b>FG:</b> Can the EAP include copies of the specialist reports in each of the applications (e.g. A copy of the VIA for the Witte Wall project must be included in the Draft BA Reports for Witte Wall 1, Witte Wall 2 and Witte Wall 3).</li> </ul>	<ul style="list-style-type: none"> <li>▪ <b>RA:</b> Noted, relevant copies of the specialist reports will be included in each BA Report to ensure that each BA Report has all of the specialist studies for that specific cluster of projects.</li> </ul>
<ul style="list-style-type: none"> <li>▪ <b>RA:</b> Based on various discussions with the DEFF on other applications, it has been confirmed that a Lithium Ion BESS does not trigger any listed activities in terms of the EIA Regulations, with regards to the storage and handling of dangerous goods. Please confirm if this is correct and that</li> </ul>	<ul style="list-style-type: none"> <li>▪ <b>FG:</b> This has been discussed internally within the DEFF. It was confirmed that listed activities in the EIA Regulations are only triggered if there are dangerous goods on site for the filling of the batteries. The Lithium Ion batteries proposed for the PV facilities are pre-assembled and based on the</li> </ul>

## APPENDICES

### DRAFT BASIC ASSESSMENT REPORT: Basic Assessment for the Proposed Development of Electrical Grid Infrastructure to support the proposed nine 175 MW Solar Photovoltaic Facilities and associated Infrastructure (i.e. Witte Wall PV 1, Witte Wall PV 2, Grootfontein PV 1, Grootfontein PV 2, Grootfontein PV 3, Hoek Doornen PV 1, Hoek Doornen PV 2, Hoek Doornen PV 3, and Hoek Doornen PV 4), near Touws River, Western Cape

*Basic Assessments for the Proposed Development of nine 175 MW Solar Photovoltaic Facilities and associated Electrical Grid Infrastructure (i.e. Witte Wall 1; Witte Wall 2; Witte Wall 3; Grootfontein 1; Grootfontein 2; Grootfontein 3; Hoek Doornen 1; Hoek Doornen 2; and Hoek Doornen 3), near Touws River, Western Cape – PRE-APPLICATION MEETING*

Queries or Comments Raised	Responses
<p>there are no concerns with adding the BESS to the project description?</p> <ul style="list-style-type: none"> <li>▪ <b>RA:</b> Is a high level Risk Assessment needed for the Lithium Ion BESS?</li> </ul>	<p>description provided, the Lithium Ion batteries do not trigger any listed activities on its own.</p> <ul style="list-style-type: none"> <li>▪ <b>FG and BM:</b> We have not asked for Risk Assessments to be conducted for similar battery storage projects. Hence, a Risk Assessment will not be required for the proposed project.</li> <li>▪ <b>Outcome:</b> It was confirmed that the Lithium Ion BESS does not trigger any listed activities and there are no specific requirements for the BA Processes.</li> </ul>
<ul style="list-style-type: none"> <li>▪ <b>FG:</b> The PP Plan presented is suitable. A suggestion may be to consider engaging with I&amp;APs via MS Teams or similar mechanisms if it is required, for example in areas where there is high illiteracy.</li> </ul>	<ul style="list-style-type: none"> <li>▪ <b>RA:</b> Noted, the suggestion will be added into the PP Plan as an option to consider, if needed.</li> </ul>
<ul style="list-style-type: none"> <li>▪ <b>RA:</b> Please confirm the way forward for approval of the PP Plan?</li> </ul>	<ul style="list-style-type: none"> <li>▪ <b>FG:</b> The PP Plan must be submitted to FG for approval via email following the pre-application meeting. FG will be responsible for reviewing and approving the PP Plan. Feedback on the PP Plan will be provided as soon as possible.</li> </ul>
<ul style="list-style-type: none"> <li>▪ <b>RA:</b> We are basing our approach to the assessment of cumulative impacts on other Renewable Energy Facilities that occur within a 30 km radius of the proposed project, which have received EA at the commencement of these BA Processes. We will not include other Renewable Energy projects that have started their EA processes or where such applications have not yet been decided on as at August 2020. We have obtained a list of approved Renewable Energy projects within the 30 km radius from the DEFF E-GIS website. Please confirm if this approach is suitable?</li> </ul>	<ul style="list-style-type: none"> <li>▪ <b>FG:</b> Yes, this approach to the assessment of cumulative impacts is suitable and the project schedule is fine.</li> </ul>
<ul style="list-style-type: none"> <li>▪ <b>RA:</b> The applicable listed activities were included in the pre-application meeting request form. Please confirm if the DEFF has picked up any additional listed activities that were not included? [RA displayed the listed activities in shared view].</li> </ul>	<ul style="list-style-type: none"> <li>▪ <b>FG:</b> All the listed activities seem to be covered.</li> </ul>
<ul style="list-style-type: none"> <li>▪ <b>RA:</b> The proposed projects (i.e. Witte Wall 1; Witte Wall 2; Witte Wall 3; Grootfontein 1; Grootfontein 2; Grootfontein 3; Hoek Doornen 1; Hoek Doornen 2; and Hoek Doornen 3) all fall within the REDZ. Please confirm if the decision-making timeframe for the proposed projects will be 57 days?</li> </ul>	<ul style="list-style-type: none"> <li>▪ <b>BM:</b> DEFF had a project previously, similar to this theme, where we only considered a 57-day decision-making timeframe for the PV component, and followed normal timeframes for the power line as part of a separate application, despite the power line falling within one of the gazetted EGI corridors.</li> <li>▪ <b>FG:</b> The power lines are included within the application for each of the PV facilities, as supporting infrastructure, so it is part of the application requiring authorisation.</li> <li>▪ <b>RA:</b> Yes, the power line is considered as infrastructure necessary for the realization of the PV Facility, and that is covered in GN 114.</li> </ul>

## APPENDICES

### DRAFT BASIC ASSESSMENT REPORT: Basic Assessment for the Proposed Development of Electrical Grid Infrastructure to support the proposed nine 175 MW Solar Photovoltaic Facilities and associated Infrastructure (i.e. Witte Wall PV 1, Witte Wall PV 2, Grootfontein PV 1, Grootfontein PV 2, Grootfontein PV 3, Hoek Doornen PV 1, Hoek Doornen PV 2, Hoek Doornen PV 3, and Hoek Doornen PV 4), near Touws River, Western Cape

---

*Basic Assessments for the Proposed Development of nine 175 MW Solar Photovoltaic Facilities and associated Electrical Grid Infrastructure (i.e. Witte Wall 1; Witte Wall 2; Witte Wall 3; Grootfontein 1; Grootfontein 2; Grootfontein 3; Hoek Doornen 1; Hoek Doornen 2; and Hoek Doornen 3), near Touws River, Western Cape – PRE-APPLICATION MEETING*

---

Queries or Comments Raised	Responses
	<ul style="list-style-type: none"> <li>▪ <b>FG and BM:</b> It is agreed that there will be a reduced 57-day decision-making timeframe due to the projects falling within a REDZ.</li> <li>▪ <b>Post-Meeting Note:</b> Refer to Appendix A of these meeting notes for a copy of the email correspondence between the DEFF and CSIR (dated 31 August 2020 (post pre-application meeting)), for further background.</li> </ul>
<ul style="list-style-type: none"> <li>▪ <b>RA:</b> The proposed project falls within the Western Cape; therefore, Heritage Western Cape serves as the relevant Heritage Authority. Is it mandatory for the DEFF to have comment from the Heritage Western Cape in order to make a decision?</li> </ul>	<ul style="list-style-type: none"> <li>▪ <b>FG:</b> No it is not mandatory for the DEFF to wait for comment from the Heritage Western Cape. However, it is mandatory that the EAP has proof that comments have been requested from the authorities. There is no hold up of the project if the relevant authorities do not comment within the 30-day period, as long as there is proof that the authorities have been consulted with and comment has been requested.</li> </ul>
<ul style="list-style-type: none"> <li>▪ <b>RA:</b> Will all nine applications be assigned to BM?</li> </ul>	<ul style="list-style-type: none"> <li>▪ <b>FG:</b> Usually the applications discussed at pre-application meetings will go to the case officer that attended the meeting, however it all depends on when the Applications for EA and Draft BA Reports are submitted and the work allocations at the time.</li> </ul>
<ul style="list-style-type: none"> <li>▪ <b>FG:</b> The EAP must include the presentation delivered at the pre-application meeting, as well as the notes of the pre-application meeting, as appendices to the Draft BA Reports that are being submitted to the DEFF, so that any case officer assigned to the projects will be aware of the items agreed to and to make a note of.</li> </ul>	<ul style="list-style-type: none"> <li>▪ <b>RA:</b> Noted, the presentation and meeting notes will be included as appendices to the Draft BA Reports, when being submitted to the DEFF.</li> </ul>

### 3. Way Forward and Closure

RA: In summary, the CSIR will compile and submit the notes of the pre-application meeting to the DEFF, as well as the PP Plan. The DEFF will then reply in two days or as soon as possible to confirm if the plan is suitable or not. If the plan is suitable, the application process can commence.

The meeting was closed the meeting at 11H15.

### 4. Post-Meeting Discussions

The post-meeting discussions via email have confirmed that nine separate Applications for EA that include a PV Facility, power line and associated infrastructure (as discussed at the pre-application meeting on 25 August 2020) are suitable if certain requirements are met, as noted above and in Appendix A (e.g. impacts and mitigation measures for the power line and PV facility must be clearly separated in the specialist reports and BA Reports). These requirements provided by the DEFF will be met when compiling the reports.

It must further be noted that the CSIR is currently discussing with the DEFF the option of combining the applications in terms of Regulation 11 (4) of the 2014 NEMA EIA Regulations (as amended). A letter detailing the request for application combination, and the proposed plan for submission, will be submitted to the DEFF for written approval. This will be handled separately with the DEFF, as initial discussions via email (with Fiona Grimett) have already taken place, as of 1 September 2020.

---



## APPENDICES

**DRAFT BASIC ASSESSMENT REPORT:** Basic Assessment for the Proposed Development of Electrical Grid Infrastructure to support the proposed nine 175 MW Solar Photovoltaic Facilities and associated Infrastructure (i.e. Witte Wall PV 1, Witte Wall PV 2, Grootfontein PV 1, Grootfontein PV 2, Grootfontein PV 3, Hoek Doornen PV 1, Hoek Doornen PV 2, Hoek Doornen PV 3, and Hoek Doornen PV 4), near Touws River, Western Cape

***Basic Assessments for the Proposed Development of nine 175 MW Solar Photovoltaic Facilities and associated Electrical Grid Infrastructure (i.e. Witte Wall 1; Witte Wall 2; Witte Wall 3; Grootfontein 1; Grootfontein 2; Grootfontein 3; Hoek Doornen 1; Hoek Doornen 2; and Hoek Doornen 3), near Touws River, Western Cape – PRE-APPLICATION MEETING***

### Appendix A – Post-Meeting E mail Correspondence with the DEFF

**From:** Fiona Grimett <FGrimett@environment.gov.za>  
**To:** Rohaida Abed <RAbed@csir.co.za>  
**CC:** Paul Lochner <P.Lochner@csir.co.za>, Bongeka Mtyana <BMtyana@environment.gov.za>, Sindiswa Dikomo <SDikomo@environment.gov.za>  
**Date:** 31 Aug 2020 15:12  
**Subject:** Re: 2020-08-0013 - Pre-Application Meeting - Ceres PV Developments

Dear Rohaida,

We note that the recommendation of the Department to apply for the power line separately is rejected. It is not clear from the DMRE IPP extract whether it will not be permitted to submit a PV facility EA, together with the same separate power line EA, as a complete standalone project for each facility, and I cannot comment on such. In terms of EIA legislation, it is permitted and preferred from an implementation side to apply for separate applications, where two separate entities are intended to be the holders at the end, since separating EAs is more complex than a single amendment to transfer an EA to a new holder. Nevertheless, should nine separate PV facility applications be submitted, each with a power line, then the following:

- Ensure that the power line is also completely within the REDZ per GN114 (unless I am mistaken, GN113 for the EGI corridor is not applicable, since the power line capacity does not trigger activity 9 of LN2 and the specific alignment would also need to be pre-negotiated);
- The cumulative impacts of the power lines for all proposed facilities must be assessed in the BAR and specialist studies, as the authorisations, if granted, will technically permit 9 power lines to be constructed in the corridor, and the competent authority will not be in a position to limit the number of power lines constructed (and associated impacts), once granted. The full potential cumulative impact therefore needs to be assessed and understood;
- The impacts, mitigation measures and proposed conditions for the power line need to be separated from the PV facility both in the BAR and specialist studies;
- Two separate EMPs (take note of the Department's generic EMPs where relevant) will need to be submitted for each application, for the PV facility and power line component.

The Department will then address any concerns arising in the comments on the draft BAR.

With regards to regulation 11(1), if you propose submitting one combined application for all nine facilities as a more efficient process if components and impacts are similar, and receiving nine EA's as the outcome, you will need to submit the proposal/ application in writing, for the written approval of the competent authority.

You are reminded to submit the pre-application meeting minutes and public participation plan for approval.

Regards,

Fiona Grimett  
Assistant Director: National Infrastructure Projects  
Department of Environment, Forestry and Fisheries  
Chief Directorate: Integrated Environmental Authorisations

---

**From:** Rohaida Abed <RAbed@csir.co.za>  
**Sent:** 28 August 2020 19:23  
**To:** Fiona Grimett  
**Cc:** Paul Lochner; Bongeka Mtyana  
**Subject:** Re: 2020-08-0013 - Pre-Application Meeting - Ceres PV Developments

Dear Fiona

I hope that you are well. Just checking if the email below came through? I have re-attached the IPP extract in PDF this time around, just in case the PNG sent previously comes up as an error.

Look forward to your feedback. Thanks again.

Kind Regards,  
Rohaida  
>>> Rohaida Abed 26 Aug 2020 19:30 >>>  
Dear Fiona

Thanks for your feedback, it is appreciated.

As discussed during the pre application meeting on 25 August 2020, we will submit a total of 9 Applications for Environmental Authorisation (EA). Each Application for EA will include the following:

- 1 \* Solar PV Facility
- 1 \* Power Line
- 1 \* On-Site Substation
- Associated Infrastructure (Access Roads, Internal Roads, Building Infrastructure, Lithium Ion Battery Energy Storage System etc.)

## APPENDICES

### DRAFT BASIC ASSESSMENT REPORT: Basic Assessment for the Proposed Development of Electrical Grid Infrastructure to support the proposed nine 175 MW Solar Photovoltaic Facilities and associated Infrastructure (i.e. Witte Wall PV 1, Witte Wall PV 2, Grootfontein PV 1, Grootfontein PV 2, Grootfontein PV 3, Hoek Doornen PV 1, Hoek Doornen PV 2, Hoek Doornen PV 3, and Hoek Doornen PV 4), near Touws River, Western Cape

#### ***Basic Assessments for the Proposed Development of nine 175 MW Solar Photovoltaic Facilities and associated Electrical Grid Infrastructure (i.e. Witte Wall 1; Witte Wall 2; Witte Wall 3; Grootfontein 1; Grootfontein 2; Grootfontein 3; Hoek Doornen 1; Hoek Doornen 2; and Hoek Doornen 3), near Touws River, Western Cape – PRE-APPLICATION MEETING***

Therefore, in total there will be an assessment of 9 power lines for all 9 projects. Each application will have one power line (not 9 power lines). The power lines will be constructed within a 300 m wide corridor that is being assessed by the specialists.

We have undertaken recent projects in the REDZ based on the same above concept, i.e. three different project Applications for EA were submitted where each application included one PV facility, one power line and one substation, and at the end of the process three EAs were issued for the projects, which included all these infrastructure, and a 57 day decision-making process was followed. This was based on the understanding that the power line itself is required for the realisation of the PV facilities.

Please see attached two extracts from the latest REIPPPP Request for Proposal (RFP) issued by the Department of Energy (dated 2015 from the last REIPPPP Bid Window). The relevant sections are highlighted.

The bidding process requires each project to be standalone and Environmental Authorisation is required for the entire project as a whole and that approval is obtained by the developer for the connection points to the grid.

As indicated, the REIPPPP bidding requires that the holder of the EA for the grid connection will need to be the developer, who will undertake a self build option to the point of connection. If successful, that EA can later be transferred to Eskom. Therefore, having a separate BA for only the grid connection would still require an amendment of the EA and does not necessarily reduce the need for amendments. Furthermore, in our approach, the EMPr will make it very clear what management conditions apply to the PV facility and what apply to the grid connection (complying with the Gazetted EGI EMPrs), to enable the EA to allocate conditions specifically to the grid component of the project, where necessary.

We are considering a 300 m wide corridor as part of these BA Processes, and we are assessing the worst case of one power line for each project (9 in total) so that each project can be seen as independent or standalone.

In addition, each EA Application will have a different project developer (under the holding company of Veroniva).

It is not possible to know which of the nine projects will receive preferred bidder status in terms of the REIPPPP, therefore it is important to make sure that which ever project receives preferred bidder status, it is able to connect to the grid and is stand alone.

It is also possible that not all nine projects may be bid in the same rounds of the REIPPPP, as some of the projects may be bid later. This also adds to the motivation to make sure that the projects are standalone.

If the first project receives preferred bidder status, then that project will have an on-site substation and a power line constructed. Then the next project will be constructed and will connect to the onsite substation constructed for the first project. This will all be mentioned in the BA Reports.

As discussed yesterday, we are therefore motivating to include the electrical grid infrastructure in the projects and submit nine Applications for EA in total, as done for previous projects in the REDZ. By assessing all project components for each project in one report (i.e. 9 BA Reports in total), the project impacts will be covered holistically and incremental decision-making will be avoided.

In the BA Reports, we will make a note of which recommended conditions for the EA and management actions apply to the PV Facility and associated infrastructure, Power Line and Substation; so that is clearly identified.

Please kindly confirm if the above is suitable.

Please can you also confirm the applicability of Regulation 11 (1) of the EIA Regulations in this case:

*- If a proponent or proponents intend to undertake one or more than one activity of the same type at different locations within the area of jurisdiction of a competent authority, the competent authority may, on written request, grant permission for the submission of a single application.*

We understand that separate EAs could be issued where applications are combined? Please advise.

Thanks and kind regards,

Rohaida

>>> Fiona Grimmett <FGrimett@environment.gov.za> 26 Aug 2020 01:44 >>>

Dear Rohaida,

I have discussed the power line component with my colleagues, given my concerns raised in the meeting regarding authorising 9 power lines for each PV facility. If you recall, the concern was that each applicant will have rights to construct a separate power line and increase potential impact, when only one power line will be required, and that amendments to the EAs would have to follow, with the difficulty of:

- separating the PV and powerline components and conditions, to obtain 2 separate EAs, in order to transfer the power line component to Eskom;
- possibly removing or amending the power line component in the other EAs;
- and the additional timeframes for amendment and appeals associated with that.

My colleagues have confirmed that the power line can be applied for in a separate application, as I suggested in the meeting, and that we would require this route to be followed. In addition, please also see below, the response from our IQ (Interpretation Queries) section for a similar project, which indicates that the 57 days would not apply to the power line, as Songeka mentioned. The pink is the translation. The blue is the response. You are welcome to follow up with IQ@environment.gov.za for further clarity, or to enquire whether the power line would be considered as *listed activities necessary for the realisation of the PV facility* if it was applied for in the same application for a single PV facility (or if you would still be required to apply for it separately), but in this case with 9 neighbouring facilities, a separate power line application should be submitted for the reasons stated above, and it would then not benefit from the 57 days. It will still be a BAR process though, if it falls below the thresholds. Therefore, if you have the document

## APPENDICES

**DRAFT BASIC ASSESSMENT REPORT:** Basic Assessment for the Proposed Development of Electrical Grid Infrastructure to support the proposed nine 175 MW Solar Photovoltaic Facilities and associated Infrastructure (i.e. Witte Wall PV 1, Witte Wall PV 2, Grootfontein PV 1, Grootfontein PV 2, Grootfontein PV 3, Hoek Doornen PV 1, Hoek Doornen PV 2, Hoek Doornen PV 3, and Hoek Doornen PV 4), near Touws River, Western Cape

---

***Basic Assessments for the Proposed Development of nine 175 MW Solar Photovoltaic Facilities and associated Electrical Grid Infrastructure (i.e. Witte Wall 1; Witte Wall 2; Witte Wall 3; Grootfontein 1; Grootfontein 2; Grootfontein 3; Hoek Doornen 1; Hoek Doornen 2; and Hoek Doornen 3), near Touws River, Western Cape – PRE-APPLICATION MEETING***

---

mentioned in the meeting, which indicates that you must have standalone facilities, and are not allowed to apply for the PV facilities and power line separately as required by the Department, please forward this to me per my previous email. Thank you.

Regards,  
Fiona

---

**From:** Theunis Meyer <[Theunis.Meyer@nwu.ac.za](mailto:Theunis.Meyer@nwu.ac.za)>  
**Sent:** Tuesday, 11 August 2020 09:50  
**To:** Amanda Van Reenen <[avanreenen@environment.gov.za](mailto:avanreenen@environment.gov.za)>  
**Cc:** [charlotte@globalgreensa.co.za](mailto:charlotte@globalgreensa.co.za); Francois Retief <[Francois.Retief@nwu.ac.za](mailto:Francois.Retief@nwu.ac.za)>  
**Subject:** RE: EIA prosesse vir Alternatiewe energieprojekte in strategiese belangrike geografiese areas (REDZ en Transmission corridors)

Baie dankie Amanda

Het die korridor een gemis. As ek dit dus reg verstaan, doen ontwikkelings wat krag opwek, vol EIAs vereis en in die REDZs val, slegs BAs. Indien sulke ontwikkelings egter binne die korridors val, moet dit steeds vol EIAs doen. *If my understanding is correct, developments that generates electricity and which requires full EIAs, only need to do a BA if it falls within the REDZ. If such developments fall within a corridor, it still has to the full EIA.*

GN 114 will apply where the following are present-

- Application for environmental authorization when such facilities trigger Activity 1 of Listing Notice 2 of the EIA Regulations 2014, as amended;
- Large scale wind or solar photovoltaic energy facilities that trigger Activity 1 of Listing Notice 2 of the EIA Regulations 2014, as amended;
- Any other listed or specified activity for the realization of the facility; and
- **the entire proposed facility occurs within the REDZ.**

Further to the above, GN 114 excludes the following:-

- Applications for amendment of an EA, EMP and closure plan
- Applications for other renewable energy technologies such as biomass, hydroelectricity etc.
- Hybridization projects.

Net so doen ontwikkelings van transmissie en verspreidingsnetwerke wat EIAs vereis en waarvan die grootste gedeelte in die korridors val, slegs BAs.

*Similarly, developments for the transmission and distribution networks, which requires EIA and which the biggest part falls within the corridors, only does BAs*

Correct, however the capacity of the line must be 275kV and above (Listing Notice 2 activities), and application must be made for a specific route alignment and not a corridor approval. Route must be pre-negotiated.

Ek neem aan dat sulke netwerke wat ook in REDZ val, se grootste deel in die korridor sal van en dat dit daarom steeds slegs 'n BA sal doen. *I assume that such networks which also fall in a REDZ, will have its the biggest parts fall in the corridor and thus, still only need a BA to be done.* If the bigger part of the proposed development of facilities for large scale electricity transmission and distribution falls outside a corridor, the EIA Regulations will apply.

Wat egter waar so 'n netwerk/kraglyn grotendeels in 'n REDZ val en nie 'n korridor nie. Sal 'n volle EIA dan vereis word? *However, where such network/powerline mainly falls within the REDZ and not a corridor, will an full EIA then be required.*

Correct. GN 114 (the REDZ) only applies as indicated above.

Mooi week vir jou!

Theunis

NWU CORONA VIRUS: <http://www.nwu.ac.za/coronavirus/>  
Vywaringklousule / Disclaimer: <http://www.nwu.ac.za/gov-man/disclaimer.html>

---

**From:** Fiona Grimett  
**Sent:** 25 August 2020 12:03  
**To:** Rohaida Abed  
**Cc:** Bongeka Mtyana  
**Subject:** Re: 2020-08-0013 - Pre-Application Meeting - Ceres PV Developments

Hi Rohaida,

Please can you send me that document mentioned by Claude, which says you are not allowed to apply for the power line separately (as each project needs to be standalone), so that I can discuss internally, as I mentioned in the meeting.



## APPENDICES

**DRAFT BASIC ASSESSMENT REPORT:** Basic Assessment for the Proposed Development of Electrical Grid Infrastructure to support the proposed nine 175 MW Solar Photovoltaic Facilities and associated Infrastructure (i.e. Witte Wall PV 1, Witte Wall PV 2, Grootfontein PV 1, Grootfontein PV 2, Grootfontein PV 3, Hoek Doornen PV 1, Hoek Doornen PV 2, Hoek Doornen PV 3, and Hoek Doornen PV 4), near Touws River, Western Cape

---

***Basic Assessments for the Proposed Development of nine 175 MW Solar Photovoltaic Facilities and associated Electrical Grid Infrastructure (i.e. Witte Wall 1; Witte Wall 2; Witte Wall 3; Grootfontein 1; Grootfontein 2; Grootfontein 3; Hoek Doornen 1; Hoek Doornen 2; and Hoek Doornen 3), near Touws River, Western Cape – PRE-APPLICATION MEETING***

---

Thanks,  
Fiona

---

**From:** Rohaida Abed <RAbed@csir.co.za>  
**Sent:** 25 August 2020 09:40  
**To:** Dhiveshni Moodley; Paul Lochner; Rohaida Abed; Bongeka Mtyana; Fiona Grimett; Sindiswa Dlomo; Claude Veroniva  
**Subject:** Re: 2020-08-0013 - Pre-Application Meeting - Ceres PV Developments

Dear All

Please find attached a copy of the presentation for the meeting today at 10H00.

Thanks and kind regards,

Rohaida

>>> Rohaida Abed 24 Aug 2020 19:35 >>>

Dear All

As per the correspondence below, the pre-application meeting to discuss the Basic Assessments for the Proposed Development of nine Solar Photovoltaic Facilities and associated Electrical Grid Infrastructure (i.e. Witte Wall 1; Witte Wall 2; Witte Wall 3; Grootfontein 1; Grootfontein 2; Grootfontein 3; Hoek Doornen 1; Hoek Doornen 2; and Hoek Doornen 3), near Touws River, Western Cape, will take place as follows:

Date: 25 August 2020

Time: 10H00 - 12H00

Platform: MS Teams

The link to MS Teams appointment has been sent via MS Teams, however if you did not receive it, please see the link below:

[https://teams.microsoft.com/join/19%3a3eb7dab33434a0396f711ebda74a9407e40?thread\\_tacy271590289718362?context=%7b%22Id%22%3a%222fd3c5d5-ddb2-4ed3-9803-f99675928d44%22%2c%22Oid%22%3a%22526c153c-2c91-465a-a67e-b0bd3891ac7%22%7d](https://teams.microsoft.com/join/19%3a3eb7dab33434a0396f711ebda74a9407e40?thread_tacy271590289718362?context=%7b%22Id%22%3a%222fd3c5d5-ddb2-4ed3-9803-f99675928d44%22%2c%22Oid%22%3a%22526c153c-2c91-465a-a67e-b0bd3891ac7%22%7d)

We appreciate the Department's availability and quick response time.

We will send a copy of the presentation tomorrow prior to the meeting, so that you can view it on your side should the share screen option not function well.

Thanks and kind regards,

Rohaida

Cell: 072 204 6224

>>> Bongeka Mtyana <BMyana@environment.gov.za> 24 Aug 2020 14:34 >>>

Noted thank you.

Regards

Bongki

072 771 0107

---

**From:** Rohaida Abed <RAbed@csir.co.za>  
**Sent:** 24 August 2020 02:13 PM  
**To:** Bongeka Mtyana  
**Cc:** Dhiveshni Moodley; Paul Lochner; Fiona Grimett; Sindiswa Dlomo; Claude Veroniva  
**Subject:** Re: 2020-08-0013 - Pre-Application Meeting

Dear Bongeka

Thanks so much for your cell number.

We confirm that we will meet via MS Teams tomorrow, Tuesday 25 August 2020 from 10.00 to 12.00.

We will send out a meeting invite with the MS Teams link soon.

Thanks again and kind regards,

Rohaida

>>> Rohaida Abed 24 Aug 2020 13:11 >>>

Dear Bongeka

Thanks so much for your reply, it is appreciated.

We are just confirming the time and date with the Applicant, and will get back to you asap.

## APPENDICES

**DRAFT BASIC ASSESSMENT REPORT: Basic Assessment for the Proposed Development of Electrical Grid Infrastructure to support the proposed nine 175 MW Solar Photovoltaic Facilities and associated Infrastructure (i.e. Witte Wall PV 1, Witte Wall PV 2, Grootfontein PV 1, Grootfontein PV 2, Grootfontein PV 3, Hoek Doornen PV 1, Hoek Doornen PV 2, Hoek Doornen PV 3, and Hoek Doornen PV 4), near Touws River, Western Cape**

---

***Basic Assessments for the Proposed Development of nine 175 MW Solar Photovoltaic Facilities and associated Electrical Grid Infrastructure (i.e. Witte Wall 1; Witte Wall 2; Witte Wall 3; Grootfontein 1; Grootfontein 2; Grootfontein 3; Hoek Doornen 1; Hoek Doornen 2; and Hoek Doornen 3), near Touws River, Western Cape – PRE-APPLICATION MEETING***

---

Please could you send me your cell number as a precaution?

Thanks and kind regards,  
Rohaida

>>> Bongeka Mtyana <BMtyana@environment.gov.za> 24 Aug 2020 12:36 >>>  
Good day Rohaida,

Kindly note we are available for the meeting tomorrow 25 August 2020 from 10:00-12:00. You can send out an email invitation please note we are only available on Microsoft teams app for virtual meetings.

Regards  
Bongeka

---

**From:** Rohaida Abed <RAbed@csir.co.za>  
**Sent:** 21 August 2020 03:06 PM  
**To:** Bongeka Mtyana  
**Cc:** EIAAdmin; EIA Applications; Fiona Grimmett; Sindiswa Dlomo  
**Subject:** Re: 2020-08-0013  
Dear Bongeka

I trust that you are well. I am following up on the pre-application meeting request, reference number 2020-08-0013.

Please can you confirm if the meeting request has been decided on, and if the pre-application meeting will be scheduled, and the details thereof.

Thank you for your assistance with this.

Kind Regards,  
Rohaida

>>> EIA Applications <EIAApplications@environment.gov.za> 18 Aug 2020 13:01 >>>  
Dear Bongeka,

Please note that you have been allocated an application:

**Type of Application:** Pre-Application Meeting Request;

**Reference Number:** 2020-08-0013;

**Date Received:** 17/08/2020;

**Action Required:** Decide on meeting request.

Kindly let Ephron know which date the meeting is to be held, if it will be set.

\*EAP/Applicant: please use this reference number when submitting the application for EA/amendment application (page 1 of the application form), as well as attach the approved PP Plan if the application requires a PP process.

EIA Applications

Integrated Environmental Authorisations

Department of Environment, Forestry and Fisheries

Please note that this email is for the receipt and processing of online applications only, and is not monitored for responses. All queries must be directed to EIAAdmin@environment.gov.za.

You are advised that this mailbox has a 48 hour response time.

Please note that this mailbox has a 5mb mail limit.

---

**From:** Rohaida Abed <RAbed@csir.co.za>  
**Sent:** Monday, August 17, 2020 14:16  
**To:** EIA Applications <EIAApplications@environment.gov.za>  
**Cc:** Dhiveshni Moodley <DMoodley1@csir.co.za>; Paul Lochner <PLochner@csir.co.za>  
**Subject:** Request for a Pre-Application Meeting for 9 \* BA Processes, near Touws River, Western Cape

Good day

Please find attached a request for a pre-application meeting, completed on the pre-application meeting request form obtained from the DEFF website.

The meeting is requested to discuss the Basic Assessments for the Proposed Development of nine 115 MW Solar Photovoltaic Facilities and associated Electrical Grid Infrastructure (i.e. Witte Wall 1; Witte Wall 2; Witte Wall 3; Grootfontein 1; Grootfontein 2; Grootfontein 3; Hoek Doornen 1; Hoek Doornen 2; and Hoek Doornen 3), near Touws River, Western Cape.

Note that all nine projects will be discussed in one pre-application meeting in order to maximise on efficiency, however nine separate Application Forms for Environmental Authorisation will be submitted to the DEFF following the pre-application meeting.

Please also see attached the document control form as requested. Please note that this request for the pre-application meeting is being submitted via email, as per the instructions provided. Hence some of the information in the checklist relating to uploading documents on the Novell Filr is not

---

## APPENDICES

**DRAFT BASIC ASSESSMENT REPORT:** Basic Assessment for the Proposed Development of Electrical Grid Infrastructure to support the proposed nine 175 MW Solar Photovoltaic Facilities and associated Infrastructure (i.e. Witte Wall PV 1, Witte Wall PV 2, Grootfontein PV 1, Grootfontein PV 2, Grootfontein PV 3, Hoek Doornen PV 1, Hoek Doornen PV 2, Hoek Doornen PV 3, and Hoek Doornen PV 4), near Touws River, Western Cape

---

*Basic Assessments for the Proposed Development of nine 175 MW Solar Photovoltaic Facilities and associated Electrical Grid Infrastructure (i.e. Witte Wall 1; Witte Wall 2; Witte Wall 3; Grootfontein 1; Grootfontein 2; Grootfontein 3; Hoek Doornen 1; Hoek Doornen 2; and Hoek Doornen 3), near Touws River, Western Cape – PRE-APPLICATION MEETING*

---

applicable.

Kindly confirm receipt of the attached and this email.

Thank you for your assistance with this.

Kind Regards,  
Rohaida

CSIR - Environmental Management Services  
P. O. Box 17001, Congella, Durban, 4013  
Tel: 031 242 2318  
Fax: 031 261 2509  
Email: rabad@csir.co.za

'Please consider the environment before you print this email'  
'Please consider the environment before you print this email'

**Disclaimer**

This message and any attachments transmitted with it are intended solely for the addressee(s) and may be legally privileged and/or confidential. If you have received this message in error please destroy it and notify the sender. Any unauthorized usage, disclosure, alteration or dissemination is prohibited. The Department of Environmental Affairs accepts no responsibility for any loss whether it be direct, indirect or consequential, arising from information made available and actions resulting therefrom. The views and opinions expressed in this e-mail message may not necessarily be those of Management.

'Please consider the environment before you print this email'  
'Please consider the environment before you print this email'

**Disclaimer**

This message and any attachments transmitted with it are intended solely for the addressee(s) and may be legally privileged and/or confidential. If you have received this message in error please destroy it and notify the sender. Any unauthorized usage, disclosure, alteration or dissemination is prohibited. The Department of Environmental Affairs accepts no responsibility for any loss whether it be direct, indirect or consequential, arising from information made available and actions resulting therefrom. The views and opinions expressed in this e-mail message may not necessarily be those of Management.



## APPENDICES

**DRAFT BASIC ASSESSMENT REPORT:** Basic Assessment for the Proposed Development of Electrical Grid Infrastructure to support the proposed nine 175 MW Solar Photovoltaic Facilities and associated Infrastructure (i.e. Witte Wall PV 1, Witte Wall PV 2, Grootfontein PV 1, Grootfontein PV 2, Grootfontein PV 3, Hoek Doornen PV 1, Hoek Doornen PV 2, Hoek Doornen PV 3, and Hoek Doornen PV 4), near Touws River, Western Cape

---

### APPENDIX I.4: CORRESPONDENCE FROM THE DEFF WITH APPROVAL OF THE PRE-APPLICATION MEETING NOTES

---

**From:** Fiona Grimett <FGrimett@environment.gov.za>  
**To:** Rohaida Abed <RAbed@csir.co.za>  
**CC:** Sindiswa Dlomo <SDlomo@environment.gov.za>, Thulisile Nyalunga <TNyalunga@environment.gov.za>  
**Date:** 16 Sep 2020 22:16  
**Subject:** Fw: 2020-08-0013 - Pre-Application Meeting - Ceres PV Developments  
**Attachments:** Pre-App Meeting\_Notes\_Ceres\_PV\_250820\_FINAL.pdf

Dear Rohaida,

The pre-application meeting minutes for the proposed Ceres PV Developments are approved.

I also forgot to mention in the meeting, if any specialist studies are to be undertaken by the EAP in-house, the Department requires them to be peer reviewed (this is the current view applied to all applications). If you do not undertake the specialist studies required by the screening tool, motivation must be provided in the report, or if the impacts are not significant enough to warrant a specialist study, they can still be assessed and mitigation recommended by the EAP within the main report itself.

Regards,  
Fiona

---

**From:** Rohaida Abed <RAbed@csir.co.za>  
**Sent:** 02 September 2020 22:25  
**To:** Bongeka Mtyana; Fiona Grimett  
**Cc:** Dhiveshni Moodley; Paul Lochner; Sindiswa Dlomo; Claude Veroniva  
**Subject:** Re: 2020-08-0013 - Pre-Application Meeting - Ceres PV Developments

Dear Fiona and Bongeka

We hope that you are well.

Thanks again for your guidance on the proposed Ceres PV Developments.

Please find attached the notes of the pre-application meeting that took place on 25 August 2020. Please let us know if you require any amendments.

Thanks and kind regards,  
Rohaida  
>>> Rohaida Abed 01 Sep 2020 18:41 >>>  
Dear Fiona

Thanks again for your guidance and assistance with the proposed Ceres PV Developments.

As discussed at the pre-application meeting on 25 August 2020, please see attached the Public Participation Plan for your review. The plan was discussed at the pre-application meeting, and we have included the potential requirement of online workshops via MS Teams with those I&APs that may require it, as recommended by the DEFF during the pre-application meeting.

We look forward to your feedback.

As per the earlier email sent, we will send the meeting notes once the last few post meeting email communications around the combination of applications is concluded.

Thanks and kind regards,  
Rohaida  
>>> Rohaida Abed 25 Aug 2020 09:40 >>>  
Dear All

Please find attached a copy of the presentation for the meeting today at 10H00.

Thanks and kind regards,  
Rohaida  
>>> Rohaida Abed 24 Aug 2020 19:35 >>>  
Dear All

As per the correspondence below, the pre-application meeting to discuss the Basic Assessments for the Proposed Development of nine Solar Photovoltaic Facilities and associated Electrical Grid Infrastructure (i.e. Witte Wall 1; Witte Wall 2; Witte Wall 3; Grootfontein 1; Grootfontein 2; Grootfontein 3; Hoek Doornen 1; Hoek Doornen 2; and Hoek Doornen 3), near Touws River, Western Cape, will take place as follows:

Date: 25 August 2020  
Time: 10H00 - 12H00  
Platform: MS Teams

The link to MS Teams appointment has been sent via MS Teams, however if you did not receive it, please see the link below:

<https://teams.microsoft.com/join/19%3a3eb7dabc3343a8396f711ebda74a940%40thread.tacv2/1598289718362?context=%7b%22Tid%22%3a%222fd3c5d5-ddb2-4ed3-9803-f89675928df4%22%2c%22Oid%22%3a%22526c153c-2c91-465a-a67e->

## APPENDICES

**DRAFT BASIC ASSESSMENT REPORT:** Basic Assessment for the Proposed Development of Electrical Grid Infrastructure to support the proposed nine 175 MW Solar Photovoltaic Facilities and associated Infrastructure (i.e. Witte Wall PV 1, Witte Wall PV 2, Grootfontein PV 1, Grootfontein PV 2, Grootfontein PV 3, Hoek Doornen PV 1, Hoek Doornen PV 2, Hoek Doornen PV 3, and Hoek Doornen PV 4), near Touws River, Western Cape

---

[fb0cd3891ac7%22%7d](#)

We appreciate the Department's availability and quick response time.

We will send a copy of the presentation tomorrow prior to the meeting, so that you can view it on your side should the share screen option not function well.

Thanks and kind regards,  
Rohaida

Cell: 072 204 6224

>>> Bongeka Mtyana <BMtyana@environment.gov.za> 24 Aug 2020 14:34 >>>  
Noted thank you.

Regards  
Bongi  
072 771 0107

---

**From:** Rohaida Abed <RAbed@csir.co.za>  
**Sent:** 24 August 2020 02:13 PM  
**To:** Bongeka Mtyana  
**Cc:** Dhiveshni Moodley; Paul Lochner; Fiona Grimett; Sindiswa Dlomo; Claude Veronisa  
**Subject:** Re: 2020-08-0013 - Pre-Application Meeting

Dear Bongeka

Thanks so much for your cell number.

We confirm that we will meet via MS Teams tomorrow, Tuesday 25 August 2020 from 10:00 to 12:00.

We will send out a meeting invite with the MS Teams link soon.

Thanks again and kind regards,  
Rohaida

>>> Rohaida Abed 24 Aug 2020 13:11 >>>

Dear Bongeka

Thanks so much for your reply, it is appreciated.

We are just confirming the time and date with the Applicant, and will get back to you asap.

Please could you send me your cell number as a precaution?

Thanks and kind regards,  
Rohaida

>>> Bongeka Mtyana <BMtyana@environment.gov.za> 24 Aug 2020 12:36 >>>  
Good day Rohaida,

Kindly note we are available for the meeting tomorrow 25 August 2020 from 10:00-12:00. You can send out an email invitation please note we are only available on Microsoft teams app for virtual meetings.

Regards  
Bongeka

---

**From:** Rohaida Abed <RAbed@csir.co.za>  
**Sent:** 21 August 2020 03:08 PM  
**To:** Bongeka Mtyana  
**Cc:** EIAAdmin; EIA Applications; Fiona Grimett; Sindiswa Dlomo  
**Subject:** Re: 2020-08-0013  
Dear Bongeka

I trust that you are well. I am following up on the pre-application meeting request, reference number 2020-08-0013.

Please can you confirm if the meeting request has been decided on, and if the pre-application meeting will be scheduled, and the details thereof.

Thank you for your assistance with this.

## APPENDICES

**DRAFT BASIC ASSESSMENT REPORT:** Basic Assessment for the Proposed Development of Electrical Grid Infrastructure to support the proposed nine 175 MW Solar Photovoltaic Facilities and associated Infrastructure (i.e. Witte Wall PV 1, Witte Wall PV 2, Grootfontein PV 1, Grootfontein PV 2, Grootfontein PV 3, Hoek Doornen PV 1, Hoek Doornen PV 2, Hoek Doornen PV 3, and Hoek Doornen PV 4), near Touws River, Western Cape

---

Kind Regards,  
Rohaida

>>> EIA Applications <EIAApplications@environment.gov.za> 18 Aug 2020 13:01 >>>

Dear Bongeka.

Please note that you have been allocated an application:

**Type of Application:** Pre-Application Meeting Request;

**Reference Number:** 2020-08-0013;

**Date Received:** 17/08/2020;

**Action Required:** Decide on meeting request.

Kindly let Ephron know which date the meeting is to be held, if it will be set.

\*EAP/Applicant: please use this reference number when submitting the application for EA/amendment application (page 1 of the application form), as well as attach the approved PP Plan if the application requires a PP process.

EIA Applications

Integrated Environmental Authorisations

Department of Environment, Forestry and Fisheries

**Please note that this email is for the receipt and processing of online applications only, and is not monitored for responses. All queries must be directed to [EIAAdmin@environment.gov.za](mailto:EIAAdmin@environment.gov.za).**

**You are advised that this mailbox has a 48 hour response time.**

*Please note that this mailbox has a 5mb mail limit.*

---

**From:** Rohaida Abed <RAbed@csir.co.za>

**Sent:** Monday, August 17, 2020 14:16

**To:** EIA Applications <EIAApplications@environment.gov.za>

**Cc:** Dhiveshni Moodley <DMoodley1@csir.co.za>; Paul Lochner <PLochner@csir.co.za>

**Subject:** Request for a Pre-Application Meeting for 9 \* BA Processes, near Touws River, Western Cape

Good day

Please find attached a request for a pre-application meeting, completed on the pre-application meeting request form obtained from the DEFF website.

The meeting is requested to discuss the Basic Assessments for the Proposed Development of nine 115 MW Solar Photovoltaic Facilities and associated Electrical Grid Infrastructure (i.e. Witte Wall 1; Witte Wall 2; Witte Wall 3; Grootfontein 1; Grootfontein 2; Grootfontein 3; Hoek Doornen 1; Hoek Doornen 2; and Hoek Doornen 3), near Touws River, Western Cape.

Note that all nine projects will be discussed in one pre-application meeting in order to maximise on efficiency, however nine separate Application Forms for Environmental Authorisation will be submitted to the DEFF following the pre-application meeting.

Please also see attached the document control form as requested. Please note that this request for the pre-application meeting is being submitted via email, as per the instructions provided. Hence some of the information in the checklist relating to uploading documents on the Novell Filr is not applicable.

Kindly confirm receipt of the attached and this email.

Thank you for your assistance with this.

Kind Regards,  
Rohaida

CSIR - Environmental Management Services

P. O. Box 17001, Congella, Durban, 4013

Tel: 031 242 2318

Fax: 031 261 2509

Email: [rabed@csir.co.za](mailto:rabed@csir.co.za)

'Please consider the environment before you print this email'

'Please consider the environment before you print this email'

### Disclaimer

This message and any attachments transmitted with it are intended solely for the addressee(s) and may be legally privileged and/or confidential. If you have received this message in error please destroy it and notify the sender. Any unauthorized usage, disclosure, alteration or dissemination is prohibited. The Department of Environmental Affairs accepts no responsibility for any loss whether it be direct, indirect or consequential, arising from information made available and actions resulting therefrom. The views and opinions expressed in this e-mail message may not necessarily be those of Management.

## APPENDICES

**DRAFT BASIC ASSESSMENT REPORT:** Basic Assessment for the Proposed Development of Electrical Grid Infrastructure to support the proposed nine 175 MW Solar Photovoltaic Facilities and associated Infrastructure (i.e. Witte Wall PV 1, Witte Wall PV 2, Grootfontein PV 1, Grootfontein PV 2, Grootfontein PV 3, Hoek Doornen PV 1, Hoek Doornen PV 2, Hoek Doornen PV 3, and Hoek Doornen PV 4), near Touws River, Western Cape

---

### APPENDIX I.5: CORRESPONDENCE FROM THE DEFF WITH APPROVAL OF THE COMBINATION AND MULTIPLE EA REQUEST

---

**From:** EIAAdmin <EIAAdmin@environment.gov.za>  
**To:** Rohaida Abed <RAbed@csir.co.za>, "claude@veroniva.co.za" <claude@veroniva.co.za>  
**CC:** Thulisile Nyalunga <TNyalunga@environment.gov.za>, EIAAdmin <EIAAdmin@environment.gov.za>  
**Date:** 06 Oct 2020 13:49  
**Subject:** 14/12/16/3/1/1/160  
**Attachments:** 14-12-16-3-1-1-160.pdf

Good day.

Please find herein the attached letter for the above mentioned.

I hope you find all in order.

Thank you.

Kind Regards,  
Integrated Environmental Authorisations:  
IEM Systems and Tools Coordination  
Tel (012) 399 8630 / 9370 / 9367  
Email: [EIAAdmin@environment.gov.za](mailto:EIAAdmin@environment.gov.za)



**environmental affairs**

Department:  
Environmental Affairs  
REPUBLIC OF SOUTH AFRICA

*Please be informed that the Departmental EIA related templates were updated. It can be downloaded from the Departmental web address at [https://www.environment.gov.za/documents/forms#legal\\_authorisations](https://www.environment.gov.za/documents/forms#legal_authorisations).*

'Please consider the environment before you print this email'

#### Disclaimer

This message and any attachments transmitted with it are intended solely for the addressee(s) and may be legally privileged and/or confidential. If you have received this message in error please destroy it and notify the sender. Any unauthorized usage, disclosure, alteration or dissemination is prohibited. The Department of Environmental Affairs accepts no responsibility for any loss whether it be direct, indirect or consequential, arising from information made available and actions resulting there from. The views and opinions expressed in this e-mail message may not necessarily be those of Management.

## APPENDICES

**DRAFT BASIC ASSESSMENT REPORT:** Basic Assessment for the Proposed Development of Electrical Grid Infrastructure to support the proposed nine 175 MW Solar Photovoltaic Facilities and associated Infrastructure (i.e. Witte Wall PV 1, Witte Wall PV 2, Grootfontein PV 1, Grootfontein PV 2, Grootfontein PV 3, Hoek Doornen PV 1, Hoek Doornen PV 2, Hoek Doornen PV 3, and Hoek Doornen PV 4), near Touws River, Western Cape

---



### environment, forestry & fisheries

Department:  
Environment, Forestry and Fisheries  
REPUBLIC OF SOUTH AFRICA

Private Bag X 447· PRETORIA · 0001· Environment House -473 Steve Biko Road, Arcadia, · PRETORIA

DEA Reference: 14/12/16/3/1/1/160

Enquiries: Ms Thulisile Nyalunga

Telephone: 012 399 9405 E-mail: [tnyalunga@environment.gov.za](mailto:tnyalunga@environment.gov.za)

Ms Rohaida Abed  
CSIR Environmental Management Services  
P. O Box 320  
STELLENBOSCH  
7599

Telephone Number: (021) 888 2486  
Email Address: [RAbed@csir.co.za](mailto:RAbed@csir.co.za)

#### PER MAIL / E-MAIL

Dear Ms Abed

**APPLICATION FOR PERMISSION TO UNDERTAKE A COMBINED APPLICATION IN TERMS OF REGULATION 11(4) AND THE ISSUING OF MULTIPLE ENVIRONMENTAL AUTHORISATIONS IN TERMS OF REGULATION 25 (1) AND (2) OF THE EIA REGULATIONS, 2014 AS, AMENDED FOR THE DEVELOPMENT OF NINE 175 MW SOLAR PHOTOVOLTAIC FACILITIES AND ASSOCIATED ELECTRICAL GRID INFRASTRUCTURE (I.E. WITTE WALL 1; WITTE WALL 2; GROOTFONTEIN 1; GROOTFONTEIN 2; GROOTFONTEIN 3; HOEK DOORNEN 1; HOEK DOORNEN 2; HOEK DOORNEN 3; AND HOEK DOORNEN 4), NEAR TOUWS RIVER, WESTERN CAPE PROVINCE**

Your correspondence requesting permission to undertake a combined application process in terms of Regulation 11(4) of the EIA Regulations, 2014, as amended, for the abovementioned project, received by the Department on 09 and 30 September 2020, refers.

The Department hereby grants permission to undertake a combined application process in terms of Regulation 11(4) of the EIA Regulations, 2014, as amended, per the proposed process outlined in your request and supporting motivation. The Department further confirms, in terms of Regulation 11 (5), that the total amount payable for the application fee will be **R36 000.00** for the combined basic assessment application.

You are hereby reminded of Section 24F of the National Environmental Management Act, Act No 107 of 1998, as amended, that no activity may commence prior to an environmental authorisation being granted by the Department.

Yours sincerely

Mr Sabelo Malaza

Chief Director: Integrated Environmental Authorisations

Department of Environment, Forestry and Fisheries

Signed by: Mr Vusi Skosana

Designation: Director: National Infrastructure Development

Date: 07 October 2020

cc	Claude Bosman	Representative of Project Applicant (Veroniva (PTY) Ltd)	<a href="mailto:claudio@veroniva.co.za">claudio@veroniva.co.za</a>
----	---------------	--	--