

PROPOSED DEVELOPMENT OF THE KURUMAN PHASE 1 AND 2 WIND ENERGY FACILITIES
AND SUPPORTING ELECTRICAL INFRASTRUCTURE TO THE PROPOSED WIND ENERGY
FACILITIES, KURUMAN, NORTHERN CAPE PROVINCE

February 2018

BACKGROUND INFORMATION DOCUMENT



BACKGROUND INFORMATION DOCUMENT

INTEGRATED PUBLIC PARTICIPATION PROCESS FOR THE PROPOSED DEVELOPMENT OF THE KURUMAN PHASE 1 AND 2 WIND ENERGY FACILITIES AND SUPPORTING ELECTRICAL INFRASTRUCTURE TO THE PROPOSED WIND ENERGY FACILITIES, KURUMAN, NORTHERN CAPE PROVINCE

BACKGROUND

Mulilo Renewable Project Developments (Pty) Ltd (hereafter, "Mulilo") is proposing to construct two Wind Energy Facilities (WEFs), namely Kuruman Phase 1 WEF and Kuruman Phase 2 WEF and supporting electrical infrastructure, in the Ga-Segonyana Local Municipality and the John Taolo Gaetsewe District Municipality, 8 km and 37 km south west from Kuruman and from Kathu, respectively, in the Northern Cape Province. The proposed projects are being developed to generate electricity via wind energy which will feed into and supplement the national electricity grid.

The respective farms portions affected by the two WEFs and the supporting electrical infrastructure and the relative location of the proposed projects are shown on the opposite page. Since the WEFs and supporting electrical infrastructure are proposed within the same geographical area, an integrated Public Participation Process (PPP) will be undertaken for the proposed projects. However, separate applications for Environmental Authorisation (EA) will be lodged with the National Department of Environmental Affairs (DEA).

The Council for Scientific and Industrial Research (CSIR) has been appointed as the independent Environmental Assessment Practitioner (EAP) to manage the Environmental Impact Assessment (EIA) for the proposed wind farms and the Basic Assessment (BA) process for the proposed supporting electrical infrastructure.

AIM OF THIS DOCUMENT

The aim of this Background Information Document (BID) is to provide Interested and Affected Parties (I&APs) with:

- Background information on the proposed projects;
- A description of the combined Environmental Authorisation and Public Participation Processes (PPP) that will be undertaken for the projects;
- Details on how I&APs can become involved in the proposed projects by registering their interest in the projects, raising issues of concern or interest, and receiving further information.

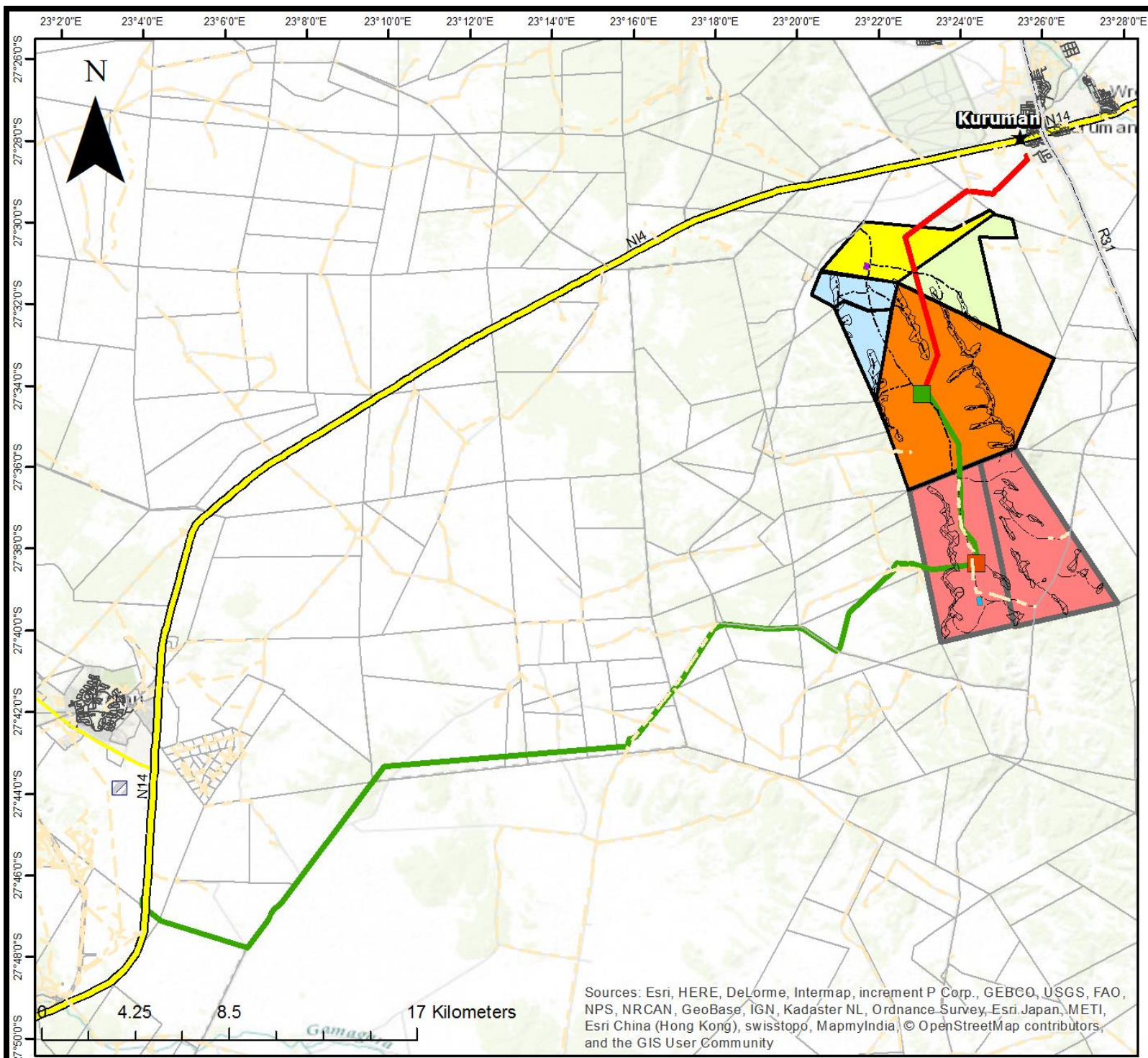
As a registered I&AP, there will be opportunities for involvement in the EIA process by receiving information, the contribution of issues and commenting on draft reports. The input received from I&APs together with the information and assessment provided by the EAP, will assist the Competent Authority, the DEA, with their decision making process.

NEED AND JUSTIFICATION OF THE PROPOSED PROJECTS

The need to reduce greenhouse gas emissions and the importance of a secure and diversified energy supply has resulted in a global shift towards, and an increased focus on, the use of renewable energy technologies. In support of this, the national government has encouraged the utilisation of renewable energy through national policy and strategic planning.

The Integrated Resource Plan (IRP) for South Africa for the period 2010 to 2030 (referred to as "IRP2010") and the IRP Updated Report (2013) proposes to secure 17 800 MW of renewable energy capacity by 2030. The Department of Energy (DOE) has subsequently entered into a bidding process for the procurement of 3 725 MW of renewable energy from Independent Power Producers (IPPs) by 2016 and beyond to enable the Department to meet this target. On 18 August 2015, an additional procurement target of 6 300 MW to be generated from renewable energy sources was added to the Renewable Energy Independent Power Producer Procurement Programme (REIPPPP) for the years 2021 - 2025, as published in Government Gazette 39111. The additional target allocated for wind energy, solar PV energy, and solar CSP energy is 3 040 MW, 2 200 MW, and 600 MW respectively. Linked to this, in 2011, the Department of Energy (DOE) launched the REIPPPP and invited potential IPPs to submit proposals for the financing, construction, operation and maintenance of the first 3 725 MW of onshore wind, solar thermal, solar PV, biomass, biogas, landfill gas or small hydro projects. The bidders with the highest rankings (according to the aforementioned criteria) are appointed as "Preferred Bidders" by the DoE.

The proposed projects aim to contribute to the above strategic imperative.



Legend

- Existing roads**
- NATIONAL ROUTE
 - Main road
 - Arterial route
 - Street
 - Secondary road
 - Other access
- Kuruman WEF Phase 1**
- Kuruman WEF Substation Phase 1
 - Construction Yard / Laydown Area Phase 1
 - WEF Phase 1 Farm Portions
 - Turbine Corridors
 - Access Roads
- Kuruman WEF Phase 2**
- Kuruman WEF Substation Phase 2
 - Construction Yard / Laydown Area Phase 2
 - WEF Phase 2 Farm Portions
- Supporting electrical infrastructure (Separate BA Process)**
- Alternative 1: Line from WEF to Ferrum substation (50km)
 - Alternative 2: Line from WEF to Segame substation (10km)
 - Turbine Corridors
- Eskom Ferrum Substation (existing)**
- Eskom Ferrum Substation (existing)
- Farms affected by the WEF**
- Bramcote
 - Carrington
 - Hartland
 - Rossdale
 - Woodstock

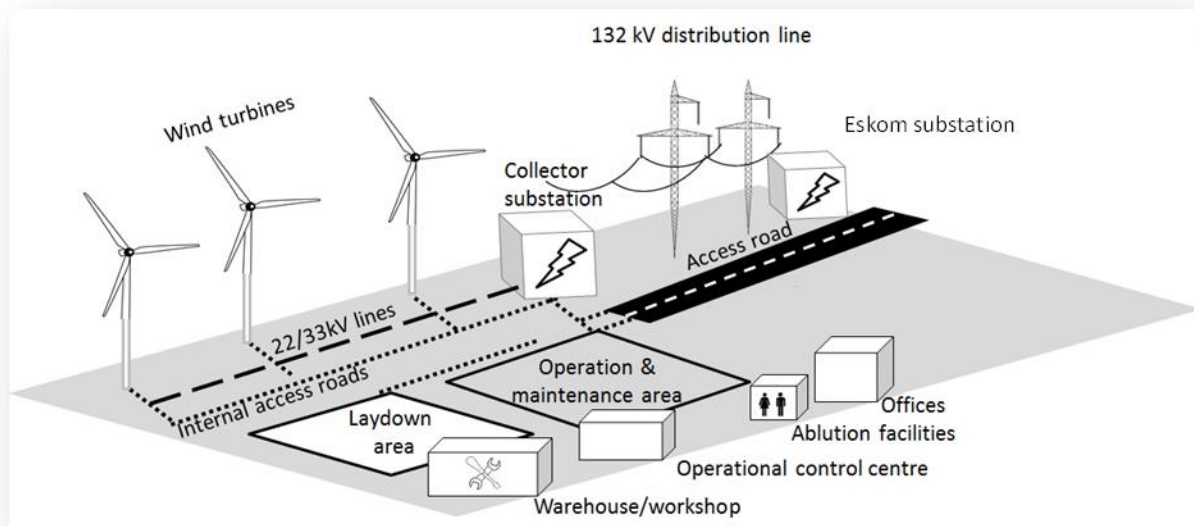


Sources: Esri, HERE, DeLorme, Intermap, increment P Corp., GEBCO, USGS, FAO, NPS, NRCAN, GeoBase, IGN, Kadaster NL, Ordnance Survey, Esri Japan, METI, Esri China (Hong Kong), swisstopo, MapmyIndia, © OpenStreetMap contributors, and the GIS User Community

WHAT DO THE PROPOSED PROJECTS ENTAIL?

The proposed projects will be situated on land that is owned by a third party and as such, consent will be obtained from the respective landowners for the development of the WEFs. It is anticipated that the properties on which the proposed projects will be constructed will be leased from the landowners.

It is proposed that each WEF will have a generation capacity of between 200 - 240 MW. The anticipated maximum amount of turbines to be constructed for each project is 52. These turbines will have a turbine height of 140 m and a rotor diameter of 80 m. In order to connect the proposed WEFs to the national grid, supporting electrical infrastructure would need to be constructed. This includes a 132 kV distribution line routed either to the Ferrum substation (located in Kathu) or to the Segame substation (located in Kuruman) and two collector substations (one for each WEF). Each WEF facility will consist of the components presented in the figure below. The components and their dimensions will be confirmed and discussed within the Scoping & EIA Reports produced for each WEF.



ENVIRONMENTAL AUTHORISATION PROCESS

In terms of the National Environmental Management Act (NEMA) (Act no. 107 of 1998) and the 2014 NEMA Environmental Impact Assessment (EIA) Regulations, as amended, the proposed projects potentially trigger, amongst others, the following activities:

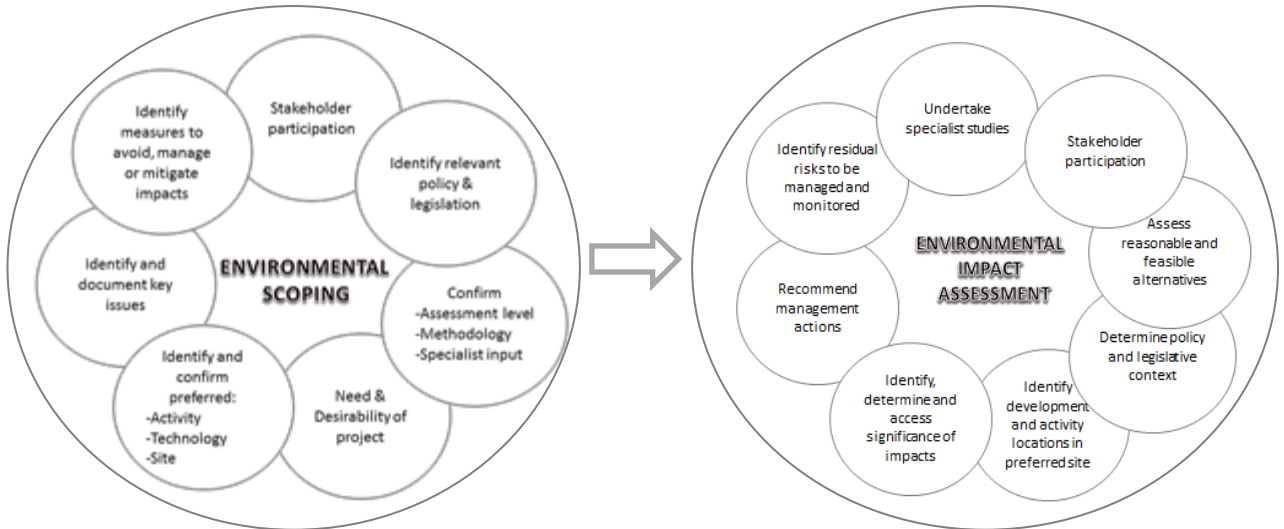
	WEF	Electrical infrastructure
GN R. 327 Listing Notice 1:	11, 12, 14, 19, 24, 56	11, 12, 19
GN R. 325 Listing Notice 2:	1, 15	
GN R. 324 Listing Notice 3:	4, 10, 12, 14, 18	12, 14

The EIA process is also designed to meet the requirements of the National Heritage Resources Act, 1999 (Act 25 of 1999). A Water Use Licence Application will also be submitted for the WEFs and supporting electrical infrastructure in accordance with the National Water Act (NWA) (Act No. 36 of 1998, as amended).

Note from the CSIR: A precautionary approach has been adopted by the CSIR when identifying listed activities, in that if there is any doubt at this stage of the project planning whether or not an activity is included in the project design, then the activity is listed. This list may be refined during the course of the Scoping & EIA Processes, and listed triggers may be removed or added as applicable.

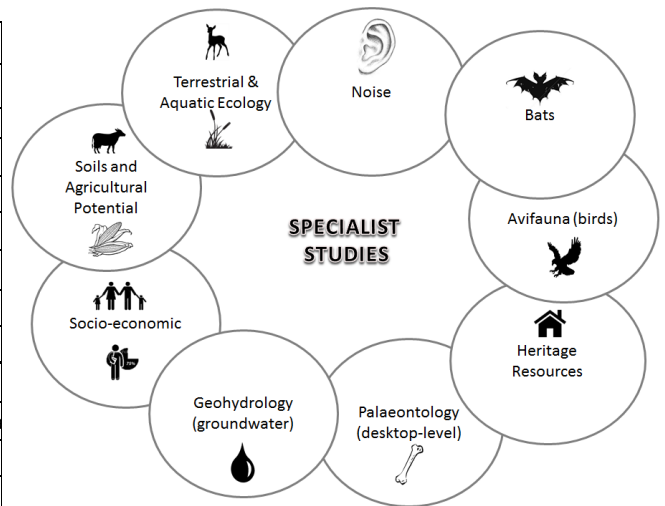
The applicable listed activities require EA from the DEA prior to the undertaking thereof. The main steps in Scoping & EIA Process are discussed and shown in the figure below. As also shown in Figure 2, proactive engagement with stakeholders forms a key component of the entire Scoping & EIA Process.

The Scoping & EIA process for the proposed WEF developments



Specialist studies to be conducted

Name	Organisation	Specialist Study
Specialists		
Kerry Schwartz	SiVEST	Visual
Nic Wiltshire	CTS Heritage	Heritage (incl. Palaeontology)
Natasha van der Haar	Enviroswift	Freshwater
Morne de Jager	EAR	Noise
Johann Lanz	Private consultant	Soils and Agricultural
Elena Broughton	Urban Econ	Socio-economic
Iris Wink	JG Afrika	Transportation Study
Julian Conrad	GEOSS	Geohydrological Study
Simon Todd	3foxes Biodiversity Solutions	Terrestrial Ecology (Fauna and Flora)
Chris van Rooyen	Chris van Rooyen Consulting	Avifauna
Werner Marias	Animalia	Bats



Step 1: Notify Authorities and I&APs of the Scoping and EIA Processes (30 days) (WE ARE CURRENTLY AT THIS STEP)

The initial step entails providing notification to Authorities and potential I&APs of the proposed projects and the commencement of the Scoping & EIA Processes. An initial database of potential I&APs and Authorities will be compiled. Authorities and potential I&APs will be provided with a BID (i.e. this document), including a Comment and Registration Form and written notification. Advertisements will also be placed in local newspapers and site notices will be placed at the project site as well as in the closest towns during this phase.

During this period, I&APs are required to register their interest on the project database in order to be included from the outset of the Scoping & EIA Processes. **In terms of the EIA Regulations, in order to register as an I&AP, a person must provide their comments together with their name, contact details (preferred method of notification, e.g. e-mail address or fax number) and an indication of any direct business, financial, personal or other interest which they have in the application. Failure to do so may lead to a person not being registered as an I&AP for these projects.**

I&APs will be provided with a 30-day review period within which to raise any issues or concerns for inclusion in the Scoping Reports.

Step 2: Preparation of Applications for Environmental Authorisation (EA) and Scoping Reports

Two separate Applications for EA for the proposed WEF developments will be prepared. In addition, the Scoping Reports and a Plan of Study for EIA will be compiled in line with Appendix 2 of the 2014 EIA Regulations (GN R326).

All issues and concerns raised by the Authorities and I&APs during the review of the BID will be recorded and compiled into an Issues and Responses Trail for inclusion in the Scoping Reports.

Step 3: Submission of Applications for EA

Submit the Applications for EA for the proposed WEF developments (i.e. a total of two applications) to the National DEA for processing.

Step 4: Authority and I&AP Review of the Scoping Reports (30 days)

The Scoping Reports will be released to the public for a 30-day review period. All Authorities and registered I&APs will be notified in writing of the opportunity to review the Scoping Reports. A Comment and Registration Form will also be sent with the written notification to all registered I&APs. Copies of the Scoping Reports will be placed on the project website (<http://www.csir.co.za/eia/kuruman.html>) and at the local public libraries. The reports will be placed in the following libraries:

- Kuruman Public Library, Corner of Foskor & Voortrekker Street; and
- Kathu Public Library, 38 Kromhout Street, Kathu

Step 5: Commence with the undertaking of Specialist Studies and Submission of Scoping Reports to the National DEA for Decision-Making

The comments received from I&APs during the 30-day review of the Scoping Reports will be recorded into a comprehensive Issues and Responses Trail, and will be included in the Scoping Reports before submission to the DEA. The Scoping Reports will thereafter be finalised and submitted to the DEA for decision making. The DEA will have 43 days (from receipt of the Scoping Reports) to either accept the Scoping Reports with or without conditions, or refuse EA.

All comments received on the Scoping Reports will be responded to within the Issues and Responses Trail. A copy of the Issues and Responses Trail will be sent to all I&APs registered on the project database.

Step 6: Preparation of EIA and BA Reports (including the Environmental Management Programme (EMPr)) and submission of the EA application for the supporting electrical infrastructure

Once the National DEA accepts the Scoping Reports, the Impact Assessment Phase may commence. During this phase, the EIA Reports (including the EMPr) and a BA Report for the supporting electrical infrastructure will be compiled in line with the 2014 EIA Regulations. An EA application will also be compiled for the supporting electrical infrastructure that will be subject to a BA process.

Step 7: Authority and I&AP Review of the EIA and BA Reports (30 days)

During this phase, the EIA and BA Reports will be released to the public for a 30-day review period. All Authorities and registered I&APs on the project database will be notified in writing of the opportunity to review the EIA and BA Reports. A Comment and Registration Form will also be sent with the written notification to all registered I&APs. Copies of the EIA and BA Reports will be placed on the project website and at the local public libraries. Depending on the interest in the project, public meetings may be scheduled.

Step 8: Submission of the EIA and BA Reports to the DEA for Decision-Making

A key component of the process is documenting and responding to the comments received from I&APs and Authorities. The comments received from I&APs during the 30-day review of the EIA and BA Reports will be recorded into a comprehensive Comments and Responses Trail, and will be included in the EIA and BA Reports before submission to the DEA. Following submission of the reports, the DEA will have 10 days (from receipt of the EIA and BA Reports) to acknowledge the reports and thereafter, the DEA will have 107 days to grant or refuse EA.

Step 9: Notification of Environmental Decision and Appeal Period

All registered stakeholders on the project database will be notified in writing of the environmental decision for the proposed projects, and will be informed of the opportunity to appeal.

PUBLIC PARTICIPATION PROCESS

Public involvement forms an important component of the EIA and BA Processes by assisting in the identification of issues and alternatives to be evaluated. The following outlines the steps in the PPP which will be undertaken to run in parallel to the BA and Scoping & EIA Processes.

	PPP action by project team	HOW CAN YOU BE INVOLVED IN THIS PROCESS?
Step 1: Notify Authorities and I&APs of the Scoping and EIA Processes (30 days)	Notify Authorities and I&APs of the project by providing: <ul style="list-style-type: none"> ○ Notification letters ○ Comments & Registration Forms ○ Basic Information Document ○ Newspaper advertisements ○ Site notices 	<ul style="list-style-type: none"> ✓ Register as an I&APs ✓ Provide comments on potential issues that should be considered during the EIA
Step 2: Preparation of Applications for EA, and Scoping Reports		
Step 3: Submission of Applications for EA		
Step 4: Authority and I&AP Review of the Scoping Reports (30 days)	Provide Authority and I&APs with Reports for review	✓ Review Scoping Reports and provide written comment
Step 5: Submission of Scoping Reports to the National DEA for Decision-Making		
Step 6: Preparation of EIA and BA Reports and submission of the EA application for the supporting electrical infrastructure		
Step 7: Authority and I&AP Review of the BA and EIA Reports and EMPr (30 days)	Provide Authorities and I&APs with Reports for review	✓ Review Basic Assessment- and EIA Reports and provide written comment
Step 8: Submission of the BA and EIA Reports to the National DEA for Decision-Making		
Step 9: Notification of Environmental Decision and Appeal Period	Notify I&APs of the Authorities' decision on Environmental Authorisation	✓ Opportunity to lodge appeals

GET INVOLVED!

1. Respond to our invitation for your involvement advertised in local newspapers.
2. Email, fax or mail the attached Comment and Registration Form to CSIR: **Lizande Kellerman, address: PO Box 320, Stellenbosch, 7599 Fax: 021 888 2693 or email: LKellerman@csir.co.za.**
3. Visit the project website at <https://www.csir.co.za/environmental-impact-assessment> to download relevant project information.
4. Review the various reports within the stipulated comment periods provided.
5. Attend any public meeting, which may be held during the review period.

To register as an I&AP, please complete the Comment and Registration Form included with this BID and kindly return to:

CSIR
Lizande Kellerman
PO Box 320, Stellenbosch, 7599
Email: LKellerman@csir.co.za
Tel: 021 888 2489