

ENVIRONMENTAL IMPACT ASSESSMENT  
Final Environmental Impact Assessment Report for  
the Proposed Construction, Operation and  
Decommissioning of a Seawater Reverse Osmosis  
Plant and Associated Infrastructure in  
Tongaat, Kwazulu-Natal

FINAL  
EIA  
REPORT



APPENDIX D:  
Layout Maps

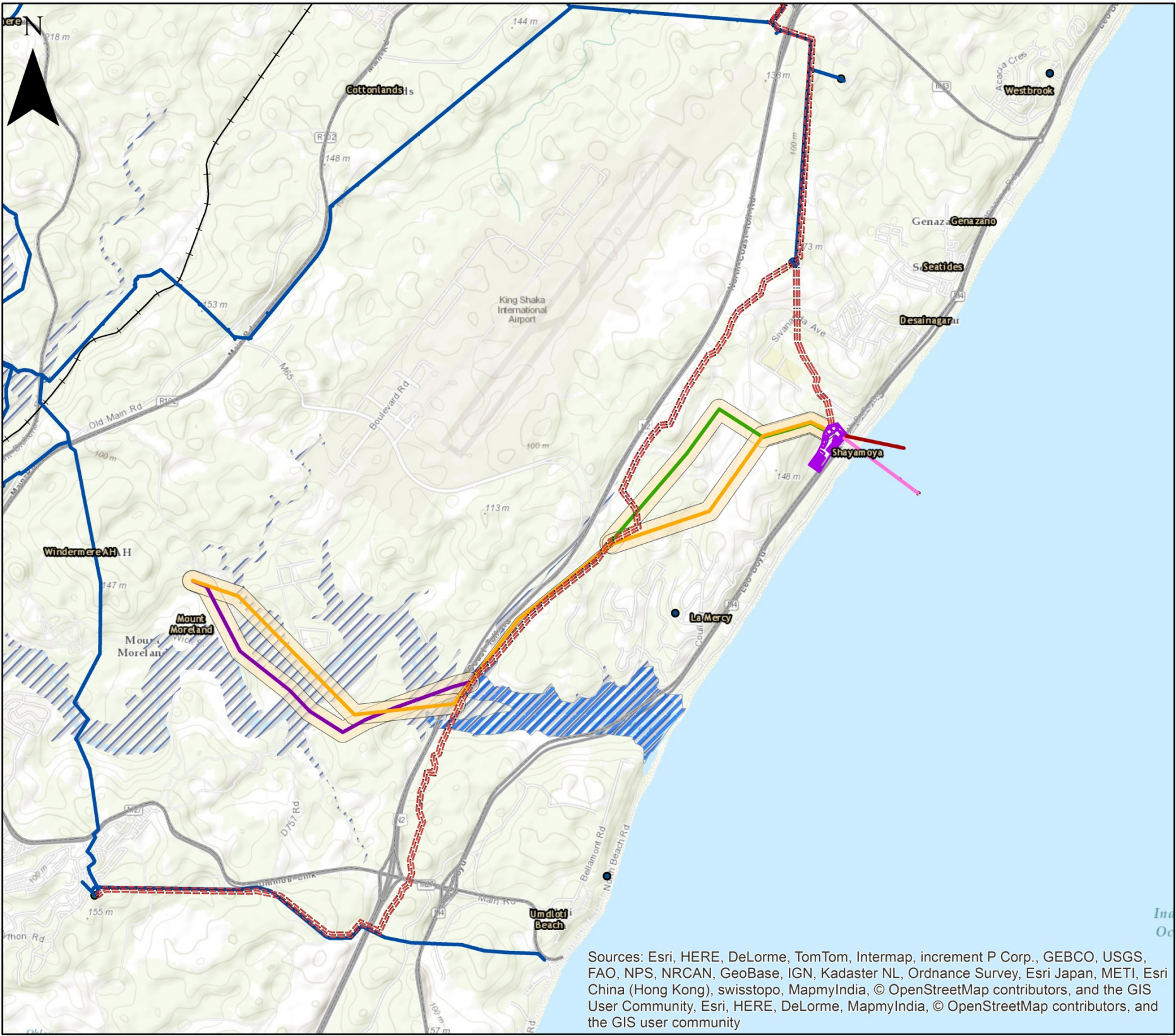
## APPENDIX D

### MAPS

---

Map 1:	Topographic map 1/50 000 showing the location of the proposed project	1
Map 2:	Location map for the proposed project	2
Map 3:	Landcover (SANBI)	3
Map 4:	Proposed project in relation to vegetation types and remaining Threatened ecosystems	4
Map 5:	Proposed project in relation to CBA as defined in the EKZNW Terrestrial Systematic Conservation Plan	5





**TONGAAT**

- Seawater Intake
- Brine Discharge
- Proposed desalination site
- Proposed Potable Water Pipeline
- Proposed Powerline
- Proposed powerline\_Alternative 2
- Proposed powerline\_Alternative 1
- Proposed powerline Corridor
- Existing Bulk Water
- RailwayLines
- Roads
- Towns
- Existing reservoirs
- Estuarine\_functional\_zones\_2015
- Mdloti\_100YrFloodline

SCALE:

1:50 000

TITLE:

Proposed Sea Reverse Osmosis Plant and  
associated Infrastructure in Tongaat,  
KwaZulu Natal

CLIENT:



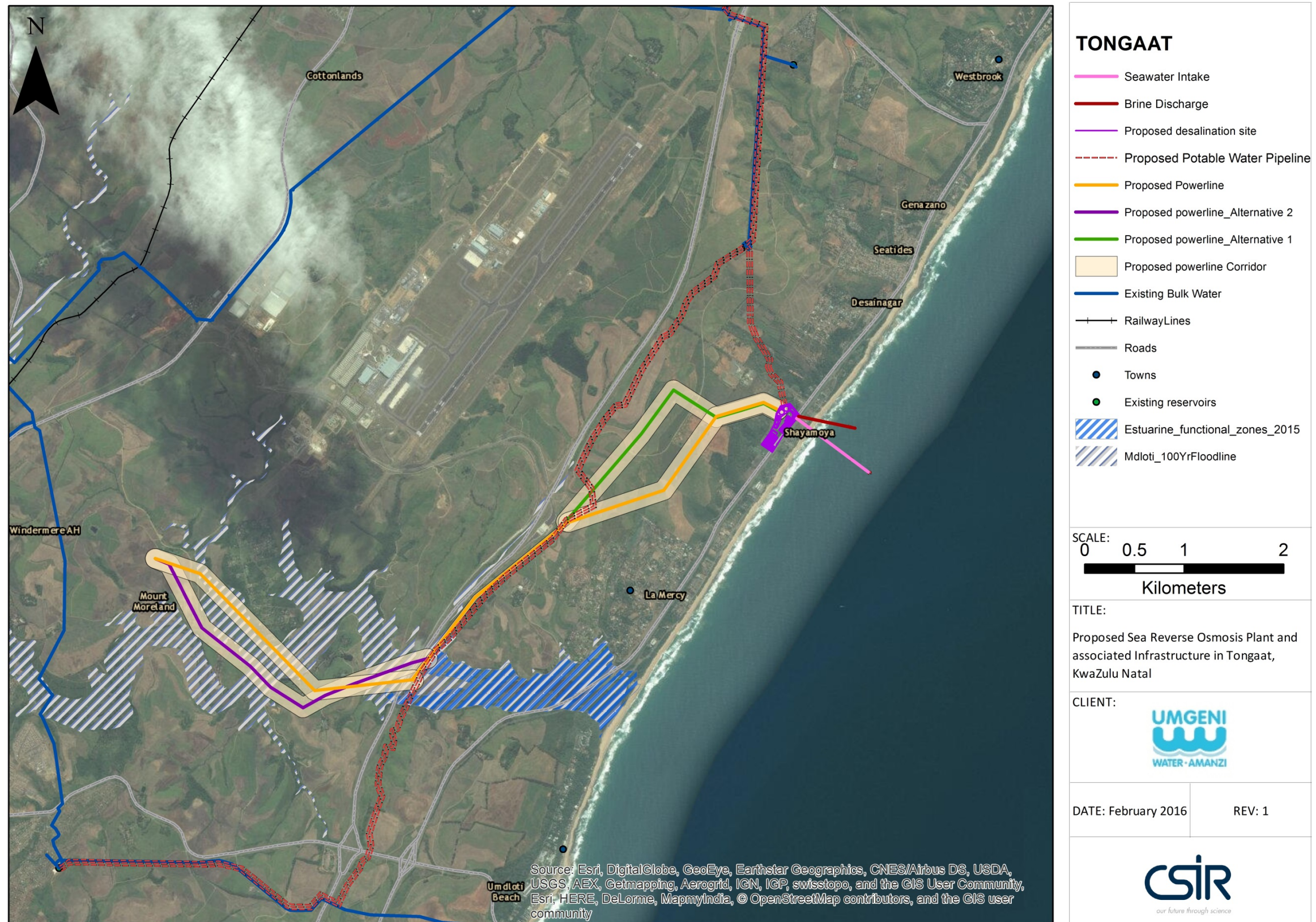
DATE: February 2016

REV: 1



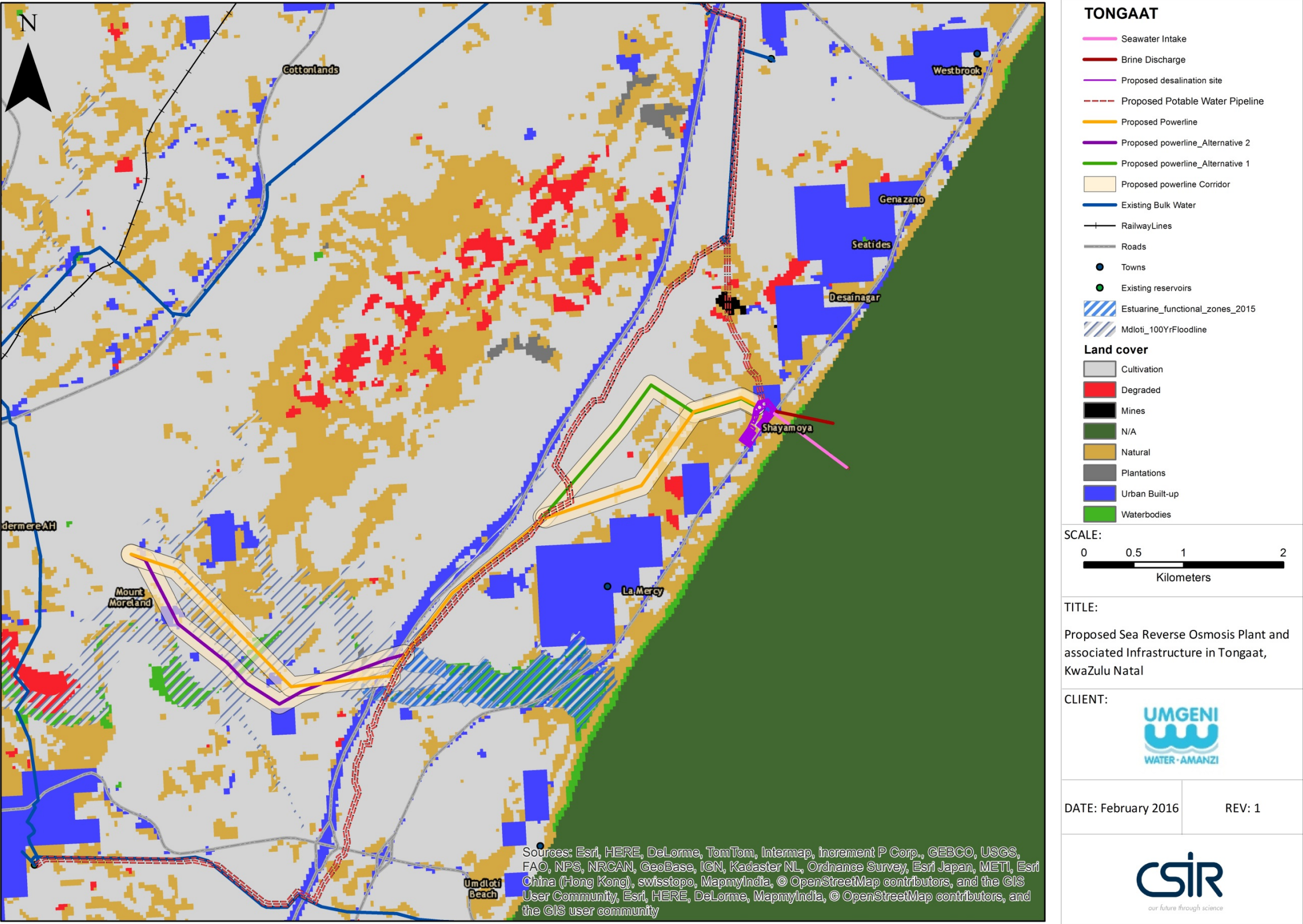
Map 1: Topographic map 1/50 000 showing the location of the proposed project





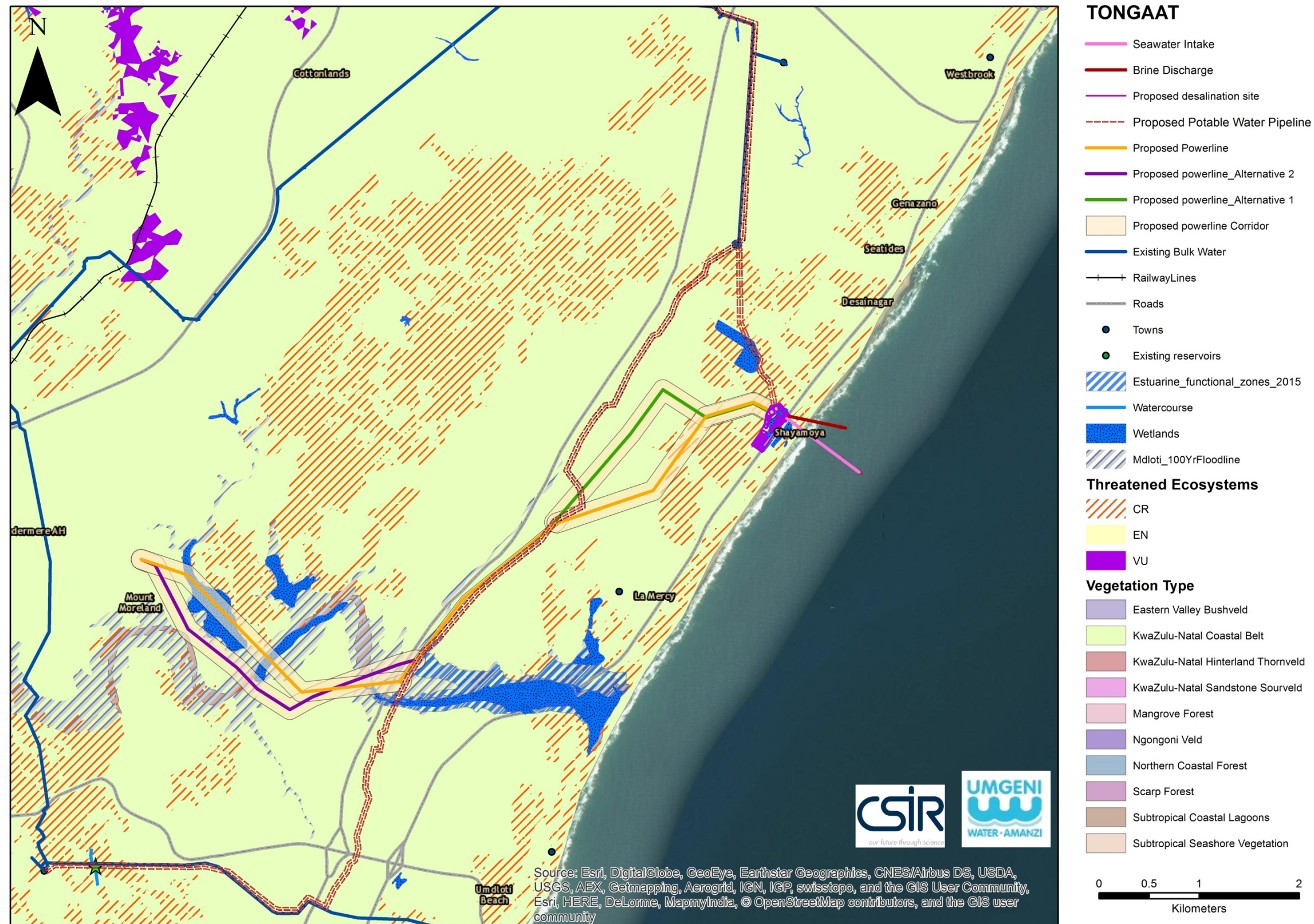
Map 2: Location map for the proposed project





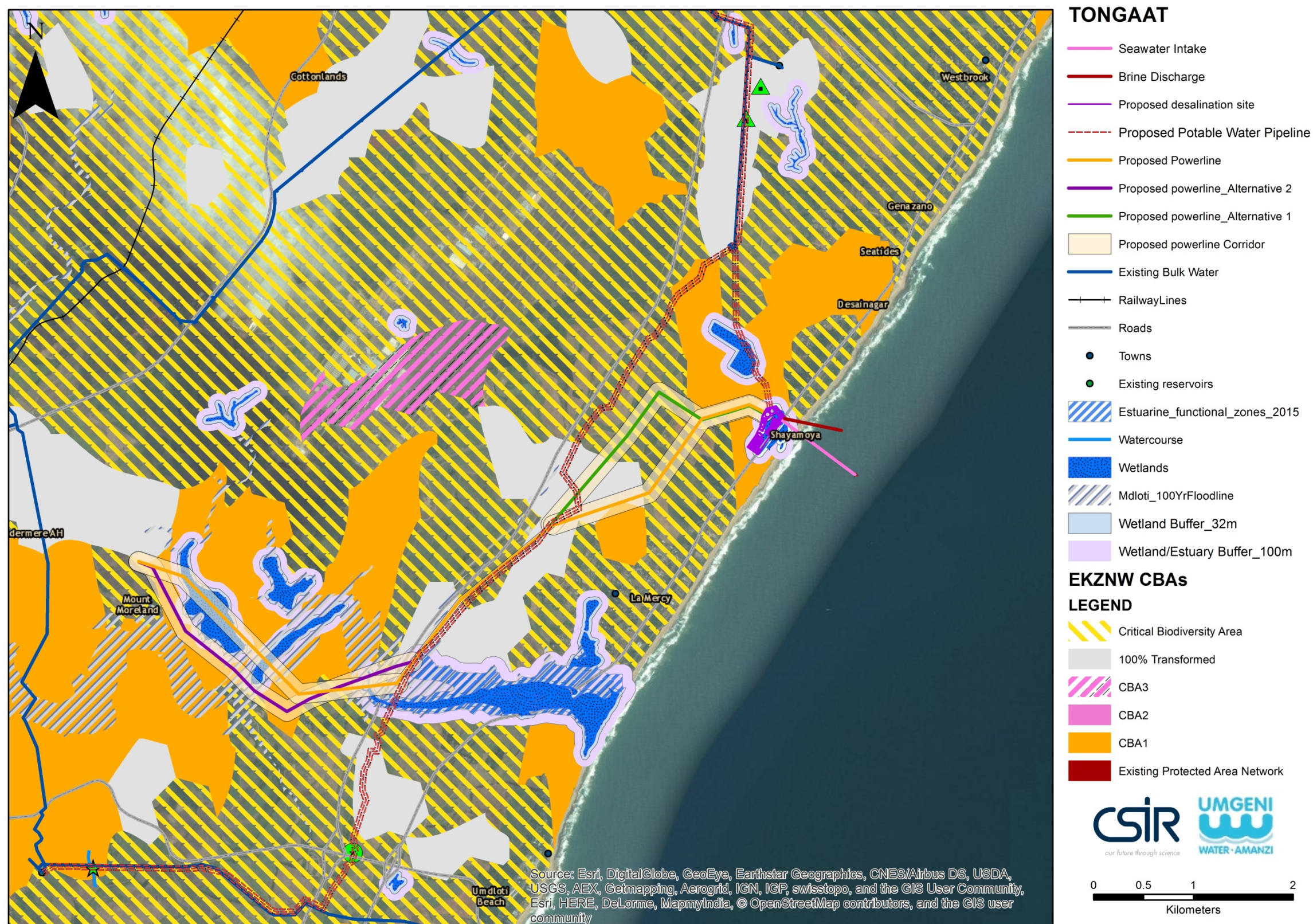
Map 3: Landcover (SANBI)





Map 4: Proposed project in relation to vegetation types and remaining Threatened ecosystems





Map 5: Proposed project in relation to CBA as defined in the EKZNW Terrestrial Systematic Conservation Plan